

French Broad River MPO

# Henderson County Project Prioritization Discussion

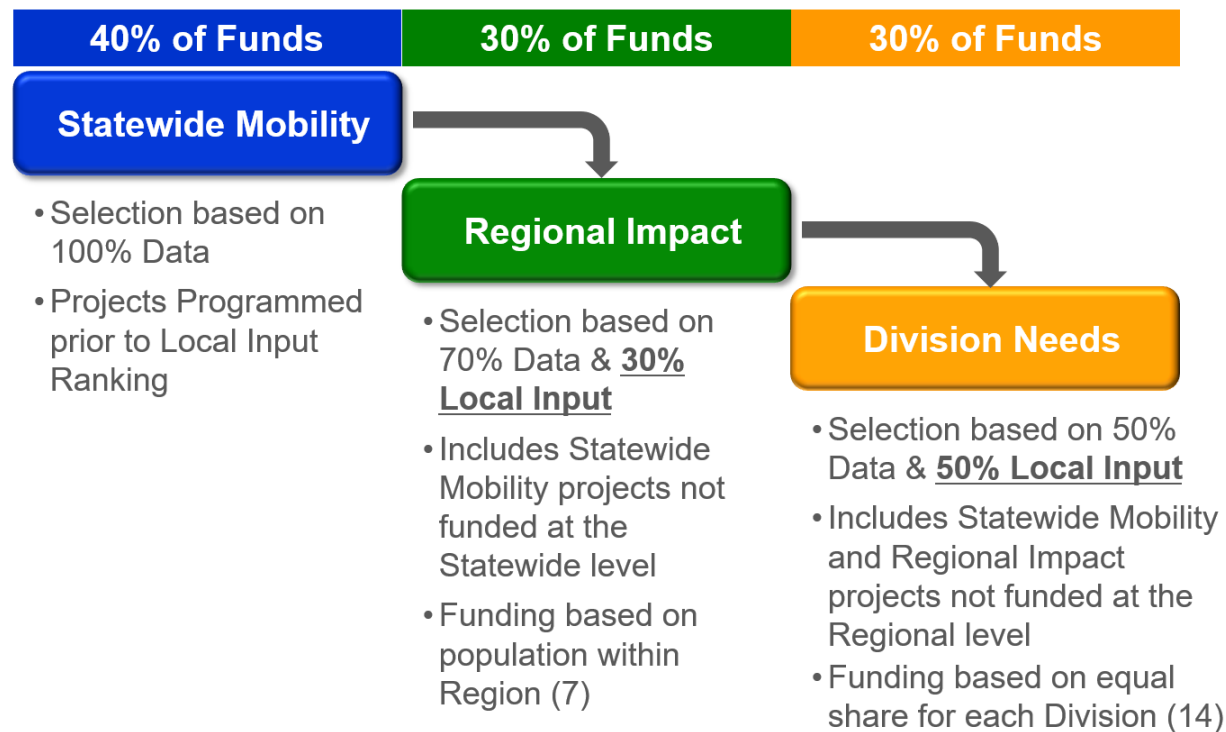
A discussion on projects considered for MPO Local Input Points in the Division Needs tier for P 5.0

French Broad River MPO  
8-8-2018

## INTRODUCTION

The Strategic Transportation Investments (STI) law governs the process in which the State of North Carolina prioritizes transportation projects. The law was passed in 2013 with the intent of creating a data-driven, collaborative process between NCDOT, planning organizations, local governments, and the public to efficiently utilize funding for transportation improvements across the state.

As part of the prioritization process, projects are solicited from planning organizations and NCDOT Divisions. Projects submitted into the prioritization process are placed into three different funding categories based on facility and project types: Statewide Mobility, Regional Impact, and Division Needs. Project scoring for the Statewide Mobility funding category is based solely on quantitative data developed by the Prioritization Workgroup. Metropolitan Planning Organizations (MPOs), Rural Planning Organizations (RPOs), and Division Engineers assign local input points to projects in the Regional Impact and Division Needs funding categories. These points are applied in the calculation of the final project scores for Prioritization 5.0 to determine which projects are funded at the Regional Impact and Division Needs funding categories.



## P 5.0 Updates

NCDOT released the scores for projects in P 5.0 as well as projects programmed in the Statewide Mobility tier. The French Broad River MPO had the following projects programmed:

TIP	Route / Facility Name	From / Cross Street	To / Cross Street	Description	Cost to NCDOT	Statewide Mobility Quantitative Score (Out of 100)	County(s)	Right-of-Way Date - Initial Draft STIP	Construction Date - Initial Draft STIP
I-6018	I-40	I-240 / US 74 Alt		Upgrade interchange	\$ 35,000,000	78.89	Buncombe	FY 2028	After 2029
AV-5882	AVL - Asheville Regional Airport	AVL - Terminal Apron Expansion-South	N/A	Expand the existing terminal apron south of existing apron (3412 and 3500).	\$ 500,000	78.66	Buncombe		FY 2020
AV-5883	AVL - Asheville Regional Airport	AVL - Terminal Apron Expansion - North	N/A	Expand terminal apron to the north of the existing apron (3621).	\$ 500,000	75.72	Buncombe		FY 2020
I-6021	I-40	SR 2838 (Porters Cove Road), Exit 55		Upgrade interchange, improve EB off-ramp connection to SR 2838 (Porters Cove Road)	\$ 22,100,000	75.47	Buncombe	FY 2028	After 2029

### Regional Impact Tier Updates

No official updates have from NCDOT in terms of what projects were funded at the Regional Impact tier but MPO staff does anticipate that the following projects have a high likelihood of being funded in some capacity and therefore would **NOT** need local input points at the Division Needs tier.

Mode	Project Category	Route / Facility Name	From / Cross Street	To / Cross Street	Description	Cost to NCDOT	Regional Impact Total Score (Out of 100)	Notes
Highway	Regional Impact	NC 280 (Boylston Hwy)	NC 191 Northern Intersection (Old Haywood Road)	NC 191 Southern Intersection (Haywood Road)	Upgrade Roadway with Access Management and Intersection realignment and improvements.	\$ 9,600,000	47.36	*Likely* Funded
Highway	Statewide Mobility	I-26	US 25	US 64 (Four Seasons Blvd)	Add Additional Lanes.	\$ 80,000,000	41.27	*Likely* Funded

**Henderson TAC Action: No Action Required; Strictly Informational**

## Prioritizing Projects

For the Henderson County TAC to consider projects to prioritize, there are two steps:

(1) Consider Cascading Projects from the Statewide Mobility tier and Regional Impact tier (see list of projects above)

(2) **Select up to THREE projects as Henderson County priorities.** These may include projects selected to cascade from the Statewide Mobility and Regional Impact tiers in Step #1 or Regional Impact projects listed below:

What does this selection do? Projects selected as “priorities” by the Henderson TAC will receive 25 points in the MPO’s Prioritization Methodology and makes projects more likely to receive MPO Local Input points. MPO Local Input points add 25 points to a project’s Division Needs Score and make them more likely to be funded.

### **AN IMPORTANT NOTE ON BIKE/PED PROJECTS**

Bike/Ped projects require a 20% match from local governments (20% of the total project cost) due to state legislation that prohibits state funds from being put towards stand-alone bike/ped projects. Per the MPO’s prioritization policy, local input points will not be put on a bike/ped project unless the local government makes clear that it is committed to providing the required match.

Henderson County Statewide Mobility and Regional Impact projects eligible to cascade:

Mode	Project Category	Route / Facility Name	From / Cross Street	To / Cross Street	Description	Cost to NCDOT	Division Needs Total Score (Out of 100)	Notes
Highway	Regional Impact	NC 280 (Boylston Hwy)	NC 191 Northern Intersection (Old Haywood Road)	NC 191 Southern Intersection (Haywood Road)	Upgrade Roadway with Access Management and Intersection realignment and improvements.	\$ 9,600,000	39.29	*Likely* Funded
Highway	Regional Impact	NC 225 (Greenville Highway)	US 176 (Spartanburg Highway)	SR 1164 (Erkwood Drive)	Modernize roadway.	\$ 15,000,000	33.07	
Highway	Statewide Mobility	I-26	US 25	US 64 (Four Seasons Blvd)	Add Additional Lanes.	\$ 80,000,000	27.34	*Likely* Funded
Highway	Regional Impact	NC 191	US 25 (Asheville Highway)	SR 1381 (Mountain Road)	Widen to Multi-Lanes.	\$ 35,900,000	21.08	
Highway	Regional Impact	NC 191 (Brevard Road/Old Haywood Road)	NC 280	NC 146	Widen to Multi-Lanes with Bicycle Lanes	\$ 39,800,000	14.08	

NOTE: No preliminary MPO Score will be applied until a project is requested to be cascaded.

Division Needs Projects in Henderson County

Mode	Project Category	Route / Facility Name	From / Cross Street	To / Cross Street	Description	Cost to NCDOT	Division Needs Total Score (Out of 100)
BikePed	Division Needs	Grove Street Sidewalks	Barnwell Street	US 176 (Spartanburg Highway)	Construct a new sidewalk in the City of Hendersonville from Barnwell Street to US 176.	\$ 723,040	38.62
Highway	Division Needs	New Route - Balfour Parkway	NC 191 (Brevard Road)	US 25 Business	Balfour Parkway - Construct New 4-Lane Expressway, Hendersonville	\$ 61,890,000	34.66
Highway	Division Needs	New Route - Balfour Parkway	I-26	US 64	Balfour Parkway - Construct New 4-Lane Expressway, Hendersonville	\$ 50,105,000	34.66
BikePed	Division Needs	Flat Rock Greenway	Highland Lake Road	Carl Sandburg Home	Construct a new multi-use path in the Village of Flat Rock from Highland Lake Road to the Carl Sandburg Home.	\$ 988,264	29.28
BikePed	Division Needs	Greenway-Jackson Park to Blue Ridge CC	Jackson Park	Blue Ridge Community College	Construct greenway along existing sewer easement from terminus of existing Oklawaha Greenway in Jackson Park to Blue Ridge Community College.	\$ 862,431	26.00

Mode	Project Category	Route / Facility Name	From / Cross Street	To / Cross Street	Description	Cost to NCDOT	Score
Highway	Division Needs	SR 1525 (Duncan Hill Road ), SR 1508 (Signal Hill Road), SR 1503 (N Main Street)	US 64 (Four Seasons Boulevard)	US 25 Bus (Asheville Highway)	Modernize roadway. Add turn lanes, widen shoulders, and improve geometrics and intersection operations as appropriate.	\$ 30,300,000	24.13
Highway	Division Needs	SR 1365 (N. Rugby Rd), SR 1309 (S. Rugby Rd.)	US 64 West	Butler Ridge Road	Modernize Roadway.	\$ 6,500,000	22.58
BikePed	Division Needs	French Broad River Multimodal Bridge	Westfeldt Park	Future Park	Construct a bicycle and pedestrian bridge over the French Broad River near NC 280	\$ 813,809	22.55
BikePed	Division Needs	Oklawaha Greenway North	Brookside Camp Rd	Berkeley Ball Park	Construct a new multi-use path from Berkley Park to Brookside Camp Road.	\$ 1,657,660	21.95
BikePed	Division Needs	Oklawaha Greenway North (Phase IV)	Westfeldt Park	Butler Bridge Road	Construct a new multi-use path from Westfeldt Park to Butler Bridge Road in Henderson County	\$ 872,000	21.01



Mode	Project Category	Route / Facility Name	From / Cross Street	To / Cross Street	Description	Cost to NCDOT	Score
Highway	Division Needs	SR 2162 (Blythe Street)	NC 191 (Haywood Road)	US 64 (6th Avenue W)	Modernize roadway. Add turn lanes, widen shoulders, and improve geometrics and intersection operations as appropriate. Include complete streets improvements.	\$ 10,200,000	18.41
BikePed	Division Needs	NC 280 Multi-Use Path	North Mills River Road	French Broad River	Construct a new multi-use path from the French Broad River to North Mills River Road	\$ 1,263,362	18.13
BikePed	Division Needs	NC 280 Multi-Use Path	North Mills River Road	Haywood Road (NC 191)	Construct Multi-Use Path on NC 280 from North Mills River Road to Haywood Road (NC 191)	\$ 618,028	17.89
Highway	Division Needs	SR 1331 (Banner Farm Road)	SR 1426 (School House Road)		Improve the intersection of SR 1331 (Banner Farm Road) and SR 1426 (School House Road)	\$ 1,500,000	16.28
Highway	Division Needs	SR 1345 (Butler Bridge Rd)	NC 280 (Boylston Highway)	US 25 (Hendersonville Road)	Widen roadway.	\$ 42,900,000	13.02
Highway	Division Needs	SR 1173 (White Pine Drive)	US 64 (Brevard Road)	Hebron Road	Upgrade Roadway	\$ 15,800,000	10.77

Mode	Project Category	Route / Facility Name	From / Cross Street	To / Cross Street	Description	Cost to NCDOT	Score
Highway	Division Needs	SR 1358 (Fanning Bridge Road)	US 25	NC 280	Modernize roadway. Add turn lanes, widen lanes and shoulders, and improve geometrics and intersection operations as appropriate. Incorporate complete streets improvements.	\$ 28,000,000	9.18

## HENDERSON COUNTY PUBLIC SURVEY RESPONSES

The Henderson County survey was taken by 613 people- the second most of the five counties.

The Henderson County survey had both the shortened survey and the deep-dive options due to the number of projects being considered in the county.

As background, Henderson County had been experiencing considerable public opposition to several funded transportation projects in the County, including the Balfour Parkway, Kanuga Road, and North Highland Lake Road. More opposition was seen in response to several proposed projects in Henderson County, including Balfour Parkway Sections A & C and two proposed widenings of NC 191. The two sections of Balfour Parkway and the section of NC 191 between US 25-Business and Mountain Road were the most negatively rated projects in the entire region.

Across modes, bike/ped projects were received much more positively than highway projects, with exceptions for a proposed widening on I-26 (from US 64 to US 25) and the Flat Rock Greenway. The proposed widening of I-26 was received the most positively of any highway project in Henderson County with 81.3% of users rating the project positively and only 15.6% of users rating project negatively. The Flat Rock Greenway was the most negatively received bike/ped project but still had 66.2% of users rating the project positively and 24.8% of users rating the project negatively.

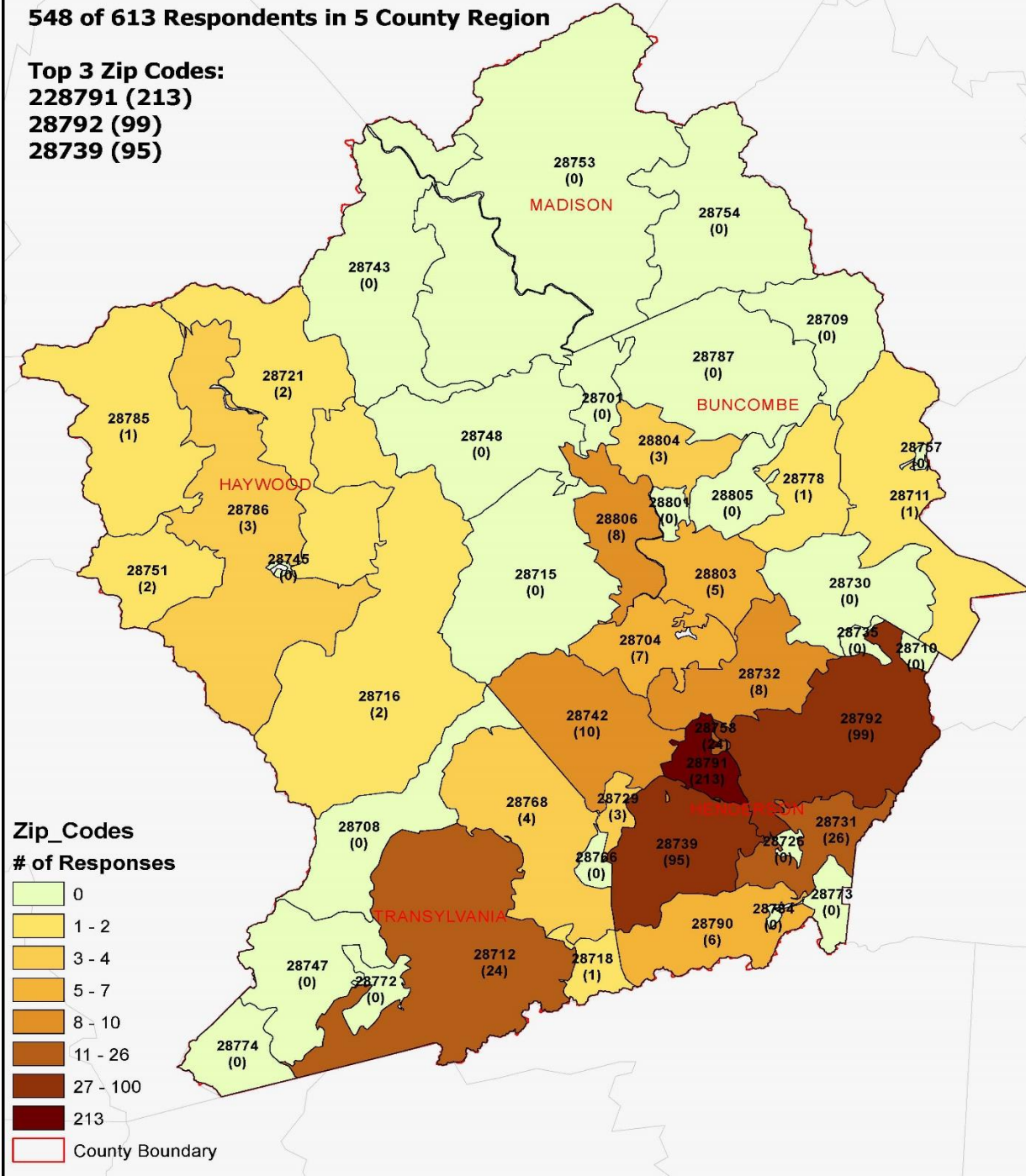
The map on the following page shows the respondents for the Henderson County survey by zip code. 548 of the 613 respondents live or travel within the 5 county region. The charts following show the survey results of each individual project, first with results from the “short” survey and then the “deep dive” results.

County	Respondents
Transylvania	910
<b>Henderson</b>	<b>613</b>
Buncombe	595
Madison	209
Haywood	160

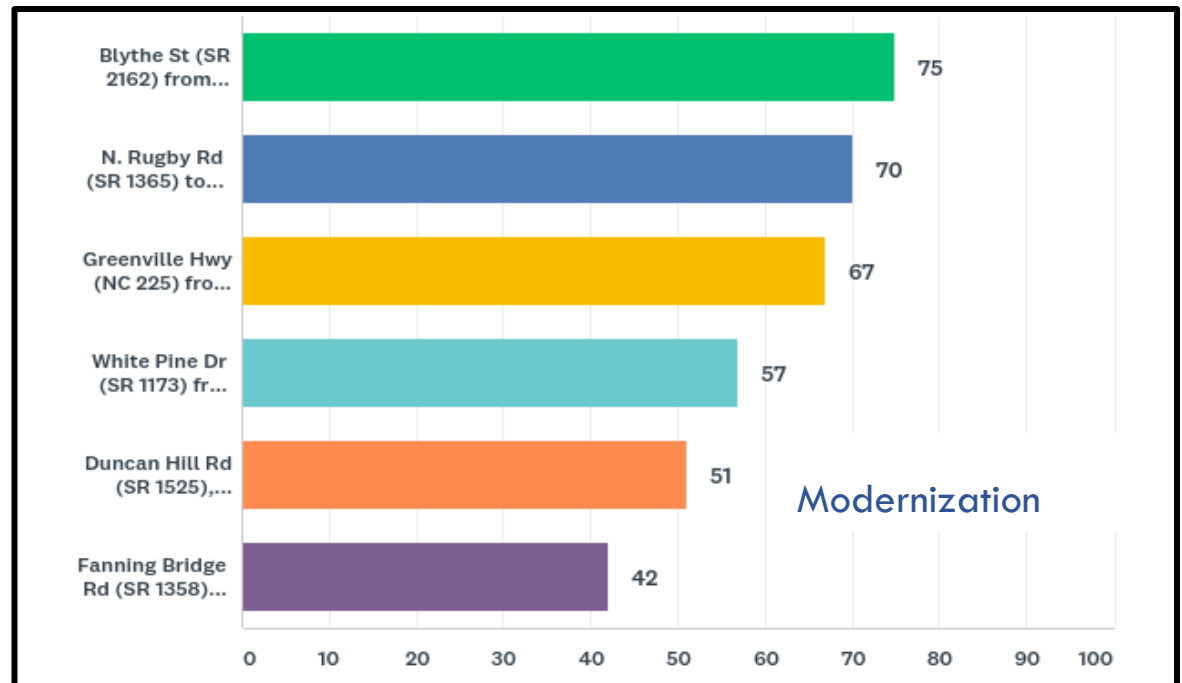
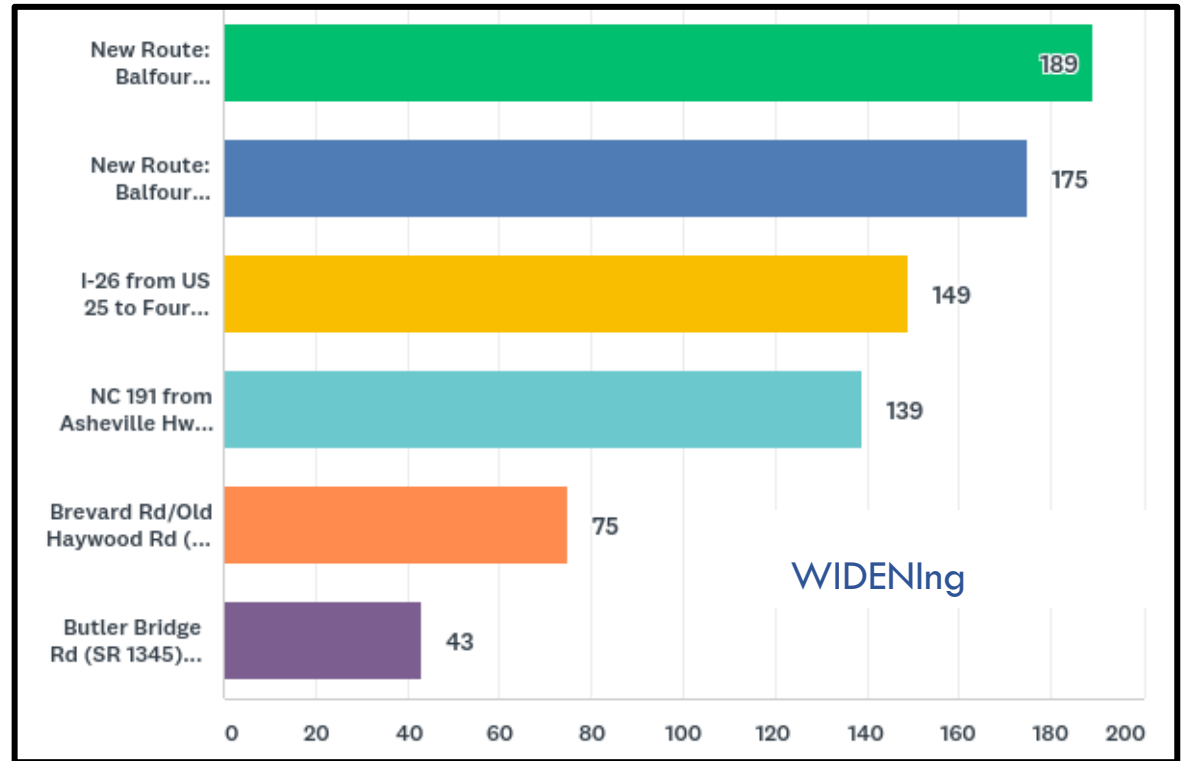
# Henderson Survey Responses By Zip Code

548 of 613 Respondents in 5 County Region

**Top 3 Zip Codes:**  
**228791 (213)**  
**28792 (99)**  
**28739 (95)**



“Short” survey results for henderson county presented here are categorized into Modernization and Widening. Number next to bar line denotes number of respondents.



“Deep Dive” results – Henderson

Project	County	Mode	Tier	Average Score	# Positive	% Positive	# Neutral	% Neutral	# Negative	% Negative	# of Responses
Oklawaha Greenway (Berkley Park to Brookside Camp Road)	Henderson	Bike/Ped	Division Needs	3.03	230	80.4%	31	10.8%	25	8.7%	286
French Broad River Bridge	Henderson	Bike/Ped	Division Needs	2.76	218	77.3%	34	12.1%	30	10.6%	282
Oklawaha Greenway (Westfeldt Park to Butler Bridge Road)	Henderson	Bike/Ped	Division Needs	2.75	211	75.9%	38	13.7%	29	10.4%	278
Oklawaha Greenway (Jackson Park to BRCC)	Henderson	Bike/Ped	Division Needs	2.75	208	72.7%	37	12.9%	41	14.3%	286
I-26	Henderson	Highway	Statewide Mobility	2.67	183	81.3%	7	3.1%	35	15.6%	225
Grove Street Sidewalks	Henderson	Bike/Ped	Division Needs	2.66	220	78.3%	33	11.7%	28	10.0%	281
NC 280 MUP (French Broad River to N Mills River Rd)	Henderson	Bike/Ped	Division Needs	2.35	208	73.5%	29	10.2%	46	16.3%	283
NC 280 MUP (N Mills River Rd to NC 191)	Henderson	Bike/Ped	Division Needs	2.34	215	72.9%	28	9.5%	52	17.6%	295
Flat Rock Greenway	Henderson	Bike/Ped	Division Needs	1.55	192	66.2%	26	9.0%	72	24.8%	290

Project	County	Mode	Tier	Average Score	# Positive	% Positive	# Neutral	% Neutral	# Negative	% Negative	# of Responses
Banner Farm Rd @ School House Rd	Henderson	Highway	Division Needs	1.41	124	64.2%	37	19.2%	32	16.6%	193
Fanning Bridge Modernization	Henderson, Buncombe	Highway	Division Needs	1.13	112	62.9%	27	15.2%	39	21.9%	178
Duncan Hill Road	Henderson	Highway	Division Needs	1.07	116	63.0%	18	9.8%	50	27.2%	184
Butler Bridge Road	Henderson	Highway	Division Needs	1.02	109	58.6%	36	19.4%	41	22.0%	186
NC 280	Henderson	Highway	Regional Impact	0.78	103	54.8%	33	17.6%	52	27.7%	188
NC 225	Henderson	Highway	Regional Impact	0.60	101	53.7%	34	18.1%	53	28.2%	188
Blythe Street	Henderson	Highway	Division Needs	0.57	104	55.9%	24	12.9%	58	31.2%	186
White Pine Drive	Henderson	Highway	Division Needs	0.52	89	48.6%	45	24.6%	49	26.8%	183
N Rugby Road	Henderson	Highway	Division Needs	0.51	116	57.1%	24	11.8%	63	31.0%	203
NC 191 (NC 280 to NC 146)	Henderson	Highway	Regional Impact	0.01	100	49.5%	19	9.4%	83	41.1%	202
NC 191 (Mountain Road to US 25B)	Henderson	Highway	Regional Impact	-1.45	78	33.9%	15	6.5%	137	59.6%	230
Balfour Pkwy (I-26 to US 64)	Henderson	Highway	Division Needs	-2.77	46	19.7%	12	5.1%	176	75.2%	234
Balfour Pkwy (NC 191 to US 25B)	Henderson	Highway	Division Needs	-2.87	45	18.8%	11	4.6%	184	76.7%	240