



**Secure your load,  
it's the law!**

**Whether you are a private hauler or resident all items, including trash and recycling, must be secured during transportation to the Transfer Station and Convenience Center.**



**We all share a responsibility to keep Henderson County's roadways safe and clean.**



**For more information visit:**

- [www.hendersoncountync.gov/solid-waste](http://www.hendersoncountync.gov/solid-waste)
- [www.secureyourload.com](http://www.secureyourload.com)
- [www.ncdot.gov](http://www.ncdot.gov)

**Henderson  
County  
Solid Waste**



## How to know if your load is secure?

A load is secure when nothing in your vehicle can slide, shift, fall, or sift onto roadways or become airborne. Loads can be secured by tying down using ropes, bungee cords, or straps. Tarps and netting can also be utilized to help secure.

- Tie down using rope, netting, straps, or chains. Securely fasten large items directly to your vehicle. Make sure that any covering is securely tied down. This includes adequate coverage for bagged garbage

- Put lighter items lower and place heavier items on top to help keep them in place and secure the heavy items directly to your vehicle.

- Cover your load with a tarp. Covering your load with a tarp and then securely fastening the tarp to the vehicle is good way to ensure that your load is secure.

- Don't overload your vehicle.

- Double-check that your load is secure.



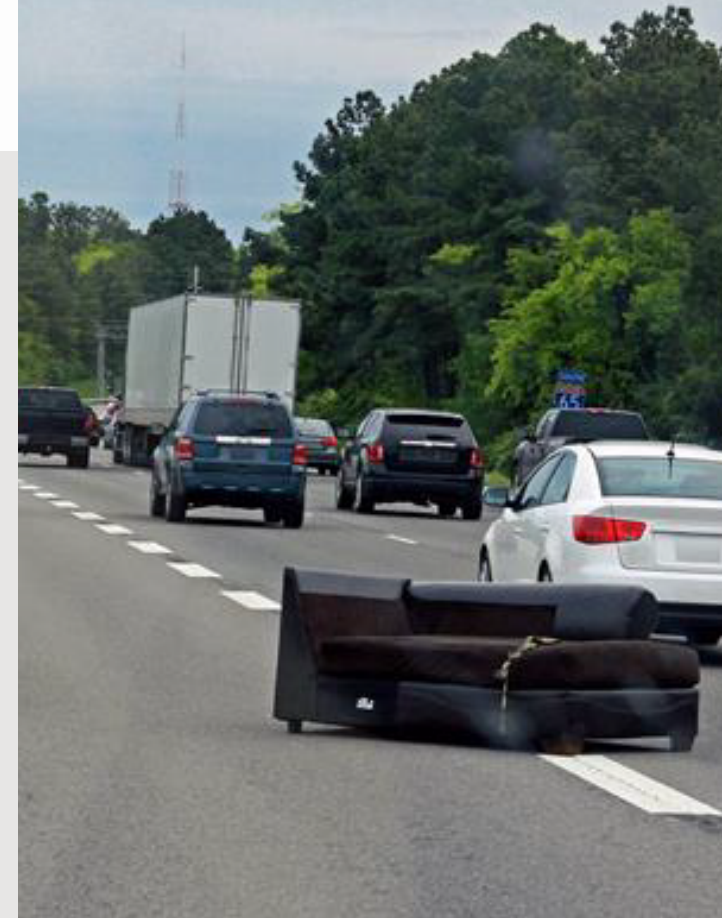
## Don't risk it! Secure your load.

Henderson County Solid Waste Division retains the right to turn away users without covered or strapped loads.

**Henderson County Ordinance 95-17c: Cover Requirements.** Vehicles shall be covered by covered effective means during transportation to prevent blowing of materials from out of the vehicle. "Effective means" shall include, but not be limited to; durable, heavy plastic or canvas tied down or secured to cover the entire load. Loads consisting of bulky waste, white goods, lumber, pallets and crates do not have to be covered but shall be secured with rope or tie-downs to assure spillage does not occur. Upon entrance to the facility gate, any removal of tarps or similar covers on solid waste shall be prohibited until the destination is reached in a designated facility disposal area.

The requirement to secure loads is North Carolina Code - General Statutes § 20-116. Size of vehicles and loads. (g) (1) No vehicle shall be driven or moved on any highway unless the vehicle is constructed and loaded to prevent any of its load from falling, blowing, dropping, sifting, leaking, or otherwise escaping therefrom, and the vehicle shall not contain any holes, cracks, or openings through which any of its load may escape.

## Unsecured loads are hazardous and cause unsightly litter



## Contact Us



191 Transfer Station Drive  
Hendersonville, NC 28791



<https://www.hendersoncountync.gov/solid-waste>



828-697-4505



Mon-Sat 7am-4pm