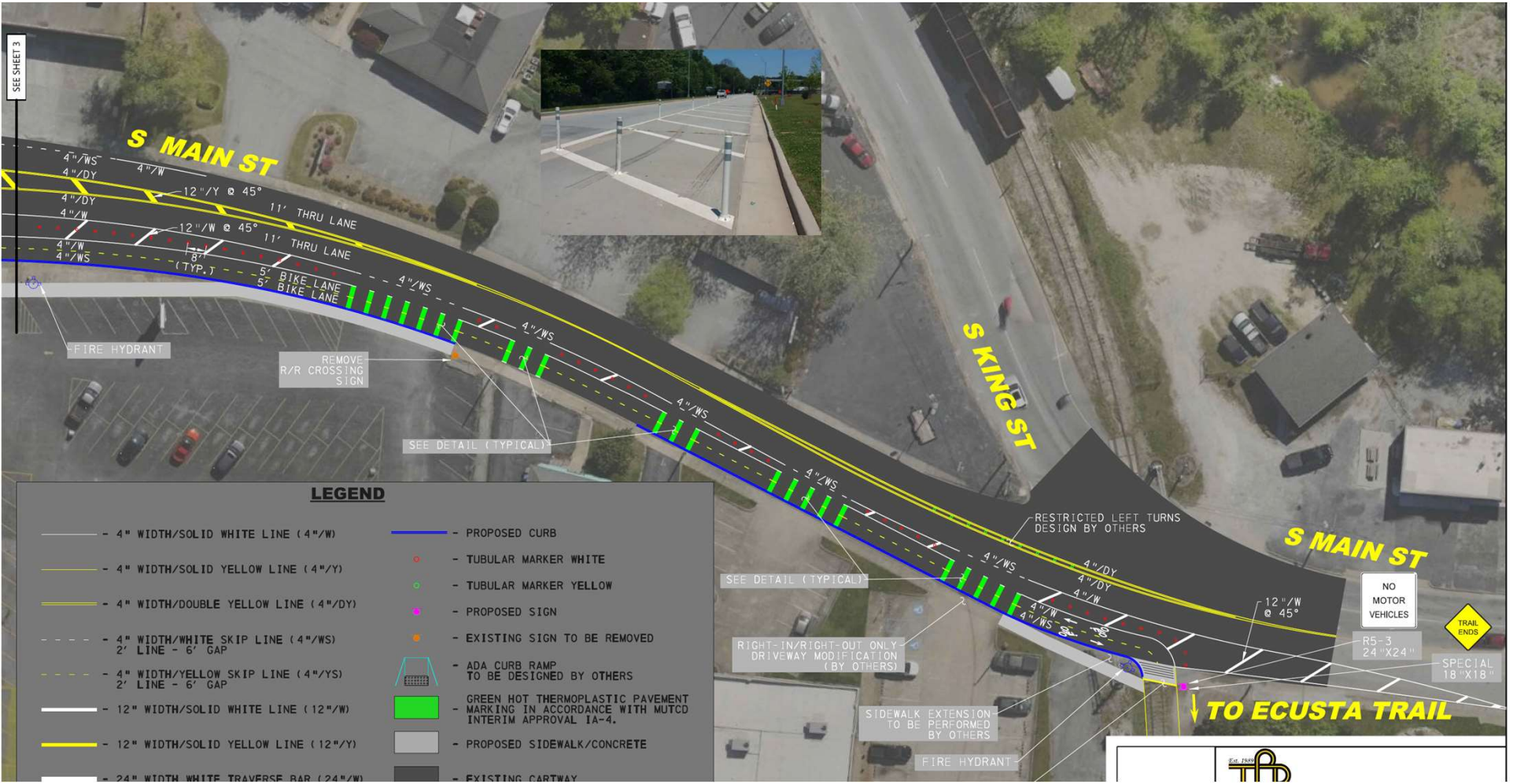


City of Hendersonville and TPD  
S Main Street Bicycle Facility and Pedestrian Improvements

Connecting Downtown to the Ecusta Trail

April 10, 2024



SEE SHEET 3



**S MAIN ST**

**S KING ST**

**S MAIN ST**

**TO ECUSTA TRAIL**

RESTRICTED LEFT TURNS  
DESIGN BY OTHERS

SEE DETAIL (TYPICAL)

RIGHT-IN/RIGHT-OUT ONLY  
DRIVEWAY MODIFICATION  
(BY OTHERS)

SIDEWALK EXTENSION  
TO BE PERFORMED  
BY OTHERS

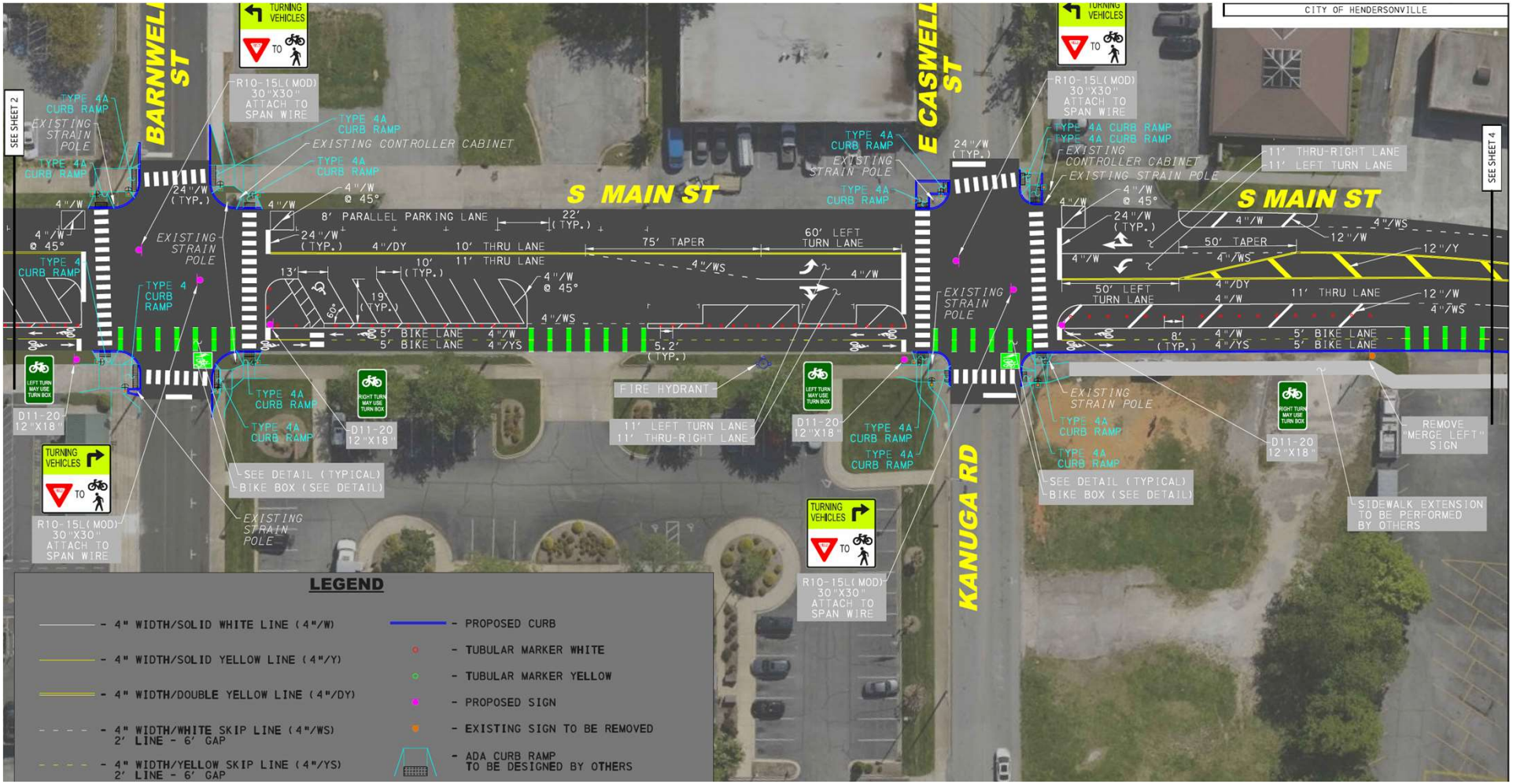
NO MOTOR  
VEHICLES

TRAIL  
ENDS

R5-3  
24" X 24"

SPECIAL  
18" X 18"





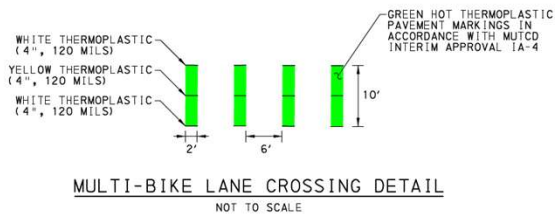
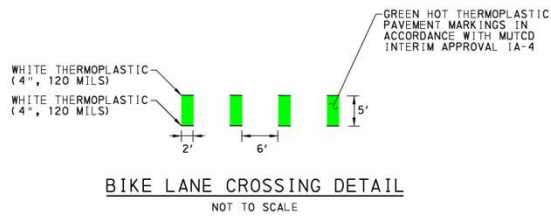
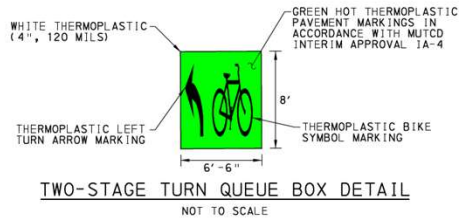
SEE SHEET 2

SEE SHEET 4

**LEGEND**

- 4" WIDTH/SOLID WHITE LINE (4"/W)
- 4" WIDTH/SOLID YELLOW LINE (4"/Y)
- 4" WIDTH/DOUBLE YELLOW LINE (4"/DY)
- - - 4" WIDTH/WHITE SKIP LINE (4"/WS)  
2' LINE - 6' GAP
- - - 4" WIDTH/YELLOW SKIP LINE (4"/YS)  
2' LINE - 6' GAP
- PROPOSED CURB
- - TUBULAR MARKER WHITE
- - TUBULAR MARKER YELLOW
- - PROPOSED SIGN
- - EXISTING SIGN TO BE REMOVED
- ADA CURB RAMP  
TO BE DESIGNED BY OTHERS





**PEXCO, DAVIDSON TRAFFIC CONTROL PRODUCTS**  
3110 70TH AVENUE EAST  
TACOMA, WA 98424, USA  
TOLL FREE: 1-877-335-4638  
PHONE: (253) 284-8000  
FAX: (253) 284-8000  
www.pexco.com/traffic

**TUBULAR MARKER WHITE DETAIL**  
NOT TO SCALE

**BASE OPTIONS:**

- SELECT DESIRED POST:
  - UR GRADE
- SPECIFY DESIRED HEIGHT:
  - 18"  30"
  - 24"  42"
  - 28"  48"
  - CUSTOM (SEE NOTE 4)
- SELECT DESIRED POST COLOR:
  - WHITE  YELLOW
  - ORANGE  CUSTOM (SEE NOTE 3)
- SELECT DESIRED REFLECTIVE SHEETING:
  - REFLEXITE AR 1000
  - 3M HIGH INTENSITY GRADE
  - 3M FHP
- SELECT DESIRED SHEETING COLOR:
  - WHITE
  - YELLOW
  - BLUE
  - CUSTOM (SEE NOTE 3)
- SELECT DESIRED BASE:
  - 1 LB. LITE BASE - BLACK ONLY
  - 1.5 LB. HEAVY DUTY BASE - COLORS ONLY
  - 10 LB. GREEN CROSS BASE
  - INVISIBASE (FLUSH MOUNT)
  - METRO BASE

**MANUFACTURER NOTES:**

- POSTS AND REFLECTIVE SHEETING ARE AVAILABLE IN CUSTOM COLORS. CONTACT MANUFACTURER.
- FLUX-GUIDE POSTS CAN BE CUT TO ANY LENGTH YOU DESIRE. CALL FOR DETAILS.
- POSTS MAY BE ORDERED IN FACTORY APPLIED, HIGH INTENSITY OR PRISMATIC SUPER HIGH INTENSITY RETRO-REFLECTIVE SHEETING. SPECIFY TYPE, COLOR AND SIZE WHEN ORDERING.

**NOTES:**

- INSTALLATION TO BE COMPLETED IN ACCORDANCE WITH MANUFACTURER'S SPECIFICATIONS.
- DO NOT SCALE DRAWING.
- THIS DRAWING IS INTENDED FOR USE BY ARCHITECTS, ENGINEERS, CONTRACTORS, CONSULTANTS AND DESIGN PROFESSIONALS FOR PLANNING PURPOSES ONLY. THIS DRAWING MAY NOT BE USED FOR CONSTRUCTION.
- ALL INFORMATION CONTAINED HEREIN WAS CURRENT AT THE TIME OF DEVELOPMENT BUT MUST BE REVIEWED AND APPROVED BY THE PRODUCT MANUFACTURER TO BE CONSIDERED ACCURATE.
- CONTRACTOR'S NOTE: FOR PRODUCT AND COMPANY INFORMATION VISIT [www.CADetails.com/info](http://www.CADetails.com/info) AND ENTER REFERENCE NUMBER **FG 300 MODEL UR**

**FG 300 MODEL UR**  
HIGH-PERFORMANCE SURFACE MOUNT POST

REVISION DATE: 06/03/2022  
CADetails.com

PROTECTED BY COPYRIGHT ©2022 CADDETAILS.COM LTD.

**PEXCO, DAVIDSON TRAFFIC CONTROL PRODUCTS**  
3110 70TH AVENUE EAST  
TACOMA, WA 98424, USA  
TOLL FREE: 1-877-335-4638  
PHONE: (253) 284-8000  
FAX: (253) 284-8000  
www.pexco.com/traffic

**TUBULAR MARKER YELLOW DETAIL**  
NOT TO SCALE

**BASE OPTIONS:**

- SELECT DESIRED POST:
  - UR GRADE
- SPECIFY DESIRED HEIGHT:
  - 18"  30"
  - 24"  42"
  - 28"  48"
  - CUSTOM (SEE NOTE 4)
- SELECT DESIRED POST COLOR:
  - WHITE  YELLOW
  - ORANGE  CUSTOM (SEE NOTE 3)
- SELECT DESIRED REFLECTIVE SHEETING:
  - REFLEXITE AR 1000
  - 3M HIGH INTENSITY GRADE
  - 3M FHP
- SELECT DESIRED SHEETING COLOR:
  - WHITE
  - YELLOW
  - BLUE
  - CUSTOM (SEE NOTE 3)
- SELECT DESIRED BASE:
  - 1 LB. LITE BASE - BLACK ONLY
  - 1.5 LB. HEAVY DUTY BASE - COLORS ONLY
  - 10 LB. GREEN CROSS BASE
  - INVISIBASE (FLUSH MOUNT)
  - METRO BASE

**MANUFACTURER NOTES:**

- POSTS AND REFLECTIVE SHEETING ARE AVAILABLE IN CUSTOM COLORS. CONTACT MANUFACTURER.
- FLUX-GUIDE POSTS CAN BE CUT TO ANY LENGTH YOU DESIRE. CALL FOR DETAILS.
- POSTS MAY BE ORDERED IN FACTORY APPLIED, HIGH INTENSITY OR PRISMATIC SUPER HIGH INTENSITY RETRO-REFLECTIVE SHEETING. SPECIFY TYPE, COLOR AND SIZE WHEN ORDERING.

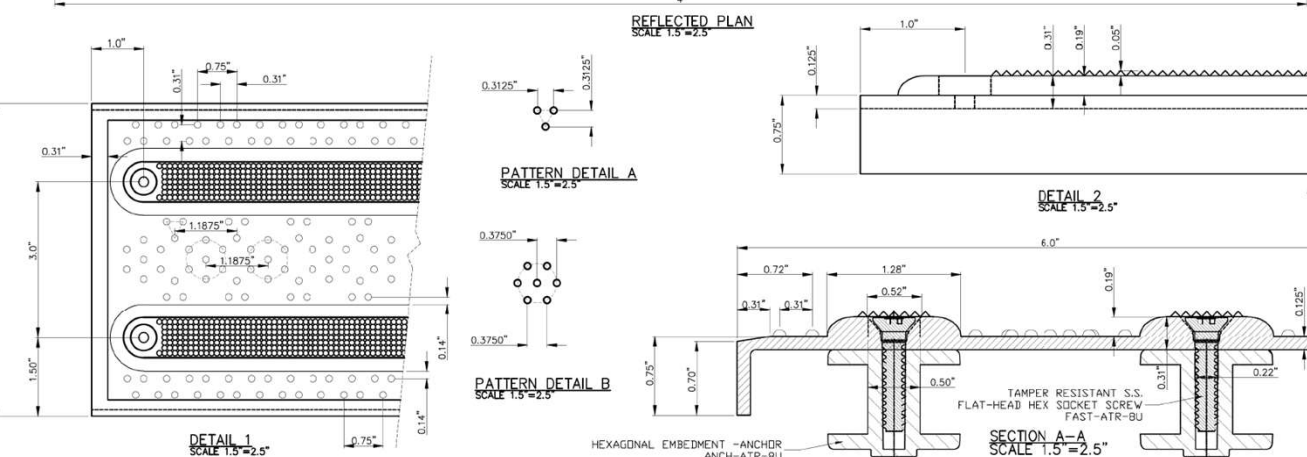
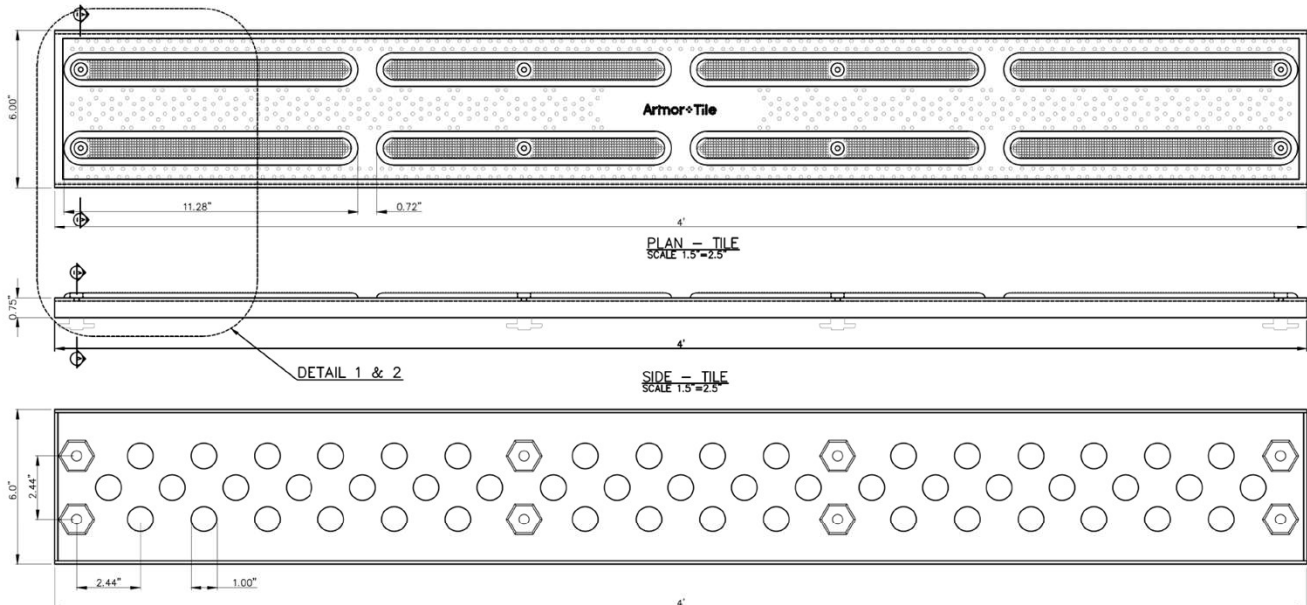
**NOTES:**

- INSTALLATION TO BE COMPLETED IN ACCORDANCE WITH MANUFACTURER'S SPECIFICATIONS.
- DO NOT SCALE DRAWING.
- THIS DRAWING IS INTENDED FOR USE BY ARCHITECTS, ENGINEERS, CONTRACTORS, CONSULTANTS AND DESIGN PROFESSIONALS FOR PLANNING PURPOSES ONLY. THIS DRAWING MAY NOT BE USED FOR CONSTRUCTION.
- ALL INFORMATION CONTAINED HEREIN WAS CURRENT AT THE TIME OF DEVELOPMENT BUT MUST BE REVIEWED AND APPROVED BY THE PRODUCT MANUFACTURER TO BE CONSIDERED ACCURATE.
- CONTRACTOR'S NOTE: FOR PRODUCT AND COMPANY INFORMATION VISIT [www.CADetails.com/info](http://www.CADetails.com/info) AND ENTER REFERENCE NUMBER **FG 300 MODEL UR**

**FG 300 MODEL UR**  
HIGH-PERFORMANCE SURFACE MOUNT POST

REVISION DATE: 06/03/2022  
CADetails.com

PROTECTED BY COPYRIGHT ©2022 CADDETAILS.COM LTD.



www.Armor-Tile.com



© 2006 ENGINEERED PLASTICS  
 CONFIDENTIAL AND PROPRIETARY DOCUMENT  
 ANY ONE OR MORE OF THE FOLLOWING  
 PATENTS MAY APPLY  
 U. S. PATENT NO. 5,303,669, 5,775,835,  
 6,449,790, AND 6,895,122 BS  
 C.D.N. PATENT NO. 2,037,532, 2,070,984  
 US PATENTS PENDING.  
 © KENNETH E. SZEKELY

MATERIAL LIST			
#	DESCRIPTION	PART No:	QTY
1	ARMOR-TILE	ADD-C-504-2-YW	1
2	HEXAGONAL EMBEDMENT ANCHOR	A-ANCHORS	8
3	TAMPER RESISTANT S.S. FLAT HEAD HEX SOCKET SCREW	S-SCREWS	8

NOTE:  
 ANCHOR ARE INCLUDED AND ASSEMBLED ON TILE.

No.	DATE	REVISION	APPR.

SCALE		
DESIGNED	BY	DATE
DRAWN	K.S.	08/90
CHECKED	M.T.	30/11/2018
PROJECT MANAGER	D.G.	

TRACE DETECTABLE WARNING SURFACE PART No: ADD-C504-2-YW  
 MATERIAL Herculite Polymer Composite

**Armor-Tile ADA**  
 SOUND AMPLIFYING DETECTABLE/TACTILE  
 WARNING SURFACE TILE

PROJECT  
**Armor-Tile™**  
 DETECTABLE/TACTILE  
 DIRECTIONAL TILE  
 6" x 48" CAST IN PLACE REPLACEABLE  
 BAR TILE  
 PLANS AND DETAILS

DRAWING No:	REV. No:
ADD-C504-2-YW	0

The background features a dark blue-grey area on the left with a large white question mark and several smaller, semi-transparent question marks in shades of gold and grey. To the right, there are green geometric shapes in various shades of lime and forest green, creating a modern, abstract design.

## Questions?

Brent Detwiler, PE  
Public Services Director  
City of Hendersonville  
[bdetwiler@hvlnc.gov](mailto:bdetwiler@hvlnc.gov)  
(828) 697-3060