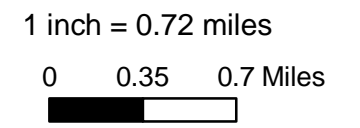
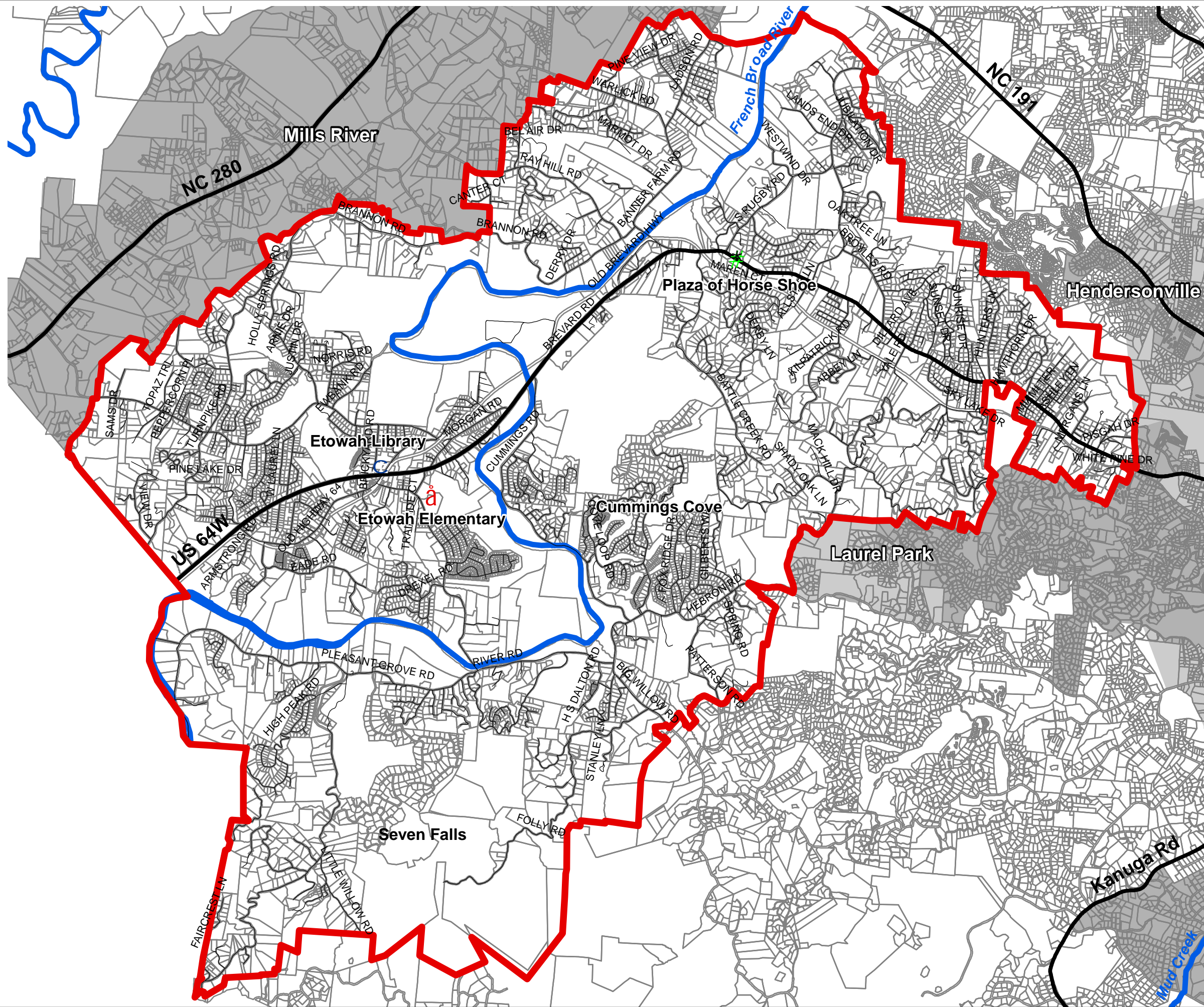


# Etowah and Horse Shoe Communities Planning Area

## Boundary Map






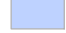










-  Major Roads
-  Streets
-  Major Streams
-  Etowah and Horse Shoe Planning Area
-  Parcels
-  Municipal ETJ
-  Municipal Limits



This map is prepared from the inventory of real property found within this jurisdiction, and is compiled from recorded deeds, plats, and other public records and data. Users of this map, are hereby notified that the aforementioned public primary information sources should be consulted for verification of the information contained on this map. The County and mapping company assume no legal responsibility for the information contained on this map.

# Etowah and Horse Shoe Communities Planning Area

## Census Block Group Map

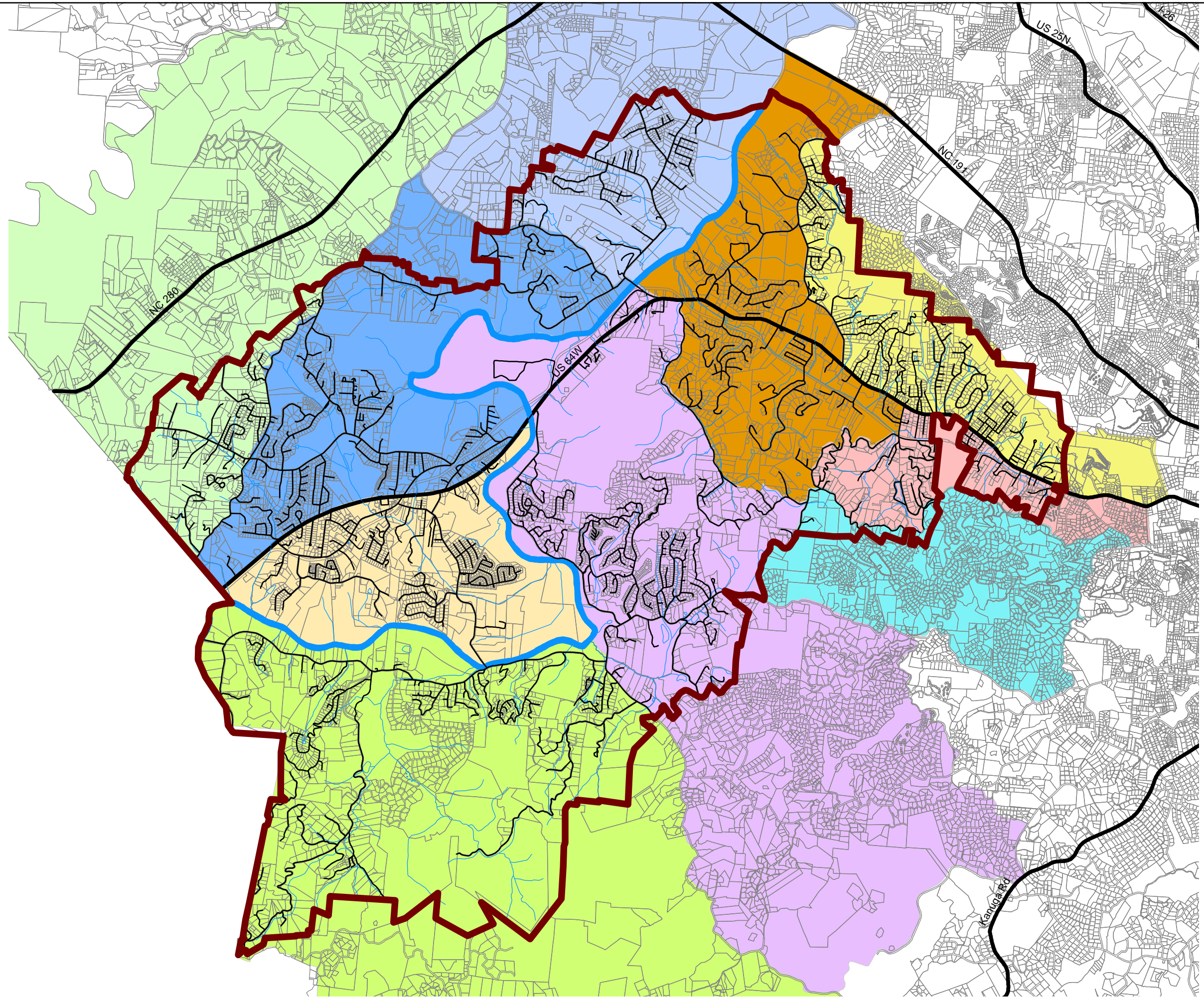
-  Major Roads
-  Streets
-  Streams
-  French Broad River
- 2000 Block Groups**
-  2000 99.07 3
-  2000 99.07 4
-  2000 99.07 5
-  2000 99.07 6
-  2000 99.17 1
-  2000 99.18 2
-  2000 99.18 3
-  2000 99.18 4
-  2000 99.19 1
-  2000 99.19 2
-  Parcels
-  Etowah and Horse Shoe Planning Area

1 inch = 0.81 miles

0 0.3 0.6 Miles

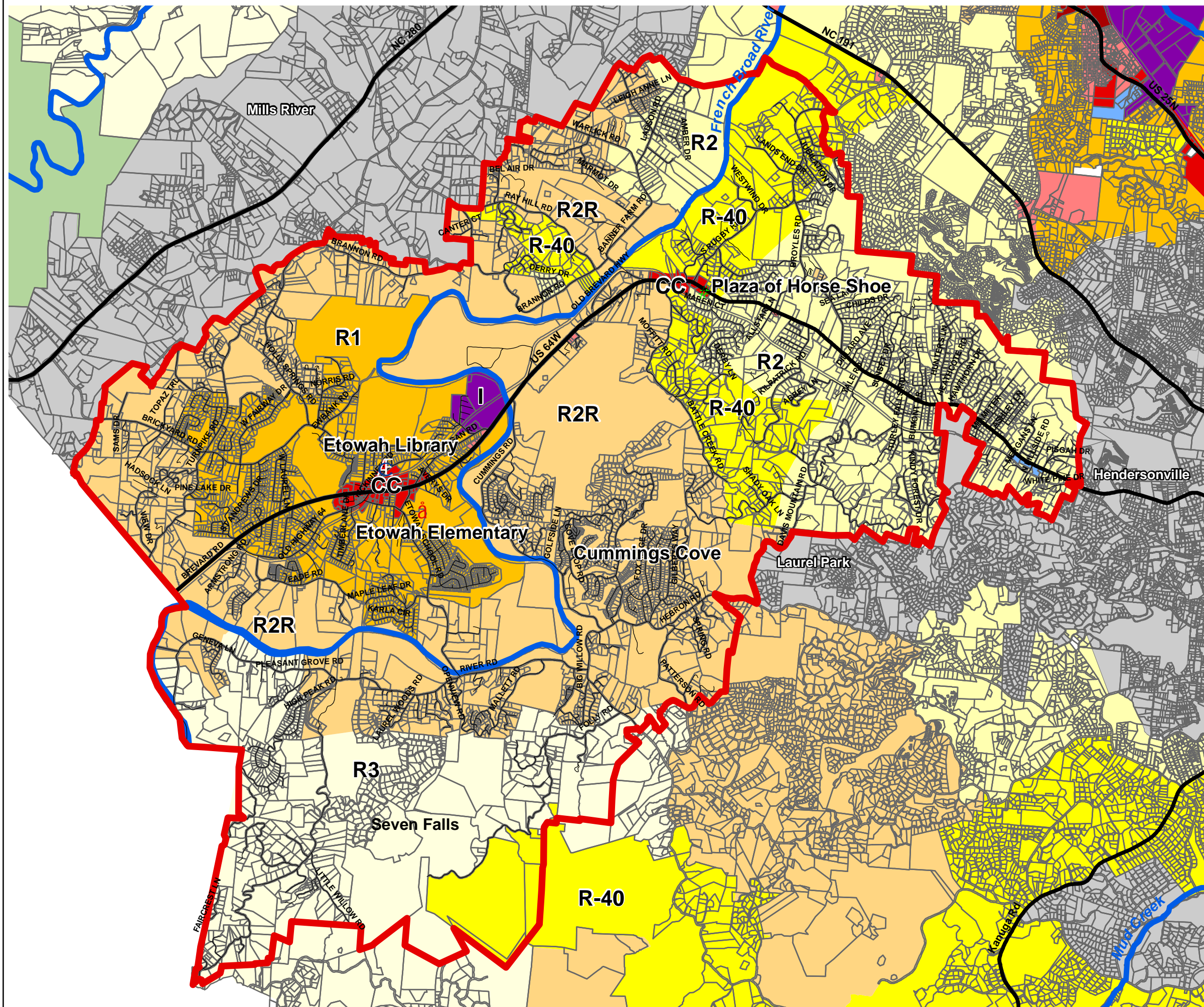


This map is prepared from the inventory of real property found within this jurisdiction, and is compiled from recorded deeds, plats, and other public records and data. Users of this map, are hereby notified that the aforementioned public primary information sources should be consulted for verification of the information contained on this map. The County and mapping company assume no legal responsibility for the information contained on this map.



# Etowah and Horse Shoe Communities Planning Area

## Current Zoning Map



- Etowah and Horse Shoe Planning Area
- Streets
- Major Roads
- Major Streams
- Parcels
- Residential 4
- Residential 3
- Residential 2 - Rural
- Residential 2
- Residential 1
- R-40
- WR
- SW
- O&I
- Local Commercial
- Community Commercial
- Regional Commercial
- Industrial
- Municipal Limits
- Municipal ETJ

1 inch = 0.76 miles  
 0 0.35 0.7 Miles

This map is prepared from the inventory of real property found within this jurisdiction, and is compiled from recorded deeds, plats, and other public records and data. Users of this map, are hereby notified that the aforementioned public primary information sources should be consulted for verification of the information contained on this map. The County and mapping company assume no legal responsibility for the information contained on this map.

# Etowah and Horse Shoe Communities Planning Area

## Natural Resources Map

- Major Roads
  - Streets
  - Major Streams
  - Impaired Waters (303d)
  - Etowah and Horse Shoe Planning Area
  - Protected Ridges Buffer
  - CMLC Easements in Henderson County
  - Bog Systems
  - National Wetlands Inventory
  - Floodway
  - 100-Year Floodplain
  - 500-Year Floodplain
  - Water Supply Watershed (WSIV)
  - Municipalities
- \*Natural Heritage Inventory Sites**
- National
  - State
  - Regional
  - Local

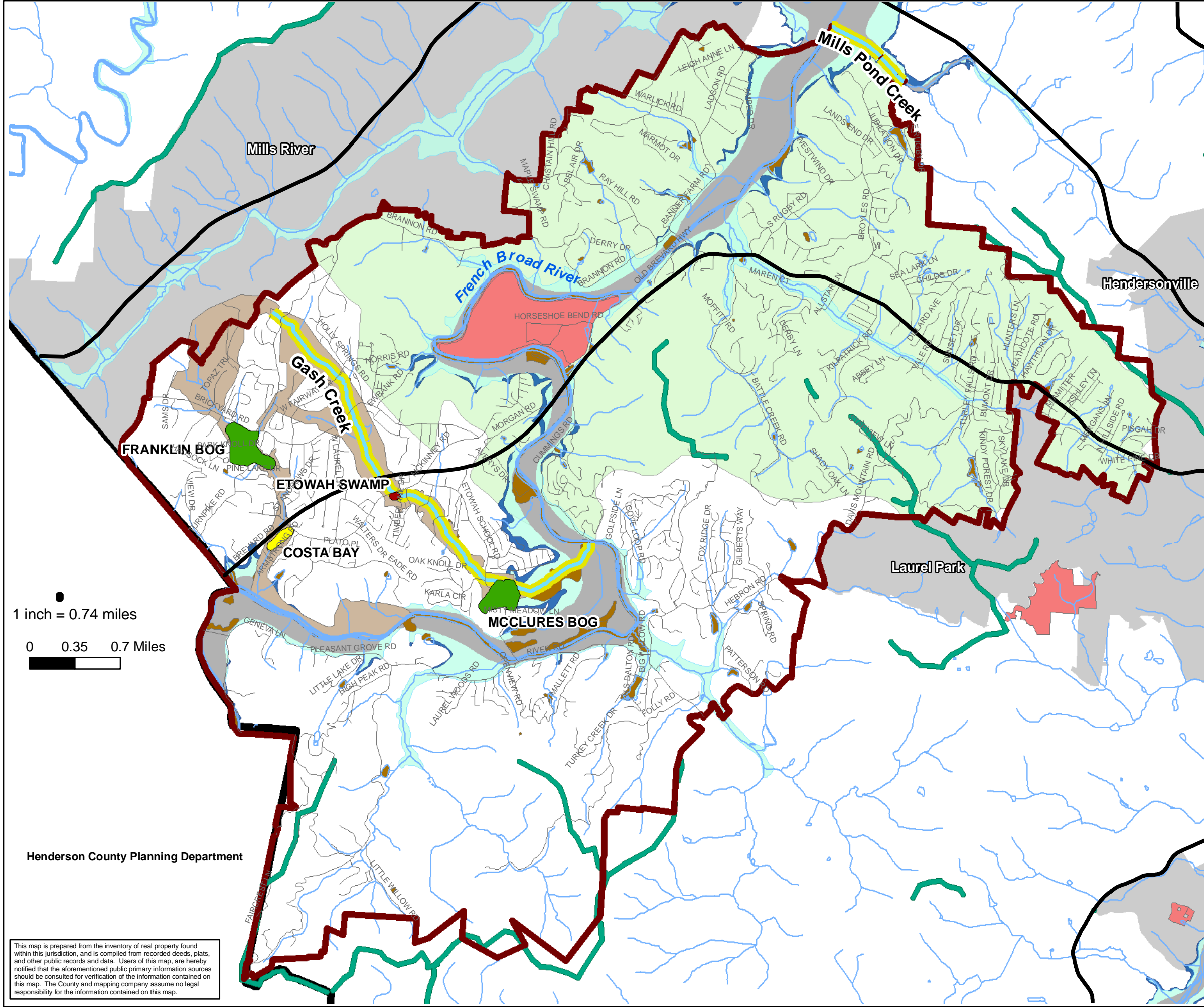
\*NC Natural Heritage Inventory Significance of Site

National: The site contains the "best" occurrences of a particular Natural Heritage Program element (species or community) known to exist anywhere within its range; usually "best" is defined as the top five sites.

State: The site contains the "best" occurrences within the state that are not already considered of national significance; again, "best" is usually restricted to just the top five such examples.

Regional: The site contains the "best" occurrences within a given region that are not already considered of national or state significance. "Region" is usually defined as an area including the counties contiguous with the county of interest usually a four or five county area.

Local: The site is a biological resource within the county but not of regional significance. Note: not all locally-significant sites have been digitized, and data on these sites are often less extensive.



1 inch = 0.74 miles

0 0.35 0.7 Miles

Henderson County Planning Department

This map is prepared from the inventory of real property found within this jurisdiction, and is compiled from recorded deeds, plats, and other public records and data. Users of this map, are hereby notified that the aforementioned public primary information sources should be consulted for verification of the information contained on this map. The County and mapping company assume no legal responsibility for the information contained on this map.

# Etowah and Horse Shoe Communities Planning Area

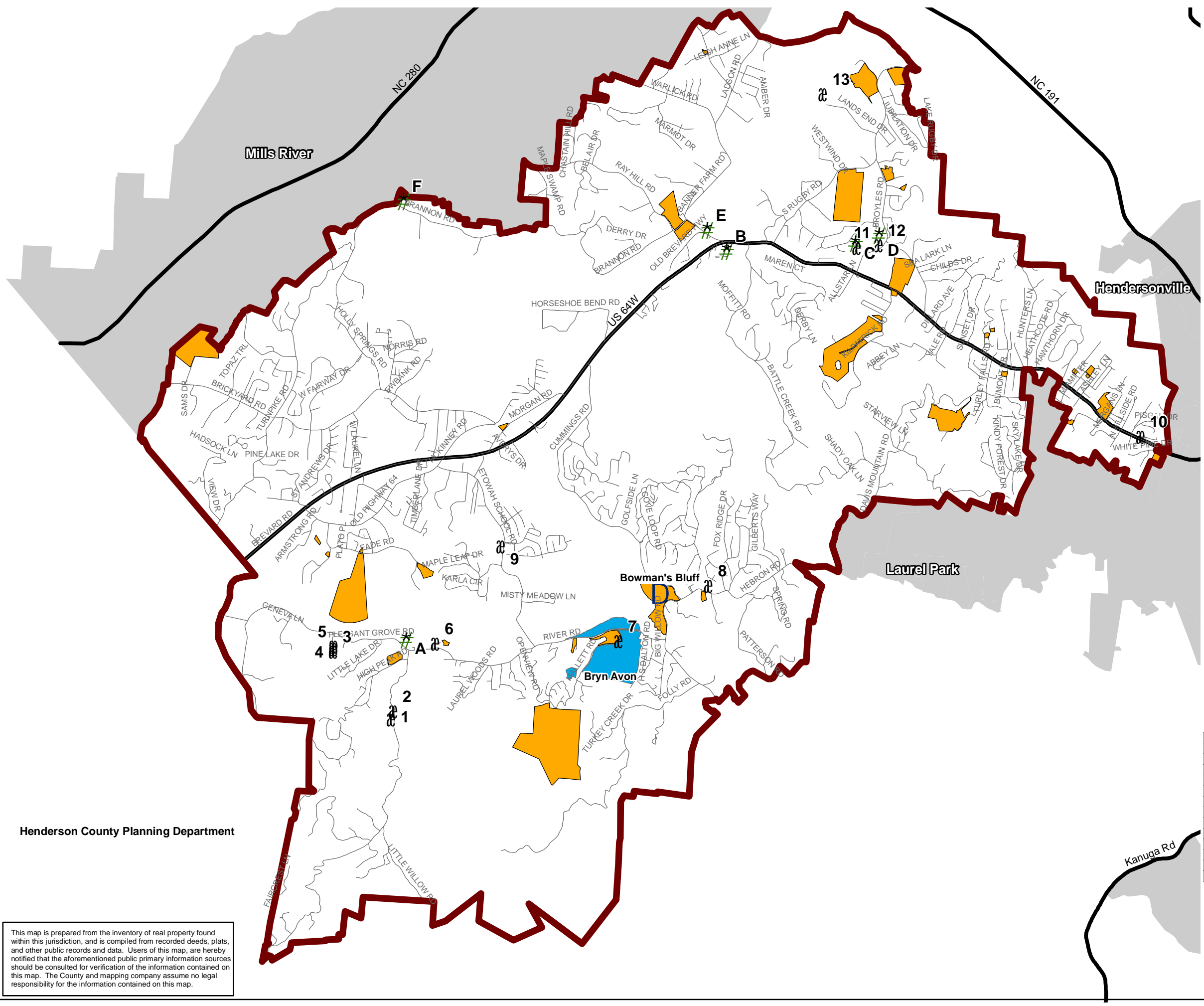
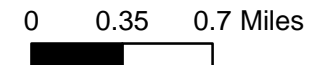
## Cultural Resources Map

- Major Roads
- Streets
- Etowah and Horse Shoe Planning Area
- Historic Sites
- Cemetery
- Historic Church
- Parcels with Structures 100+ years
- National Historic Register
- Municipalities

LETTER	CHURCH NAME
A	PLEASANT GROVE BAPTIST CHURCH
B	HORSE SHOE BAPTIST CHURCH
C	SHAWS CREEK A M E ZION CHURCH
D	SHAWS CREEK CAMPGROUND CHURCH
E	CUMMINGS MEMORIAL UNITED METHODIST CHURCH
F	HOLLY SPRINGS UNION CHAPEL

NUMBER	CEMETERY NAME
1	PLEASANT GROVE BAPTIST CHURCH CEMETERY
2	JUSTUS FAMILY CEMETERY-PLEASANT GROVE BAPTIST CHURCH
3	AIKEN -OLD BEULAH BAPTIST
4	OLD BEULAH BAPTIST CHURCH CEMETERY
5	ORR -OLD BEULAH BAPTIST
6	FLETCHER-THOMAS CEMETERY
7	MALLET CEMETERY
8	BEULAH BAPTIST CHURCH CEMETERY
9	OAK FOREST CEMETERY
10	SHAWS CREEK BAPTIST CHURCH CEMETERY
11	SHAWS CREEK AME ZION CHURCH CEMETERY
12	SHAWS CREEK METHODIST CAMPGROUND CHURCH AND CEMETERY
13	OLD FRENCH BROAD BAPTIST CHURCH CEMETERY

1 inch = 0.74 miles

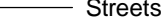
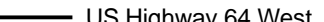


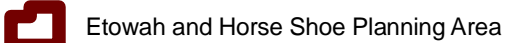

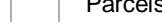
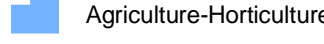
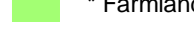


Henderson County Planning Department

This map is prepared from the inventory of real property found within this jurisdiction, and is compiled from recorded deeds, plats, and other public records and data. Users of this map, are hereby notified that the aforementioned public primary information sources should be consulted for verification of the information contained on this map. The County and mapping company assume no legal responsibility for the information contained on this map.

# Etowah and Horse Shoe Communities Planning Area

## Agricultural Map

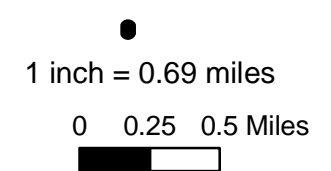
-  Streets
-  US Highway 64 West
-  French Broad River
-  Present Use Value
-  Etowah and Horse Shoe Planning Area
-  Voluntary Agricultural Districts
-  Parcels
-  Agriculture-Horticulture
-  \* Farmland

\* The property shown as farmland may have some type of agriculture, horticulture, forestry operations or other type of use. The farmland data is not current. This data shows property that either currently has or at one time had some type of farming operation.

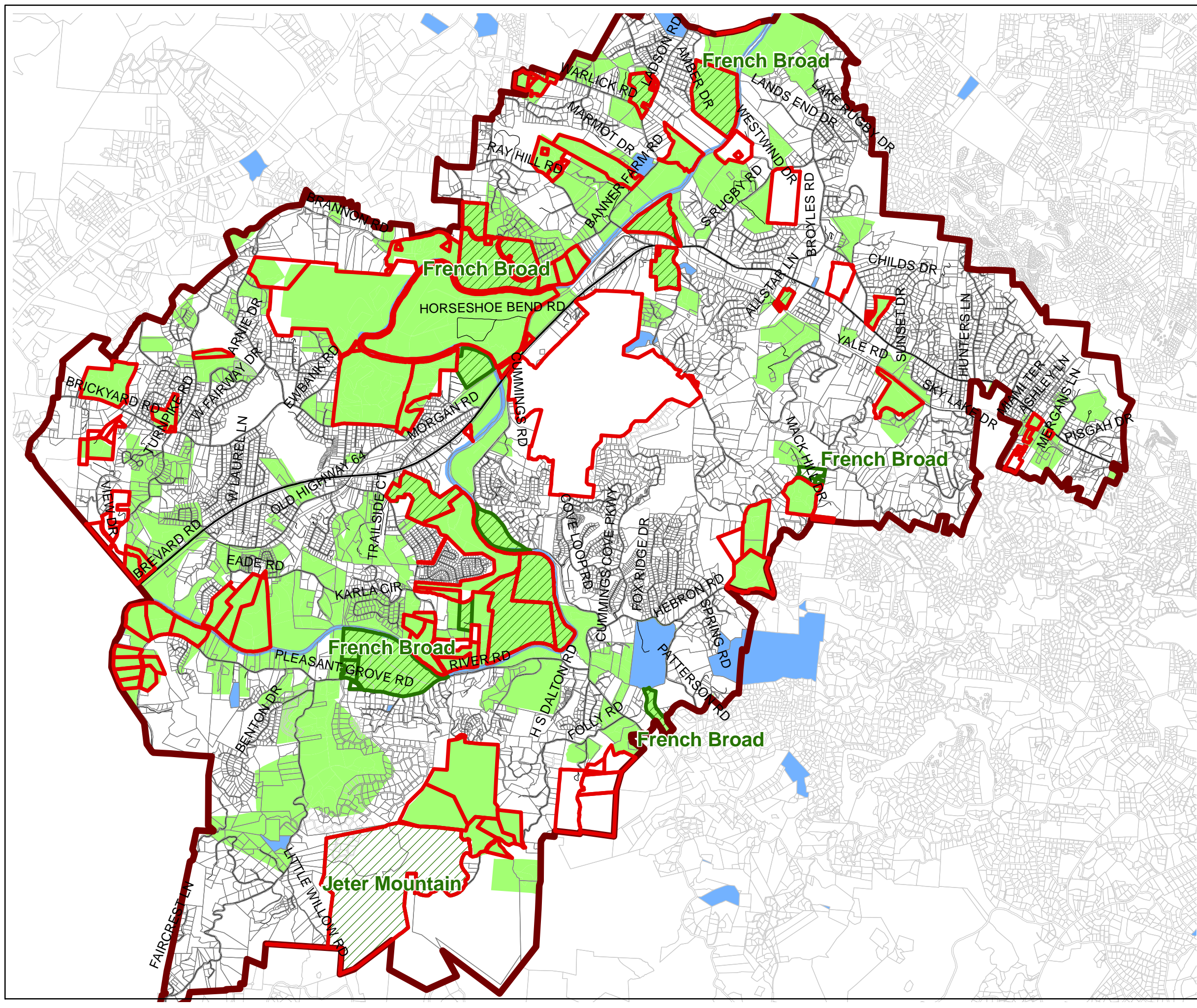
The farmland shown in blue is land that is currently classified by the County Tax Assessor's office as agriculture, horticulture or forestland.

There is most likely farmland in the Planning Area that is not known or shown on this map.

The dark green labels shown on this map corresponds with the voluntary agricultural district.



















This map is prepared from the inventory of real property found within this jurisdiction, and is compiled from recorded deeds, plats, and other public records and data. Users of this map, are hereby notified that the aforementioned public primary information sources should be consulted for verification of the information contained on this map. The County and mapping company assume no legal responsibility for the information contained on this map.




# Etowah and Horse Shoe Communities Planning Area

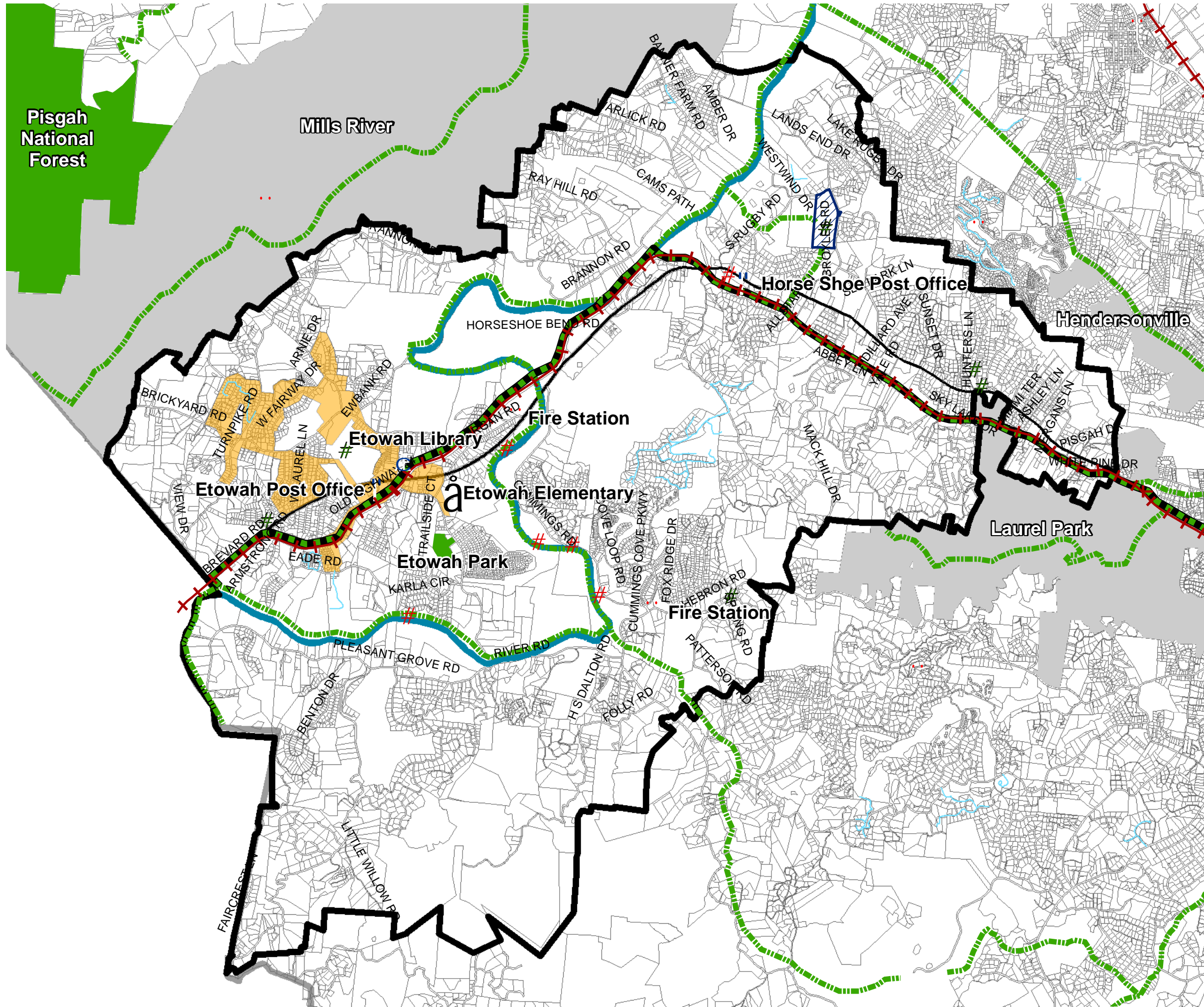
## Community Facilities & Services Map

-  Streets
-  Railroad
-  Proposed Apple Country Greenways
-  Recommended Greenway
-  French Broad River
-  City of Hendersonville Water Lines
-  City of Hendersonville Sewer Lines
-  Individual Dischargers
-  WWTP
-  Etowah Sewer Company
-  Post Offices
-  Fire Stations
-  Kellogg Center
-  Etowah Park
-  Etowah and Horse Shoe Planning Area
-  Parcels

1 inch = 0.76 miles  
 0 0.35 0.7 Miles

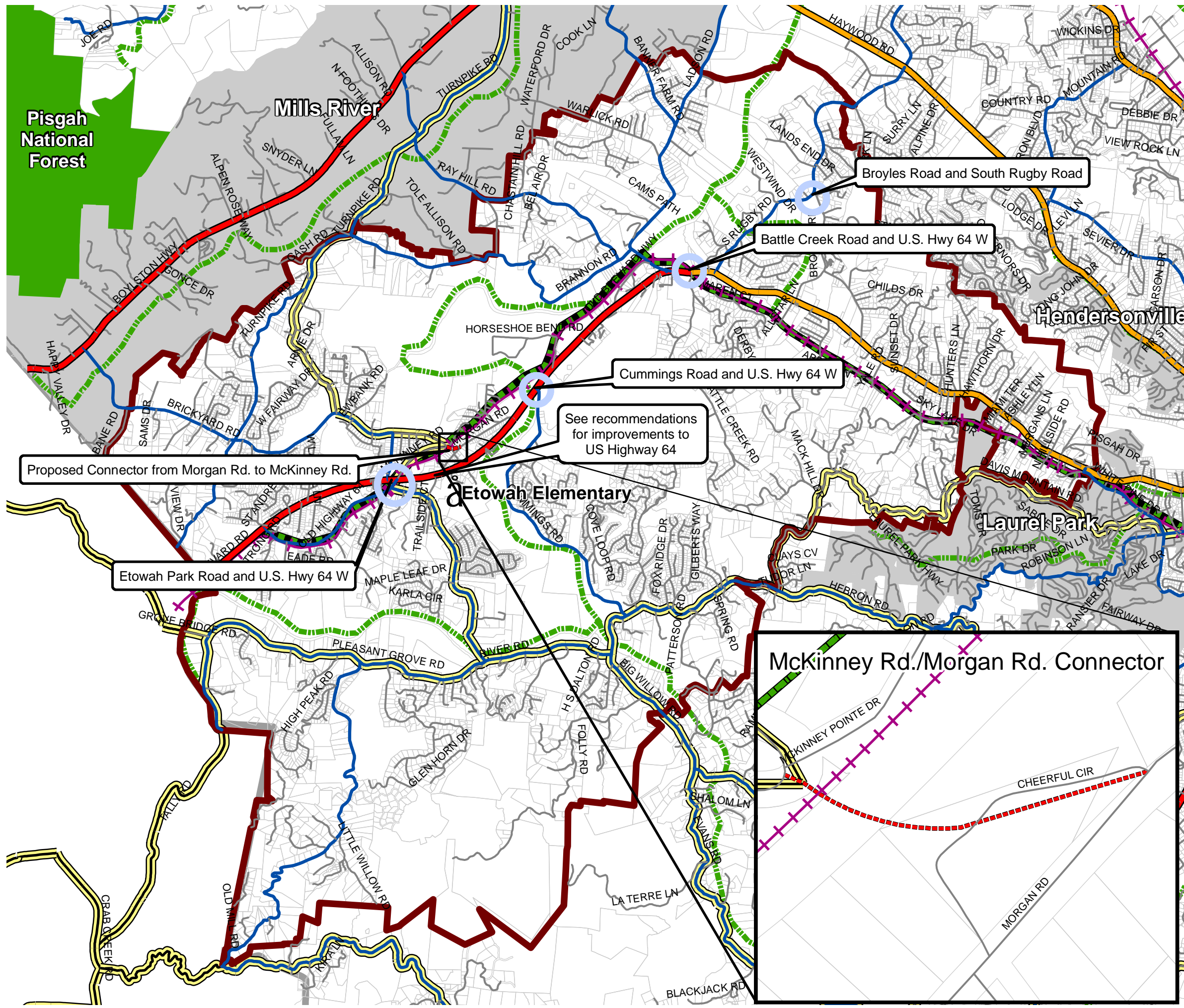


This map is prepared from the inventory of real property found within this jurisdiction, and is compiled from recorded deeds, plats, and other public records and data. Users of this map, are hereby notified that the aforementioned public primary information sources should be consulted for verification of the information contained on this map. The County and mapping company assume no legal responsibility for the information contained on this map.



# Etowah and Horse Shoe Communities Planning Area

## Transportation Map



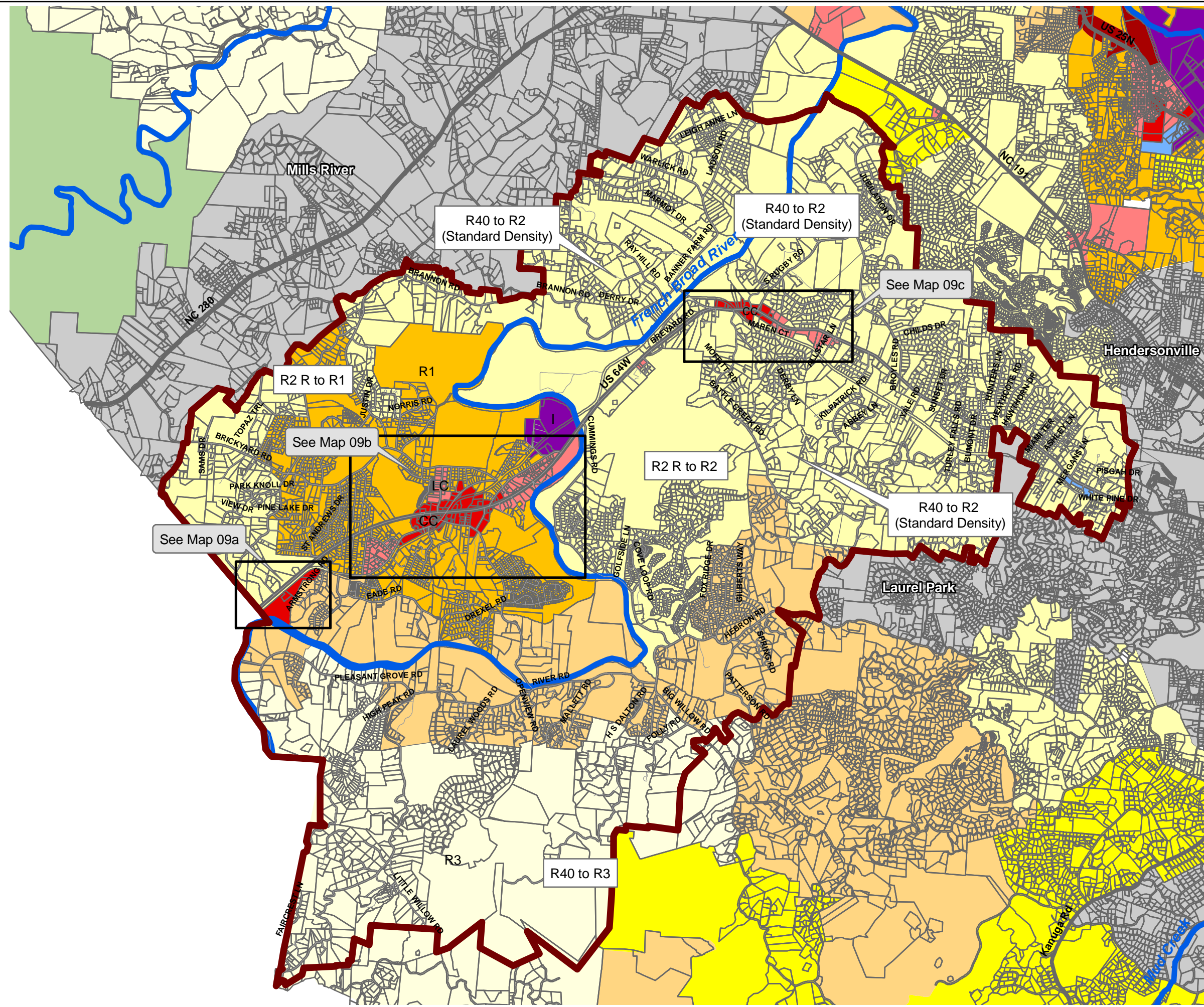
- Road Class**
- Thoroughfare
  - Boulevard
  - Collector
  - Local
  - + Railroad
  - Proposed Connector for McKinney Rd./Morgan Rd.
  - Bike Routes
  - Recommended Greenway
  - Proposed Apple Country Greenways
  - Etowah and Horse Shoe Planning Area
  - Parcels
  - Intersections that Need Improvements

1 inch = 0.77 miles  
 0 0.25 0.5 Miles

This map is prepared from the inventory of real property found within this jurisdiction, and is compiled from recorded deeds, plats, and other public records and data. Users of this map, are hereby notified that the aforementioned public primary information sources should be consulted for verification of the information contained on this map. The County and mapping company assume no legal responsibility for the information contained on this map.



# Etowah and Horse Shoe Communities Planning Area Land Use Recommendations Map



- Etowah and Horse Shoe Planning Area
- Streets
- Major Roads
- Major Streams
- Parcels
- Proposed Zoning Changes**
- Residential 4
- Residential 3
- Residential 2 - R
- Residential 2
- Residential 1
- R-40
- WR
- SW
- O&I
- Local Commercial
- Community Commercial
- Regional Commercial
- Industrial
- Municipal Jurisdiction



















1 inch = 0.79 miles

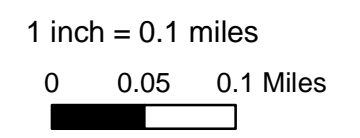
0 0.45 0.9 Miles

This map is prepared from the inventory of real property found within this jurisdiction, and is compiled from recorded deeds, plats, and other public records and data. Users of this map, are hereby notified that the aforementioned public primary information sources should be consulted for verification of the information contained on this map. The County and mapping company assume no legal responsibility for the information contained on this map.

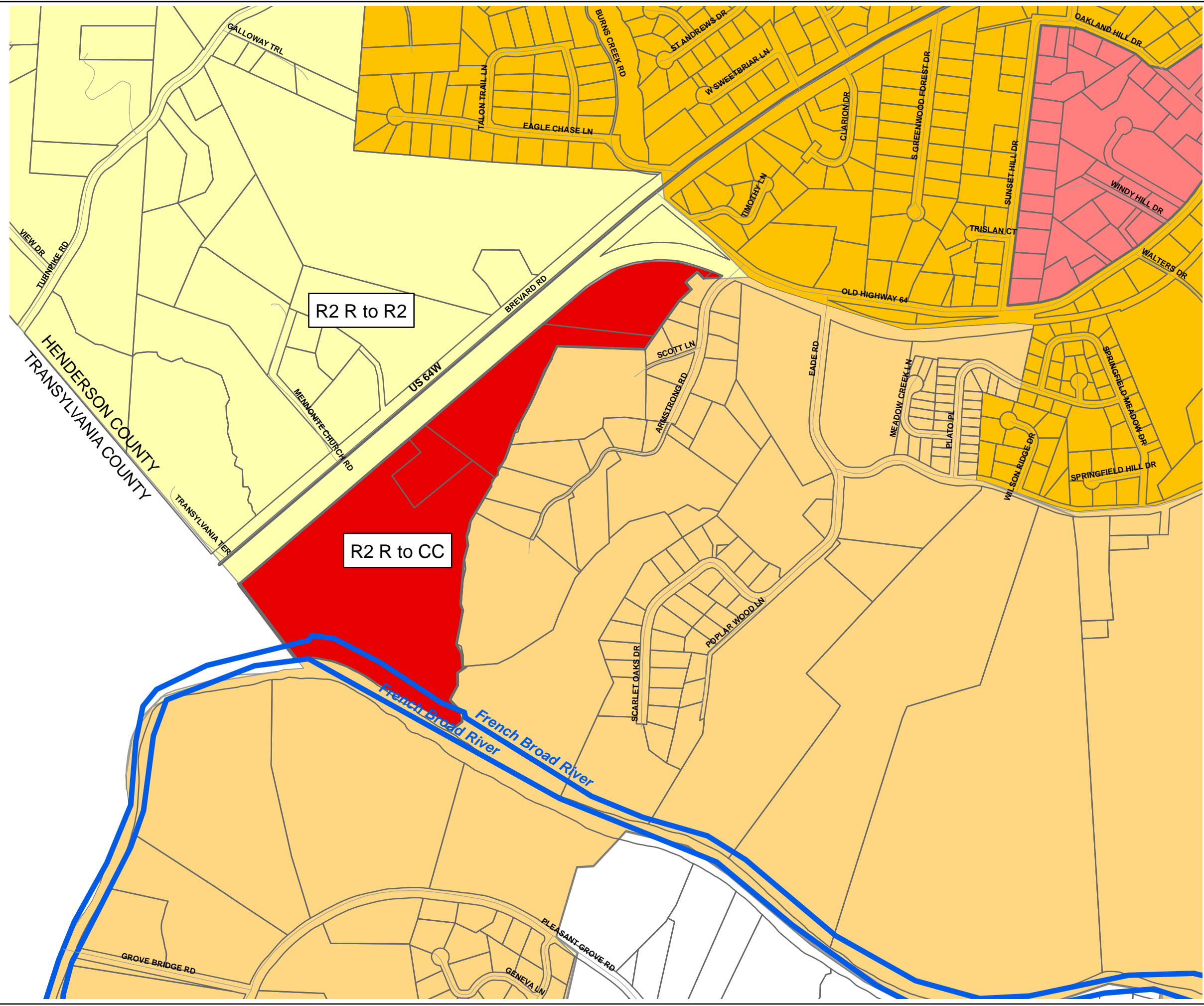
# Etowah and Horse Shoe Communities Planning Area

## Land Use Recommendations Map

-  Streets
-  Major Roads
-  Major Streams
- Proposed Zoning Changes**
-  Residential 4
-  Residential 3
-  Residential 2 - R
-  Residential 2
-  Residential 1
-  R-40
-  WR
-  SW
-  O&I
-  Local Commercial
-  Community Commercial
-  Regional Commercial
-  Industrial
-  Municipal Jurisdiction
-  Parcels

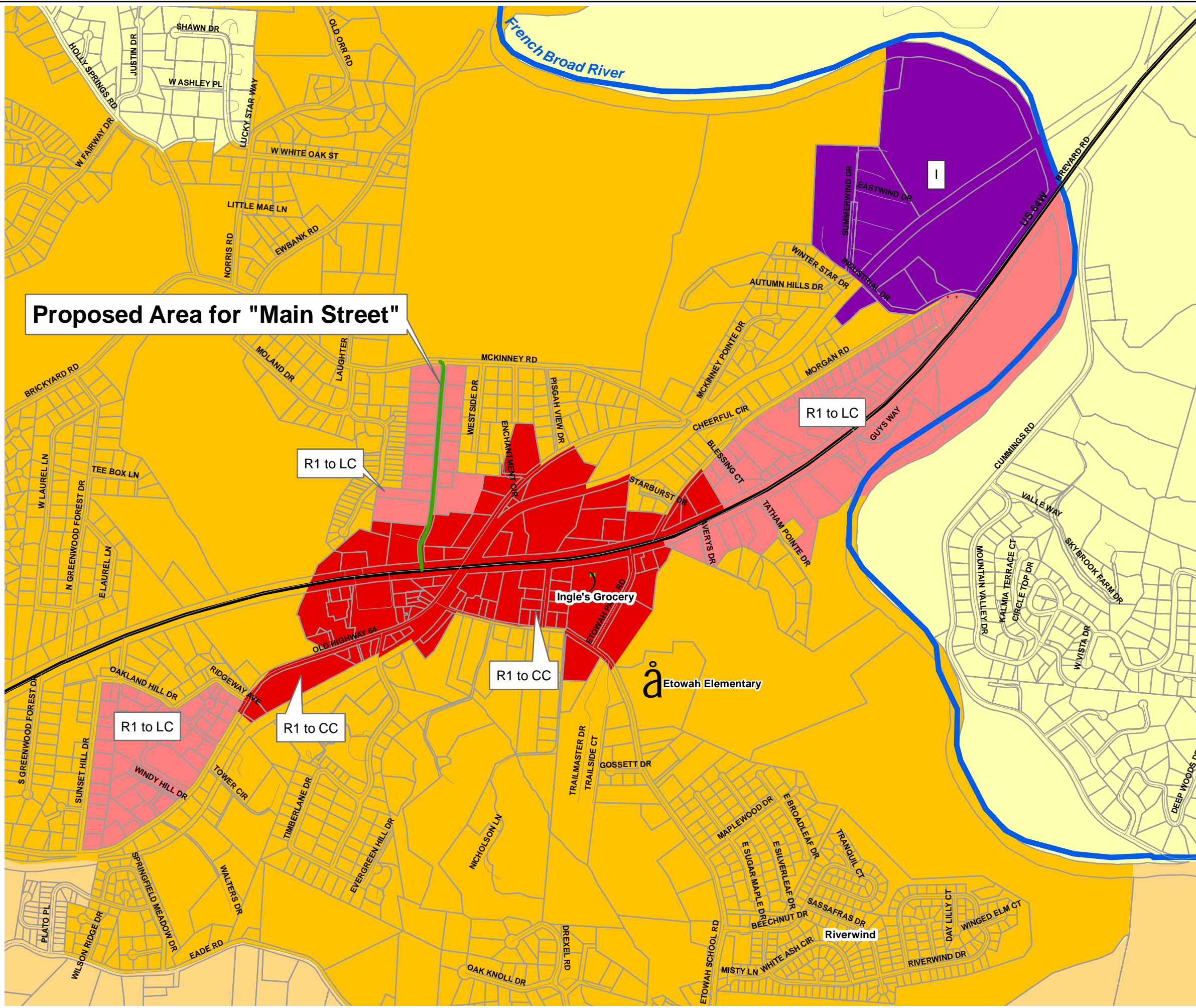


This map is prepared from the inventory of real property found within this jurisdiction, and is compiled from recorded deeds, plats, and other public records and data. Users of this map, are hereby notified that the aforementioned public primary information sources should be consulted for verification of the information contained on this map. The County and mapping company assume no legal responsibility for the information contained on this map.



# Etowah and Horse Shoe Communities Planning Area

## Land Use Recommendations Map



**Proposed Area for "Main Street"**

R1 to LC

R1 to LC

R1 to CC

R1 to CC

R1 to LC

- Major Roads
- Streets
- Main Street
- Major Streams
- Etowah and Horse Shoe Planning Area
- Fire Stations

- Proposed Zoning Changes**
- Residential 4
  - Residential 3
  - Residential 2 - R
  - Residential 2
  - Residential 1
  - R-40
  - WR
  - SW
  - O&I
  - Local Commercial
  - Community Commercial
  - Regional Commercial
  - Industrial
  - Municipal Jurisdiction
  - Parcels

1 inch = 0.18 miles

0 0.1 0.2 Miles

This map is prepared from the inventory of real property found within this jurisdiction, and is compiled from recorded deeds, plats, and other public records and data. Users of this map, are hereby notified that the aforementioned public primary information sources should be consulted for verification of the information contained on this map. The County and mapping company assume no legal responsibility for the information contained on this map.

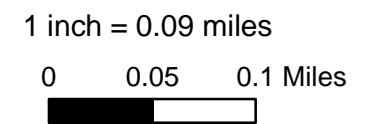
# Etowah and Horse Shoe Communities Planning Area

## Land Use Recommendations Map

- Major Roads
- Streets
- Major Streams

### Proposed Zoning Changes

- Residential 4
- Residential 3
- Residential 2 - R
- Residential 2
- Residential 1
- R-40
- WR
- SW
- O&I
- Local Commercial
- Community Commercial
- Regional Commercial
- Industrial
- Municipal Jurisdiction
- Post Offices
- Parcels



This map is prepared from the inventory of real property found within this jurisdiction, and is compiled from recorded deeds, plats, and other public records and data. Users of this map, are hereby notified that the aforementioned public primary information sources should be consulted for verification of the information contained on this map. The County and mapping company assume no legal responsibility for the information contained on this map.

