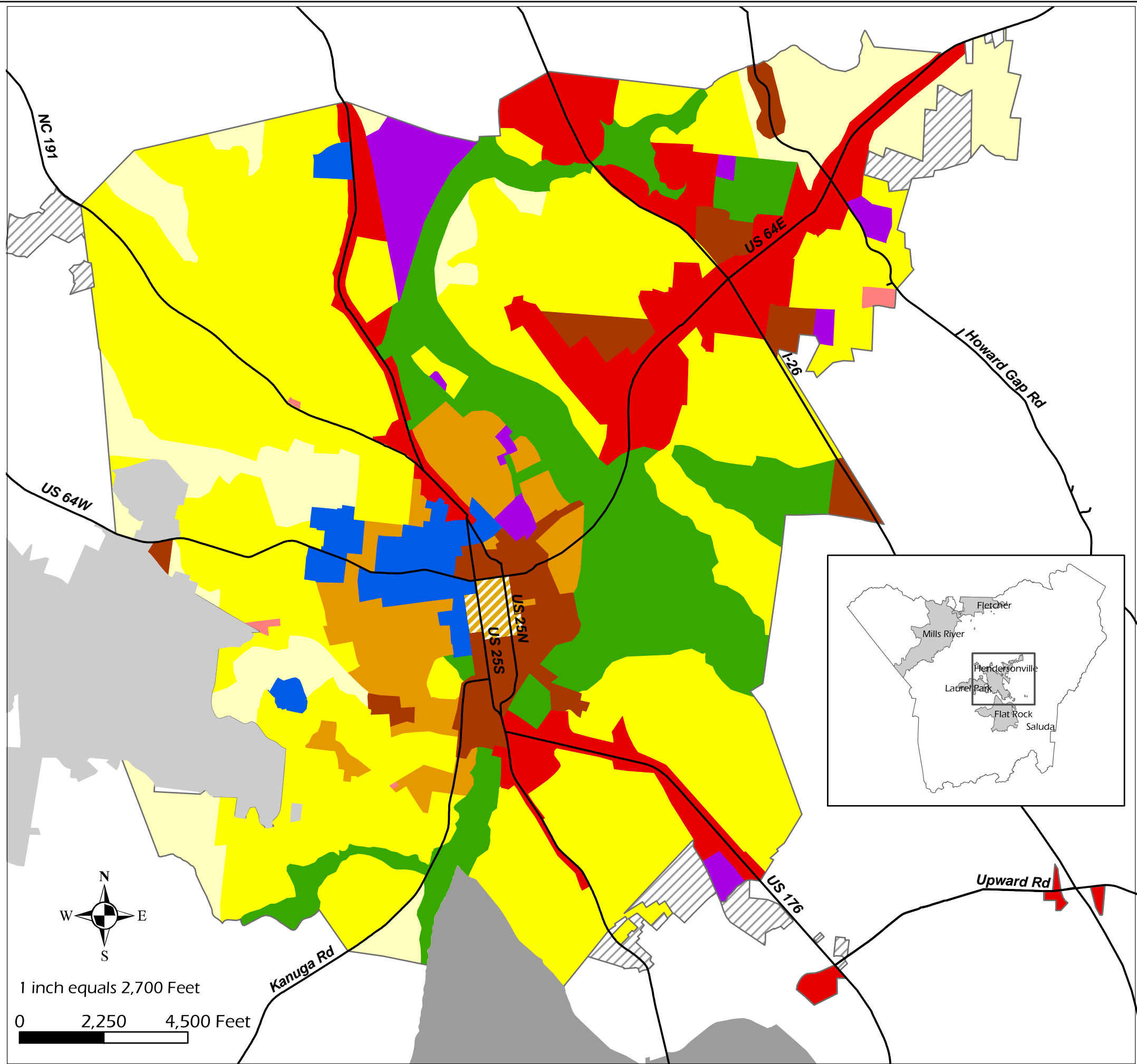
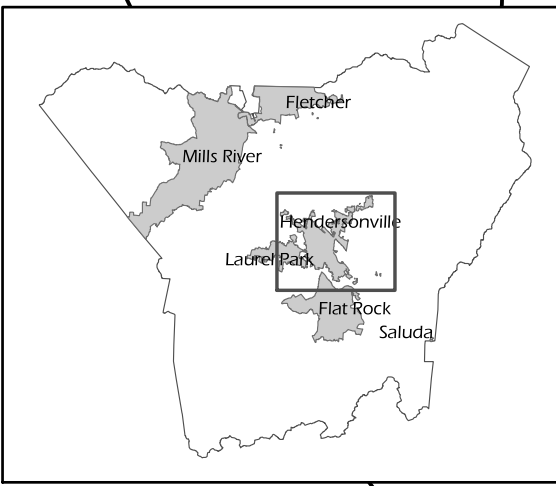


# Henderson County 2020 Comprehensive Plan

## City of Hendersonville 1974 Land Development Plan, as Amended



- Major Roads
- Flat Rock
- Laurel Park
- General Land Use
- ▨ Central Business District
- Conservation/Agriculture/Recreation
- High Density Residential
- Highway Commercial
- Industrial
- Low Density Residential
- Medium Density Residential
- Neighborhood Commercial
- Public/Semi-Public
- Secondary Business
- ▨ Hendersonville Jurisdiction Not Represented in Plan



1 inch equals 2,700 Feet

0 2,250 4,500 Feet

This map was produced by the Henderson County Planning Department, in cooperation with the City of Hendersonville.

This map is prepared for the inventory of real property found within this jurisdiction, and is compiled from recorded deeds, plats, and other public records and data. Users of this map are hereby notified that the aforementioned public primary information sources should be consulted for verification of the information contained on this map. The County and mapping company assume no legal responsibility for the information contained on this map.