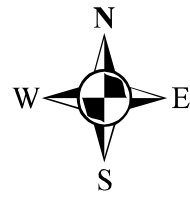
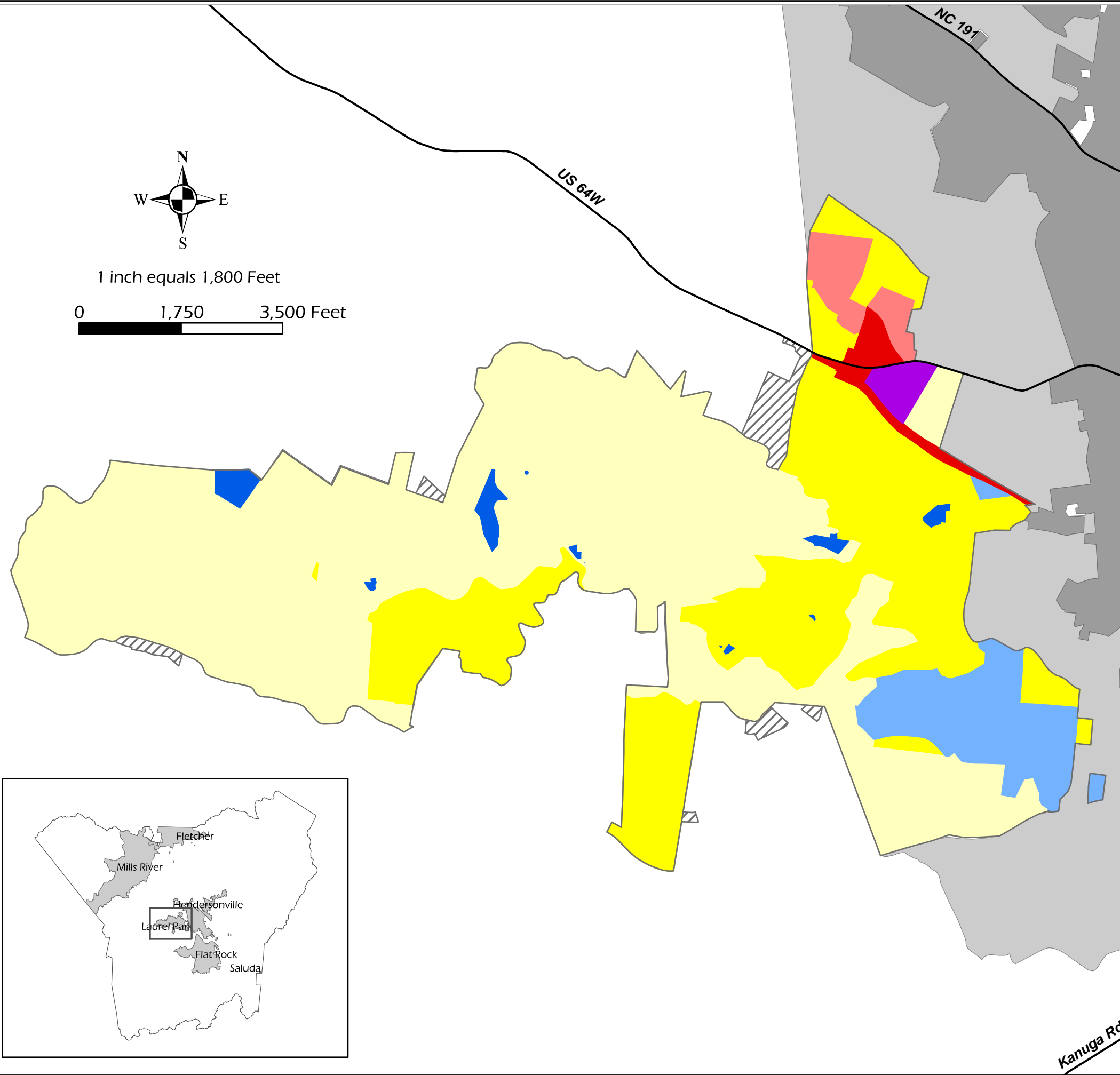
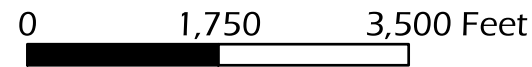


# Henderson County 2020 Comprehensive Plan

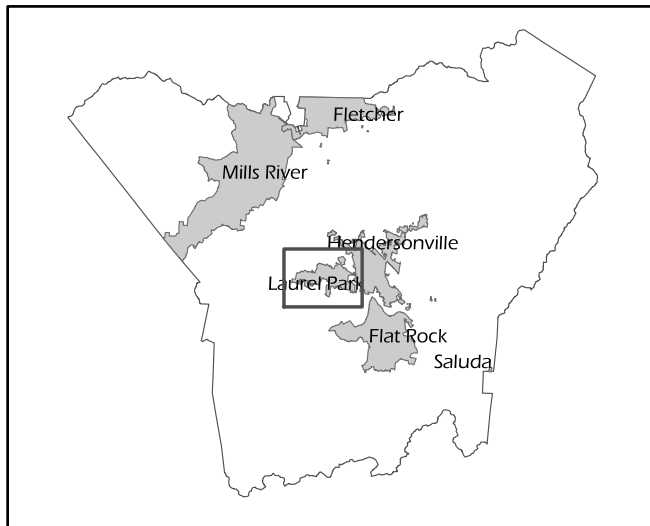
## Town of Laurel Park 1988 Land Use Plan



1 inch equals 1,800 Feet



- Major Roads
- Hendersonville
- Hendersonville ETJ
- General Land Use**
- Commercial
- Governmental
- Industrial
- Low Density Residential
- Medical/Institutional
- Moderate to Low Density Residential
- Semi-Public
- Laurel Park Jurisdiction Not Represented in Plan



This map was produced by the Henderson County Planning Department, in cooperation with the Town of Laurel Park.

This map is prepared for the inventory of real property found within this jurisdiction, and is compiled from recorded deeds, plats, and other public records and data. Users of this map are hereby notified that the aforementioned public primary information sources should be consulted for verification of the information contained on this map. The County and mapping company assume no legal responsibility for the information contained on this map.

Kanuga Rd