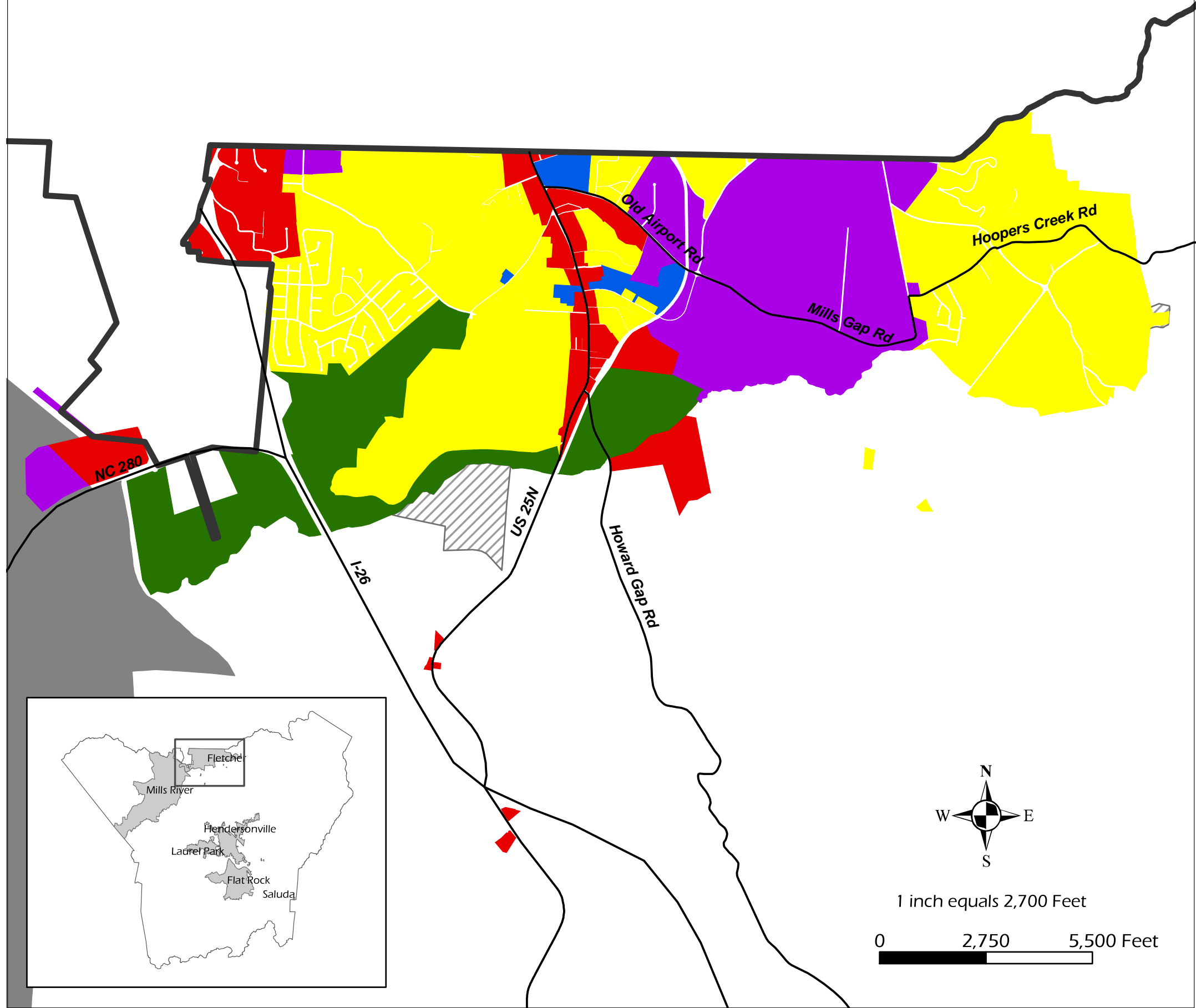
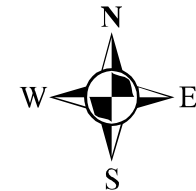
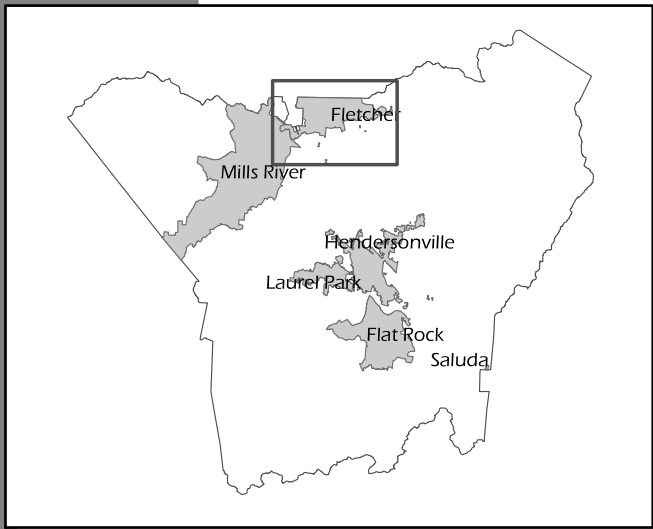


Henderson County 2020 Comprehensive Plan

Town of Fletcher 1993 Land Use Plan, as Amended



-  Major Roads
-  County Border
-  Town of Mills River
- General Land Use**
-  Commercial
-  Industrial
-  Office, Public & Institutional
-  Recreation
-  Residential
-  Fletcher Jurisdiction Not Represented in Plan



1 inch equals 2,700 Feet



This map was produced by the Henderson County Planning Department, in cooperation with the Town of Fletcher.

This map is prepared for the inventory of real property found within this jurisdiction, and is compiled from recorded deeds, plats, and other public records and data. Users of this map are hereby notified that the aforementioned public primary information sources should be consulted for verification of the information contained on this map. The County and mapping company assume no legal responsibility for the information contained on this map.