

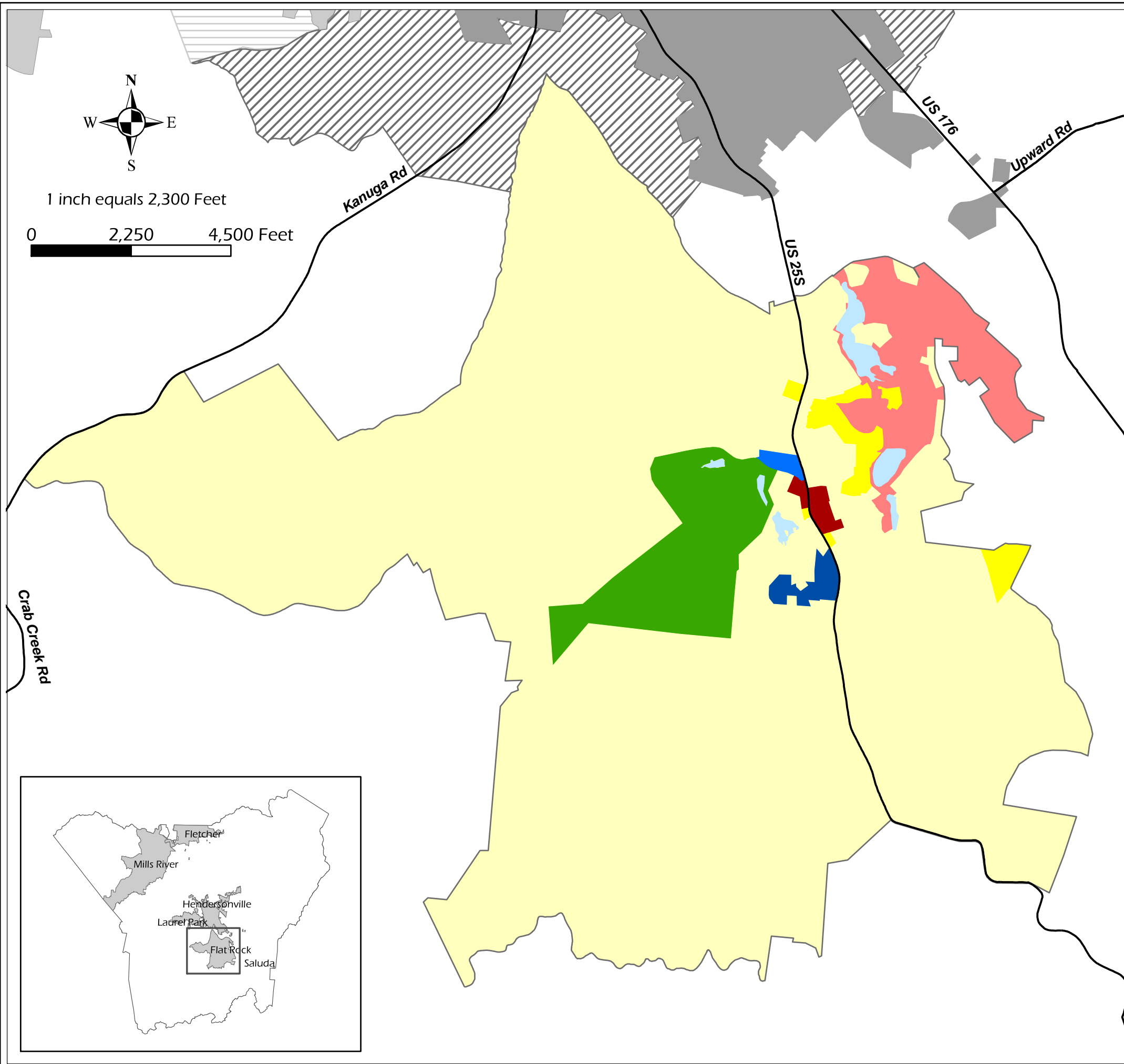
# Henderson County 2020 Comprehensive Plan

## Village of Flat Rock 1998 Land Use Plan, as Amended

- Major Roads
- Hendersonville
- ▨ Hendersonville ETJ
- Laurel Park
- ▨ Laurel Park ETJ
- General Land Use
- Commercial
- Historic Inn
- Low Density Residential
- Moderate Density Residential
- Open Space
- Motel-Lodging
- Performing Arts
- Surface Water
- Village Center

This map was produced by the Henderson County Planning Department, in cooperation with the Village of Flat Rock.

This map is prepared for the inventory of real property found within this jurisdiction, and is compiled from recorded deeds, plats, and other public records and data. Users of this map are hereby notified that the aforementioned public primary information sources should be consulted for verification of the information contained on this map. The County and mapping company assume no legal responsibility for the information contained on this map.



1 inch equals 2,300 Feet

