

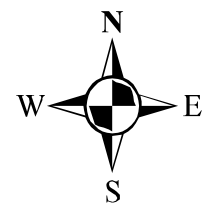
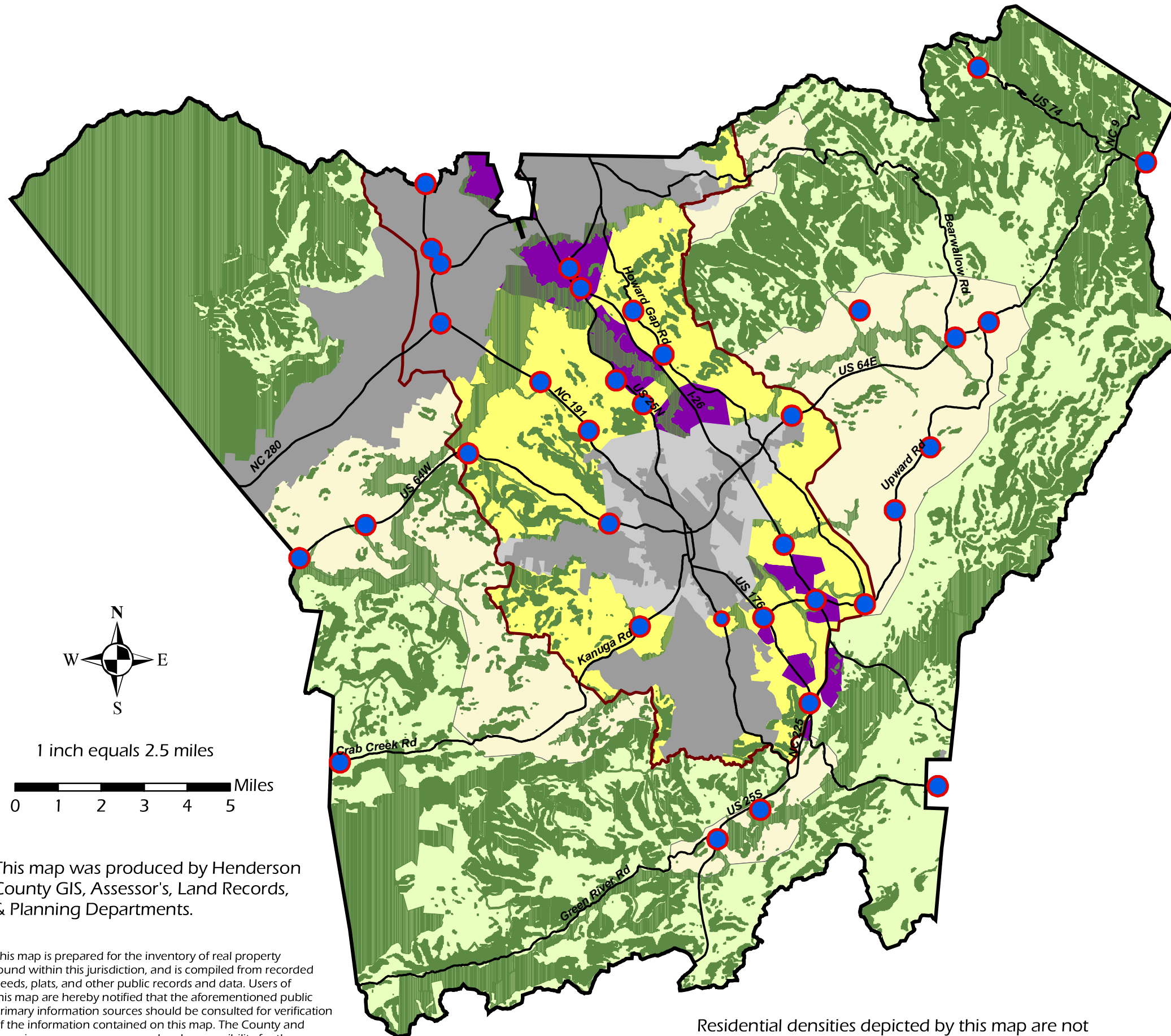
Henderson County Comprehensive Plan

Future Land Use*

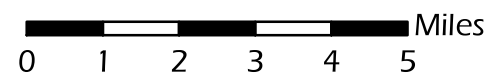
- Major Roads
- ▭ Urban Services Area
- ▭ Municipal Limits
- ▭ Municipal ETJ
- General Land Use**
- Community Service Centers*
- Conservation
- Industrial
- Rural/Agricultural Areas (residential density 5 or more acres per dwelling unit)
- Rural/Urban Transition Areas (residential density 5 or less acres per dwelling unit)
- Urban Services Area (residential density maximized where utilities present)

* This Future Land Use Map is not intended to provide precise, site-level details as to future land use. Rather, it is intended to serve as a general guide for important infrastructural, zoning, and other decisions. This map is subject to change and will be regularly updated.

** Community Service Centers: Intended to contain a mixture of Commercial, Community Facility, and Dense Residential uses; intended to depict general location only, actual size, shape, and range and intensity of uses therein shall be determined by Community Plans and other detailed studies; other Community Service Centers may be identified in the future.



1 inch equals 2.5 miles



This map was produced by Henderson County GIS, Assessor's, Land Records, & Planning Departments.

This map is prepared for the inventory of real property found within this jurisdiction, and is compiled from recorded deeds, plats, and other public records and data. Users of this map are hereby notified that the aforementioned public primary information sources should be consulted for verification of the information contained on this map. The County and mapping company assume no legal responsibility for the information contained on this map.

Residential densities depicted by this map are not absolute. Density will vary within these areas as determined by Community Plans.