

Henderson County 2020 Comprehensive Plan

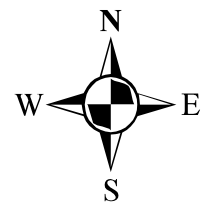
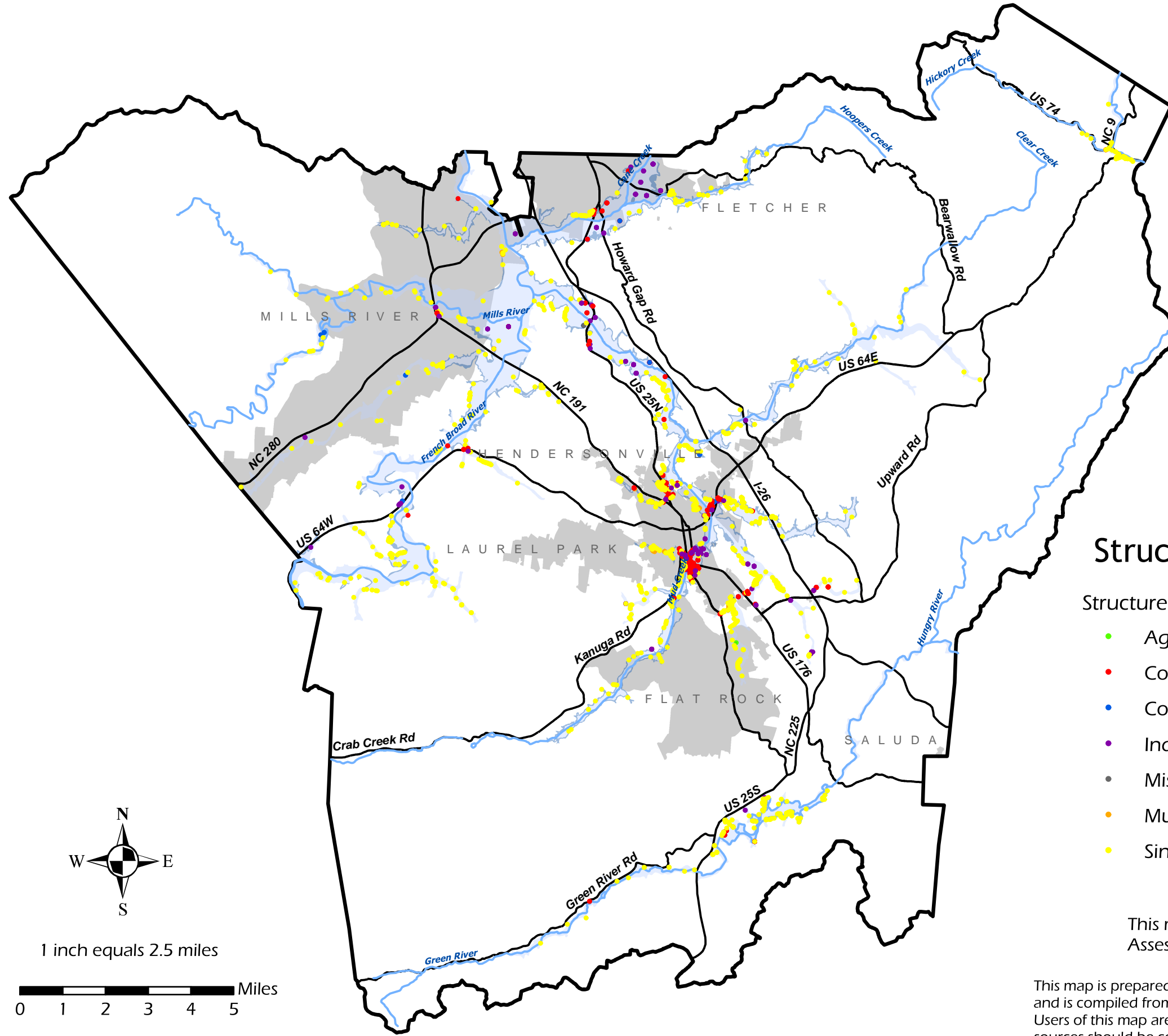
Structures in Flood-Prone Areas	Count	Percent Total
Single-Family Residential	1,281	50%
Commercial	572	22%
Industrial	325	13%
Multi-Family Residential	303	12%
Community Facilities	48	2%
Miscellaneous	48	2%
Agricultural	2	<1%
Total	2,579	100%

Structures in Flood-Prone Areas

- Agriculture
 - Commercial
 - Community Facilities
 - Industrial
 - Miscellaneous
 - Multifamily Residential
 - Single-Family Residential*
- Major Roads
 - Major Streams
 - Municipal Limits
- Flood-Prone Areas**
- 100-Year Floodplain
 - 500-Year Floodplain
- *Includes site-built, modular, and manufactured homes.

This map was produced by Henderson County GIS, Assessor's, Land Records, & Planning Departments.

This map is prepared for the inventory of real property found within this jurisdiction, and is compiled from recorded deeds, plats, and other public records and data. Users of this map are hereby notified that the aforementioned public primary information sources should be consulted for verification of the information contained on this map. The County and mapping company assume no legal responsibility for the information contained on this map.



1 inch equals 2.5 miles

