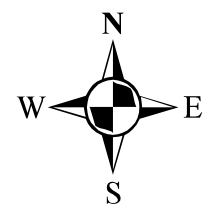
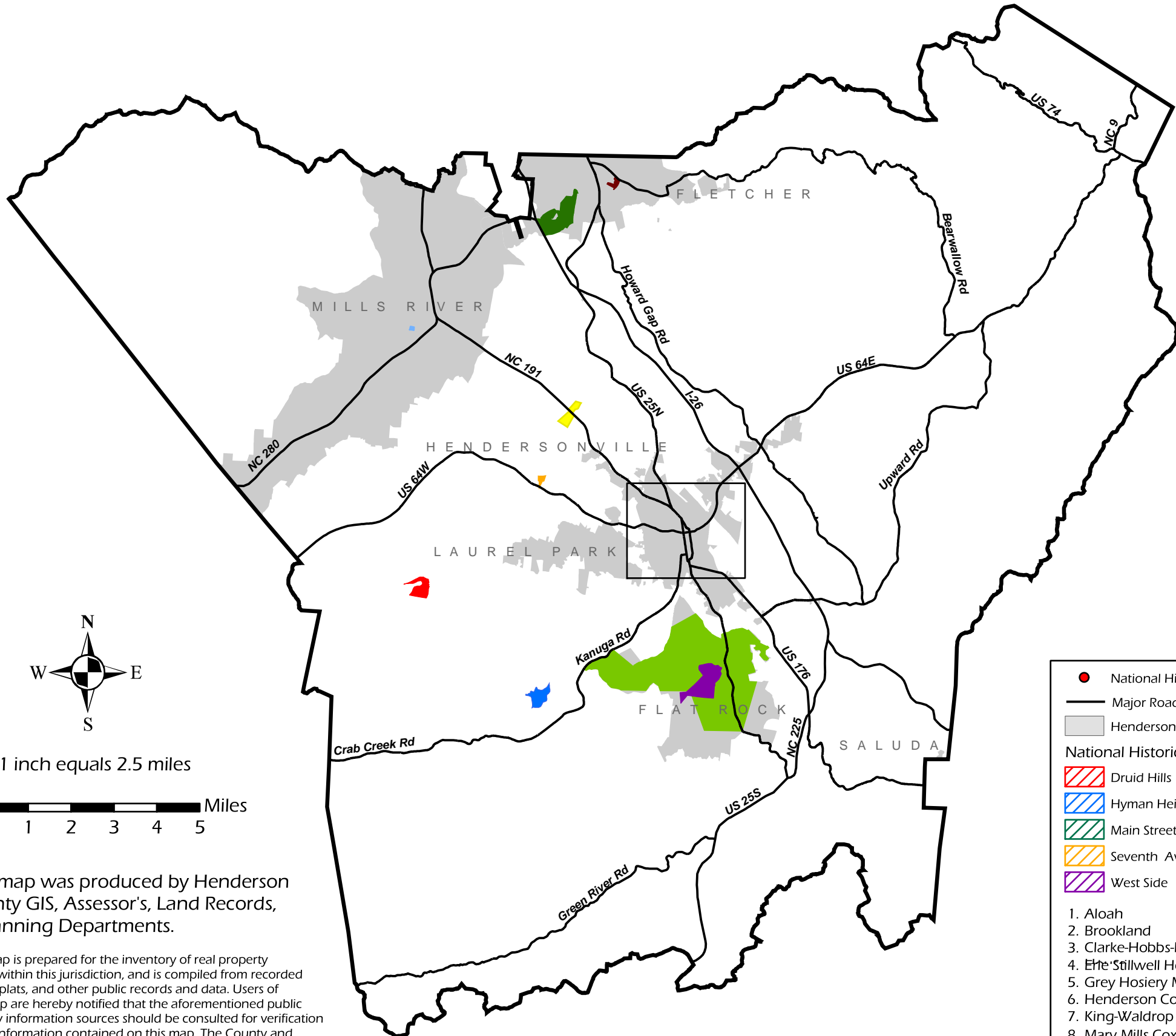


Henderson County 2020 Comprehensive Plan

National Historic Sites and Districts

- Major Roads
- ▭ Municipal Limits
- ▭ National Historic Districts
- ▭ National Historic Sites
- ▭ Flat Rock
- ▭ Kanuga Lake
- ▭ Arthur W. Moore House
- ▭ Bryn Avon
- ▭ Carl Sandburg Home
- ▭ Mills River Chapel
- ▭ Moss-Johnson Farm
- ▭ Rugby Grange
- ▭ The Meadows



1 inch equals 2.5 miles

This map was produced by Henderson County GIS, Assessor's, Land Records, & Planning Departments.

This map is prepared for the inventory of real property found within this jurisdiction, and is compiled from recorded deeds, plats, and other public records and data. Users of this map are hereby notified that the aforementioned public primary information sources should be consulted for verification of the information contained on this map. The County and mapping company assume no legal responsibility for the information contained on this map.



- National Historic Sites
 - Major Roads
 - ▭ Hendersonville
 - National Historic Districts
 - ▭ Druid Hills
 - ▭ Hyman Heights
 - ▭ Main Street
 - ▭ Seventh Avenue Depot
 - ▭ West Side
1. Aloah
 2. Brookland
 3. Clarke-Hobbs-Davidson
 4. The Stillwell House
 5. Grey Hosiery Mill
 6. Henderson County Courthouse
 7. King-Waldrop House
 8. Mary Mills Coxe House
 9. Reese House
 10. The Cedars
 11. The Chewning House
 12. The Waverly

0 0.5 1 Miles