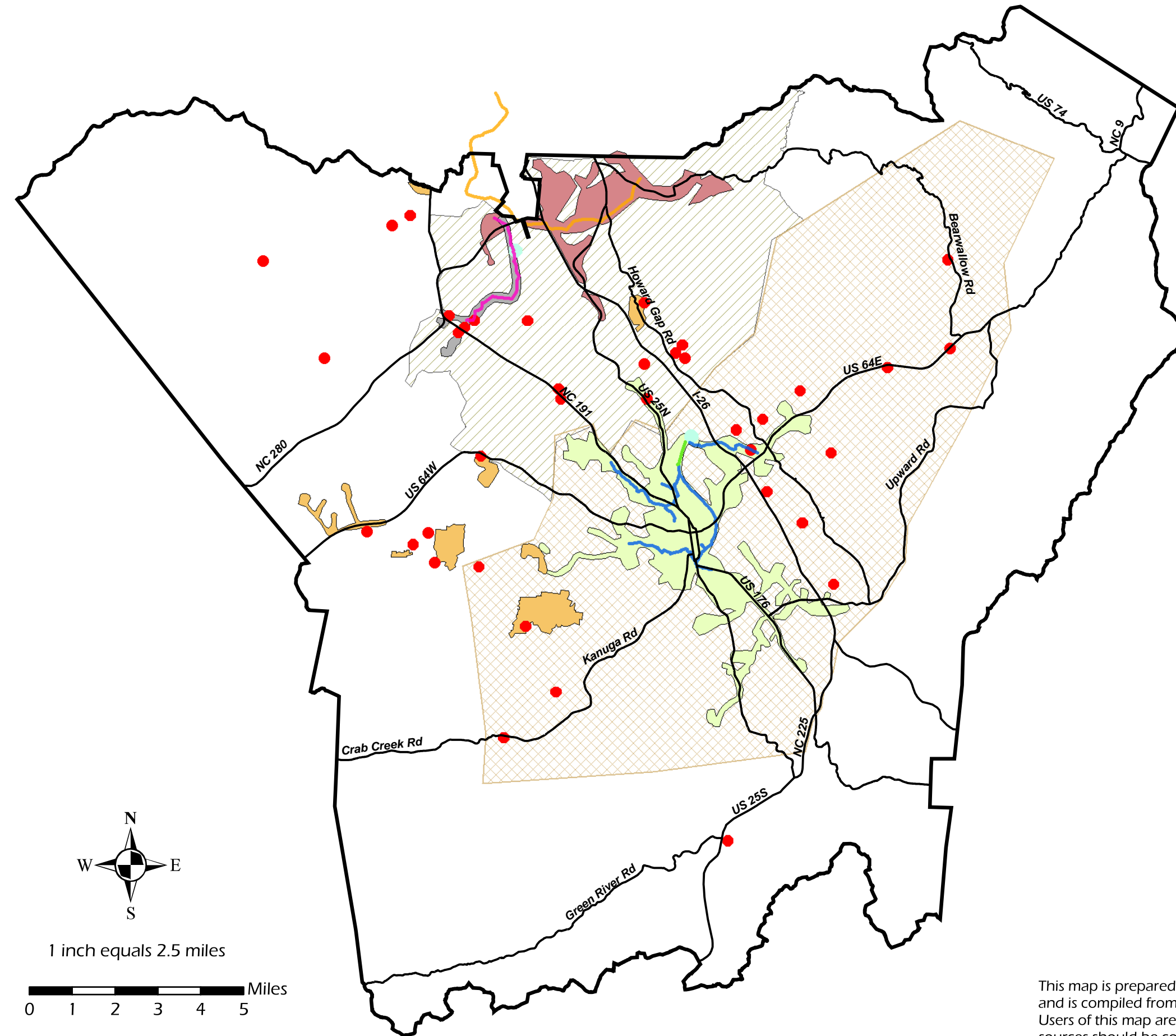


Henderson County 2020 Comprehensive Plan

Sewer Service Areas and Districts

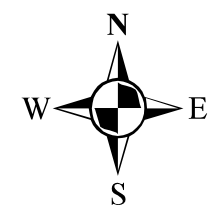


- Major Roads
- Sewer District/Service Areas
 - Cane Creek Water and Sewer District
 - Mud Creek Sewer Service Area*
- Areas Currently Served by Sewer
 - Hendersonville Sewer Service Areas
 - Cane Creek Sewer Service Areas
 - Cane Creek Future Sewer Service Areas
 - Private Sewer Service Areas
- Wastewater Treatment Plants/Discharges
 - Wastewater Treatment Plants/Discharges
 - Wastewater Discharges greater than 1 million gallons per day
- Sewer Lines
 - Future Interceptor Line
 - Hendersonville Lines 12" and greater
 - Hendersonville Lines, Force Main
 - Metropolitan Sewerage District Interceptor Line

*Per agreement between Hendersonville and Henderson County

This map was produced by Henderson County GIS, Assessor's, Land Records, & Planning Departments.

This map is prepared for the inventory of real property found within this jurisdiction, and is compiled from recorded deeds, plats, and other public records and data. Users of this map are hereby notified that the aforementioned public primary information sources should be consulted for verification of the information contained on this map. The County and mapping company assume no legal responsibility for the information contained on this map.



1 inch equals 2.5 miles

