

Henderson County 2020 Comprehensive Plan

Sensitive Natural Areas

- Major Roads
- - - Protected Mountain Ridges
- Major Streams
- Light Blue 100-Year Floodplain
- Dark Blue 500-Year Floodplain
- *Natural Heritage Inventory Sites
 - Green National
 - Orange State
 - Red Regional
 - Yellow Local

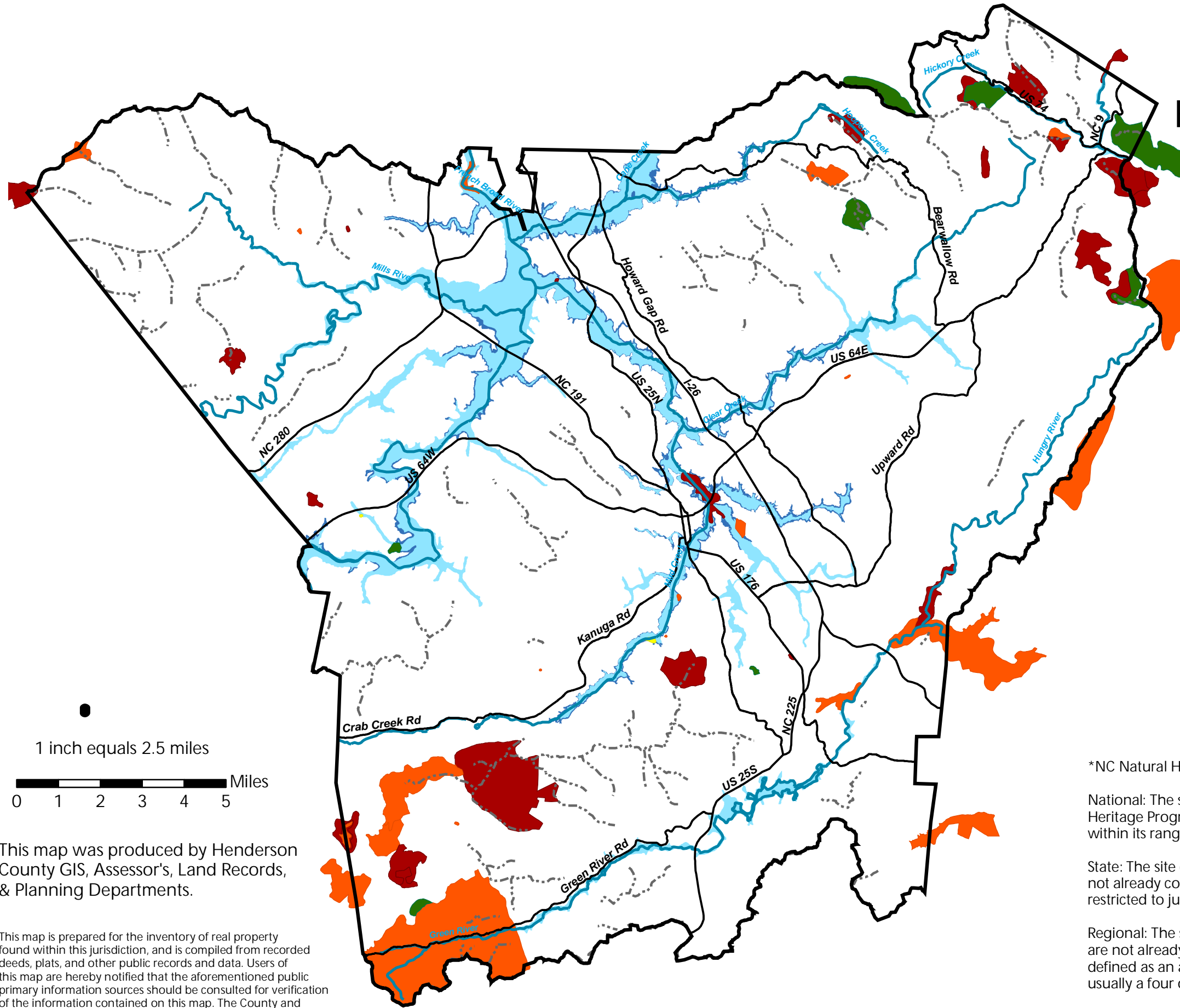
*NC Natural Heritage Inventory Significance of Site

National: The site contains the "best" occurrences of a particular Natural Heritage Program element (species or community) known to exist anywhere within its range; usually "best" is defined as the top five sites.

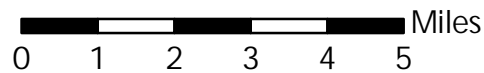
State: The site contains the "best" occurrences within the state that are not already considered of national significance; again, "best" is usually restricted to just the top five such examples.

Regional: The site contains the "best" occurrences within a given region that are not already considered of national or state significance. "Region" is usually defined as an area including the counties contiguous with the county of interest usually a four or five county area.

Local: The site is a biological resource within the county but not of regional significance. Note: not all locally-significant sites have been digitized, and data on these sites are often less extensive.



1 inch equals 2.5 miles



This map was produced by Henderson County GIS, Assessor's, Land Records, & Planning Departments.

This map is prepared for the inventory of real property found within this jurisdiction, and is compiled from recorded deeds, plats, and other public records and data. Users of this map are hereby notified that the aforementioned public primary information sources should be consulted for verification of the information contained on this map. The County and mapping company assume no legal responsibility for the information contained on this map.