

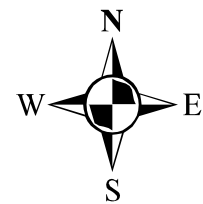
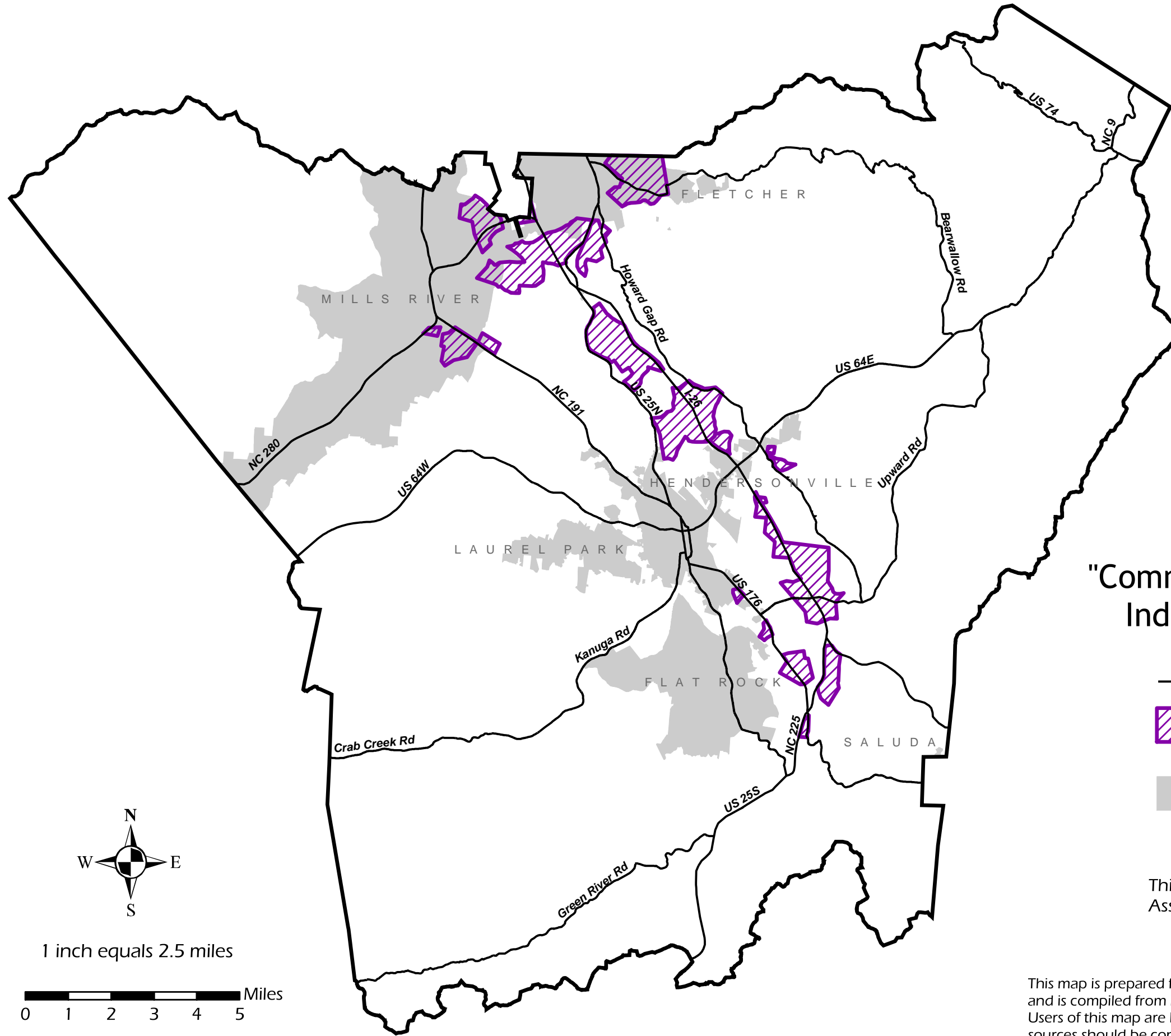
# Henderson County 2020 Comprehensive Plan

## "Committee of 100" Recommended Industrial Development Zones

-  Major Roads
-  Recommended Industrial Development Zones
-  Municipal Limits

This map was produced by Henderson County GIS, Assessor's, Land Records, & Planning Departments.

This map is prepared for the inventory of real property found within this jurisdiction, and is compiled from recorded deeds, plats, and other public records and data. Users of this map are hereby notified that the aforementioned public primary information sources should be consulted for verification of the information contained on this map. The County and mapping company assume no legal responsibility for the information contained on this map.



1 inch equals 2.5 miles

