

Henderson County 2020 Comprehensive Plan

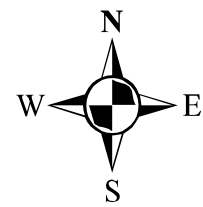
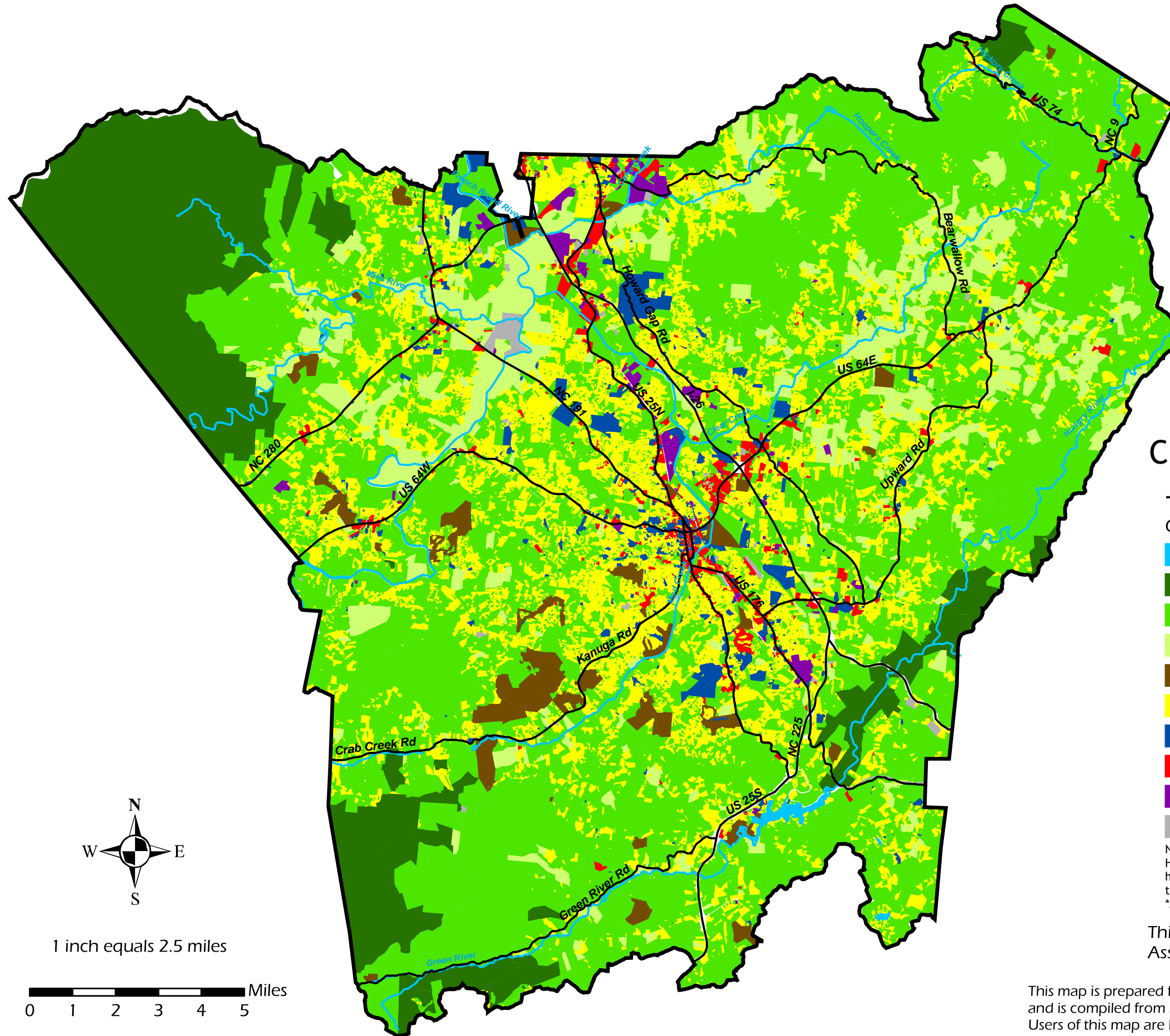
Current General Land Use

- Major Roads
- General Land Use
- Surface Water
- Public/Private Conserved
- Undeveloped*
- Agriculture/Horticulture/Managed Forestland
- Recreation
- Residential
- Community-Cultural
- Commercial
- Industrial
- Transportation-Utility

Note: This map reflects primary general land use of parcels in Henderson County. A parcel is coded by its primary land use, however secondary uses may exist which are not depicted on this map.
 *May include forested as well as agricultural land.

This map was produced by Henderson County GIS, Assessor's, Land Records, & Planning Departments.

This map is prepared for the inventory of real property found within this jurisdiction, and is compiled from recorded deeds, plats, and other public records and data. Users of this map are hereby notified that the aforementioned public primary information sources should be consulted for verification of the information contained on this map. The County and mapping company assume no legal responsibility for the information contained on this map.



1 inch equals 2.5 miles

