

# Henderson County 2020 Comprehensive Plan

## General Soil Map

Codorus-Toxaway-Rosmon association: Nearly level, well drained to very poorly drained soils that have a loamy and sandy subsoil and underlying layer; on flood plains

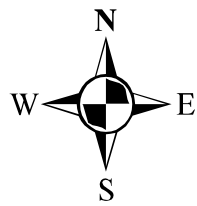
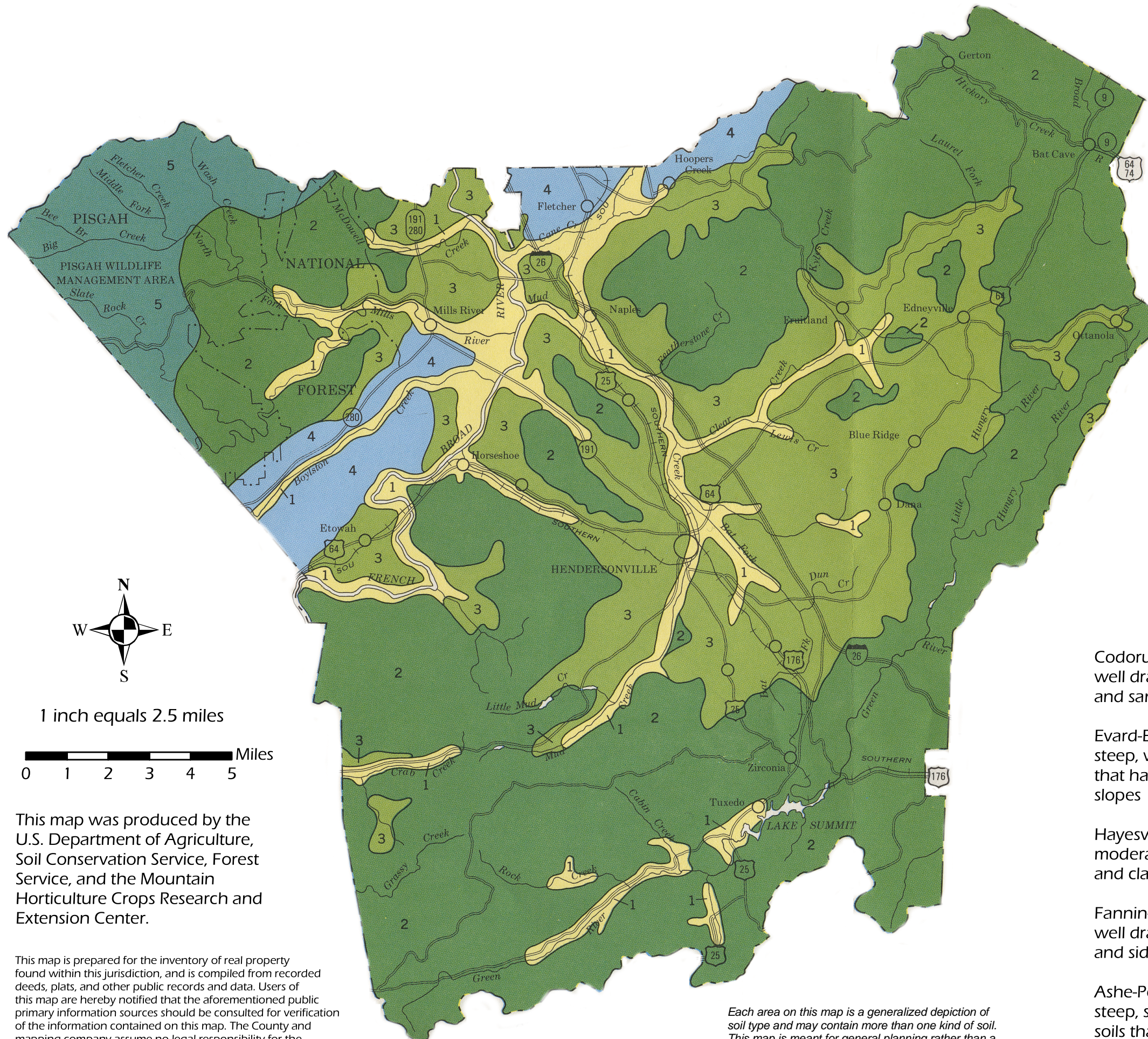
Evard-Edneyville-Ashe association: Sloping to very steep, well drained and somewhat excessively drained soils that have a loamy subsoil; on mountain ridgetops and side slopes

Hayesville-Bradson association: Gently sloping to moderately steep, well drained soils that have a loamy and clayey subsoil; on ridges and stream terraces

Fannin-Talladega association: Sloping to steep, well drained soils that have a loamy subsoil; on ridgetops and side slopes

Ashe-Porters association: Moderately steep to very steep, somewhat excessively drained and well drained soils that have a loamy subsoil; on ridgetops and side slopes

*Each area on this map is a generalized depiction of soil type and may contain more than one kind of soil. This map is meant for general planning rather than a basis for decisions on the use of specific tracts.*



1 inch equals 2.5 miles



This map was produced by the U.S. Department of Agriculture, Soil Conservation Service, Forest Service, and the Mountain Horticulture Crops Research and Extension Center.

This map is prepared for the inventory of real property found within this jurisdiction, and is compiled from recorded deeds, plats, and other public records and data. Users of this map are hereby notified that the aforementioned public primary information sources should be consulted for verification of the information contained on this map. The County and mapping company assume no legal responsibility for the information contained on this map.