

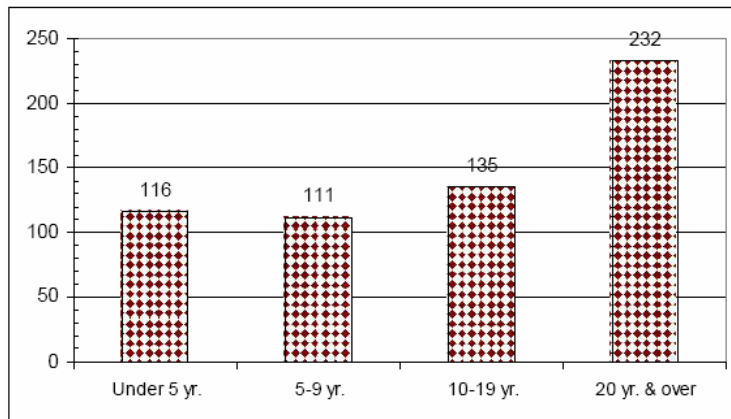
## Citizen Survey Summary

The Citizen Survey collected input from a random sample of property owners living in Henderson County. Samples were derived from the Henderson County Tax Assessor’s database of property owners. The Citizen Survey was designed and executed by Insight Research, Inc., of Greensboro, NC, in cooperation with the CCP Advisory Committee and Henderson County Staff. The document may be viewed in full at <http://www.hendersoncountync.org/planning/ccp>. A hard copy of the full Citizen Survey Report is available in the offices of the Henderson County Planning Department.

Surveys were mailed to 2,029 randomly selected property owners in Henderson County. A total of 596 surveys were returned, for a 29% response rate.

Municipal vs. County Resident		
	Count	Percent of Responses
Incorporated	210	35.23
Unincorporated	386	64.77
<b>Total Responses</b>	<b>596</b>	<b>100.00</b>

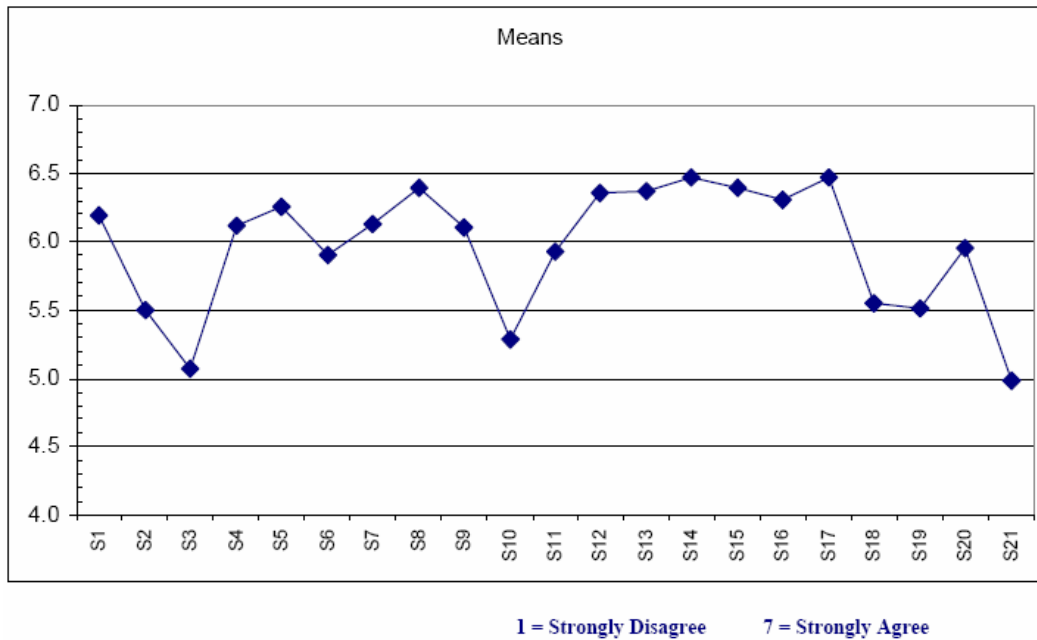
### Residents’ Length of Time in County



## General Questions and Mean Responses

	<b>Statement</b> 1 = Strongly Disagree 7 = Strongly Agree	<b>Valid N</b> (Number)	<b>Mean</b> (Average)	<b>Median</b> (Middlemost)	<b>St. Dev.</b> (Variability)
S1	In general, the County should have policies and regulations that help to manage growth and development.	589	6.19	7.0	1.40
S2	Commercial development in <i>rural</i> areas should be small-scale.	548	5.50	6.0	1.72
S3	Commercial development in <i>rural</i> areas should be concentrated <b>near road intersections.</b>	543	<b>5.07</b>	5.0	1.90
S4	<i>Agricultural</i> areas should be protected from extensive commercial development.	587	6.12	7.0	1.51
S5	Preserving <i>open space</i> is important to maintaining a high quality of life.	584	6.26	7.0	1.35
S6	Key sites for <i>future industry</i> should be identified and protected.	575	5.91	7.0	1.42
S7	Growth should be <i>directed</i> to appropriate areas through the <i>strategic placement</i> of services (e.g., schools, sewer, water, etc.).	577	6.14	7.0	1.31
S8	Growth and development should be directed away from flood-prone areas.	588	<b>6.39</b>	7.0	1.15
S9	Large-scale development (factories, shopping centers, etc.) should be located where sewer, water and other services already exist or can be easily provided in the future.	582	6.10	7.0	1.39
S10	There is a need for more affordable housing in Henderson County.	574	<b>5.29</b>	6.0	1.84
S11	I am concerned about the quality of the natural environment in Henderson Co.	586	5.93	7.0	1.48
S12	Growth and development should be environmentally responsible.	591	<b>6.35</b>	7.0	1.13
S13	A clean, safe, natural environment is good for economic growth & development.	585	<b>6.37</b>	7.0	1.05
S14	An attractive, pleasing community is good for economic growth & development.	588	<b>6.47</b>	7.0	0.94
S15	Development should be visually attractive.	586	<b>6.40</b>	7.0	0.98
S16	Development should respect cultural and historic sites.	588	<b>6.31</b>	7.0	1.18
S17	Development should respect the rural and scenic qualities of the county.	588	<b>6.47</b>	7.0	1.00
S18	I am concerned about the stability of the economy in Henderson County.	576	5.55	6.0	1.58
S19	The County should invest in the recruitment and retention of businesses.	579	5.51	6.0	1.66
S20	The County's economic development policies should support agriculture.	591	5.95	6.0	1.38
S21	The County's economic development policies should support tourism.	586	<b>4.98</b>	5.0	1.90

### Distribution of General Question Means

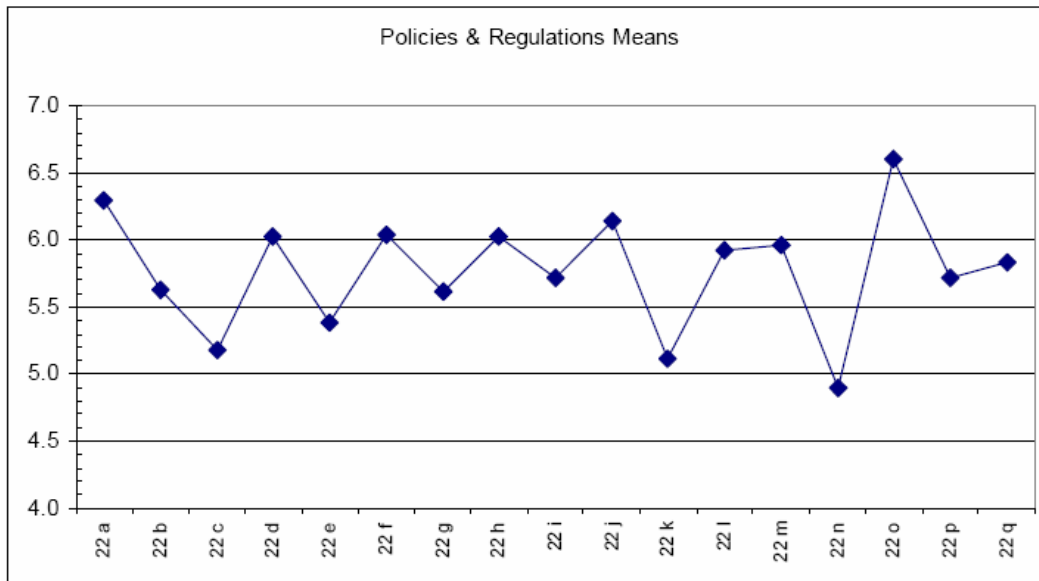


### Policy / Regulation Questions and Mean Responses

(County Policies and Regulations Should Address the Following...)

	Statement 1 = Not at All Important    7 = Extremely Important	Valid N (Number)	Mean (Average)	Median (Middle)	Std. Dev. (Variability)
a	Protect air quality	592	<b>6.30</b>	7.0	1.17
b	Set aside key industrial sites	575	5.63	6.0	1.51
c	Establish architectural standards for structures	584	5.18	5.0	1.80
d	Protect open space	577	6.03	7.0	1.43
e	Limit development in areas not served by sewer & water	579	5.39	6.0	1.82
f	Protect farmland	585	6.04	7.0	1.40
g	Limit development on steep slopes	579	5.61	6.0	1.74
h	Protect views along scenic roadways	582	6.03	7.0	1.35
i	Limit the density of development in rural areas	580	5.72	6.0	1.55
j	Prevent development in flood-prone areas	572	6.14	7.0	1.35
k	Promote the construction of affordable housing in each community	578	<b>5.12</b>	5.0	1.89
l	Provide direction for the extension of sewer and water services	579	5.92	6.0	1.36
m	Protect cultural and historic sites	585	5.96	6.0	1.37
n	Regulate outdoor lighting	585	<b>4.90</b>	5.0	1.83
o	Protect water quality	591	<b>6.60</b>	7.0	0.88
p	Regulate signs	583	5.71	6.0	1.61
q	Require that dilapidated housing be repaired or removed	589	5.83	7.0	1.63

**Distribution of Policy / Regulation Means**

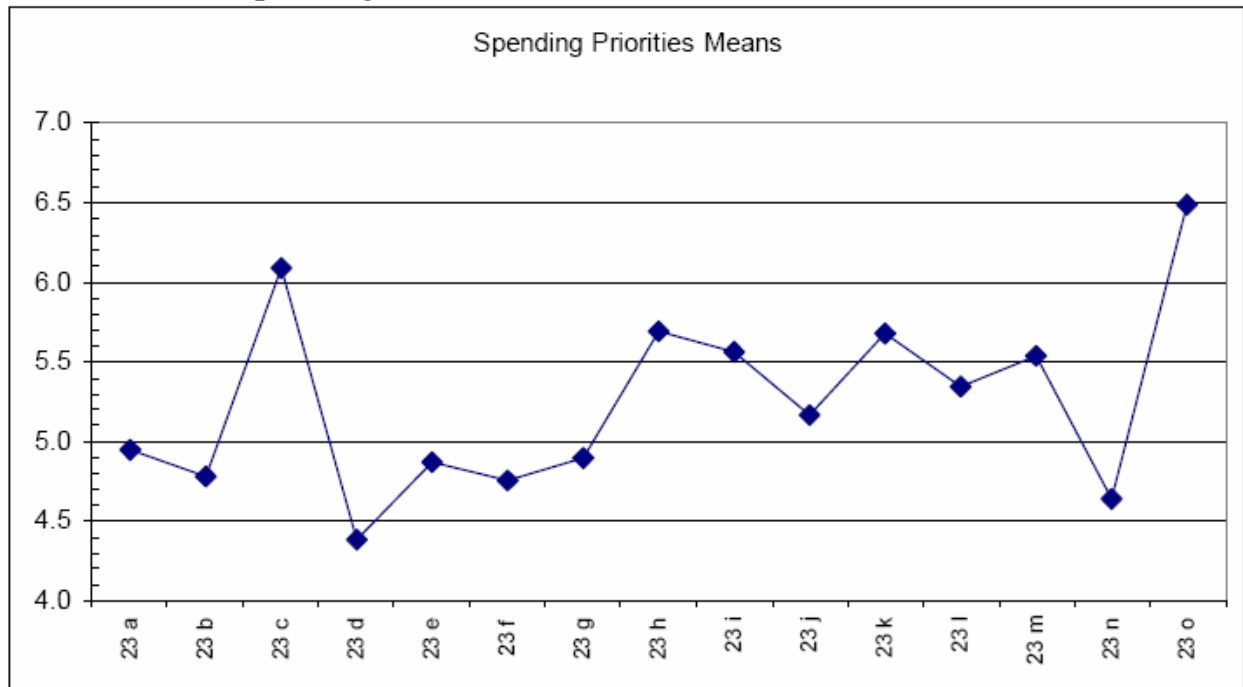


**Spending Priorities Questions & Mean Responses**

(County should expend tax dollars to address the following issues...)

Statement 1 = Not at All Important 7 = Extremely Important		Valid N (Number)	Mean (Average)	Median (Middle)	Std. Dev. (Variability)
a.	Development of industrial and business sites	572	4.95	5.0	1.74
b.	Additional recreation programs and facilities	576	4.78	5.0	1.66
c.	Air quality protection	579	<b>6.08</b>	7.0	1.37
d.	Programs to encourage tourism	565	<b>4.38</b>	5.0	1.95
e.	Construction of a bypass around Hendersonville	568	4.87	5.0	2.14
f.	Construct bike / walking trails (greenways)	571	4.76	5.0	1.93
g.	Development of affordable housing	571	4.90	5.0	1.94
h.	Farmland protection	584	5.69	6.0	1.57
i.	Programs to support the economic viability of agriculture	577	5.56	6.0	1.57
j.	Financial incentives to recruit and retain business and industry	572	5.16	5.0	1.78
k.	Open space protection	575	5.69	6.0	1.55
l.	Programs to support small businesses	571	5.34	6.0	1.55
m.	Protect cultural and historic sites	581	5.54	6.0	1.59
n.	Support a public transportation system	579	<b>4.65</b>	5.0	1.92
o.	Water quality protection	587	<b>6.49</b>	7.0	0.99

**Distribution of Spending Priorities Means**



In general terms, the Survey indicated higher levels of agreement that the rural / scenic qualities of the county should be protected, that development should be visually attractive, that development should steer away from flood-prone areas, and that the County should protect the natural environment. The Survey indicated lower levels of agreement that the County should engage in the support of tourism or economic development activities, in the provision of affordable housing, or the restriction of commercial development in rural areas.

The Survey indicated higher levels of agreement that County regulations and policies should protect water and air quality, prevent floodplain development, and protect farmland. There was a low level of agreement that County regulations and policies should provide for affordable housing, that the County should regulate aesthetics through lighting and architectural standards, or that development should be limited in areas not served by utilities.

The Survey indicated higher levels of agreement that the County should contribute revenues to the protection of air and water quality, and to farmland and open space protection. There was a low level of agreement that the County should contribute revenues to promote tourism, to support public transportation system, or to develop recreational and greenways facilities.

## Community Meeting Summary

A total of 14 Community Meetings were held, one in each fire district (or grouping thereof), plus a makeup meeting. Please see Appendix II: Public Input, *Community Meeting Summary*, *Community Meeting Area Map*, *Community Meeting Schedule*. Also, a separately bound document, *A Summary of Phase III, Henderson County Comprehensive Plan*, and the *Compilation of Citizen Input from Community Meetings*, is available for review in the offices of the Henderson County Planning Department.

The Community Meetings were open to the general public and gathered written and verbal input that focused upon issues facing the communities in which they were held. The Community Meeting process was designed and executed by the Staff of the Dispute Settlement Center of Henderson County (“DSC”) in cooperation with the CCP Advisory Committee and Henderson County Staff. A summary of the community meeting responses is given below. To review verbatim transcriptions please see *Summary of Phase III, Henderson County Comprehensive Plan*, and *Compilation of Citizen Input from Community Meetings*.

The Community Meetings were advertised through an intensive public relations campaign that included advertisements in local newspapers and on local radio stations, the distribution of flyers in each community, press releases, and other outlets. As many as 564 persons attended the Community Meetings countywide, with 516 persons officially recorded via demographic cards distributed at each meeting.

The following figure summarizes demographic characteristics of those individuals who attended and provided input at each Community Meeting.

Countywide Attendance	Age of Participants					
	0-17	18-35	36-50	51-65	>65	N/A
	1%	4%	16%	41%	36%	2%

Countywide Responses	Home Ownership Status		
	Own	Rent	No Response
	87%	3%	10%

Countywide Responses	Years Attendees Have Resided in Henderson County					
	0-9	10-29	30-49	50-69	70-89	90+
	39%	27%	16%	14%	3%	0.19%

Countywide Responses	Residential Status in Fire District		
	No Response	Full Time	Part Time
	35%	62%	3%

Countywide Responses	Municipal Residence Status					
	Flat Rock	Fletcher	Hendersonville	Laurel Park	Mills River	County
	3%	1%	3%	1%	7%	86%

Countywide Responses	Business Owner?	
	Yes	No
	12%	88%

Community Meeting responses were both written and verbal. Both sets of comments were typed and sorted into major groupings of subject matter or “Primary Categories.” The following table details how all comments were sorted and indicates the subjects of most interest to attendees.

Public Comment Category		
Primary Category	Total Comments	Percentage All Comments
Manage Growth	3772	32.25%
Transportation	2013	17.21%
Environment	891	7.62%
Recreation	817	6.99%
Quality of Life	642	5.49%
Emergency Services	537	4.59%
Services, Commercial	451	3.86%
Sewer / Water	327	2.80%
Schools	316	2.70%
Aesthetics	285	2.44%
Governance	247	2.11%
Economy	236	2.02%
Waste Management	234	2.00%
Libraries	179	1.53%
Telecommunications / Electrical	125	1.07%
Animal Control	119	1.02%
Services, Young and Old	99	0.85%
Meeting Facility	90	0.77%
Medical	84	0.72%
Location	65	0.56%
Diversity	63	0.54%
Churches	39	0.33%
Noise	15	0.13%
Social Services	15	0.13%
News Paper	14	0.12%
Natural Gas	12	0.10%

Public Comment Category		
General Electric	9	0.08%
Total Comments	11,696	

After being sorted into Primary Categories, comments were then further grouped into Summary Comments which reflect the general sentiment of all comments in the category. Figure PI.12 details the summary comments. As with the preceding figure, this figure is sorted by descending order of priority of the Primary Category.

**Public comment Summary**

Primary Category	Summary Comment	Summary Comment as % All Comments
Manage Growth	Value agriculture/ rural landscape; desire protection / preservation / enhancement.	8.23%
Manage Growth	Desire growth, but approve of current measures to manage and regulate growth, including zoning; want additional measures to manage growth; desire consistency and stability in zoning.	5.98%
Manage Growth	Commercial: regulate placement of commercial land uses; protect residential communities from the negative impacts of commercial land uses.	5.77%
Manage Growth	Industrial: regulate placement of industrial land uses; protect residential communities from the negative impacts of industrial land uses.	3.61%
Manage Growth	Property Rights: Oppose zoning and other burdensome regulations that impose the will of others at the expense of private property rights.	2.53%
Manage Growth	Housing: Oppose dense housing	1.44%
Manage Growth	Housing: Minimize manufactured housing, and / or improve the appearance thereof.	1.42%
Manage Growth	Regulate Housing Growth	0.91%
Manage Growth	Residential: Residential communities should be protected from encroachment from incompatible uses.	0.74%
Manage Growth	Housing: Need affordable housing	0.69%
Manage Growth	Floodplain: Protect the floodplain and prevent development therein via regulations.	0.56%
Manage Growth	Enforcement: Desire more consist and proactive building inspections and zoning code enforcement.	0.15%
Manage Growth	Housing: Oppose affordable housing	0.12%
Manage Growth	Churches: Oppose development of more; churches in need of regulation.	0.06%
Manage Growth	Housing: Favor density	0.05%
Transportation	Suggested improvements to specific roads	5.85%
Transportation	Current road system needs repairs and general improvements. Gravel roads need to be paved, and dangerously winding roads should be straightened and widened, potholes filled, and etc. Multiple lanes should be added where congestion conditions warrant such.	2.73%



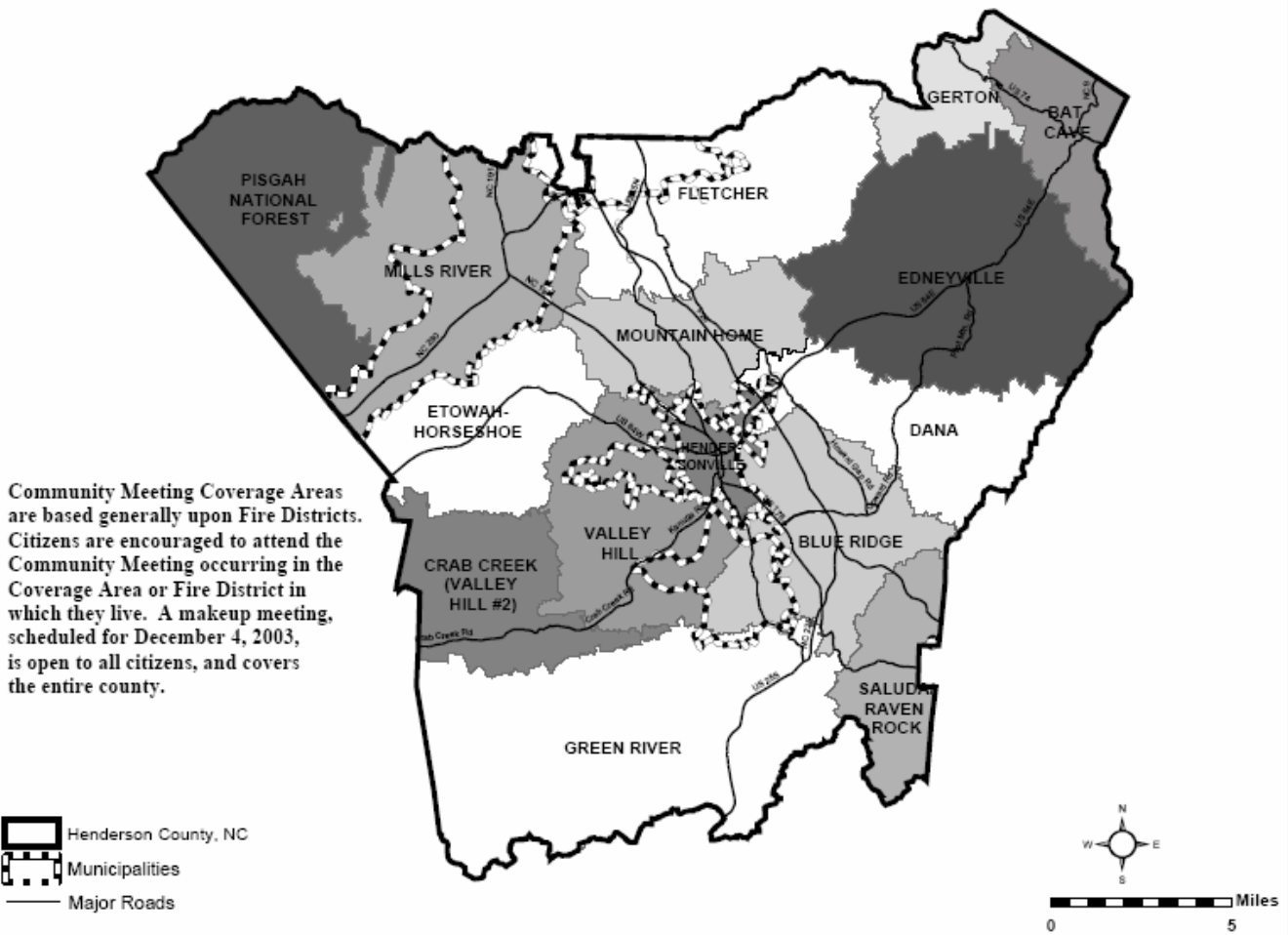
Primary Category	Summary Comment	Summary Comment as % All Comments
Transportation	Public Transportation: Support current system and desire to see it maintained and expanded.	2.21%
Transportation	Traffic congestion in Henderson County is steadily worsening, with negative consequences for quality of life, economic development, and etc. Areas of higher traffic congestion and urban density need additional lanes, turning lanes, improved intersections, slow lanes, and etc., to improve traffic flow and capacity.	1.98%
Transportation	The county has a quality, well-designed road system that is well maintained. Traffic congestion is pleasantly low.	1.45%
Transportation	Better traffic safety / speed limit enforcement is needed. Heavy commercial truck traffic is causing problems on certain roads; pose a safety hazard that should be addressed.	1.35%
Transportation	Opposed to additional road construction, widening or multi-lane roads.	0.57%
Transportation	Mixed desire for both more and fewer traffic lights. Underlying both is an agreement that traffic signals need improvement in terms of spacing, location, timing, synchronization, etc. Certain dangerous intersections require signalization.	0.46%
Transportation	Public Transportation: Opposed to; not needed; waste of public funds, do not want near homes.	0.27%
Transportation	A bypass around the Hendersonville urban area is needed.	0.20%
Transportation	The county is in need of improved, coordinated transportation planning that is actively implemented.	0.15%
Environment	Value / favor protection mountains / scenic views / natural beauty	3.08%
Environment	Value / favor protection water quality, wetlands	1.95%
Environment	Value / favor protection trees / vegetation / wildlife / nature	1.66%
Environment	Value / favor protection air quality	0.58%
Environment	Value local climate / weather	0.23%
Environment	Manage the spread invasive exotic species	0.07%
Environment	Oppose regulation.	0.05%
Recreation	Citizens value existing parks and recreation opportunities and facilities, but desire more accessible facilities, particularly of facilities, throughout the county.	4.19%
Recreation	Bike / Pedestrian: Support greenways / trails / bike and walk paths for recreation and for transportation.	2.11%
Recreation	Desire for enhanced youth activities and programs.	0.36%
Recreation	Golf Courses valued / needed	0.15%
Recreation	Bike / Pedestrian: Oppose bike / walk paths (greenways) for rec. / transportation.	0.09%
Recreation	Value ability to hunt and fish	0.08%
Quality of Life	County has high quality of life / sense of place; value high quality of life / historic / heritage / family attributes; desire preservation of such.	5.49%
Emergency Services	Emergency Services – Value current quality / responsiveness / geog. Distribution, and want to see current level of service maintained.	2.48%

Primary Category	Summary Comment	Summary Comment as % All Comments
Emergency Services	Emergency Services – Suggested improvements	2.11%
Services, Commercial	Services, general - Existing commercial services are valued needed in convenient, accessible areas.	1.88%
Services, Commercial	Services, general - Value / view positively existing post offices. All communities very loyal to, and want to maintain, their post offices. No support for consolidation of post offices.	1.27%
Services, Commercial	Services, general - Appreciate the diverse blend of conveniently located land uses and services available throughout the county	0.71%
Sewer / Water	Current services valued / appreciated. Urbanizing areas currently without water and sewer need such service. Sewer / water are necessary for continued growth and development.	2.22%
Sewer / Water	Respondents opposed to the extension of sewer and water services into their area. This stems primarily from a desire to avoid rapid development, as well as concern over eminent domain and cost of fees.	0.38%
Sewer / Water	Complaints regarding quality of existing service. Most comments referenced concerns regarding the quality of the infrastructure and service of the private water supply system servicing parts of Etowah. Other comments pertained to concerns regarding the presence chlorine in public water systems.	0.20%
Schools	Schools – Value / view positively existing facilities and programs.	1.46%
Schools	Schools – Need specific improvements: Traffic patterns, class size, facilities improvements, expansion of training for adults, etc.	1.24%
Aesthetics	Concern regarding the negative impact of signs and lighting on the character of the community, and support for enhanced rules controlling signage and lighting.	0.47%
Aesthetics	Abandoned / dilapidated site built and manufactured homes, commercial structures, and other structures are a detriment to the community; that currently developed sites should be targeted for redevelopment; and that the County should develop measures to address the situation.	0.42%
Aesthetics	Trashy, junky, unkempt, neglected properties are an eyesore, detract from property values, and are a detriment to the community that should be further addressed by local government regulations.	0.35%
Aesthetics	Concern regarding junked / abandoned vehicles, on private property and otherwise. Favor enhanced regulations and programs to address.	0.34%
Aesthetics	Concern that junkyards are generally a detriment to the community; that the County’s junkyard ordinance and related ordinances and codes are inadequate; and that such are not being properly enforced as written. Support enhanced measures to address the issue.	0.32%
Aesthetics	Praise for high quality architecture and site design of residential, commercial and other development, and hope that standards requiring better architecture and site design will be imposed upon new development.	0.32%
Aesthetics	Opposition to the negative visual effects of communication towers.	0.11%

Primary Category	Summary Comment	Summary Comment as % All Comments
Aesthetics	Surface utilities (telephone, power, etc.) should be replaced by underground utilities.	0.11%
Governance	Citizens appreciate low taxes, and desire sound fiscal management.	0.95%
Governance	Need more cooperation between local governments and their constituent agencies, including coordinated planning, and the consolidation of many services.	0.36%
Governance	Municipal: Opposition to municipal incorporation / annexation / ETJ extension / other incursions by municipalities into county-governed areas.	0.26%
Governance	Citizens value being consulted by the government, and appreciate and desire more opportunities for involvement. Citizens desire more positive and accessible discussions regarding public issues.	0.16%
Governance	Remote sections of the county feel that County Government does not offer adequate attention to their issues and needs.	0.16%
Governance	Citizens feel that local governments lack leadership and vision, and desire consistent, harmonious, effective governance.	0.15%
Governance	Municipal: Value municipal governments and favor further expansion / incorporations.	0.05%
Governance	Governance -Citizens desire a smaller government.	0.02%
Governance	Concern about taxes being too low to provide needed services.	0.01%
Economy	Need economic growth / Economic Development / development for jobs	1.60%
Economy	Downtown is diverse, vibrant and attractive. These qualities should be preserved and enhanced. Need additional parking.	0.42%
Waste Management	Too much litter / trash on properties, roadsides, etc. Need better litter / solid waste enforcement.	0.58%
Waste Management	Citizens expressed concern regarding the presence of illegal waste, junk and litter dumping along roadways and on private properties, and the burning of refuse. Citizens' support enhanced measures to address those issues.	0.44%
Waste Management	Want Garbage Pickup Services / Remote Drop Sites	0.43%
Waste Management	Value Recycling / Seek Improvements	0.42%
Waste Management	Citizens are concerned about the future of the County's landfill.	0.07%
Waste Management	Request rules against burning trash and leaves.	0.06%
Libraries	Libraries – All communities value existing libraries, or seek new / expanded facilities.	0.94%
Libraries	Libraries – Need new / improved existing libraries in all sections of the county.	0.59%
Telecommunications / Electrical	Desire better internet service.	0.42%
Telecommunications / Electrical	Desire cable television services (or improvements thereto).	0.27%
Telecommunications / Electrical	Suggest improvements to electrical service. Minimize failures, etc.	0.21%

Primary Category	Summary Comment	Summary Comment as % All Comments
Telecommunications / Electrical	Desire better telephone service.	0.10%
Telecommunications / Electrical	Desire better cell phone service	0.08%
Animal Control	Services, general - Animal Control: Favor regulations / programs to control dogs, etc.	1.02%
Services, Young and Old	Services for young and old - Services for seniors / elderly services / senior service	0.79%
Services, Young and Old	Services for young and old - Need more childcare services in remote portions of the county and in neighborhoods.	0.06%
Meeting Facility	Value existing Community Clubs / Community Centers / Public Gathering Places, or desire more.	0.47%
Meeting Facility	Need Large Gathering Place	0.19%
Meeting Facility	Cultural / Arts Facilities: value those existing, but desire for larger, more accessible, more utilized facility.	0.11%
Medical	Medical - Value existing medical and health care services, and hope for continued improvements in access, cost, and range of services.	0.72%
Location	Location - Value location in relationship to other cities and local / regional amenities.	0.35%
Location	Location - Value proximity to publicly accessible open spaces / natural areas	0.21%
Diversity	Diversity - Disdain for, and an unwillingness to accommodate the needs of, non-natives, Latinos, and other minorities and special needs populations.	0.42%
Diversity	Diversity - Expression of a welcoming attitude towards, and a willingness to respect the needs of, non-natives, Latinos, and other minorities and special needs populations. More generally, hope for more positive relationship between different groups within the county.	0.12%
Churches	Services, general - Churches: A valued / needed presence in community.	0.33%
Noise	Noise – favor controlling	0.13%
Social Services	Social Services - Citizens value the services provided by religious institutions, social services agencies and non-profit institutions, and hope to see more support for and expansion of.	0.13%
News Paper	Services, general - Desire better newspaper service.	0.12%
Natural Gas	Services, general - Appreciation of existing natural gas infrastructure, and desire to see such infrastructure extended.	0.10%
GE	G.E. - Concern over the fate of the aging G.E. facility, and suggested that it be properly maintained, and then torn down if ever it should close.	0.08%

### COMMUNITY MEETING COVERAGE AREAS



## **COUNTY COMPREHENSIVE PLAN PUBLIC MEETING DATES AND LOCATIONS**

All meetings are held on Thursday evenings from 6:45 PM until 9:00 PM. Please arrive at 6:45 to enjoy refreshments and to review information about each Fire District before the presentation begins at 7:00 PM.

Fire District	Date	Meeting Location
1. Gerton / Bat Cave (combined meeting)	Aug. 28	Upper Hickory Nut Gorge Community Club
2. Raven Rock	Sept. 4	(New) Saluda Fire Station
3. Crab Creek / Valley Hill #2	Sept. 11	Valley Hill Fire Department (Main Station)
4. Green River	Sept. 18	Tuxedo Extended Day School
5. Dana	Sept. 25	Dana Elementary School
6. Mills River	Oct 2	Mills River Elementary School
7. Edneyville	Oct 9	NC Justice Academy
8. Etowah/Horse Shoe	Oct. 16	Etowah Elementary School
9. Fletcher	Oct. 23	Fletcher Elementary School
10. Mountain Home	Oct. 30	Rugby Middle School
11. Valley Hill	Nov.6	Valley Hill Fire Department (Main Station)
12. Blue Ridge	Nov. 13	Flat Rock Middle School
13. Hendersonville	Nov. 20	Whitmire Building
14. Make-Up Meeting	Dec. 4*	Henderson County Public Library (Main Branch) Auditorium

## ***Latino Community Meeting Summary***

Public input was gathered from Henderson County's Latino community as part of the process of developing the *2020 Henderson County Comprehensive Plan (CCP)*. This was necessary because the Latino Community represents more than 5% of the county's population and because due to language and other barriers, that population was not being represented in the larger CCP Community Meeting process.

The Latino Community Meeting was held at the offices of El Centro and was conducted through simultaneous English – Spanish interpretation. Thirty-three key leaders of Henderson County's Latino community were identified and invited to attend the meeting.

The following is a summary of comments received at the Latino Community Meeting. (Numbers in parentheses indicate multiple responses).

### **1. What are the two or three best things about Henderson County? Why do you choose Henderson County as a place to live?**

- Mountains (4)
- Four distinct seasons (1)
- Opportunities available
- Quality Police system in the County
- Jobs
- Openness/Zoning (houses not so close) (1)
- Park Facilities/Open Spaces such as Jackson Park
- Opportunities to buy homes and property (1)
- Work Opportunities (1)
- Tranquility/Peace (4)
- Safety (2)
- Friendly people (1)
- Open areas
- Challenges for personal development (2)
- Family already here (1)

- The environment (1)
- Increasing Latino Population (more need to serve with the church) (1)
- Not a big city (without city problems) (1)
- Good place to raise children (1)
- Quiet place (1)
- Diverse community (1)
- Green areas (1)
- Husband moved here (and all other reasons) (1)
- Educational opportunities (1)
- No tornados (location)
- Well established services (library, police, help for children but
- Needs some work re: relations/training for staff re: dealing with people in the Latino community

**2. Identify two or three major problems with Henderson County that you would like to see county Government address. What needs to happen to make Henderson County a better place to live?**

- Gap in communications between County Government and organizations representing Latino community
- Need for better communications between African-American community and Latino community
- More for little kids/young people to do
- Opportunities for parents to learn how to prevent gangs
- Share information between county/cities/community. Have meetings so “we” know what’s going on and can speak freely
- Ways to express Latino culture to Anglos
- Adult education (how systems work; for example, problems with housing/mobile home parks)
- Criminal justice “out of hand”, police need oversight by citizens ... citizens review board.
- Need for interpreters with law enforcement



- Need for interpreters in general
- More outreach to community as a whole
- Need for community and others to understand each other
- Hiring diversity (911 for example)
- Accessible financing for homes for Hispanics (lower rates for example)
- Where do people complain re: housing conditions
- High rent and poor conditions
- Part-time residents-complaints take too long to resolve
- County and El Centro should partner
- Out in county few ways to walk, bike
- More street lighting
- Imbalance in code enforcement –housing, police, etc.
- Flooding of US25, US 176, Jackson Park (storm water system drainage problems)
- Growth ahead of planning-new developments with schools, other services, traffic
- More interpreters needed at hospitals (Park Ridge and Pardee)
- Roads don't have enough sidewalks and are dangerous
- Repaint lines on roads and traffic bumps
- Need Spanish speaking EMS staff
- Federal agencies receiving funding required to have meaningful way to communicate (who enforces this?)
- BRCC has CNN program
- More support in schools –tutors, for example to help suspended students
- Students with low grades cannot play sports or sometimes continue in school. Help students stay in school/maintain self-esteem
- Better access to health/medical services (1) (dentist, women's health in addition to than birth control)
- Better housing opportunity to purchase homes/access to housing
- Inform community about not littering (signs in Spanish)
- County/police should enforce littering rules

- Improve translations (signs/other information), make signs common to people from different areas languages))
- Loss of safety as community grows, loitering, drugs entering county
- Family recreation opportunities needed more than parks/ movies, music, etc.
- Feel less safe-need to lock doors now
- Around 7th Ave area police asking people waiting for jobs for the day to leave the area. They are here legally-maybe build a legal waiting area/centralized
- Drug dealing/prostitution around 7th Ave. area getting out of control-nothing stopping it.
- More opportunities to share culture beyond El Centro
- Need to improve public transportation system. Study where people need to go/schedule (ends too early for example)/better publicize stop locations/need shelters
- Improve communications with police
- Improve communications from people from different countries
- More activities after school with lower fees

**3. / 4. What are the most pressing issues/greatest needs facing Henderson County's Latino population? Considering the specific needs of Henderson County's Latino community, in what ways can Henderson County Government and other organizations best support the growing Latino community? In particular, what services need improvement?**

- Many people play soccer and fields need better maintenance. Should not be so susceptible to flooding
- Hire more translators and educate staff on how to deal with clients

**Other Comments**

- Questions from participant: Latino community wants to invest in the County. What can County do to facilitate financing, taxes, etc.?
- Help Latino community understand how system works so they can participate, for example, in politics.

- More interaction between County and community
- Customer service
- All communities need to work to understand each other

### *Agricultural Community Meeting Summary*

Henderson County's Agricultural Community was specifically targeted for input as part of the process of developing the *2020 Henderson County Comprehensive Plan*.

An open-ended questionnaire was provided to farmers and to other agricultural professionals, and farmers and agricultural support organization representatives were invited to three agriculture – specific public input sessions. Included at these meetings were representatives of organizations such as the Henderson County Agricultural Advisory Committee; the Henderson County Soil and Water Conservation Board; The Henderson County Cooperative Extension Advisory Board; federal, state and local non-profit and governmental agency representatives; and approximately 40 farmers.

The following is a summary of the input received.

Farmers and other meeting attendees agreed that the County's agricultural community is threatened. They predicted that perhaps as much as half of the current stock of agricultural land may be consumed by development by the year 2020, and that the number of farms and farmers would also continue to decline. A number of key threats to Henderson County's agriculture were identified:

- The County's agricultural land base is threatened.
  - Pressure from development, coupled with rising property values, lowered profitability, and the need for retirement income causes farmers to consider selling property.
  - Estate transfers or development results in progressively smaller and geographically scattered agricultural land under numerous ownerships.
  - Recent changes in the County's application of Present Use Valuation are making it more difficult to cover taxes.
  - Local governments are not managing growth, protecting farmland, or steering growth away from farmland.

- Development adjacent to farms is causing conflicts between new residents and farmers. New residents see farmland as beautiful views and do not properly understand the realities of living near a farm.
- Farmers are finding it difficult to profitably produce, market, and sell products.
  - Lack of time and knowledge necessary to conduct effective marketing.
  - Lack of knowledge regarding new crops, techniques.
  - Reduction in the number of brokers / outlets through which to sell products.
  - Lack of interest or knowledge on the part of local consumers regarding locally produced products coupled with increasing competition from foreign producers.
  - Lack of interest among local retailers in carrying local products.
  - Agriculture is a capital-intensive enterprise.
  - Increased costs imposed by regulations.
- New farmers are not entering the profession.
  - The average age of the County's farmers is increasing, coupled with the difficulty of entering agriculture on the part of new and young farmers.
  - High cost of land for new or expanding farmers.
  - Heirs are simply not interested in farming. Or, although they may want to farm, they see no profitability in it.
  - Transferring estates to future farmers is complicated by multiple heirs with differing objectives.

A number of key opportunities were identified:

- Farmers want to farm. They just need proper support.
- Consumers are demanding higher quality products, including organics, and specialty crops.
- Population growth, while introducing conflicts, provides a source of local customers (given adequate marketing).
- Agriculture in Henderson County is shifting in response to the growth in demand for horticultural products (trees, shrubs, sod, etc.).

- Henderson County's soils and climate are ideally suited for many of the horticultural and specialty crops for which there is growing demand.

A number of specific measures to assist agriculture were suggested and received considerable agreement:

- Give agriculture the same attention as industrial development with regard to economic development programs and incentives.
- Explore other tax incentives for farmers such as breaks for equipment and other forms of capital investment.
- Develop a County-owned and operated retail facility that is reserved strictly for locally produced agricultural and craft products and producers, which is strategically located to tap I-26 traffic.
- Develop a map, website, and corresponding marketing effort that details the location, products, and contact information of local farms and associated agriculture-related enterprises and make such available to local consumers and tourists alike.
- Minimize land use and other regulations that hamper the production or sale of products.
- Farmers are willing to consider conservation easements, trading of development rights, and other incentives to protect farmland. However, those mechanisms must adequately compensate for development values and must not hamper the agricultural functionality of the land.
- Provide extensive marketing assistance and assistance in identifying new crops, and grant writing. Maintain and broaden any existing programs that already do this and identify an individual or organization charged with this task. Profitability is the best farmland preservation tool: focus energies on helping farmers transition with the markets, rather than regulating them.
- Limit development by requiring impact fees of developers. Make development pay to protect the rural scenery that attracts it. Make sure that people moving into agricultural areas are aware of the realities of life there so as to minimize future conflicts.
- Make sure that local governments and the public at large are aware of the importance of agriculture to the County. Understand that the value of agriculture is not just economic.

- Reverse recent changes in the Present Use Valuation program.
- Encourage the County, and other governments, and the public at large to put some money and resources behind these and other suggestions.

***Planning For 2002 Recreation Forum  
February 1992***

<b>Results of Planning for 2002 Forum Monday, February 24, 1992, The Hangar</b>	
Sixty-three persons voting, 1263 total votes cast	
<b>Facilities</b>	<b>Number of Votes</b>
1. Multi-Purpose Gymnasium	201
2. Greenway/Bike/Walking Trails	155
3. Sports Field Complex	149
4. Community Arts Center	141
5. Indoor Swimming Pool	118
6. Land Acquisition	115
7. Community Parks	96
8. Tennis Courts	66
9. Soccer/Football Fields	42
10. Amphitheater	32
11. River Access/Parks	27
12. Softball Baseball/Fields	24
13. Municipal Golf Course	22
14. Picnic Areas	7
15. Water Park	4
16. Ropes Course	0
Other items common to group results but not assessed as facilities include: Merger of County and City Parks and Recreation Departments Subdivision Ordinance mandating land or fees be set aside for park development or acquisition Parks Maintenance as a division of Parks and Recreation Year round and youth volleyball Admission fees allowable to be charged at parks for specific programs or events	

## *Participants In The "Planning For 2002" Program*

<b>Lifetime Sports</b>	<b>Young Adults</b>	<b>Community</b>
Gordon Reynolds Harry Lockaby Kent Teeter Flaughn Lamb Hayes Albea Marc Gooden Jimmie Whitmire Lee Sigmon Frank Schrier Jane Wood	Sara Kimmey Kristen Terebelski Ginger Poston Tammi Skipper Jason Sweeney Leslie Rice John Whitmire Greg Lyda Deryll Saxon Skipper Juhasz	Gary Rhodes Henrietta Sain Joseph Pace Anne McKinney Malvern West Bill More Kevin Parkhill Terri Maybin Betty Edwards Steve Pennock
<b>Outdoor/Environment</b>	<b>Youth Sports</b>	<b>Retiree</b>
David Milpass Gary Eblen Anne Ulinski Lela McBride Ken Weitzen Paul Williams William Wallace Ken Hulick Harrison Metzger Ken Woodward	Mike Gilmore Ronnie Pressley Jim Vance Mike Orr George Cox Dr. Ron Moffitt David Adams Eddie Merrill Sue Moon Ronnie Pepper	Jim Lane Jim Lynch Ray Jones Alonzo Anders Bette Hoffman Frank Fitzsimmons, Jr. Glenn Marlow Alice D'Aprix Dick Webber Sharles Barr
<b>Business Industry</b>	<b>Adult Sports</b>	<b>Cultural Arts</b>
Ray Cantrell John Shepherd Tim Purdy Danny Dowell Jeff Miller Steve Wells Hardy Caldwell Kim Cooley Ken Feagin Melody Jenkins	Darla Williams Larry Hardin Dee Costner Steve Briggs Duke Angier Roy Huntley Jim Peeler Lynn Johnson Vernon Hopkins Baron Jackson	Meg Penney Frank Byrd Jim Stokes Wendi Williams Wendell Bachman Pat Shepherd Mike Hall John Dickson Jan Shefter Rick McMinn
	<b>Civic/Organization</b>	
	Renee Kumor Noel Watts Charles McCombs Mac Drake Matt Matteson Mae Alexander Shawn Lee Sheryl Tuller Steve Norwood Bill Barnwell	

**PAGE LEFT INTENTIONALLY BLANK**