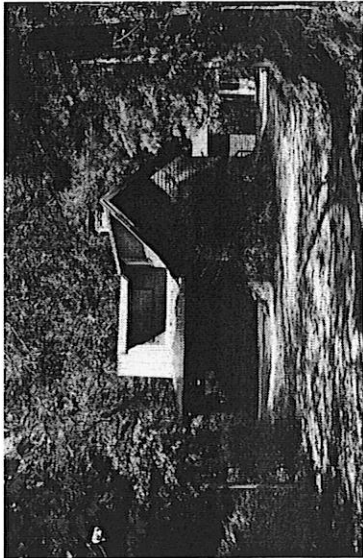


Henderson County HNO868
Flat Rock
276 Lake Falls Road
CAMP TON-A-WANDAH

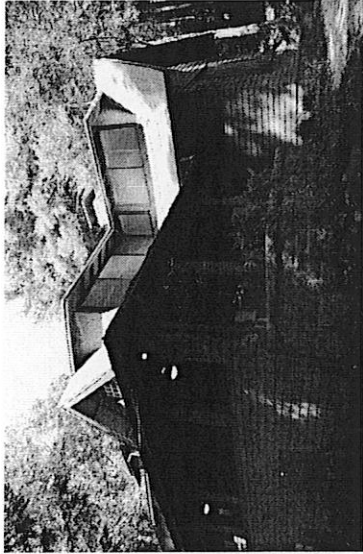
SS # HN 868

HN 868 Camp Ton-A-Wandah, 276 Lake Falls Rd, Flat Rock, NC
C. Griffith/Acme Preservation Services, September 2009



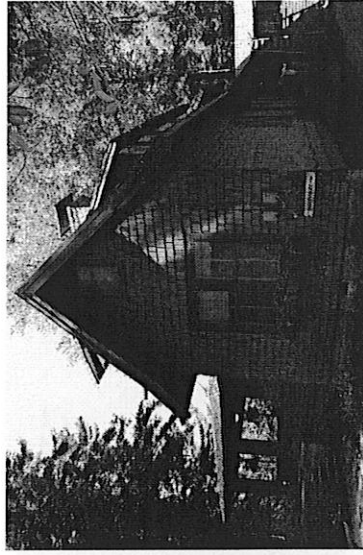
Elzie

HN868_FlatRock_CampTon-A-Wandah_09-09_cg_01.jpg



Elzie

HN868_FlatRock_CampTon-A-Wandah_09-09_cg_02.jpg



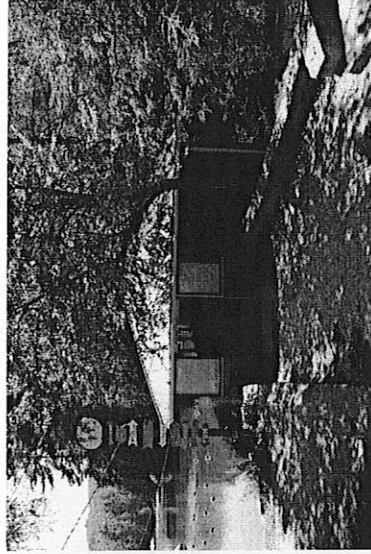
Elzie

HN868_FlatRock_CampTon-A-Wandah_09-09_cg_03.jpg



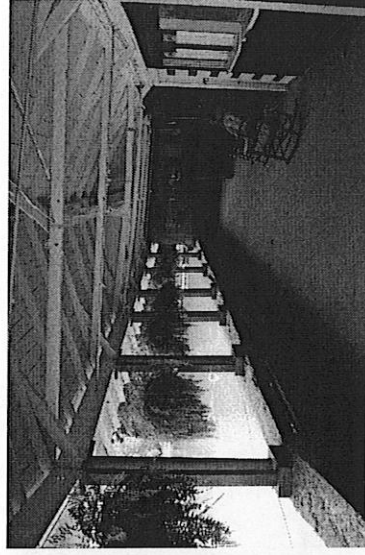
Lake & Dining Hall

HN868_FlatRock_CampTon-A-Wandah_09-09_cg_04.jpg



Dining Hall

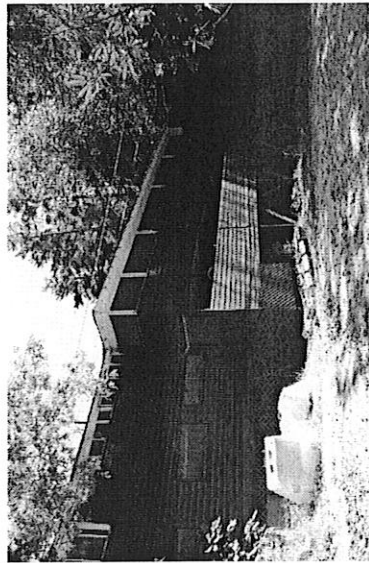
HN868_FlatRock_CampTon-A-Wandah_09-09_cg_05.jpg



Dining Hall (interior)

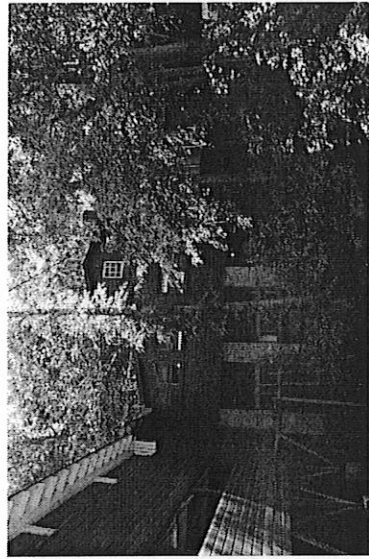
HN868_FlatRock_CampTon-A-Wandah_09-09_cg_06.jpg

HN 868 Camp Ton-A-Wandah, 276 Lake Falls Rd, Flat Rock, NC
 C. Griffith/Acme Preservation Services, September 2009



Dining Hall (rear)

HN868_FlatRock_CampTon-A-Wandah_09-09_cg_07.jpg

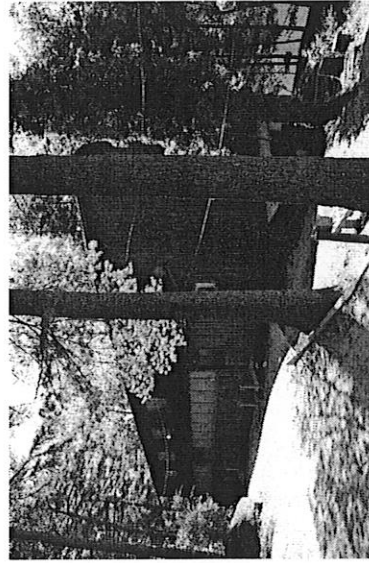


Dining Hall - kitchen wing and quarters

HN868_FlatRock_CampTon-A-Wandah_09-09_cg_08.jpg

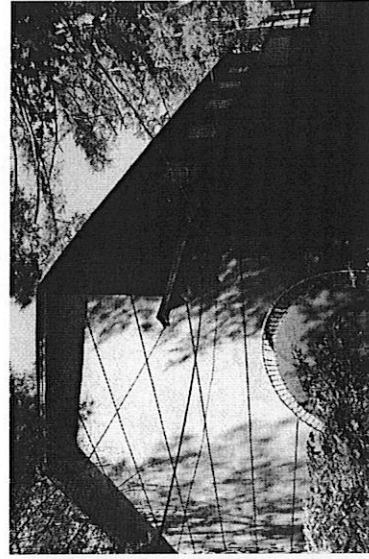


HN868_FlatRock_CampTon-A-Wandah_09-09_cg_09.jpg



Gym

HN868_FlatRock_CampTon-A-Wandah_09-09_cg_10.jpg



Gym

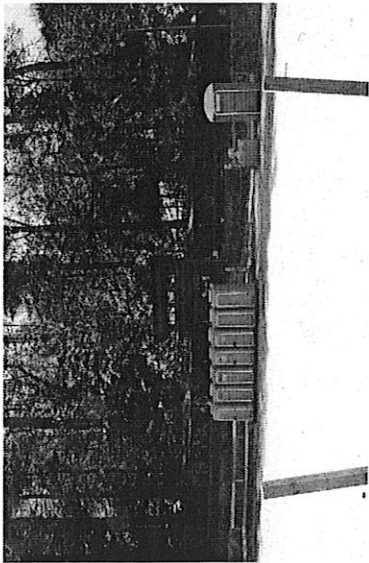
HN868_FlatRock_CampTon-A-Wandah_09-09_cg_11.jpg



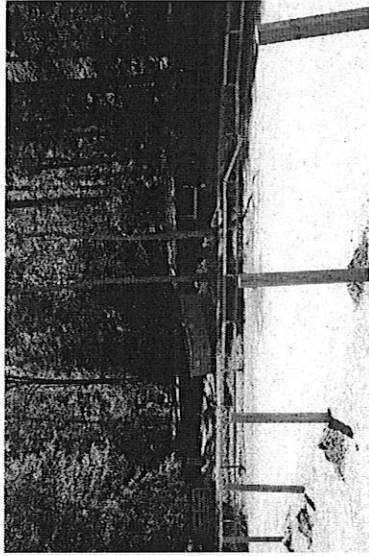
Gym

HN868_FlatRock_CampTon-A-Wandah_09-09_cg_12.jpg

HN 868 Camp Ton-A-Wandah, 276 Lake Falls Rd, Flat Rock, NC
 C. Griffith/Acme Preservation Services, September 2009



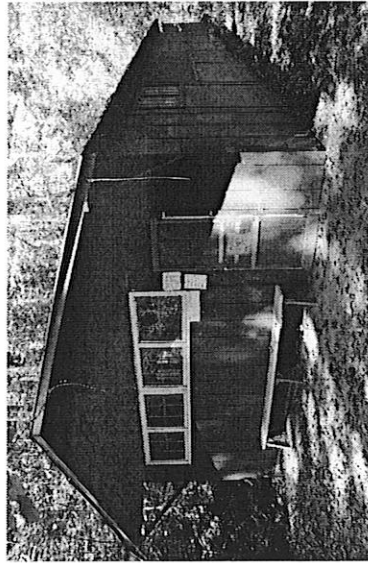
Horse barn, stables & riding rings
 HN868_FlatRock_CampTon-A-Wandah_09-09_cg_13.jpg



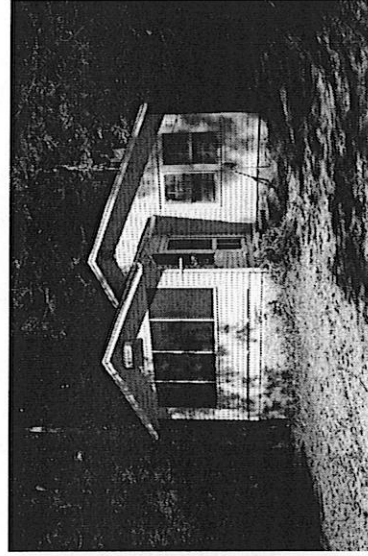
rings
 HN868_FlatRock_CampTon-A-Wandah_09-09_cg_14.jpg



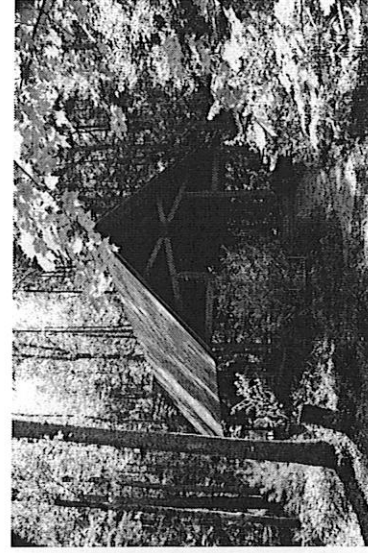
Ribben Range
 HN868_FlatRock_CampTon-A-Wandah_09-09_cg_15.jpg



Ribben range
 HN868_FlatRock_CampTon-A-Wandah_09-09_cg_16.jpg

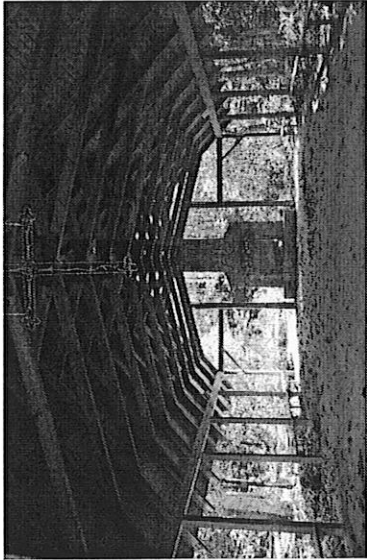


Inhormen
 HN868_FlatRock_CampTon-A-Wandah_09-09_cg_17.jpg



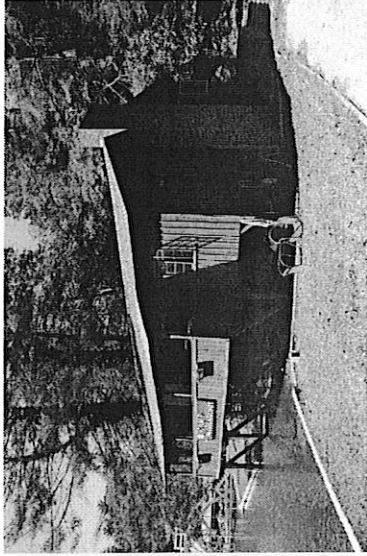
Chapel
 HN868_FlatRock_CampTon-A-Wandah_09-09_cg_18.jpg

HN 868 Camp Ton-A-Wandah, 276 Lake Falls Rd, Flat Rock, NC
C. Griffith/Acme Preservation Services, September 2009



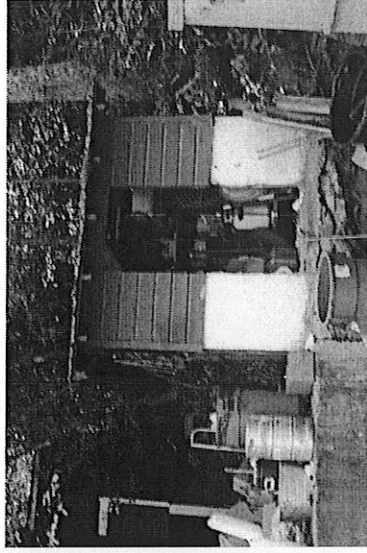
Chapel (interior)

HN868_FlatRock_CampTon-A-Wandah_09-09_cg_19.jpg



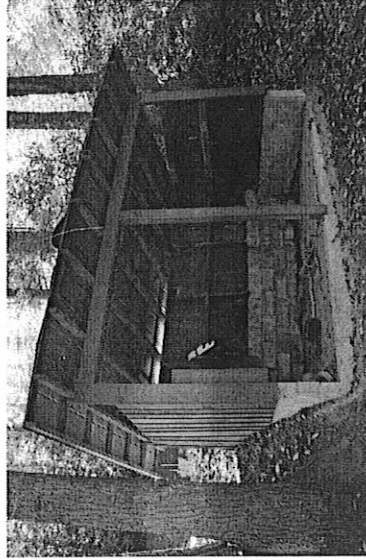
Recreation Hall

HN868_FlatRock_CampTon-A-Wandah_09-09_cg_20.jpg



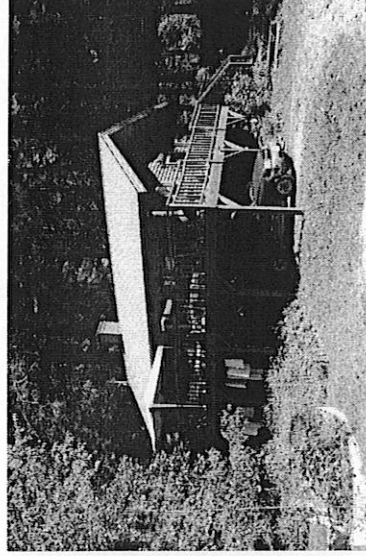
kitchen shed

HN868_FlatRock_CampTon-A-Wandah_09-09_cg_21.jpg



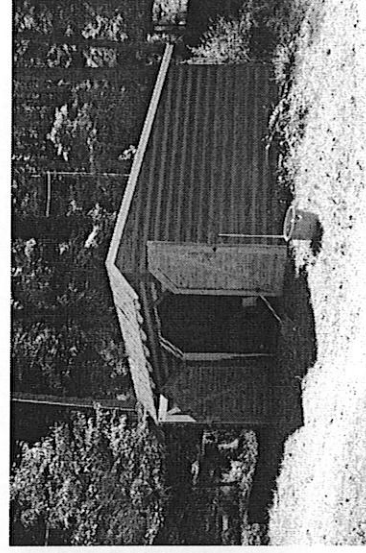
Creekside Shelter

HN868_FlatRock_CampTon-A-Wandah_09-09_cg_22.jpg



House

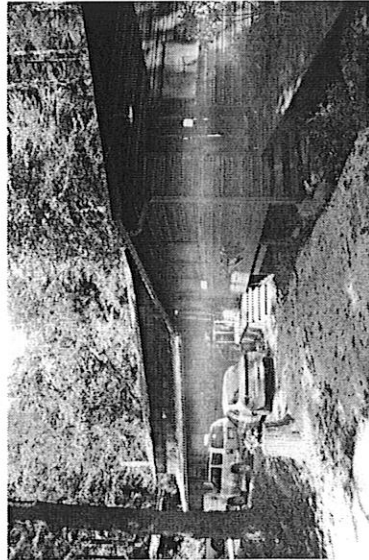
HN868_FlatRock_CampTon-A-Wandah_09-09_cg_23.jpg



Garage

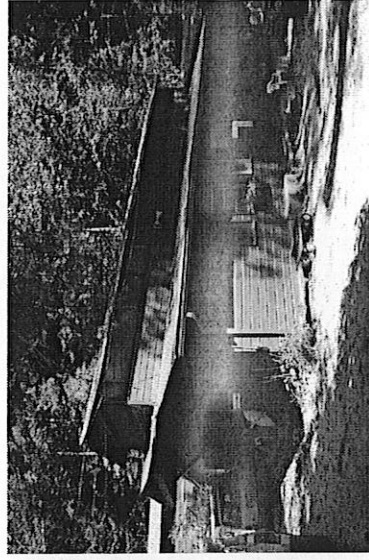
HN868_FlatRock_CampTon-A-Wandah_09-09_cg_24.jpg

HN 868 Camp Ton-A-Wandah, 276 Lake Falls Rd, Flat Rock, NC
C. Griffith/Acme Preservation Services, September 2009



Dormitory

HN868_FlatRock_CampTon-A-Wandah_09-09_cg_25.jpg



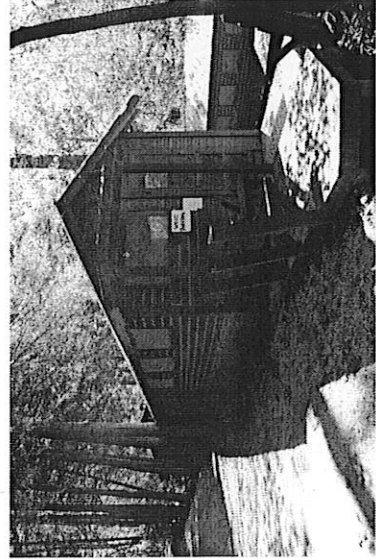
Dormitory

HN868_FlatRock_CampTon-A-Wandah_09-09_cg_26.jpg



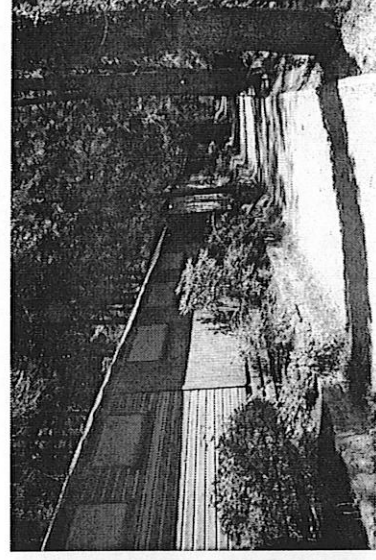
Dormitory (rear)

HN868_FlatRock_CampTon-A-Wandah_09-09_cg_27.jpg

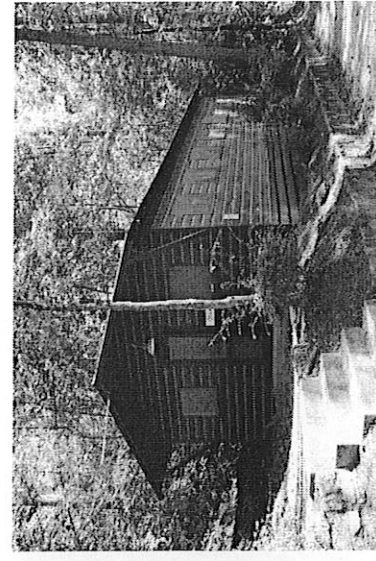


Cabin (representative)

HN868_FlatRock_CampTon-A-Wandah_09-09_cg_28.jpg

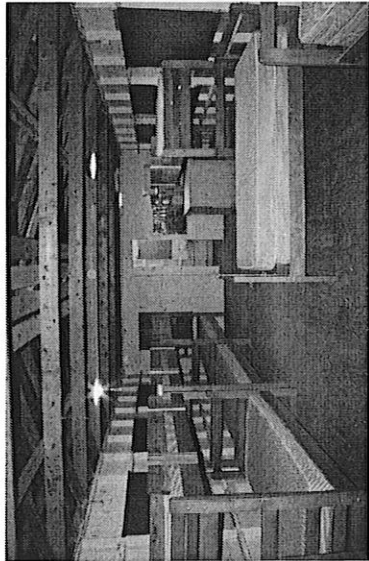


HN868_FlatRock_CampTon-A-Wandah_09-09_cg_29.jpg



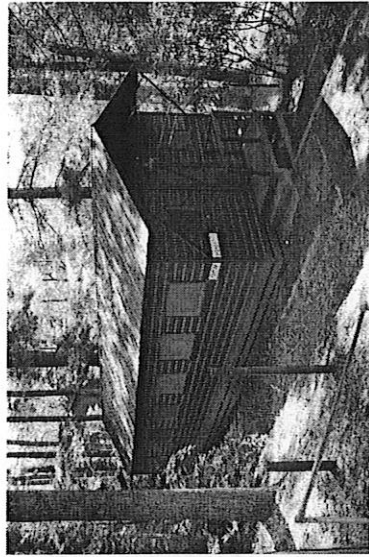
HN868_FlatRock_CampTon-A-Wandah_09-09_cg_30.jpg

HN 868 Camp Ton-A-Wandah, 276 Lake Falls Rd, Flat Rock, NC
C. Griffith/Acme Preservation Services, September 2009



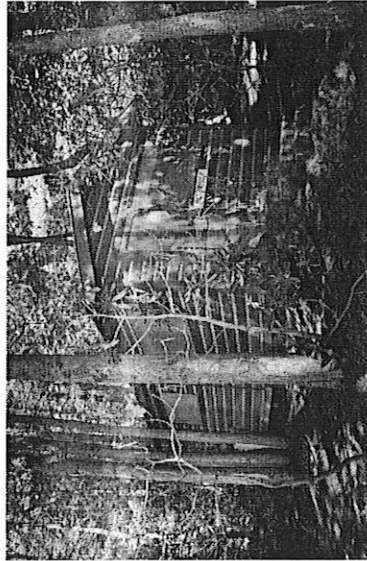
Cabin (interior)

HN868_FlatRock_CampTon-A-Wandah_09-09_cg_31.jpg

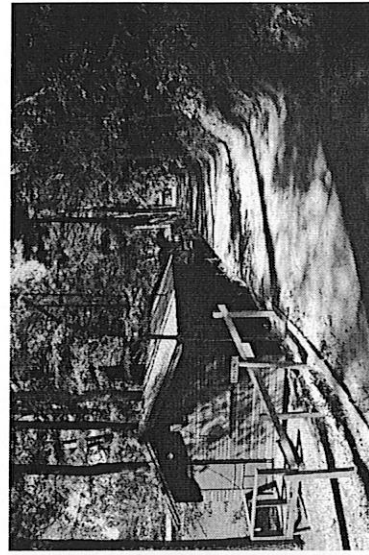


HN868_FlatRock_CampTon-A-Wandah_09-09_cg_32.jpg

Cabins (representative)



HN868_FlatRock_CampTon-A-Wandah_09-09_cg_34.jpg



HN868_FlatRock_CampTon-A-Wandah_09-09_cg_33.jpg



HN868_FlatRock_CampTon-A-Wandah_09-09_cg_35.jpg

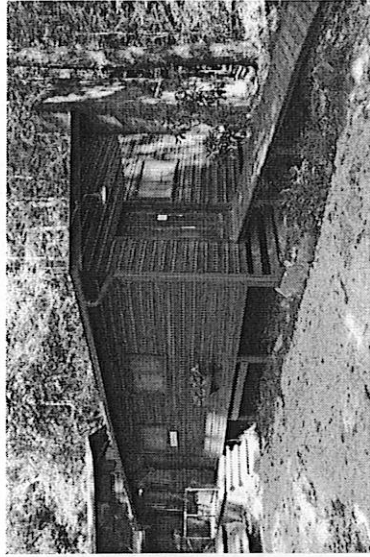


HN868_FlatRock_CampTon-A-Wandah_09-09_cg_36.jpg

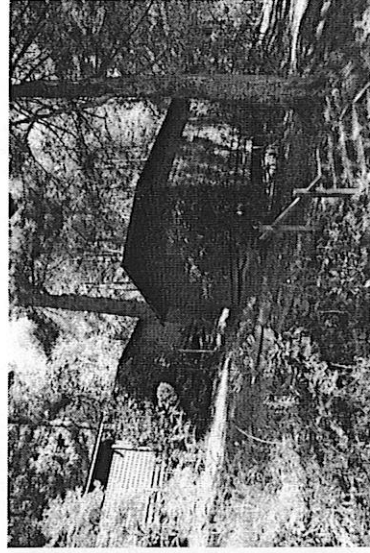
HN 868 Camp Ton-A-Wandah, 276 Lake Falls Rd, Flat Rock, NC
C. Griffith/Acme Preservation Services, September 2009



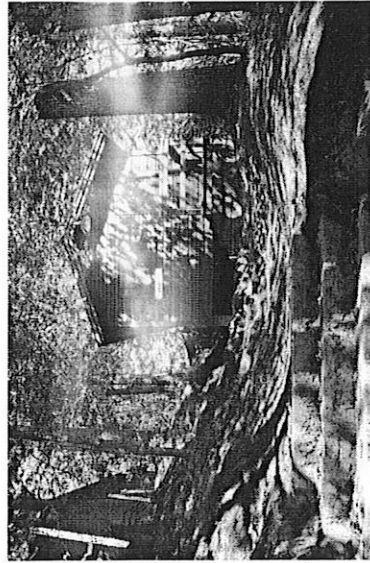
HN868_FlatRock_CampTon-A-Wandah_09-09_cg_37.jpg



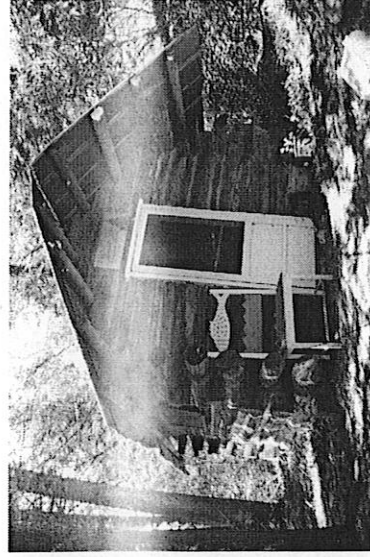
HN868_FlatRock_CampTon-A-Wandah_09-09_cg_38.jpg



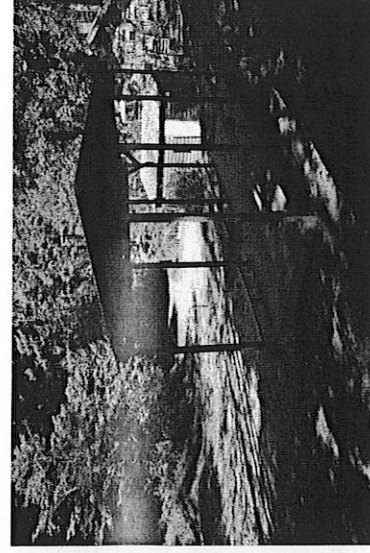
HN868_FlatRock_CampTon-A-Wandah_09-09_cg_39.jpg



HN868_FlatRock_CampTon-A-Wandah_09-09_cg_40.jpg



HN868_FlatRock_CampTon-A-Wandah_09-09_cg_41.jpg

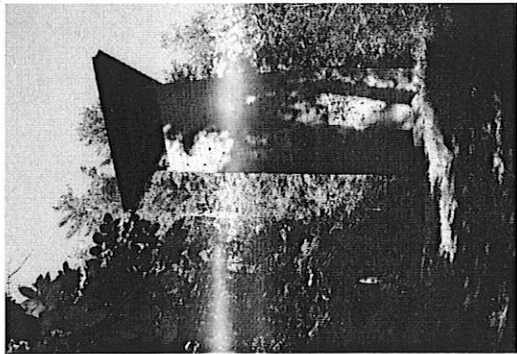


HN868_FlatRock_CampTon-A-Wandah_09-09_cg_42.jpg

Nature cabin

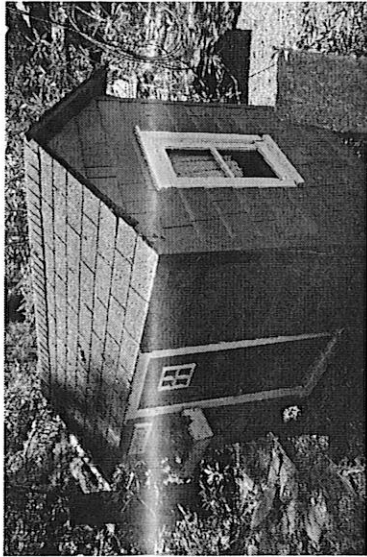
Archeology range

HN 868 Camp Ton-A-Wandah, 276 Lake Falls Rd, Flat Rock, NC
C. Griffith/Acme Preservation Services, September 2009



HN868_FlatRock_CampTon-A-Wandah_09-09_cg_43.jpg

Climbing tower



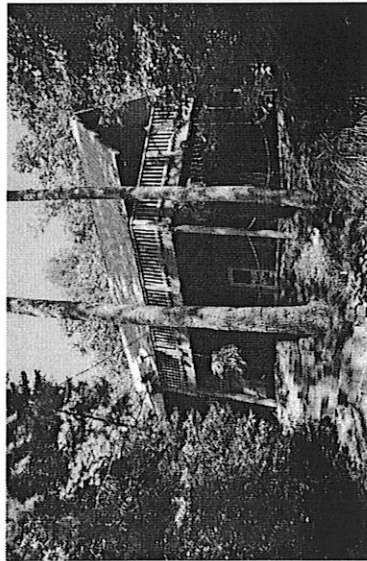
"Coohus"

HN868_FlatRock_CampTon-A-Wandah_09-09_cg_44.jpg



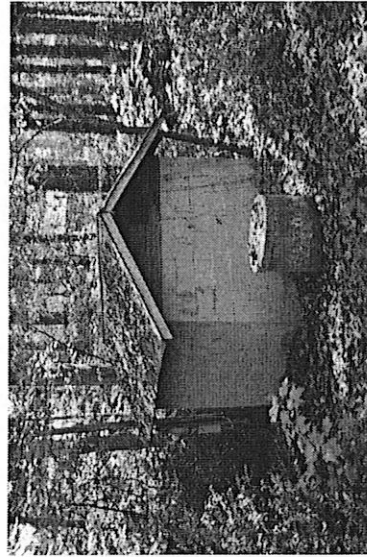
Camp Store + Cottage

HN868_FlatRock_CampTon-A-Wandah_09-09_cg_45.jpg



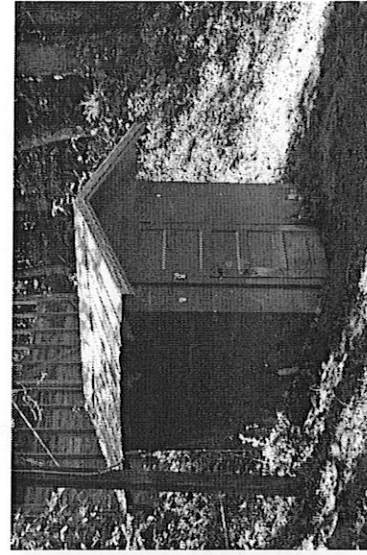
House #2

HN868_FlatRock_CampTon-A-Wandah_09-09_cg_46.jpg



Pump house #1

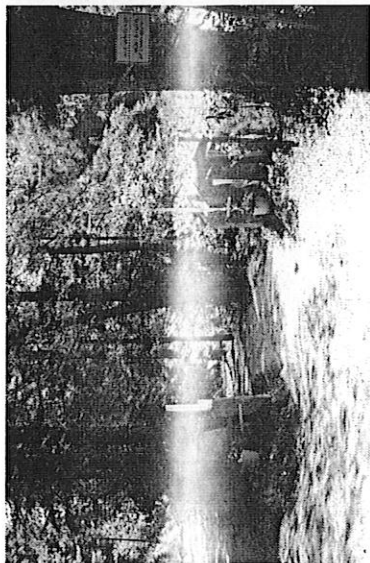
HN868_FlatRock_CampTon-A-Wandah_09-09_cg_47.jpg



Pump house #2

HN868_FlatRock_CampTon-A-Wandah_09-09_cg_48.jpg

HN 868 Camp Ton-A-Wandah, 276 Lake Falls Rd, Flat Rock, NC
 C. Griffith/Acme Preservation Services, September 2009

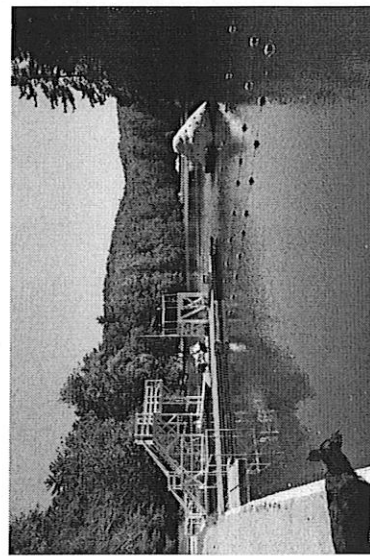


HN868_FlatRock_CampTon-A-Wandah_09-09_cg_49.jpg

landscape

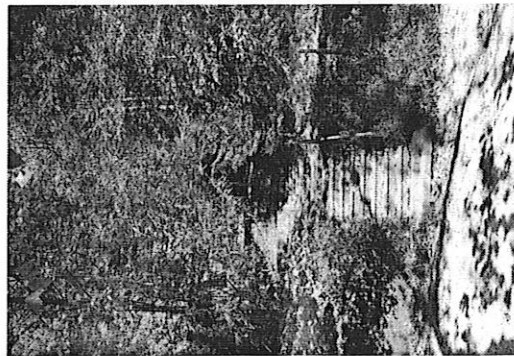


HN868_FlatRock_CampTon-A-Wandah_09-09_cg_50.jpg

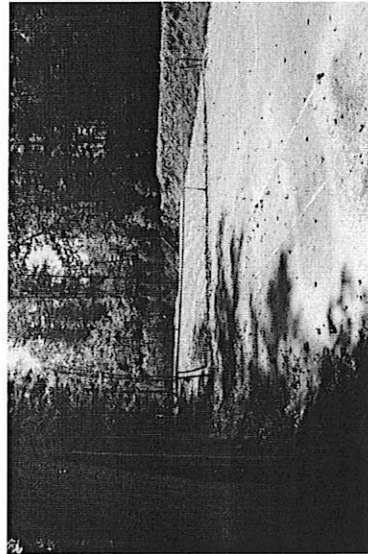


HN868_FlatRock_CampTon-A-Wandah_09-09_cg_51.jpg

lake

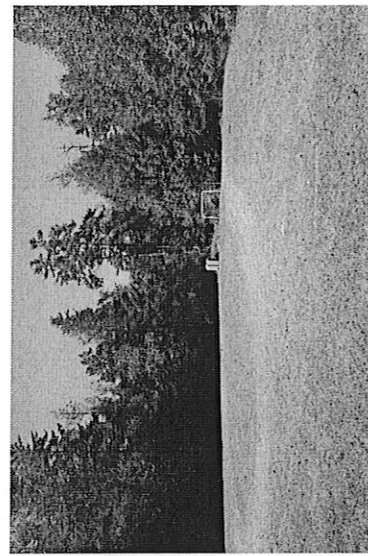


HN868_FlatRock_CampTon-A-Wandah_09-09_cg_52.jpg



HN868_FlatRock_CampTon-A-Wandah_09-09_cg_53.jpg

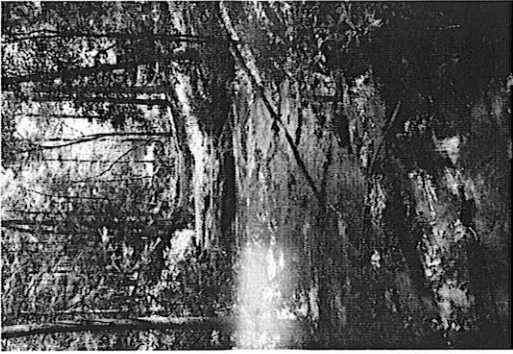
tennis court



HN868_FlatRock_CampTon-A-Wandah_09-09_cg_54.jpg

playing field

HN 868 Camp Ton-A-Wandah, 276 Lake Falls Rd, Flat Rock, NC
C. Griffith/Acme Preservation Services, September 2009



HN868_FlatRock_CampTon-A-Wandah_09-09_cg_55.jpg

Creek