

- GENERAL NOTES**
- OUTLET AND EQUIPMENT LOCATIONS ARE SHOWN FOR REFERENCE. COORDINATE WITH BRCC IT DEPT. AND ARCHITECT FOR FINAL LOCATIONS OF DEVICES AND VOICE/DATA OUTLETS.
 - CABLES CONTAINED IN CABLE TRAYS NEED NOT BE IN CONDUIT EXCEPT FIBER OPTIC CABLES, WHICH SHALL BE IN INNERDUCT.
 - COORDINATE WITH OTHER TRADES PLANS PRIOR TO INSTALLING CABLE TRAY TO ENSURE OF NO EQUIPMENT CONFLICTS.
 - FIRESEAL ALL WALL AND FLOOR PENETRATIONS WITH UL LISTED FIRE SEALANT.
 - SEE DETAIL 9 ON ET501 FOR INTERCONNECTIVITY RACEWAYS BETWEEN FLOORBOXES, TV BOXES, PROJECTORS, AND CEILING MOUNTED DATA OUTLETS.
- KEY NOTES**
- PROVIDE TELECOM 12" WIRE MESH CABLE TRAY ABOVE CEILING AS SHOWN.
 - PROVIDE 18" X 6" TELECOM LADDER CABLE TRAY ABOVE CEILING AS SHOWN.
 - PROVIDE 19" FLOOR MOUNTED TELECOM RACK.
 - PROVIDE (4) 4" CONDUIT SLEEVE(S) ABOVE CEILING TO CABLE TRAY ABOVE CORRIDOR. ALL BENDS SHALL BE LARGE RADIUS SWEEPING BENDS.
 - PROVIDE FIRE RETARDANT DOUBLE COATED 8'X4' PLYWOOD BACKBOARD AS SHOWN.
 - PROVIDE (2) 2" CONDUIT SLEEVE WITH NYLON BUSHINGS ABOVE ACCESSIBLE CEILING. TYPICAL FOR ALL LOCATIONS SHOWN ON PLANS.
 - PROVIDE (4) 4" CONDUIT SLEEVE(S) ABOVE CEILING TO CABLE TRAY ABOVE FLEX LAB B. ALL BENDS SHALL BE LARGE RADIUS BENDS.
 - COORDINATE EXACT LOCATION OF CCTV CAMERA LOCATION WITH OWNER.

HENDERSON COUNTY AND BLUE RIDGE
COMMUNITY COLLEGE
**BRCC - PATTON HALL
INTERIOR RENOVATION
AND ADDITION**
180 W CAMPUS DR.
FLAT ROCK, NC 28731

DESIGNER

CLARK NEXSEN

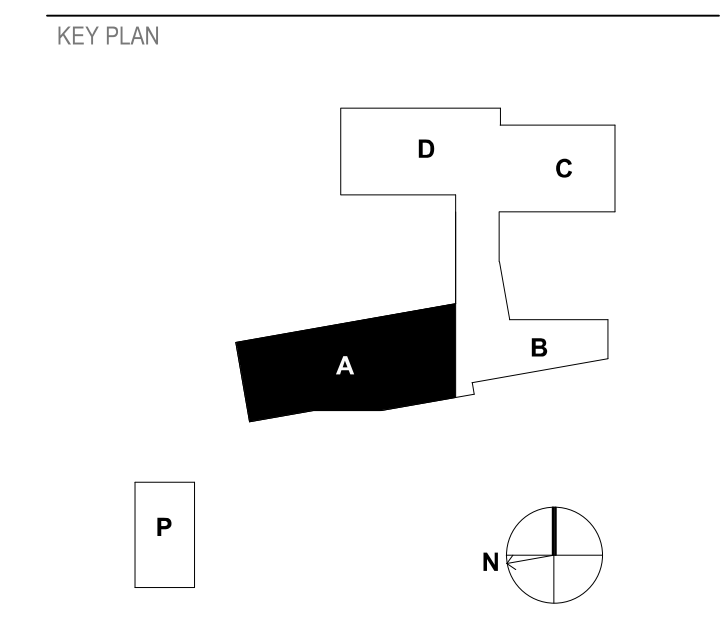
301 College Street, Suite 300
Asheville, North Carolina 28801
828-232-0606
www.clarknexsen.com

SEALS

SUBMITTAL
10/19/20
CONSTRUCTION DOCUMENTS

REVISIONS

1	11/20/20	ADDENDUM 1



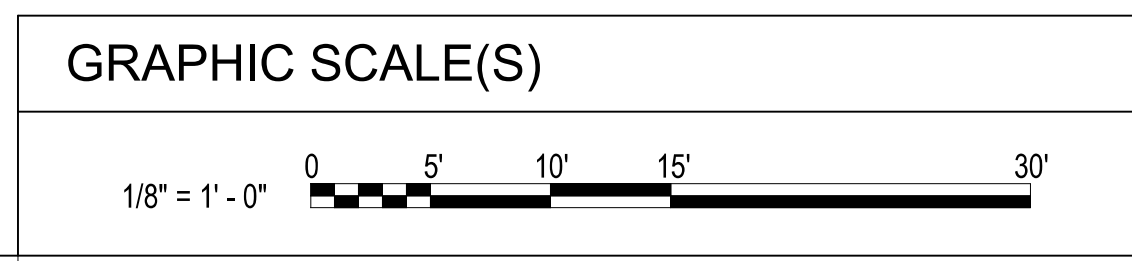
SHEET
**SPECIAL SYSTEMS FLOOR
PLAN - LEVEL 0 - AREA A**

ET101

DESIGN: MRB
DRAWN: SJB
REVIEW: SPS

CN 5199-L

1 SPECIAL SYSTEMS FLOOR PLAN - LEVEL 0 - AREA A
1/8" = 1'-0"



11/19/2020 3:14:49 PM
C:\Revit\Projects\1994-48RCC_ET01_MichaelBrooks.rvt

1 2 3 4 5 6

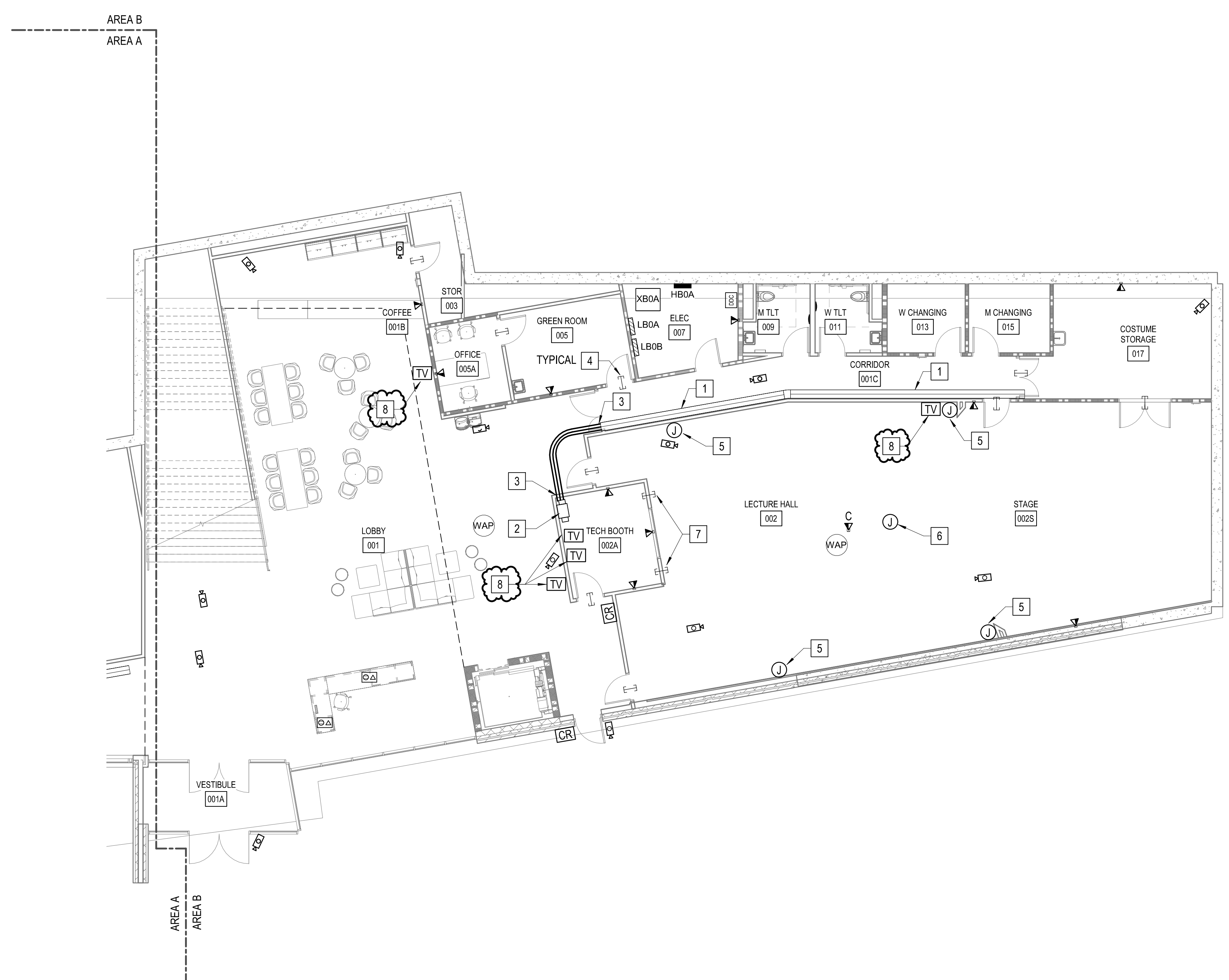
E

D

C

B

A



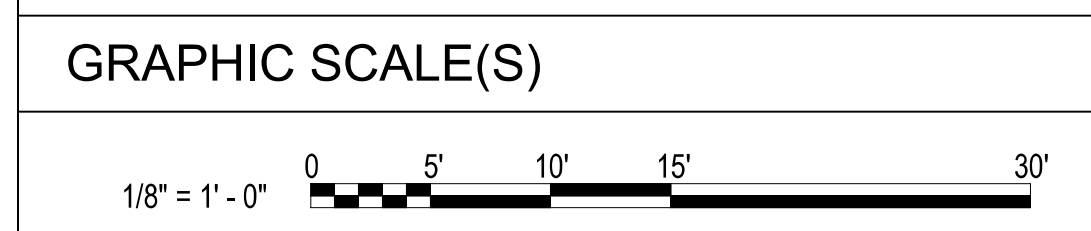
1 SPECIAL SYSTEMS FLOOR PLAN - LEVEL 0 - AREA B
1/8" = 1'-0"

6 GENERAL NOTES

- A. OUTLET AND EQUIPMENT LOCATIONS ARE SHOWN FOR REFERENCE. COORDINATE WITH BRCC IT DEPT. AND ARCHITECT FOR FINAL LOCATIONS OF DEVICES AND VOICE/DATA OUTLETS.
- B. CABLES CONTAINED IN CABLE TRAYS NEED NOT BE IN CONDUIT EXCEPT FIBER OPTIC CABLES, WHICH SHALL BE IN INNERDUCT.
- C. COORDINATE WITH OTHER TRADES PLANS PRIOR TO INSTALLING CABLE TRAY TO ENSURE OF NO EQUIPMENT CONFLICTS.
- D. FIRESEAL ALL WALL AND FLOOR PENETRATIONS WITH UL LISTED FIRE SEALANT.
- E. SEE DETAIL 9 ON ET501 FOR INTERCONNECTIVITY RACEWAYS BETWEEN FLOORBOXES, TV BOXES, PROJECTORS, AND CEILING MOUNTED DATA OUTLETS.

KEY NOTES

- 1 PROVIDE TELECOM 12" WIRE MESH CABLE TRAY ABOVE CEILING AS SHOWN.
- 2 PROVIDE WALL MOUNTED TELECOM RACK PER SPECIFICATIONS.
- 3 PROVIDE (4) 4" CONDUIT SLEEVE(S) ABOVE CEILING TO CABLE TRAY ABOVE CORRIDOR. ALL BENDS SHALL BE LARGE RADIUS SWEEPING BENDS.
- 4 PROVIDE (2) 2" CONDUIT SLEEVE WITH NYLON BUSHINGS ABOVE ACCESSIBLE CEILING. TYPICAL FOR ALL LOCATIONS SHOWN ON PLANS.
- 5 ROUTE 1" CONDUIT FROM J-BOX TO TECHBOOTH 002A FOR SPEAKER INSTALLATION. COORDINATE EXACT LOCATION WITH OWNER PRIOR TO ROUGH-IN.
- 6 ROUTE 1" CONDUIT FROM J-BOX IN CEILING TO TECHBOOTH 002A FOR CEILING MOUNTED SPEAKER CLUSTER INSTALLATION. COORDINATE EXACT LOCATION WITH OWNER PRIOR TO ROUGH-IN.
- 7 PROVIDE 2" CONDUIT SLEEVE WITH NYLON BUSHINGS ABOVE ACCESSIBLE CEILING FOR FUTURE SOUND CABLING INSTALLATION. TYPICAL FOR ALL LOCATIONS SHOWN ON PLANS.
- 8 POWER, DATA, AND COMPUTER/ HDMI CONNECTIONS TO TELEVISION. COORDINATE MOUNTING HEIGHT WITH ARCHITECT/ OWNER. PROVIDE FSR-PWB-250 BOX OR APPROVED EQUAL. PROVIDE (1) 1 1/4" CONDUIT TO ABOVE CABLE TRAY FOR DATA AND (1) 1 1/4" CONDUIT TO TECH BOOTH 002A FOR COMPUTER/ HDMI CONNECTIONS. COORDINATE EXACT STUB UP LOCATIONS IN TECH BOOTH WITH ARCHITECT/ OWNER. COORDINATE EXACT FSR BOX INSERTS WITH OWNER.



HENDERSON COUNTY AND BLUE RIDGE
COMMUNITY COLLEGE
BRCC - PATTON HALL
INTERIOR RENOVATION
AND ADDITION
180 W CAMPUS DR.
FLAT ROCK, NC 28731

DESIGNER

CLARK NEXSEN

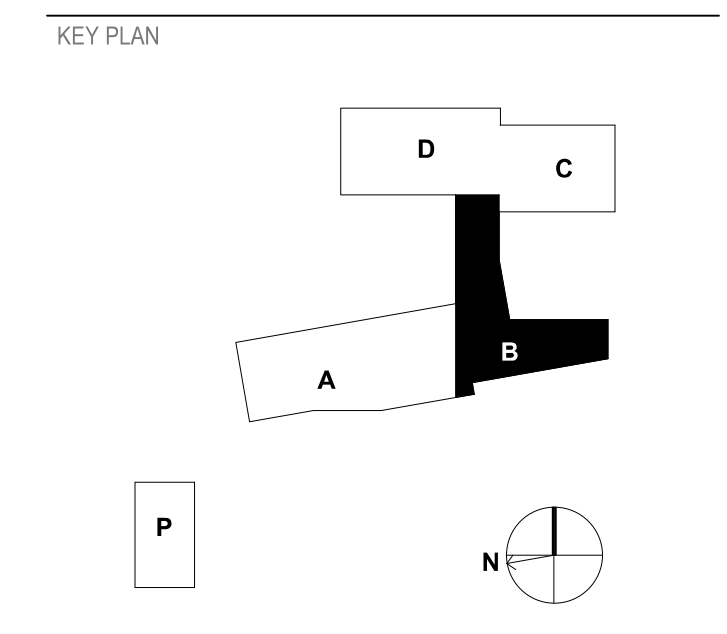
301 College Street, Suite 300
Asheville, North Carolina 28801
828-232-0000
www.clarknexsen.com

SEALS

SUBMITTAL
10/19/20
CONSTRUCTION DOCUMENTS

REVISIONS

1	11/20/20	ADDENDUM 1



SHEET
SPECIAL SYSTEMS FLOOR PLAN - LEVEL 0 - AREA B

ET102

DESIGN: MRB
DRAWN: SJB
REVIEW: SPS

CN 5199-L

1/11/2020 3:4:51 PM
C:\Revit\Projects\1994-48RCC_ET02_MichaelBrookins.rvt



1 SPECIAL SYSTEMS FLOOR PLAN - LEVEL 1 - AREA A

1/8" = 1'-0"

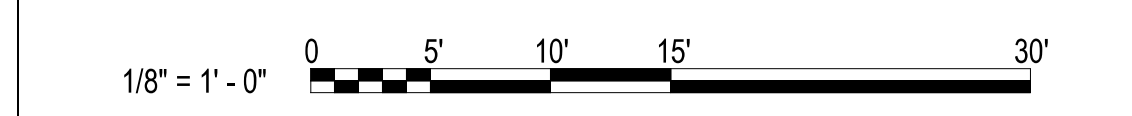
GENERAL NOTES

- A. OUTLET AND EQUIPMENT LOCATIONS ARE SHOWN FOR REFERENCE. COORDINATE WITH BRCC IT DEPT. AND ARCHITECT FOR FINAL LOCATIONS OF DEVICES AND VOICE/DATA OUTLETS.
- B. CABLES CONTAINED IN CABLE TRAYS NEED NOT BE IN CONDUIT EXCEPT FIBER OPTIC CABLES, WHICH SHALL BE IN INNERDUCT.
- C. COORDINATE WITH OTHER TRADES PLANS PRIOR TO INSTALLING CABLE TRAY TO ENSURE OF NO EQUIPMENT CONFLICTS.
- D. FIRESEAL ALL WALL AND FLOOR PENETRATIONS WITH UL LISTED FIRE SEALANT.
- E. SEE DETAIL 9 ON ET501 FOR INTERCONNECTIVITY RACEWAYS BETWEEN FLOORBOXES, TV BOXES, PROJECTORS, AND CEILING MOUNTED DATA OUTLETS.

KEY NOTES

- 1 PROVIDE TELECOM 12" WIRE MESH CABLE TRAY ABOVE CEILING AS SHOWN.
- 2 PROVIDE 18" X 6" TELECOM LADDER TRAY ABOVE CEILING AS SHOWN.
- 3 PROVIDE 19" FLOOR MOUNTED TELECOM RACK.
- 4 PROVIDE (4) 4" CONDUIT SLEEVE(S) ABOVE CEILING TO CABLE TRAY ABOVE CORRIDOR. ALL BENDS SHALL BE LARGE RADIUS SWEEPING BENDS.
- 5 PROVIDE FIRE RETARDANT DOUBLE COATED 8'X4' PLYWOOD BACKBOARD AS SHOWN.
- 6 PROVIDE (2) 2" CONDUIT SLEEVE WITH NYLON BUSHINGS ABOVE ACCESSIBLE CEILING. TYPICAL FOR ALL LOCATIONS SHOWN ON PLANS.
- 7 (4) 4" CONDUITS FROM DATA/ TEL 030C ROUTED TO CABLE TRAY AT THIS LOCATION. SEE KEY NOTE 7 ON SHEET ET101 FOR MORE INFORMATION.

GRAPHIC SCALE(S)



HENDERSON COUNTY AND BLUE RIDGE COMMUNITY COLLEGE
BRCC - PATTON HALL
INTERIOR RENOVATION
AND ADDITION
 180 W CAMPUS DR.
 FLAT ROCK, NC 28731



DESIGNER

CLARK NEXSEN

301 College Street, Suite 300
 Asheville, North Carolina 28801
 828-232-0606
 www.clarknexsen.com

SEALS



SUBMITTAL

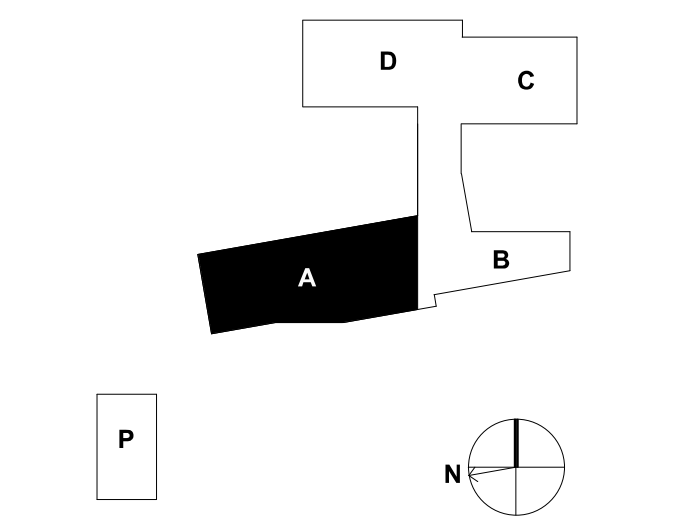
10/19/20

CONSTRUCTION DOCUMENTS

REVISIONS

NO.	DATE	DESCRIPTION
1	11/20/20	ADDENDUM 1
4	02/25/21	CONFORMED SET
7	05/12/21	Early Childhood

KEY PLAN



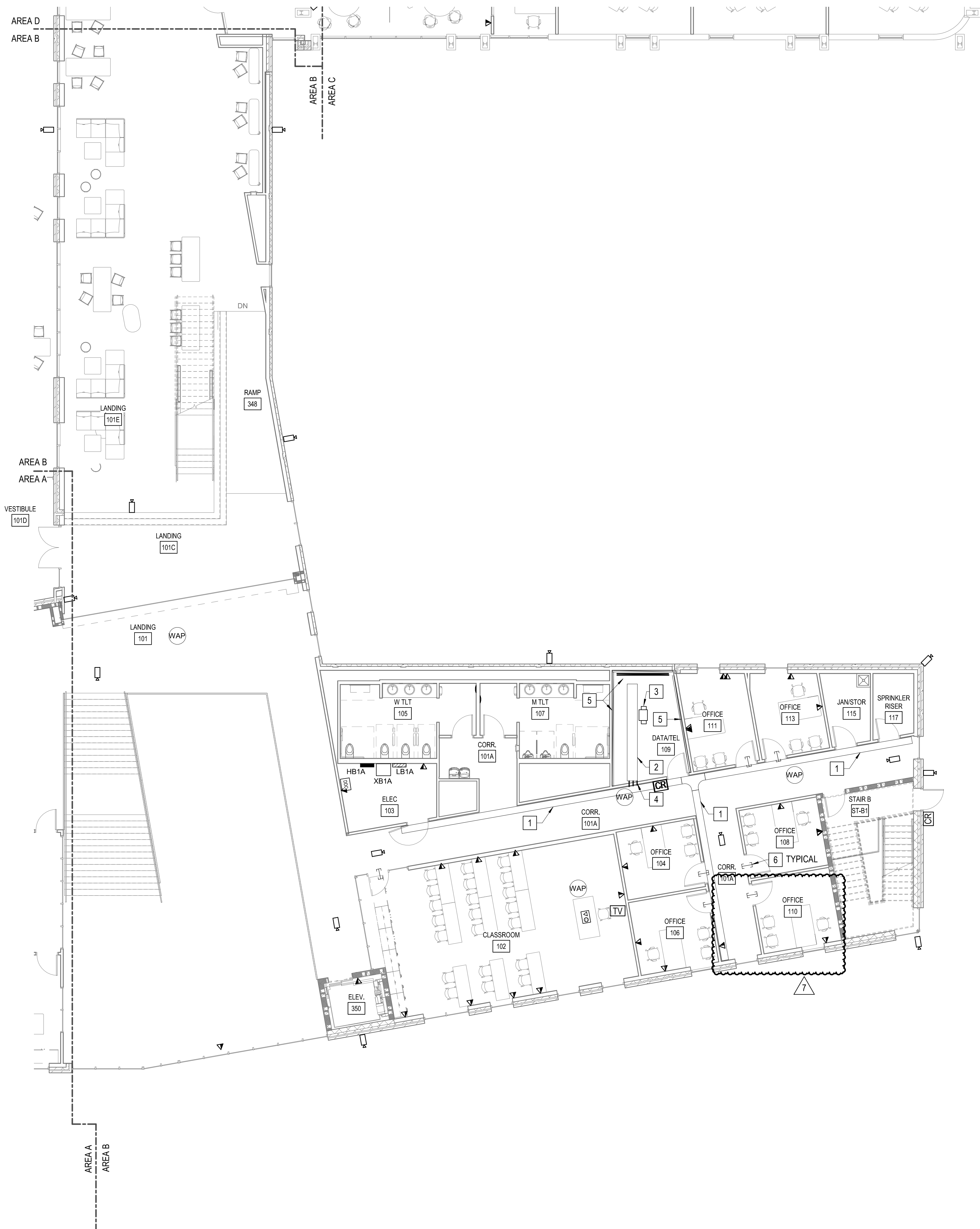
SHEET

SPECIAL SYSTEMS FLOOR PLAN - LEVEL 1 - AREA A

ET103

DESIGN: MRB
 DRAWN: SJB
 REVIEW: SPS

CN 5199-L



1 SPECIAL SYSTEMS FLOOR PLAN - LEVEL 1 - AREA B
1/8" = 1'-0"

6 GENERAL NOTES

- A. OUTLET AND EQUIPMENT LOCATIONS ARE SHOWN FOR REFERENCE. COORDINATE WITH BRCC IT DEPT. AND ARCHITECT FOR FINAL LOCATIONS OF DEVICES AND VOICE/DATA OUTLETS.
- B. CABLES CONTAINED IN CABLE TRAYS NEED NOT BE IN CONDUIT EXCEPT FIBER OPTIC CABLES, WHICH SHALL BE IN INNERDUCT.
- C. COORDINATE WITH OTHER TRADES PLANS PRIOR TO INSTALLING CABLE TRAY TO ENSURE OF NO EQUIPMENT CONFLICTS.
- D. FIRESEAL ALL WALL AND FLOOR PENETRATIONS WITH UL LISTED FIRE SEALANT.
- E. SEE DETAIL 9 ON ET501 FOR INTERCONNECTIVITY RACEWAYS BETWEEN FLOORBOXES, TV BOXES, PROJECTORS, AND CEILING MOUNTED DATA OUTLETS.

KEY NOTES

- 1 PROVIDE TELECOM 12" WIRE MESH CABLE TRAY ABOVE CEILING AS SHOWN.
- 2 PROVIDE 18" X 6" TELECOM LADDER TRAY ABOVE CEILING AS SHOWN.
- 3 PROVIDE 19" FLOOR MOUNTED TELECOM RACK.
- 4 PROVIDE (4) 4" CONDUIT SLEEVE(S) ABOVE CEILING TO CABLE TRAY ABOVE CORRIDOR. ALL BENDS SHALL BE LARGE RADIUS SWEEPING BENDS.
- 5 PROVIDE FIRE RETARDANT DOUBLE COATED 8'X4' PLYWOOD BACKBOARD AS SHOWN.
- 6 PROVIDE (2) 2" CONDUIT SLEEVE WITH NYLON BUSHINGS ABOVE ACCESSIBLE CEILING. TYPICAL FOR ALL LOCATIONS SHOWN ON PLANS.

HENDERSON COUNTY AND BLUE RIDGE
COMMUNITY COLLEGE
BRCC - PATTON HALL
INTERIOR RENOVATION
AND ADDITION
180 W CAMPUS DR.
FLAT ROCK, NC 28731

DESIGNER

CLARK NEXSEN

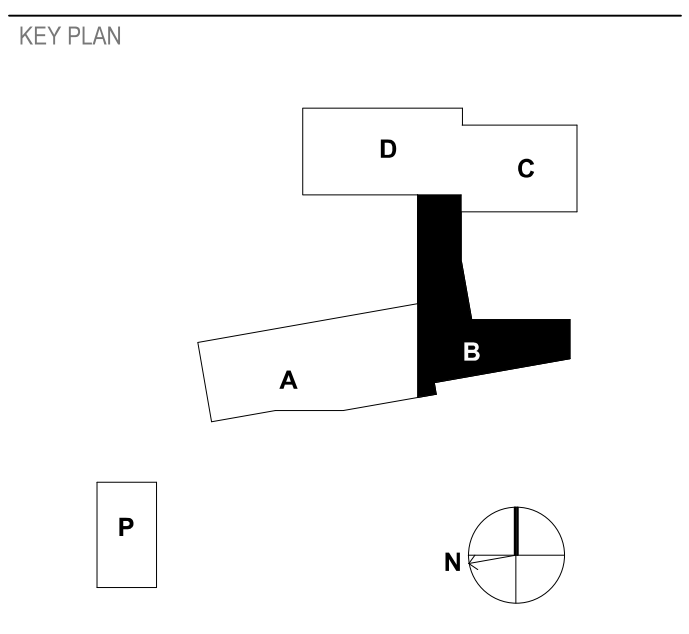
301 College Street, Suite 300
Asheville, North Carolina 28801
828-232-0000
www.clarknexsen.com

SEALS

SUBMITTAL
10/19/20
CONSTRUCTION DOCUMENTS

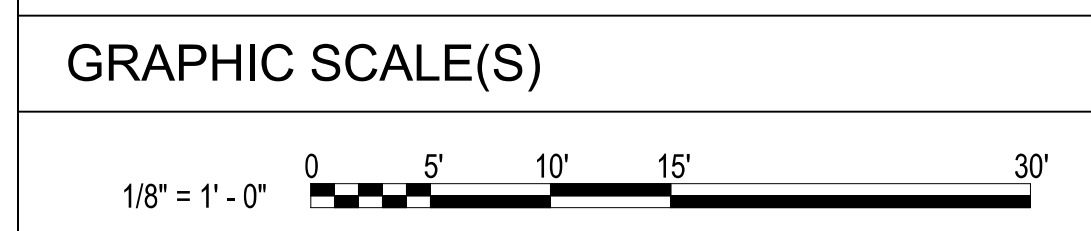
REVISIONS

1	11/20/20	ADDENDUM 1
4	02/25/21	CONFORMED SET
7	05/12/21	Early Childhood



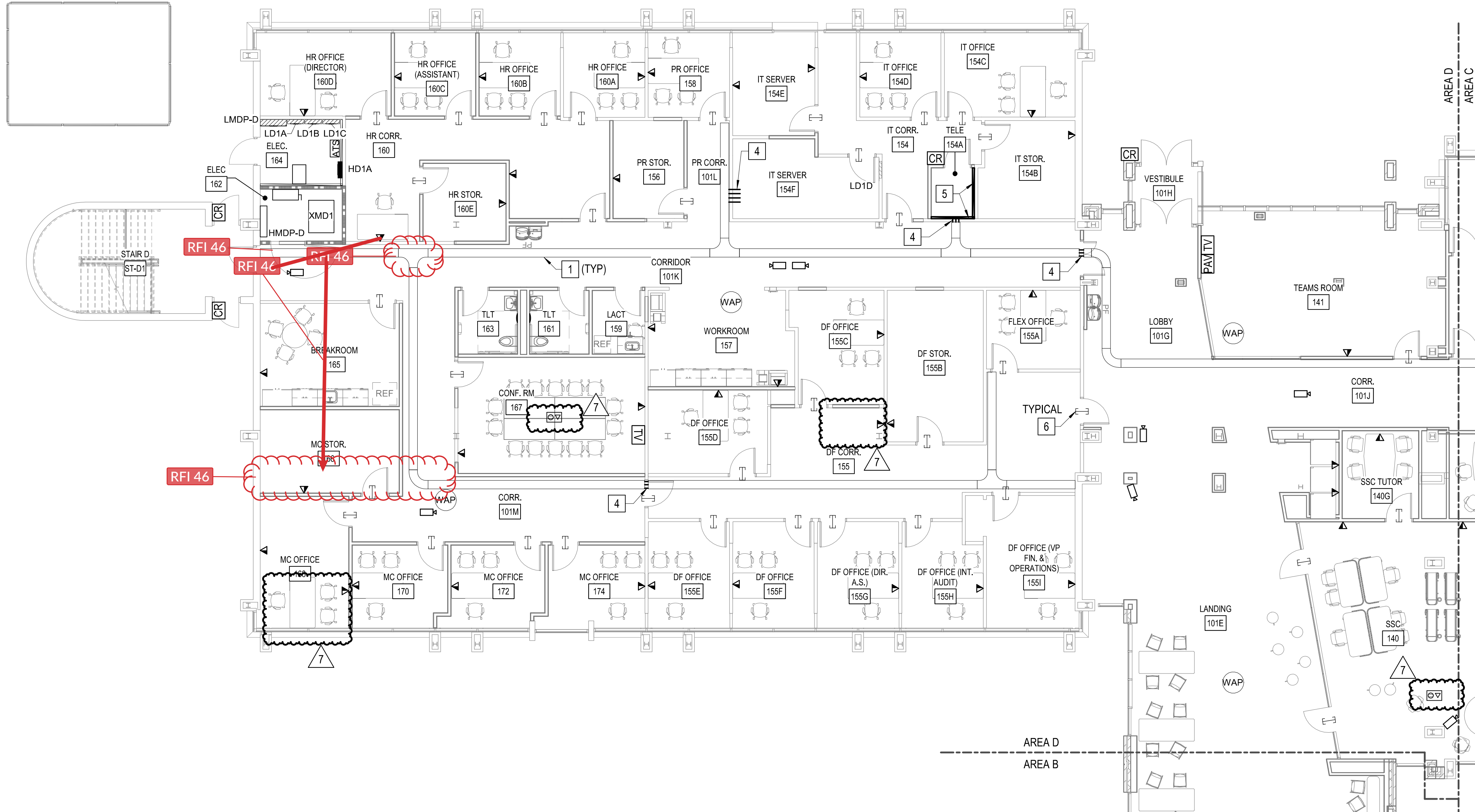
SHEET
SPECIAL SYSTEMS FLOOR PLAN - LEVEL 1 - AREA B

ET104

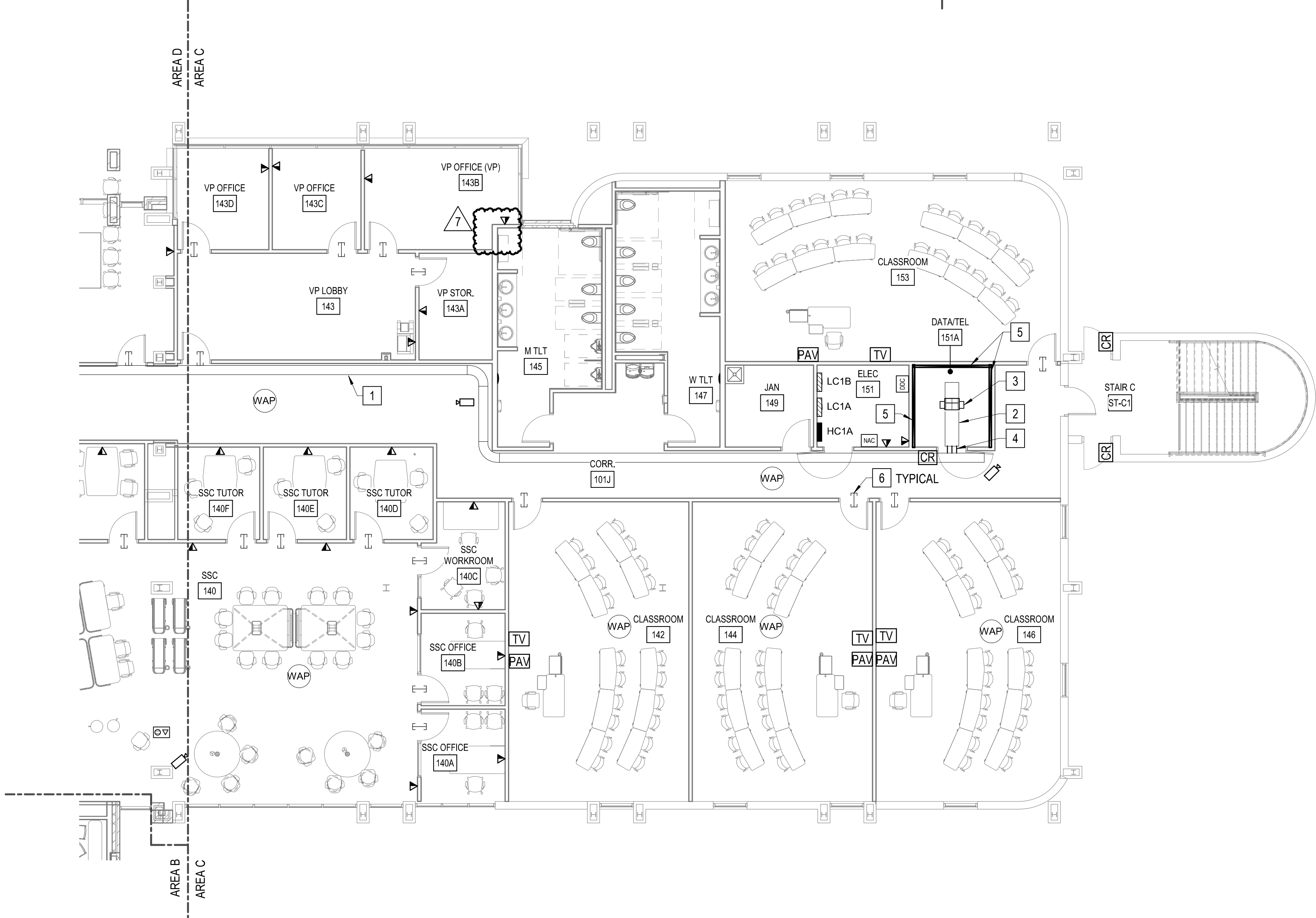


DESIGN: MRB
DRAWN: SJB
REVIEW: SPS

CN 5199-L



2 SPECIAL SYSTEMS FLOOR PLAN - LEVEL 1 - AREA D
1/8" = 1'-0"



1 SPECIAL SYSTEMS FLOOR PLAN - LEVEL 1 - AREA C
1/8" = 1'-0"

GENERAL NOTES

- A. OUTLET AND EQUIPMENT LOCATIONS ARE SHOWN FOR REFERENCE. COORDINATE WITH BRCC IT DEPT. AND ARCHITECT FOR FINAL LOCATIONS OF DEVICES AND VOICE/DATA OUTLETS.
- B. CABLES CONTAINED IN CABLE TRAYS NEED NOT BE IN CONDUIT EXCEPT FIBER OPTIC CABLES, WHICH SHALL BE IN INNERDUCT.
- C. COORDINATE WITH OTHER TRADES PLANS PRIOR TO INSTALLING CABLE TRAY TO ENSURE OF NO EQUIPMENT CONFLICTS.
- D. FIRESEAL ALL WALL AND FLOOR PENETRATIONS WITH UL LISTED FIRE SEALANT.
- E. SEE DETAIL 9 ON ET501 FOR INTERCONNECTIVITY RACEWAYS BETWEEN FLOORBOXES, TV BOXES, PROJECTORS, AND CEILING MOUNTED DATA OUTLETS.

KEY NOTES

- 1 PROVIDE TELECOM 12" WIRE MESH CABLE TRAY ABOVE CEILING AS SHOWN.
- 2 PROVIDE 18" X 6" TELECOM LADDER TRAY ABOVE CEILING AS SHOWN.
- 3 PROVIDE 19" FLOOR MOUNTED TELECOM RACK.
- 4 PROVIDE (4) 4" CONDUIT SLEEVE(S) ABOVE CEILING TO CABLE TRAY ABOVE CORRIDOR. ALL BENDS SHALL BE LARGE RADIUS SWEEPING BENDS.
- 5 PROVIDE FIRE RETARDANT DOUBLE COATED 8X4' PLYWOOD BACKBOARD AS SHOWN.
- 6 PROVIDE (2) 2" CONDUIT SLEEVE WITH NYLON BUSHINGS ABOVE ACCESSIBLE CEILING. TYPICAL FOR ALL LOCATIONS SHOWN ON PLANS.

HENDERSON COUNTY AND BLUE RIDGE
COMMUNITY COLLEGE
**BRCC - PATTON HALL
INTERIOR RENOVATION
AND ADDITION**
180 W CAMPUS DR.
FLAT ROCK, NC 28731

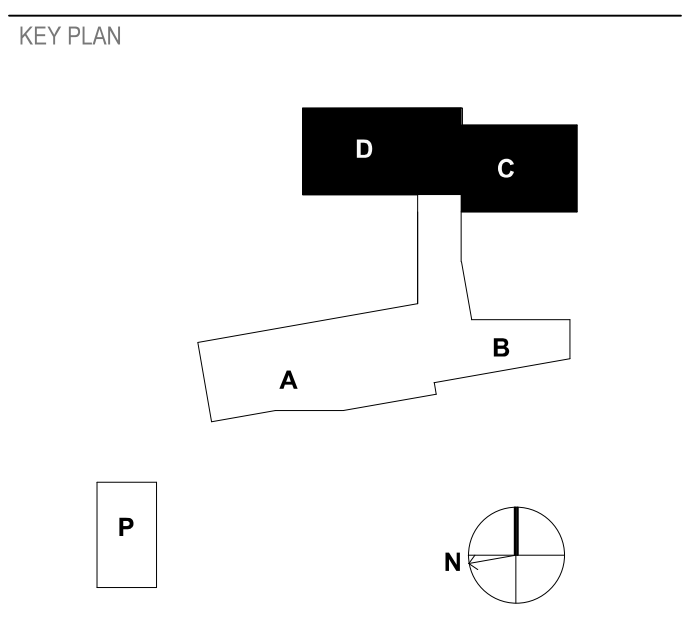
DESIGNER
CLARK NEXSEN
301 College Street, Suite 300
Asheville, North Carolina 28801
828-232-0606
www.clarknexsen.com

SEALS

SUBMITTAL
10/19/20
CONSTRUCTION DOCUMENTS

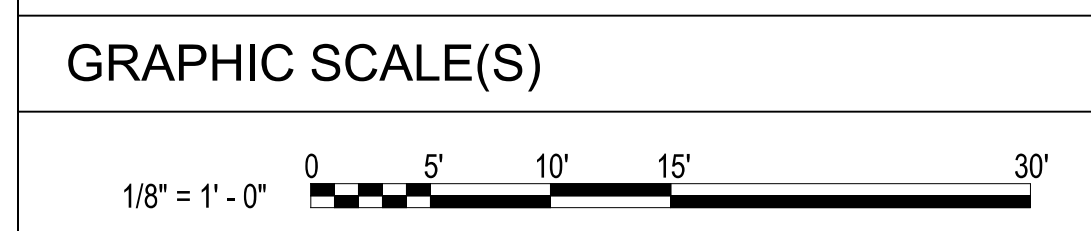
REVISIONS

1	11/20/20	ADDENDUM 1
7	05/12/21	Early Childhood



SHEET
SPECIAL SYSTEMS FLOOR
PLAN - LEVEL 1 - AREA C & D

ET105



DESIGN: MRB
DRAWN: SJB
REVIEW: SPS
CN 5199-L

1 2 3 4 5 6

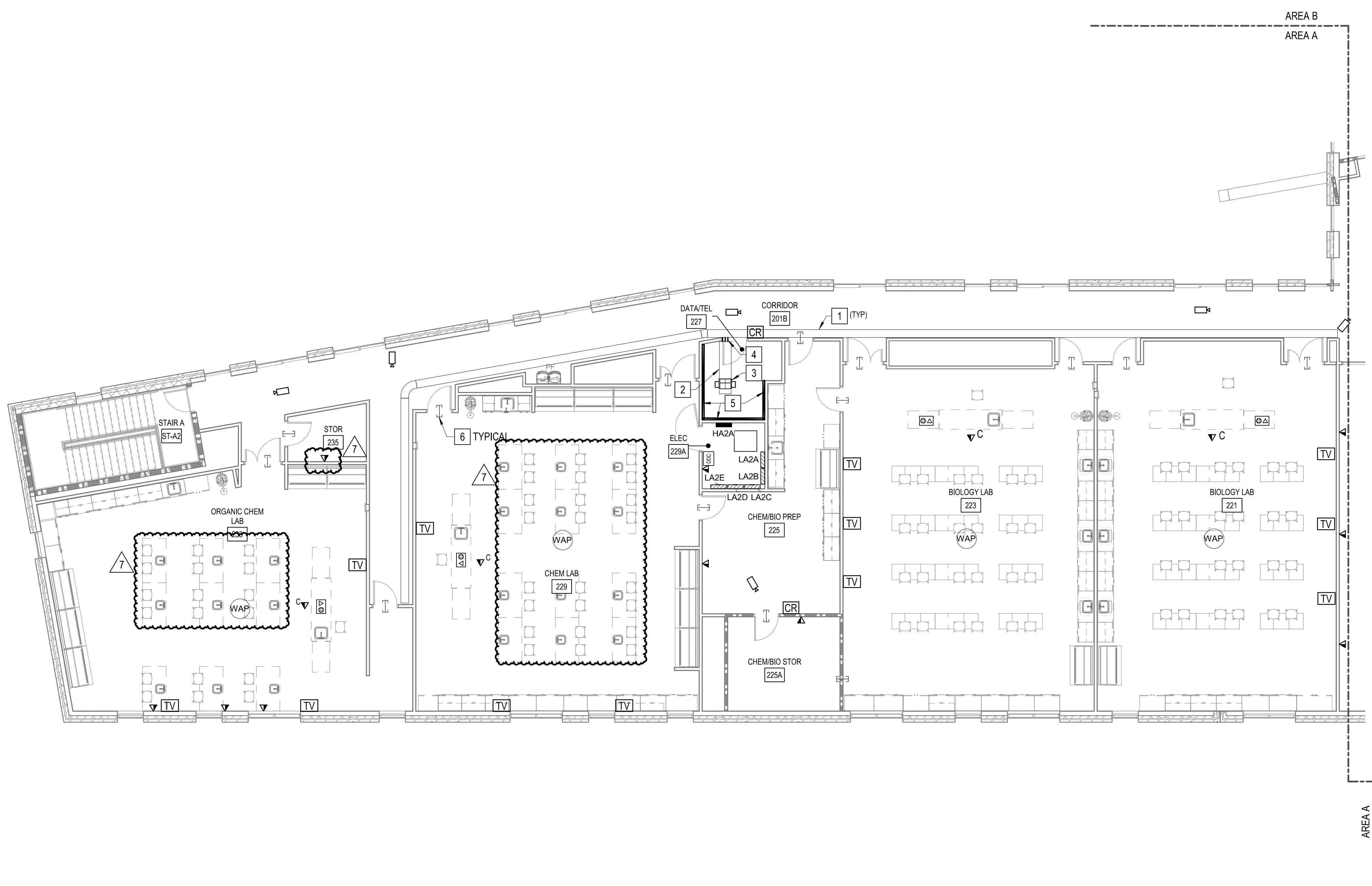
E

D

C

B

A

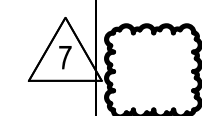


GENERAL NOTES

- A. OUTLET AND EQUIPMENT LOCATIONS ARE SHOWN FOR REFERENCE. COORDINATE WITH BRCC IT DEPT. AND ARCHITECT FOR FINAL LOCATIONS OF DEVICES AND VOICE/DATA OUTLETS.
- B. CABLES CONTAINED IN CABLE TRAYS NEED NOT BE IN CONDUIT EXCEPT FIBER OPTIC CABLES, WHICH SHALL BE IN INNERDUCT.
- C. COORDINATE WITH OTHER TRADES PLANS PRIOR TO INSTALLING CABLE TRAY TO ENSURE OF NO EQUIPMENT CONFLICTS.
- D. FIRESEAL ALL WALL AND FLOOR PENETRATIONS WITH UL LISTED FIRE SEALANT.
- E. SEE DETAIL 9 ON ET501 FOR INTERCONNECTIVITY RACEWAYS BETWEEN FLOORBOXES, TV BOXES, PROJECTORS, AND CEILING MOUNTED DATA OUTLETS.

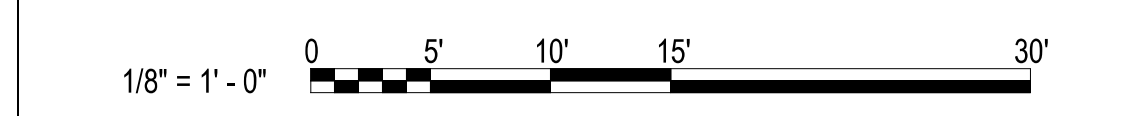
KEY NOTES

- 1 PROVIDE TELECOM 12" WIRE MESH CABLE TRAY ABOVE CEILING AS SHOWN.
- 2 PROVIDE 18" X 6" TELECOM LADDER TRAY ABOVE CEILING AS SHOWN.
- 3 PROVIDE 19" FLOOR MOUNTED TELECOM RACK.
- 4 PROVIDE (4) 4" CONDUIT SLEEVE(S) ABOVE CEILING TO CABLE TRAY ABOVE CORRIDOR. ALL BENDS SHALL BE LARGE RADIUS SWEEPING BENDS.
- 5 PROVIDE FIRE RETARDANT DOUBLE COATED 8'X4' PLYWOOD BACKBOARD AS SHOWN.
- 6 PROVIDE (2) 2" CONDUIT SLEEVE WITH NYLON BUSHINGS ABOVE ACCESSIBLE CEILING. TYPICAL FOR ALL LOCATIONS SHOWN ON PLANS.



1 SPECIAL SYSTEMS FLOOR PLAN - LEVEL 2 - AREA A
1/8" = 1'-0"

GRAPHIC SCALE(S)



HENDERSON COUNTY AND BLUE RIDGE
COMMUNITY COLLEGE
**BRCC - PATTON HALL
INTERIOR RENOVATION
AND ADDITION**
180 W CAMPUS DR.
FLAT ROCK, NC 28731



DESIGNER

CLARK NEXSEN

301 College Street, Suite 300
Asheville, North Carolina 28801
828-232-0606
www.clarknexsen.com

SEALS



SUBMITTAL

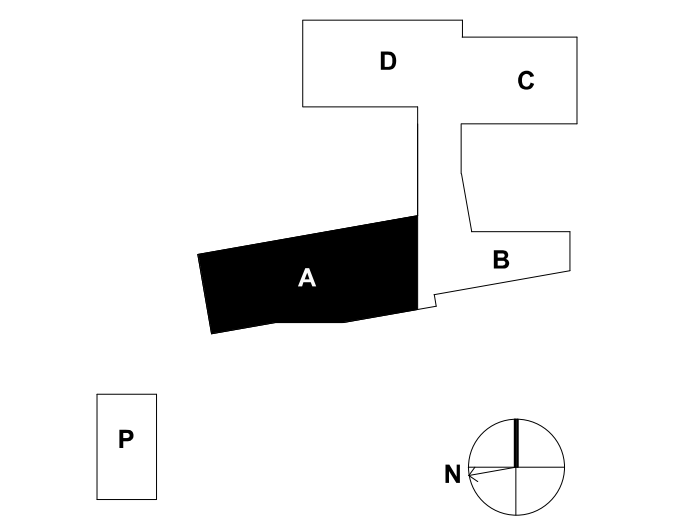
10/19/20

CONSTRUCTION DOCUMENTS

REVISIONS

1	11/20/20	ADDENDUM 1
7	05/12/21	Early Childhood

KEY PLAN



SHEET

SPECIAL SYSTEMS FLOOR PLAN - LEVEL 2 - AREA A

ET106

DESIGN: MRB
DRAWN: SJB
REVIEW: SPS

CN 5199-L



1 SPECIAL SYSTEMS FLOOR PLAN - LEVEL 2 - AREA B
1/8" = 1'-0"

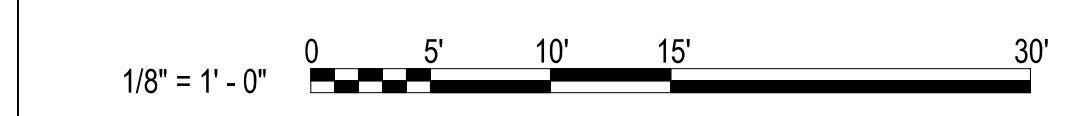
6 GENERAL NOTES

- A. OUTLET AND EQUIPMENT LOCATIONS ARE SHOWN FOR REFERENCE. COORDINATE WITH BRCC IT DEPT. AND ARCHITECT FOR FINAL LOCATIONS OF DEVICES AND VOICE/DATA OUTLETS.
- B. CABLES CONTAINED IN CABLE TRAYS NEED NOT BE IN CONDUIT EXCEPT FIBER OPTIC CABLES, WHICH SHALL BE IN INNERDUCT.
- C. COORDINATE WITH OTHER TRADE PLANS PRIOR TO INSTALLING CABLE TRAY TO ENSURE OF NO EQUIPMENT CONFLICTS.
- D. FIRESEAL ALL WALL AND FLOOR PENETRATIONS WITH UL LISTED FIRE SEALANT.
- E. CONTRACTOR TO PROVIDE AN IN-BUILDING RADIO SIGNAL AMPLIFICATION SYSTEM (IBEC) TO PROVIDE COMPLETE COVERAGE IN THE BUILDING FOR THE PUBLIC SAFETY AGENCIES AS REQUIRED BY THE LOCAL AHJ THAT MEETS THE CURRENT NFPA 72, IFC 510.2 AND ALL LOCAL CODES AND ORDINANCES. SEE SPECIFICATIONS FOR PERFORMANCE SPEC.

KEY NOTES

- 1 PROVIDE TELECOM 12" WIRE MESH CABLE TRAY ABOVE CEILING AS SHOWN.
- 2 PROVIDE 18" X 6" TELECOM LADDER TRAY ABOVE CEILING AS SHOWN.
- 3 PROVIDE 19" FLOOR MOUNTED TELECOM RACK.
- 4 PROVIDE (4) 4" CONDUIT SLEEVE(S) ABOVE CEILING TO CABLE TRAY ABOVE CORRIDOR. ALL BENDS SHALL BE LARGE RADIUS SWEEPING BENDS.
- 5 PROVIDE FIRE RETARDANT DOUBLE COATED 8'X4' PLYWOOD BACKBOARD AS SHOWN.
- 6 ROUTE (2) 2" CONDUITS FROM DATA ROOM TO UNDERSIDE OF ROOF DECKING FOR IBEC. SEE GENERAL NOTE E ABOVE FOR MORE INFORMATION.
- 7 PROVIDE (2) 2" CONDUIT SLEEVE WITH NYLON BUSHINGS ABOVE ACCESSIBLE CEILING. TYPICAL FOR ALL LOCATIONS SHOWN ON PLANS.

GRAPHIC SCALE(S)



HENDERSON COUNTY AND BLUE RIDGE
COMMUNITY COLLEGE
**BRCC - PATTON HALL
INTERIOR RENOVATION
AND ADDITION**
180 W CAMPUS DR.
FLAT ROCK, NC 28731



DESIGNER

CLARK NEXSEN

301 College Street, Suite 300
Asheville, North Carolina 28801
828-232-0009
www.clarknexsen.com

SEALS



SUBMITTAL

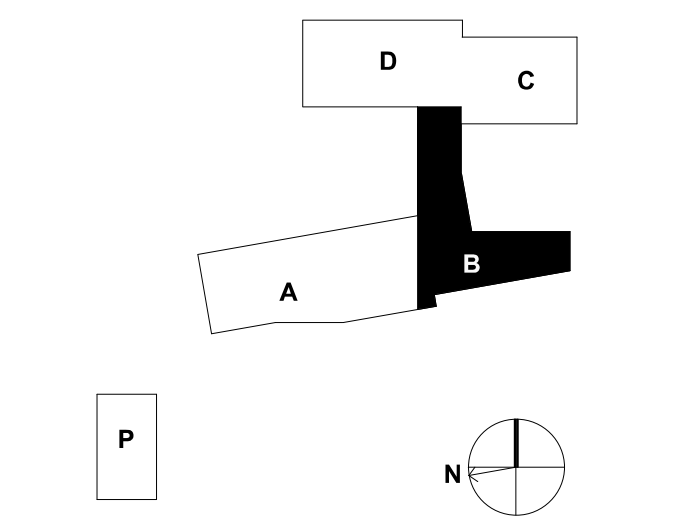
10/19/20

CONSTRUCTION DOCUMENTS

REVISIONS

NO.	DATE	DESCRIPTION
1	11/20/20	ADDENDUM 1
4	02/25/21	CONFORMED SET
7	05/12/21	Early Childhood

KEY PLAN



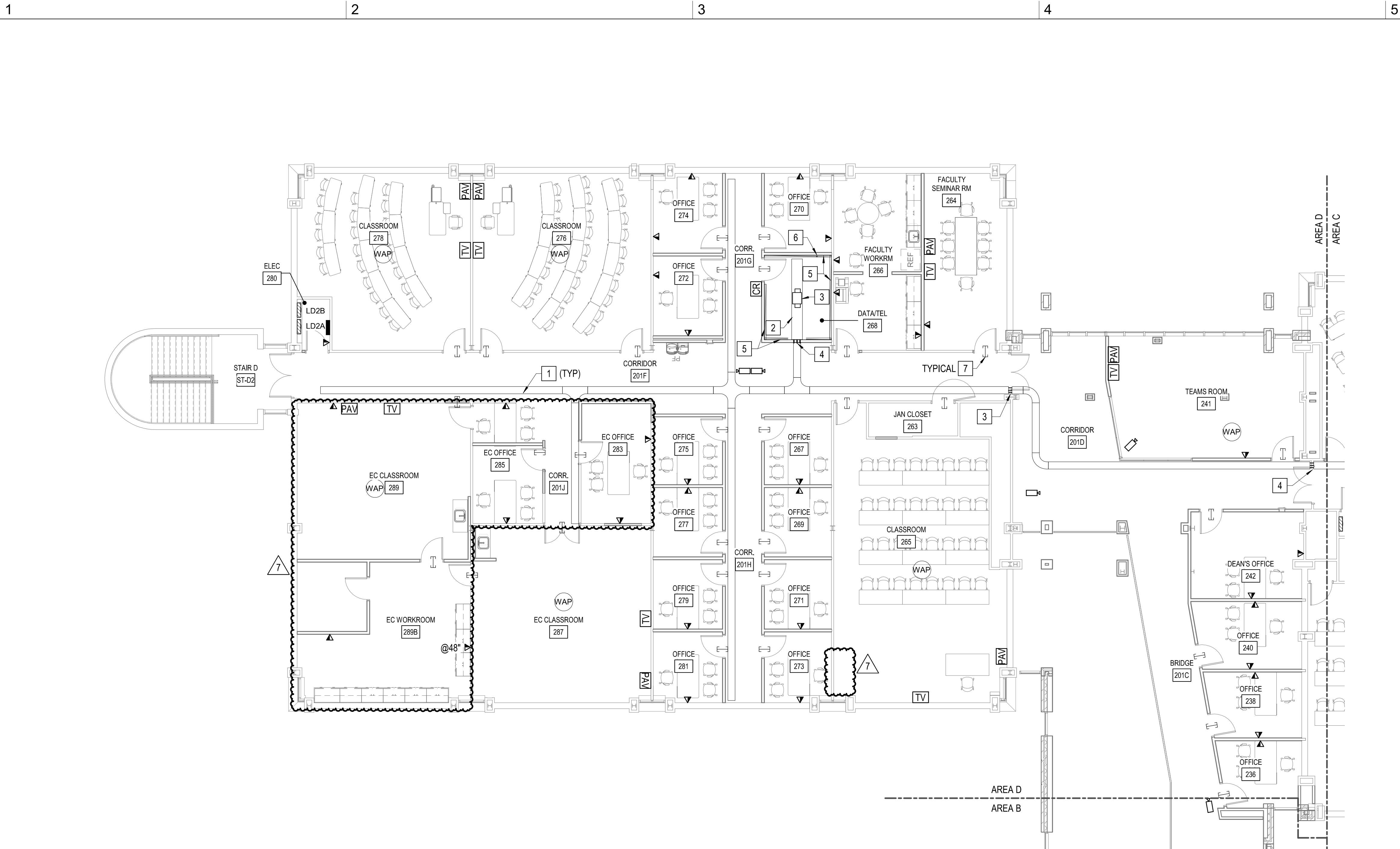
SHEET

SPECIAL SYSTEMS FLOOR
PLAN - LEVEL 2 - AREA B

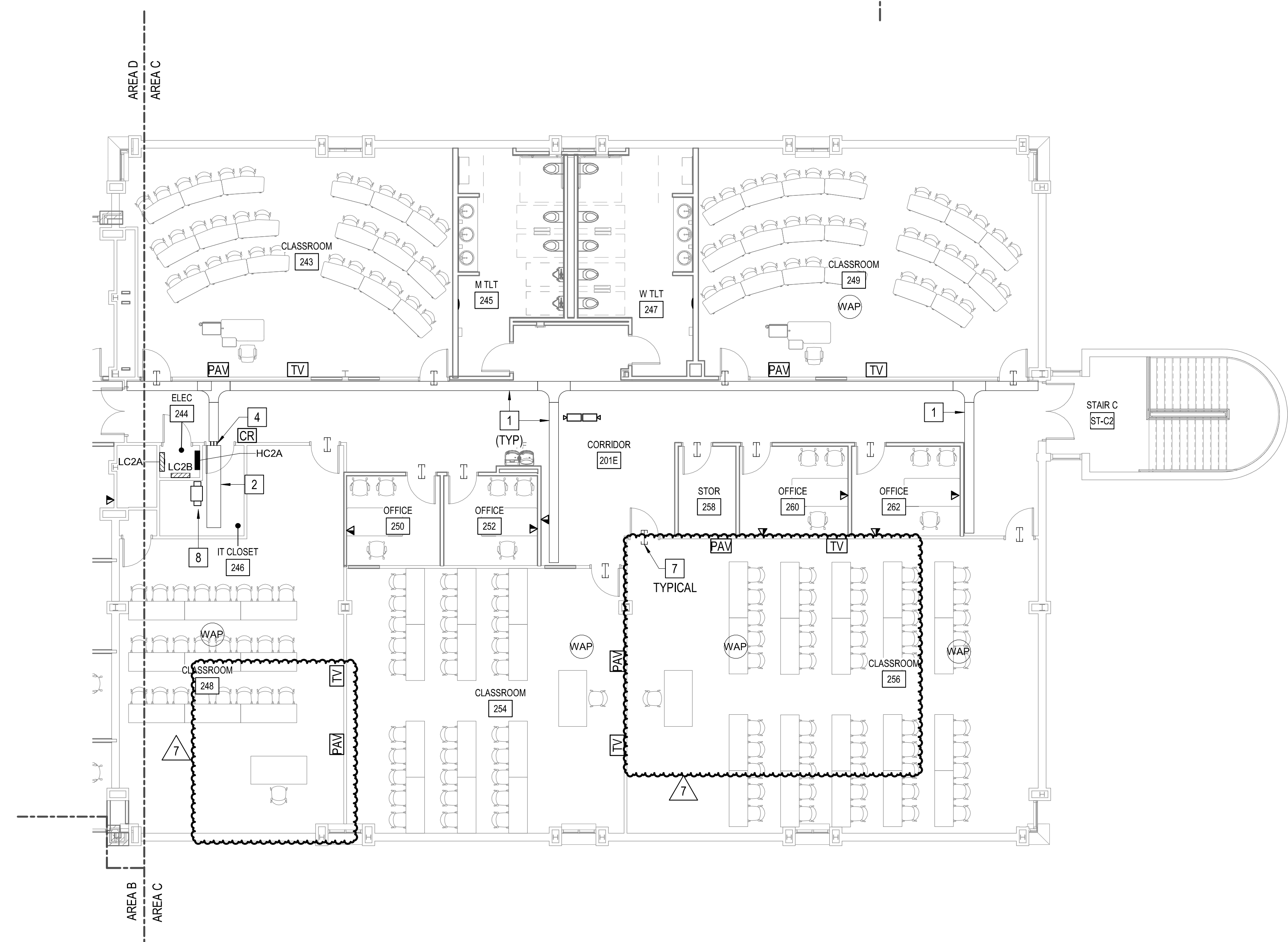
ET107

DESIGN: MRB
DRAWN: SJB
REVIEW: SPS

CN 5199-L



2 SPECIAL SYSTEMS FLOOR PLAN - LEVEL 2 - AREA D
1/8" = 1'-0"



1 SPECIAL SYSTEMS FLOOR PLAN - LEVEL 2 - AREA C
1/8" = 1'-0"

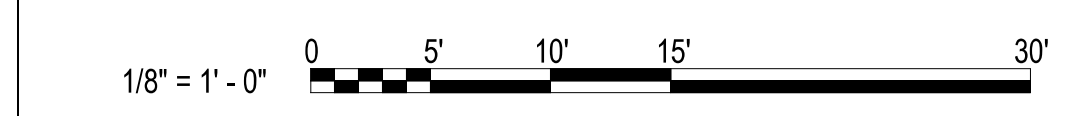
GENERAL NOTES

- A. OUTLET AND EQUIPMENT LOCATIONS ARE SHOWN FOR REFERENCE. COORDINATE WITH BRCC IT DEPT. AND ARCHITECT FOR FINAL LOCATIONS OF DEVICES AND VOICE/DATA OUTLETS.
- B. CABLES CONTAINED IN CABLE TRAYS NEED NOT BE IN CONDUIT EXCEPT FIBER OPTIC CABLES, WHICH SHALL BE IN INNERDUCT.
- C. COORDINATE WITH OTHER TRADE PLANS PRIOR TO INSTALLING CABLE TRAY TO ENSURE OF NO EQUIPMENT CONFLICTS.
- D. FIRESEAL ALL WALL AND FLOOR PENETRATIONS WITH UL LISTED FIRE SEALANT.
- E. CONTRACTOR TO PROVIDE AN IN-BUILDING RADIO SIGNAL AMPLIFICATION SYSTEM (IBEC) TO PROVIDE COMPLETE COVERAGE IN THE BUILDING FOR THE PUBLIC SAFETY AGENCIES AS REQUIRED BY THE LOCAL AHJ THAT MEETS THE CURRENT NFPA 72, IFC 510.2 AND ALL LOCAL CODES AND ORDINANCES. SEE SPECIFICATIONS FOR PERFORMANCE SPEC.
- F. SEE DETAIL 9 ON ET501 FOR INTERCONNECTIVITY RACEWAYS BETWEEN FLOORBOXES, TV BOXES, PROJECTORS, AND CEILING MOUNTED DATA OUTLETS.
- G. SEE DETAIL 9 ON ET501 FOR INTERCONNECTIVITY RACEWAYS BETWEEN FLOORBOXES, TV BOXES, PROJECTORS, AND CEILING MOUNTED DATA OUTLETS.

KEY NOTES

- 1. PROVIDE TELECOM 12" WIRE MESH CABLE TRAY ABOVE CEILING AS SHOWN.
- 2. PROVIDE 18" X 6" TELECOM LADDER TRAY ABOVE CEILING AS SHOWN.
- 3. PROVIDE 19" FLOOR MOUNTED TELECOM RACK.
- 4. PROVIDE (4) 4" CONDUIT SLEEVE(S) ABOVE CEILING TO CABLE TRAY ABOVE CORRIDOR. ALL BENDS SHALL BE LARGE RADIUS SWEEPING BENDS.
- 5. PROVIDE FIRE RETARDANT DOUBLE COATED 8'X4' PLYWOOD BACKBOARD AS SHOWN.
- 6. ROUTE (2) 2" CONDUITS FROM DATA ROOM TO UNDERSIDE OF ROOF DECKING FOR IBEC. SEE GENERAL NOTE E ABOVE FOR MORE INFORMATION.
- 7. PROVIDE (2) 2" CONDUIT SLEEVE WITH NYLON BUSHINGS ABOVE ACCESSIBLE CEILING. TYPICAL FOR ALL LOCATIONS SHOWN ON PLANS.
- 8. EXISTING TELECOM RACK.

GRAPHIC SCALE(S)



HENDERSON COUNTY AND BLUE RIDGE
COMMUNITY COLLEGE
**BRCC - PATTON HALL
INTERIOR RENOVATION
AND ADDITION**
180 W CAMPUS DR.
FLAT ROCK, NC 28731

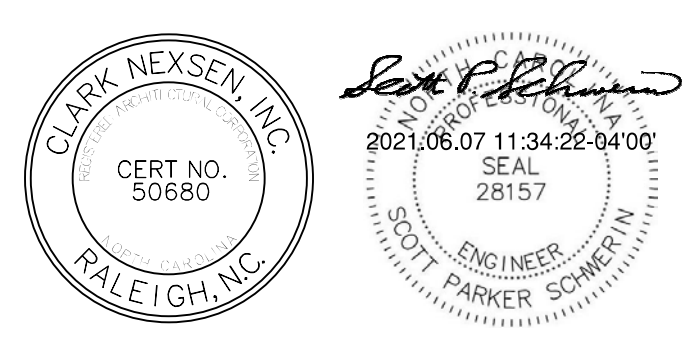


DESIGNER

CLARK NEXSEN

301 College Street, Suite 300
Asheville, North Carolina 28801
828-232-0009
www.clarknexsen.com

SEALS



SUBMITTAL

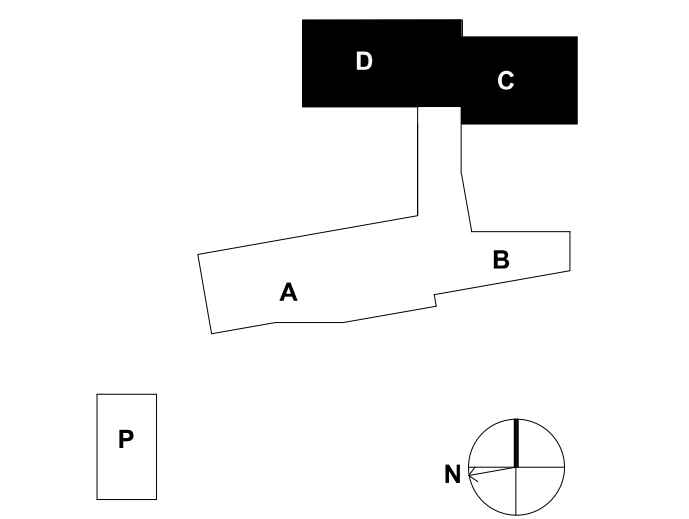
10/19/20

CONSTRUCTION DOCUMENTS

REVISIONS

NO.	DATE	DESCRIPTION
1	11/20/20	ADDENDUM 1
7	05/12/21	Early Childhood

KEY PLAN



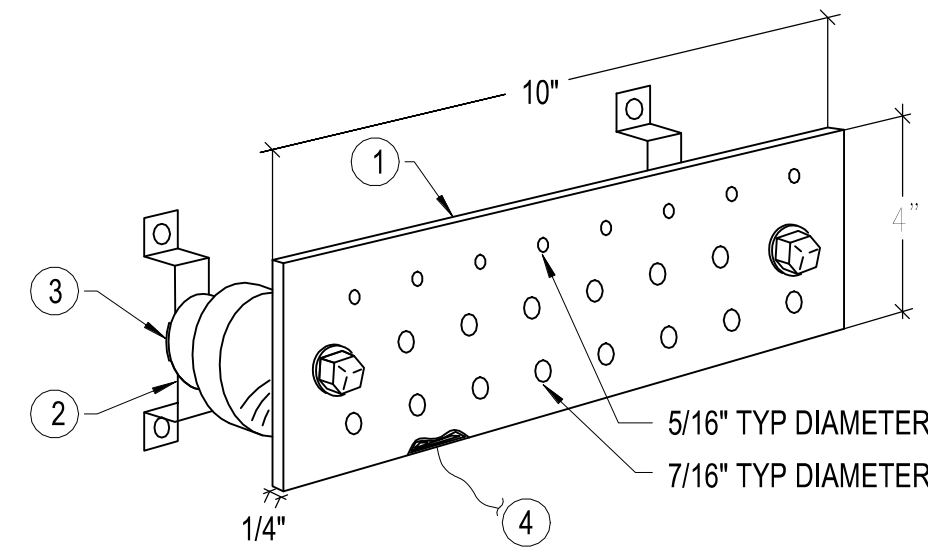
SHEET

**SPECIAL SYSTEMS FLOOR
PLAN - LEVEL 2 - AREA C & D**

ET108

DESIGN: MRB
DRAWN: SJB
REVIEW: SPS

CN 5199-L

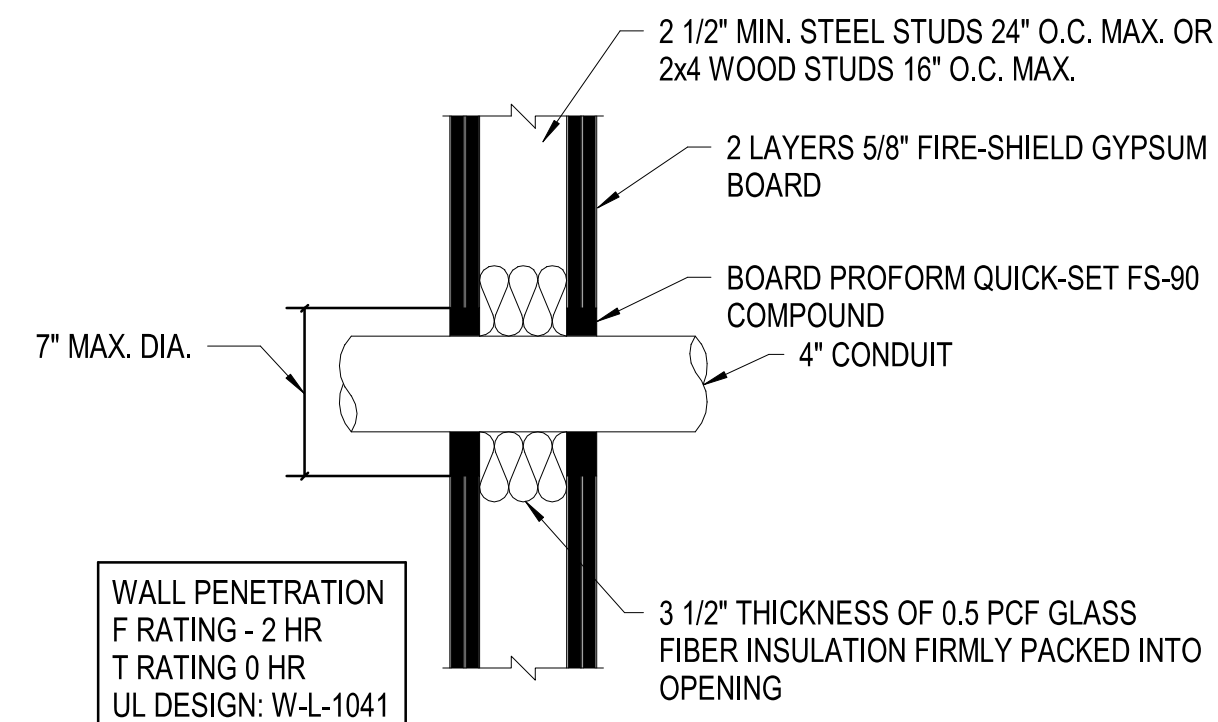


NOTES:

- ① ELECTRICAL & TELECOM ROOM COPPER GROUND BAR, 1/4" X 4" X 10", PER J-STD-607-A.
- ② STANDOFF BRACKET ASSEMBLY WITH INSULATORS, TYP FOR 2.
- ③ LOCK WASHER, TYP FOR 2.
- ④ A CONTINUOUS #3/0 GREEN INSULATED CONDUCTOR SHALL BE RUN FROM MAIN SYSTEM GROUND BAR (MSGB) TO MAIN TELECOM ROOM GROUND BAR (MTGB & TGB).

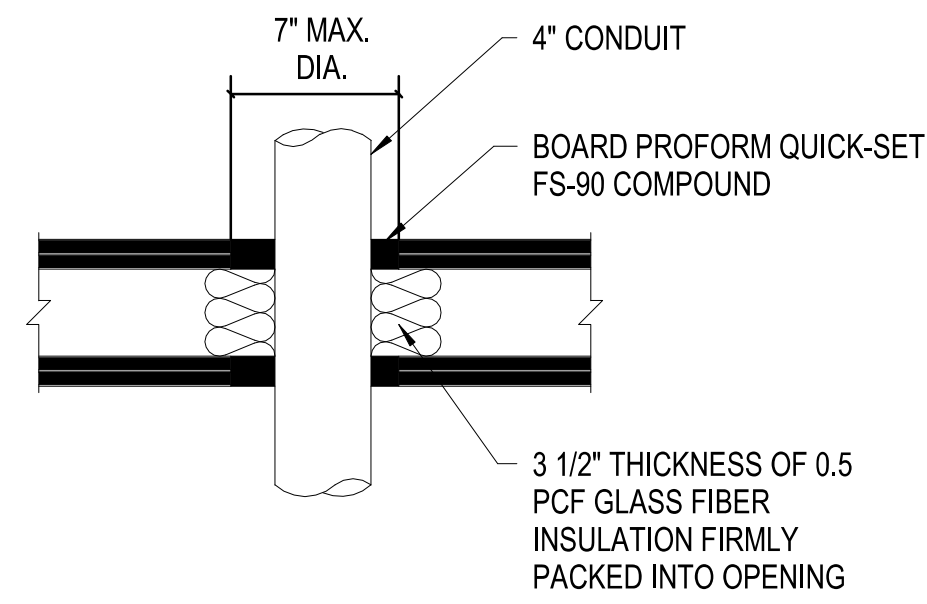
① GROUNDING BUSBAR

NOT TO SCALE



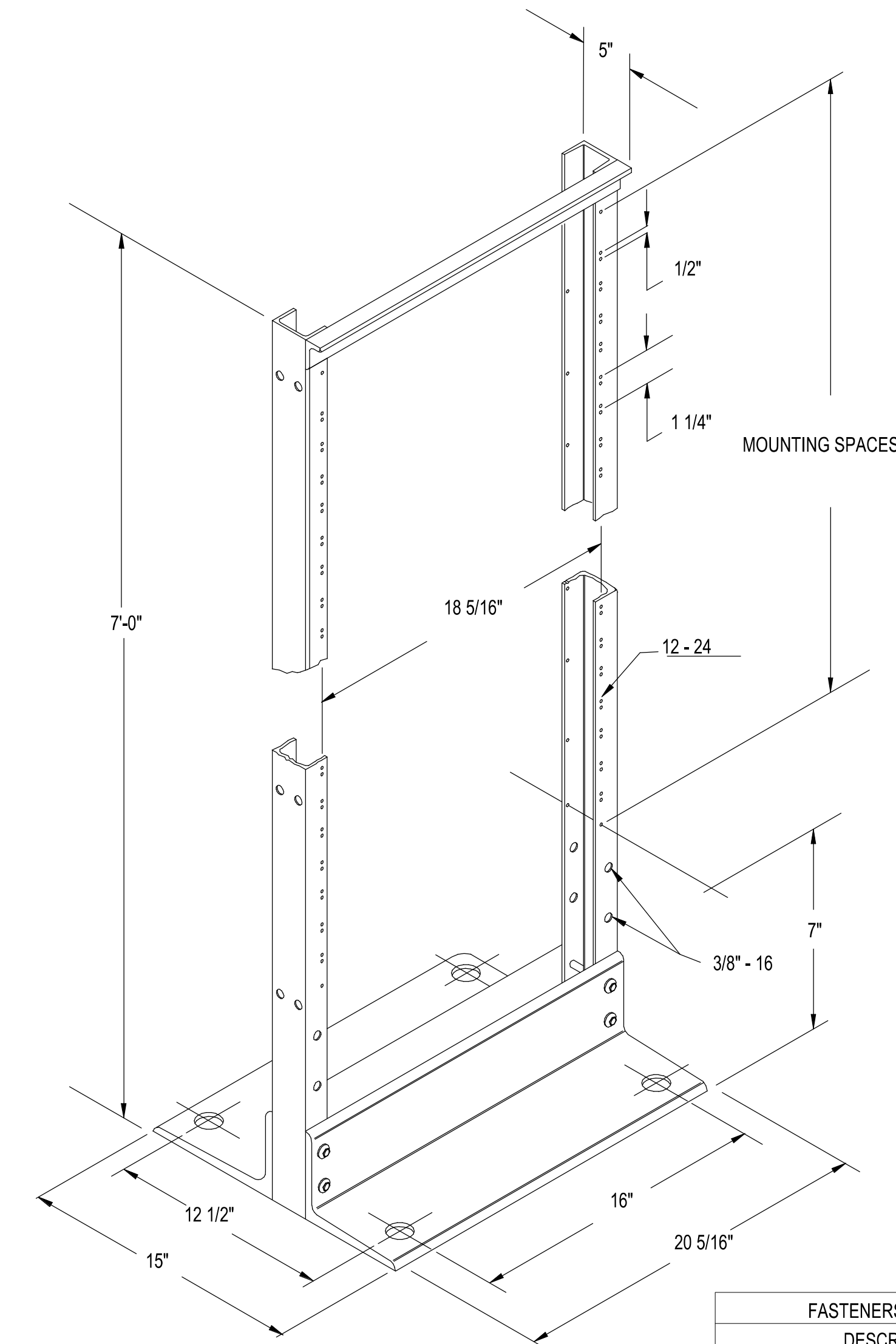
④ CONDUIT/SLEEVE PENETRATION THRU-WALL

NOT TO SCALE



⑤ CONDUIT/SLEEVE PENETRATION THRU-FLOOR

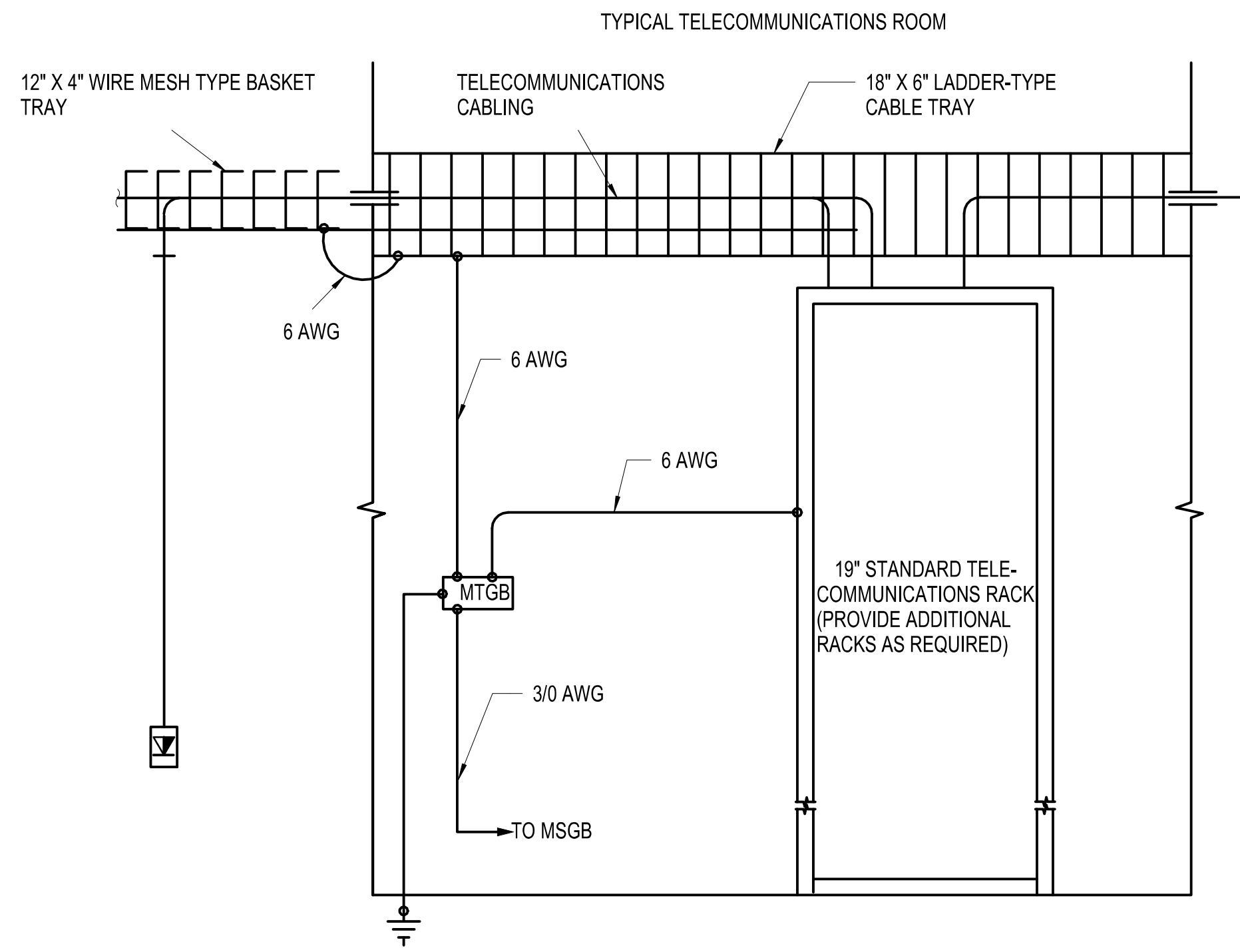
NOT TO SCALE



FASTENERS SUPPLIED	DESCRIPTION	
5/16"-18 X 4 1/2"	H.H.C.S.	
5/16"-18 X 1"	H.H.M.S.	
5/16"-18	HEX NUT	
5/16"	FLAT WASHER	
5/16"	LOCK WASHER	

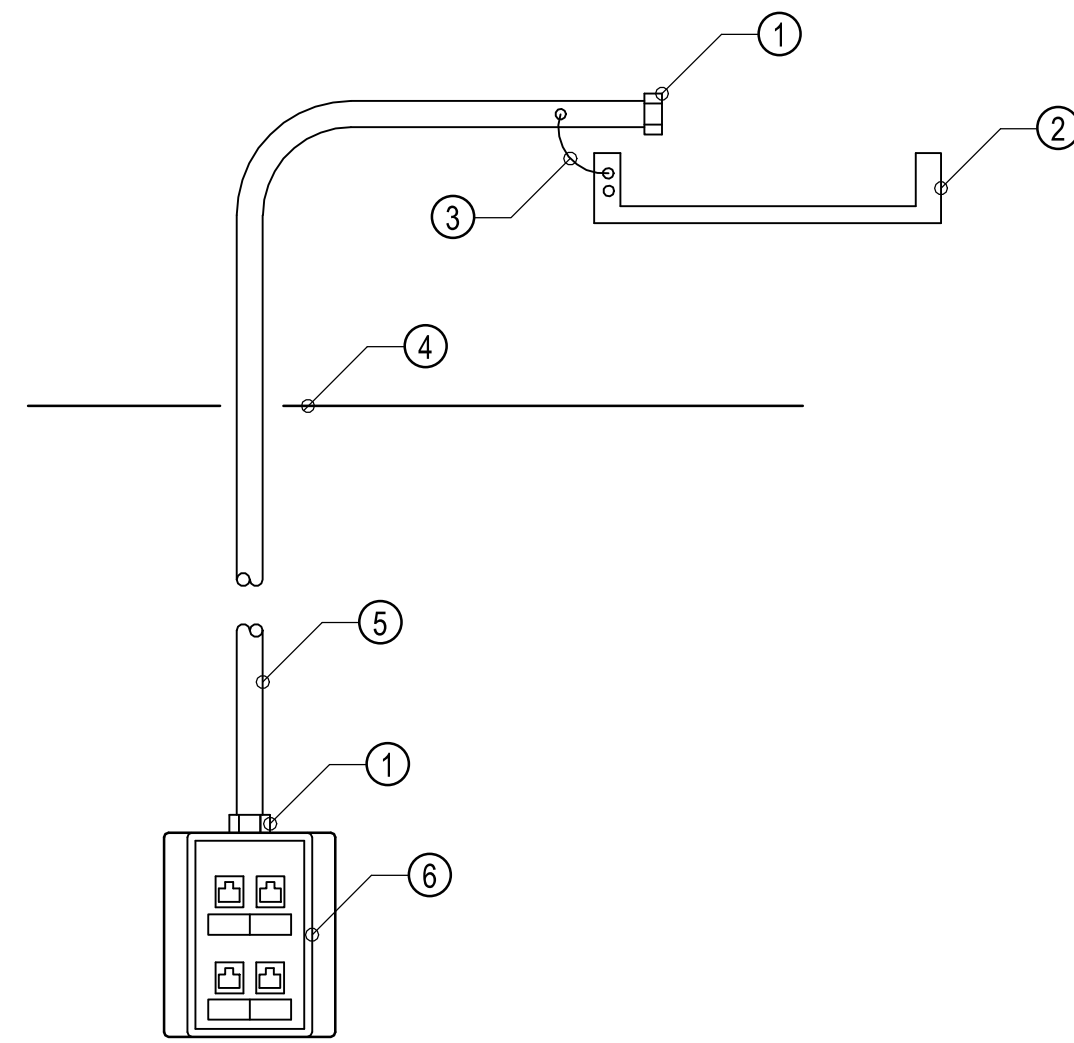
⑥ TELECOM RACK HARDWARE DETAIL

NOT TO SCALE



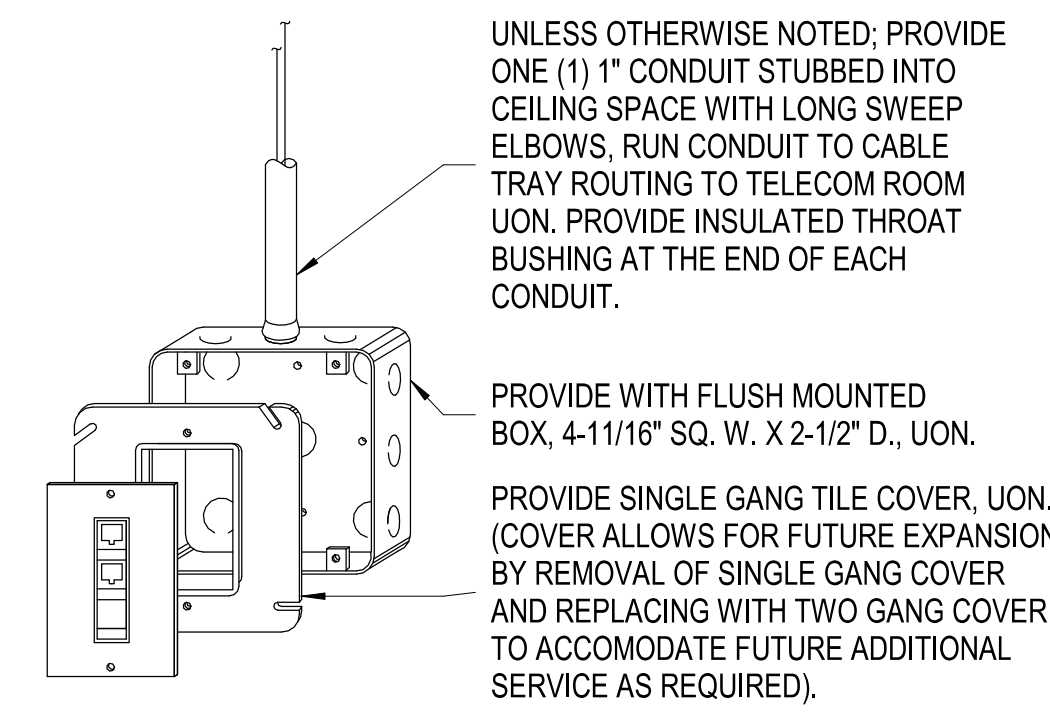
② SYSTEMS GROUNDING RISER DIAGRAM

NOT TO SCALE



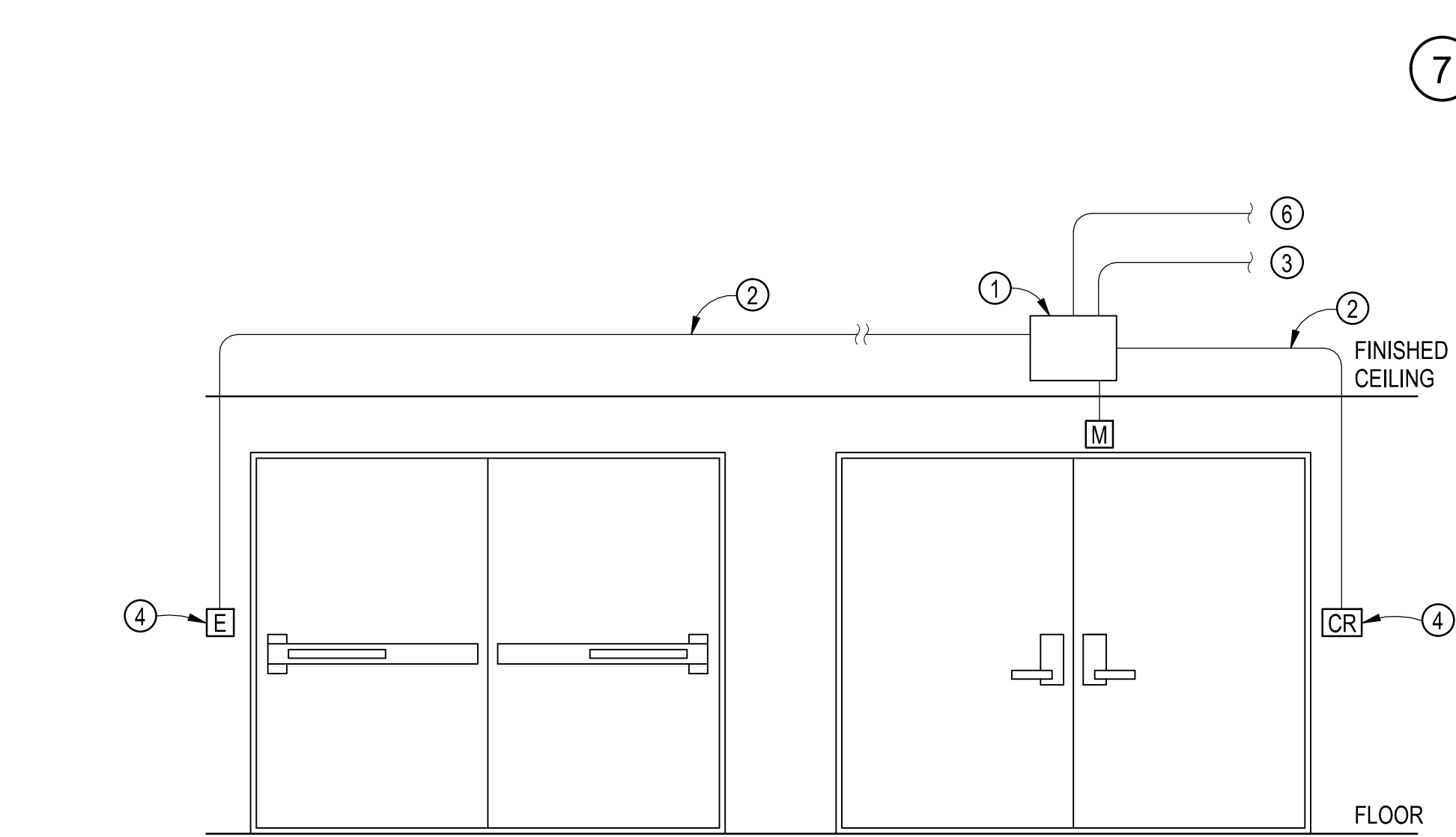
⑦ DATA/VOICE OUTLET & RACEWAY DETAIL

NOT TO SCALE



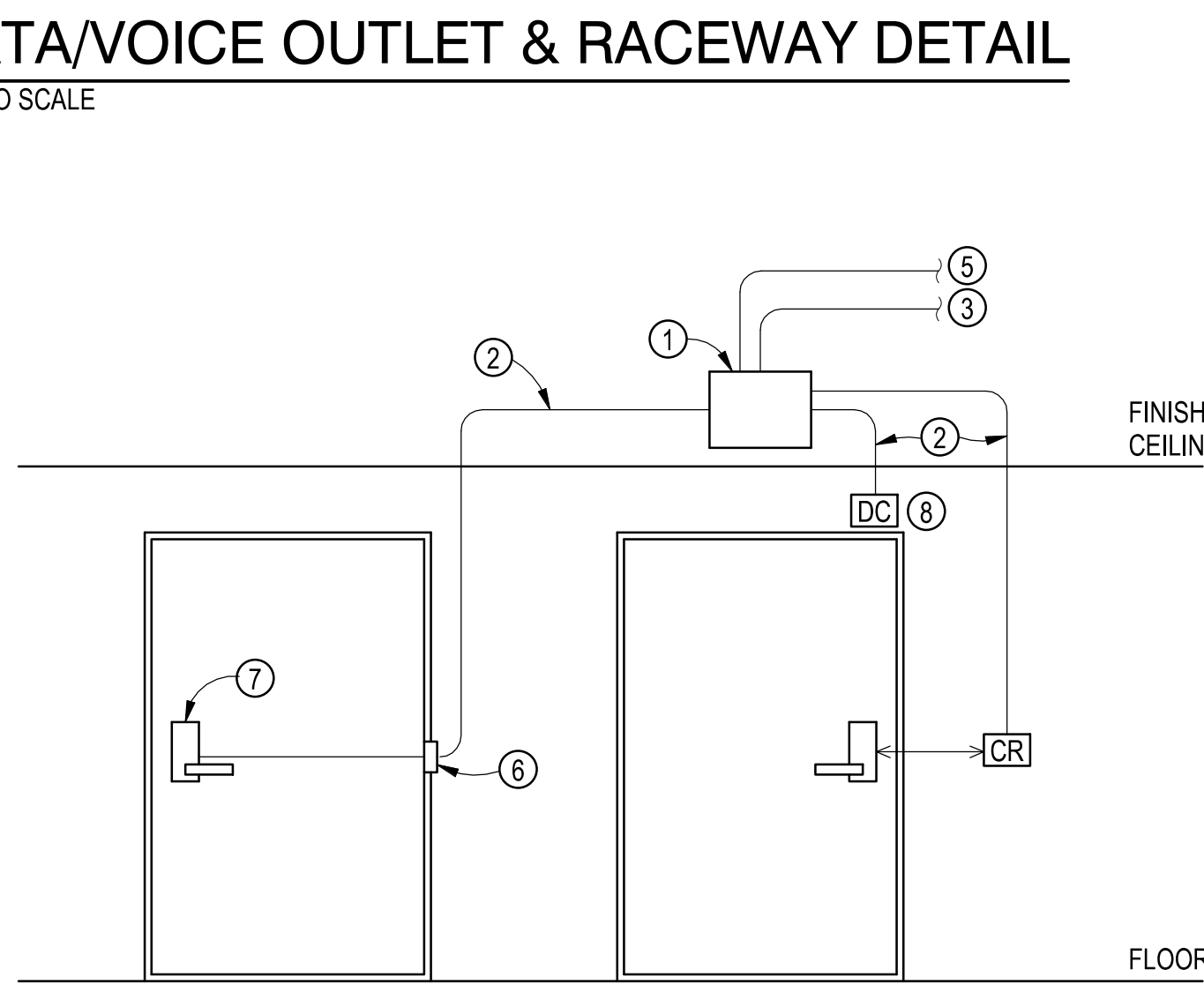
⑧ TELECOM DEVICE CONNECTION DETAIL

NOT TO SCALE



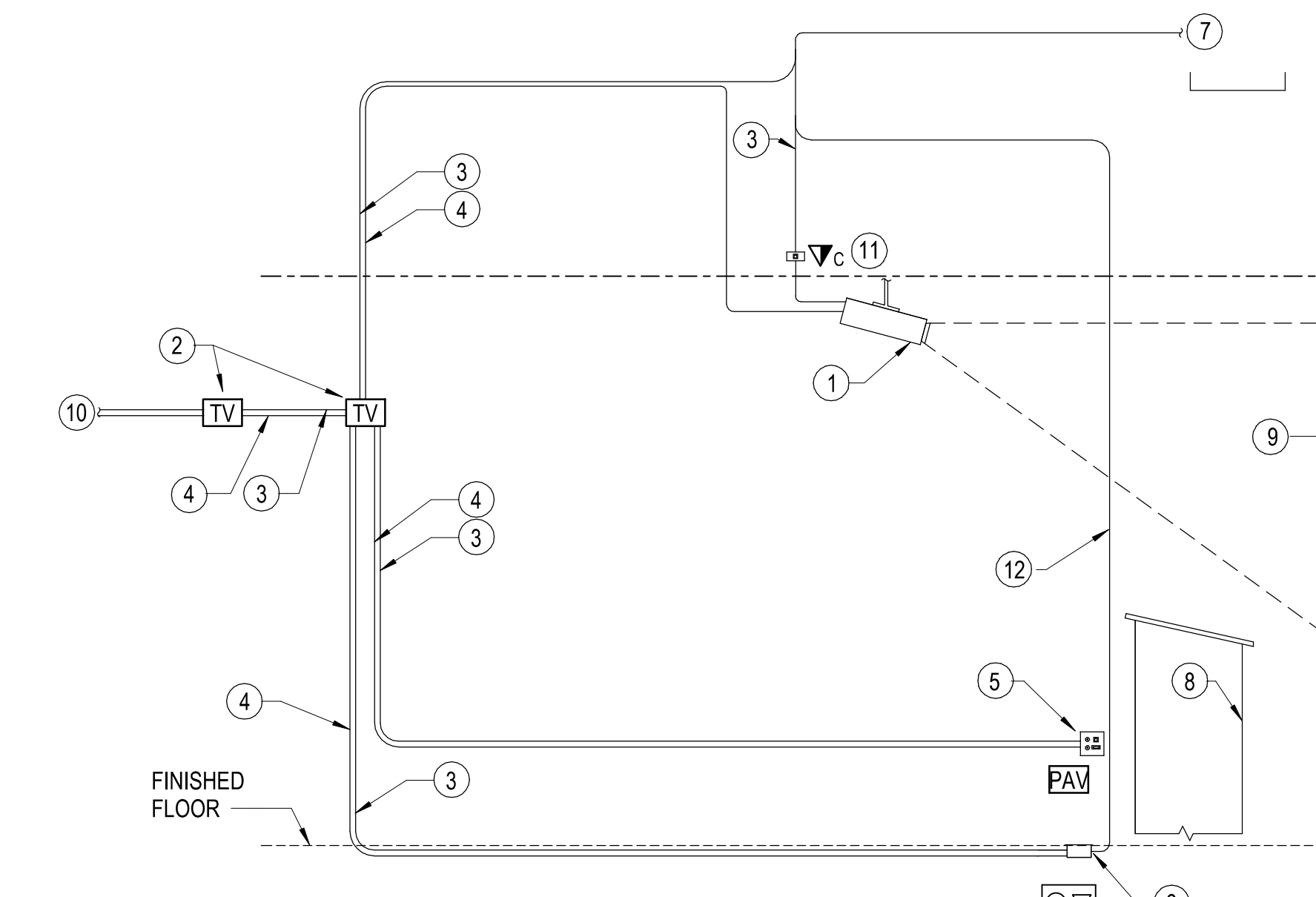
③ ACCESS CONTROL DETAIL

NOT TO SCALE



⑦ DATA/VOICE OUTLET & RACEWAY DETAIL

NOT TO SCALE



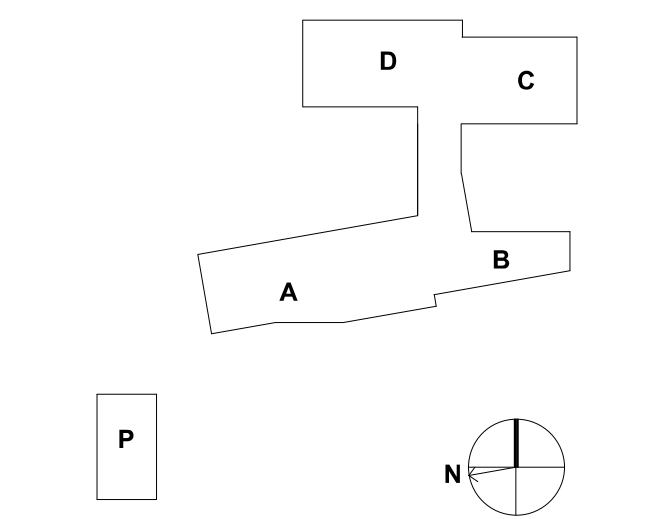
⑨ TYPICAL CLASSROOM TECHNOLOGY DETAIL

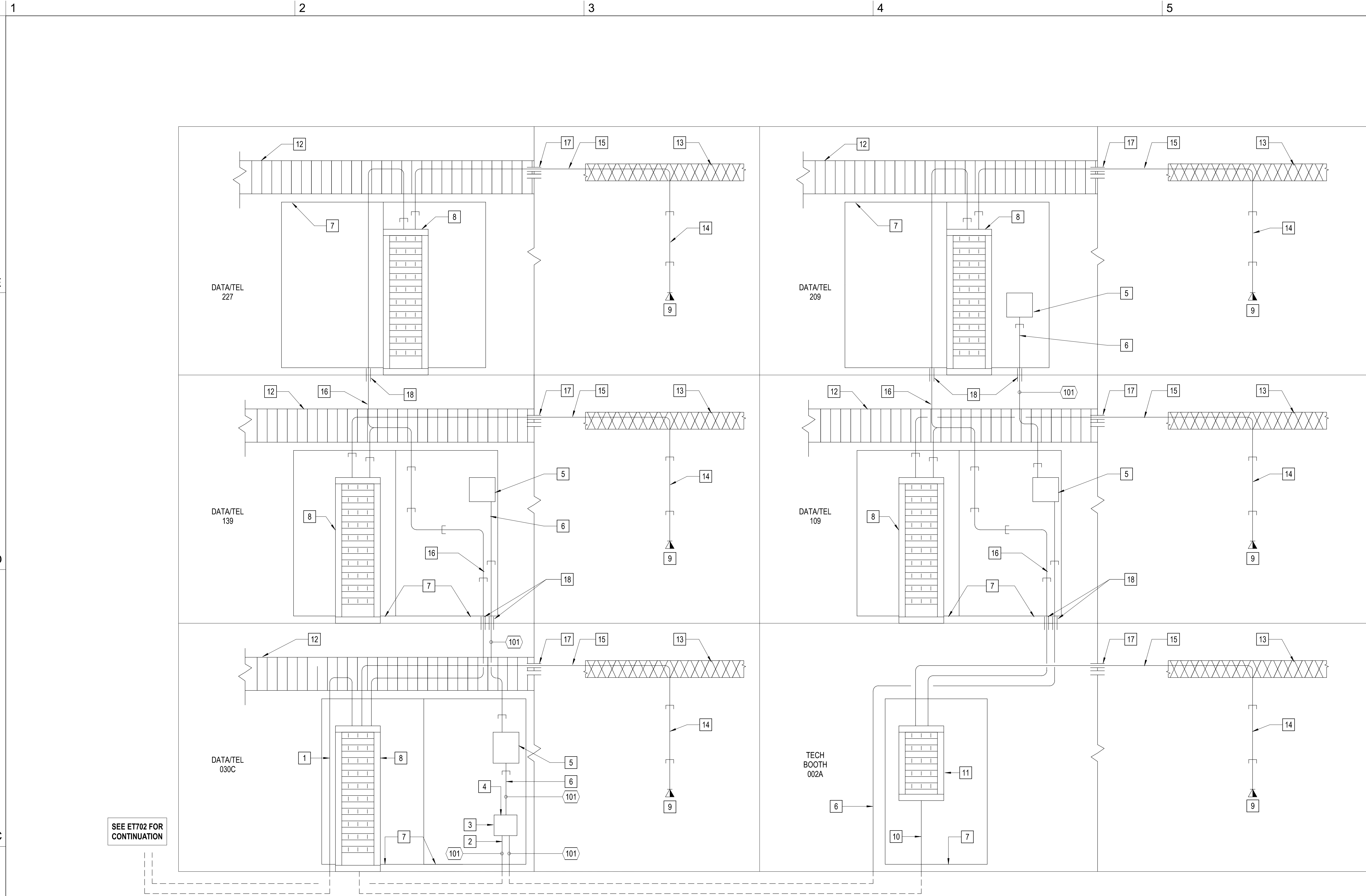
NOT TO SCALE

- # NOTES:**
(THIS DETAIL ONLY)
1. PROJECTOR, PROVIDED BY OWNER. NOT ALL CLASSROOMS HAVE PROJECTORS.
 2. PROVIDE TV BOX SIMILAR OR EQUAL TO FSR-PWB-250 WHERE SHOWN ON PLANS. SEE E-001 FOR MORE DETAILS.
 3. PROVIDE (1) 1 1/4" CONDUIT FOR DATA CABLES. ROUTING SHOWN FOR REFERENCE ONLY.
 4. PROVIDE (1) 1 1/4" CONDUIT FOR HDMI/AV CABLES. ROUTING SHOWN FOR REFERENCE ONLY.
 5. POWER/AV DATA OUTLET. PROVIDE FSR-PNB-203 OR APPROVED EQUAL NEAR PODIUM/TEACHERS DESK LOCATION PER PLANS. ONLY IN LOCATIONS WITHOUT A FLOOR BOX (PATTON BUILDING).
 6. PROVIDE DATA/POWER FLOOR RECEPTACLE WHERE SHOWN ON PLANS. (NONE IN EXISTING PATTON BUILDING) AND NOT ALL LOCATIONS IN NEW BUILDING). SEE E-001 FOR MORE DETAILS.
 7. DATA DROP FROM CABLE TRAY OUTSIDE ROOM. PROVIDE CONDUIT TO ABOVE CABLE TRAY.
 8. PODIUM/TEACHERS DESK.
 9. PROJECTOR SCREEN, PROVIDED BY OWNER.
 10. PROVIDE (2) 1 1/4" CONDUITS TO EACH TV BOX IN ROOM. REFER TO PLANS FOR TV BOX LOCATIONS.
 11. CEILING MOUNTED DATA/VOICE OUTLET. SEE E-001 FOR MORE DETAILS. SEE PLANS FOR LOCATIONS.
 12. ONLY PROVIDE (1) 1 1/4" CONDUIT FOR DATA CABLES FROM FLOOR BOX TO ABOVE CABLE TRAY IN ROOMS WHERE THERE IS NO TV BOX. IF THERE IS TV BOX THEN CONDUIT SHALL BE ROUTED TO TV BOX AND THEN TO ABOVE CABLE TRAY AS DEPICTED. ROUTING SHOWN FOR REFERENCE ONLY.
- GENERAL NOTES:**
(THIS DETAIL ONLY)
- A. DETAIL IS DIAGRAMATIC AND SHOWN FOR REFERENCE ONLY.
 - B. CONNECT/INSTALL EQUIPMENT PER MANUFACTURER'S RECOMMENDATION.
 - C. THIS DETAIL DOES NOT SHOW POWER CONNECTIONS OR CONDUIT FOR POWER CONNECTIONS. PROVIDE POWER CONNECTIONS WHERE REQUIRED AND AS SHOWN ON PLANS.
 - D. NOT ALL DEVICES/COMPONENTS SHOWN IN THIS DETAIL ARE IN EVERY CLASSROOM. TYPICALLY, CLASSROOMS EITHER HAVE A AV/ DATA OUTLET NEAR THE PODIUM OR A DATA/POWER FLOOR BOX NEAR THE PODIUM, NOT BOTH.
 - E. REFER TO PLANS FOR LOCATION OF ALL ITEMS.
 - F. FOR EXACT EQUIPMENT AND OUTLET LOCATIONS COORDINATE WITH ARCHITECT AND OWNER PRIOR TO ROUGH-IN.
 - G. BRANDS AND MODELS INDICATE BASIS OF DESIGN, APPROVED EQUALS ALSO ACCEPTED.

REVISIONS

NO.	DATE	DESCRIPTION
1	11/20/20	ADDENDUM 1
2	11/24/20	ADDENDUM 2
4	02/25/21	CONFORMED SET





1 TELECOM RISER DIAGRAM WINGS A & B
NOT TO SCALE

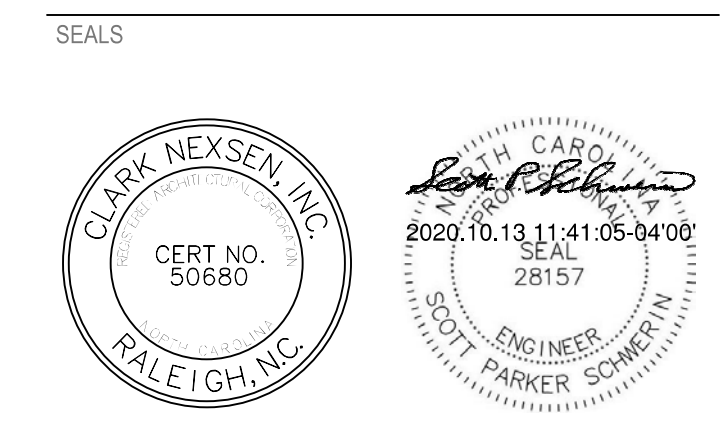
- GENERAL NOTES**
- A. ALL CABLES ROUTED UNDERGROUND BETWEEN BUILDINGS SHALL BE WATER-RESISTANT OF THE SAME TYPE LISTED IN THE TELECOM CABLES SCHEDULE.
- KEY NOTES**
- PROVIDE (2) 4" CONDUIT WITH (2) 4" DETECTABLE THREE-CELL TEXTILE INNER-DUCTS FROM EXISTING DATA/TEL 154F IN EXISTING PATTON BUILDING TO NEW DATA/TEL 030C. COORDINATE WITH BRCC FOR EXACT STUB UP LOCATIONS. SEE SITE PLAN SHEET ES102 FOR MORE INFORMATION.
 - PROVIDE (2) 4" CONDUIT WITH (2) 4" DETECTABLE THREE-CELL TEXTILE INNER-DUCTS FROM NEW TELE 154A IN EXISTING PATTON BUILDING TO NEW DATA/TEL 030C. COORDINATE WITH BRCC FOR EXACT STUB UP LOCATIONS. SEE SITE PLAN SHEET ES102 FOR MORE INFORMATION.
 - PROVIDE PROTECTION MODULE FOR 50-PAIR COPPER BACKBONE.
 - PROVIDE TERMINATION WITH BUSHING.
 - PROVIDE 50-PAIR PUNCH DOWN BLOCK IN CABINET.
 - PROVIDE (1) 3" CONDUIT FOR COPPER BACKBONE CABLE.
 - PROVIDE FIRE-RETARDANT DOUBLE-COATED 8x4' PLYWOOD BACKBOARD AS SHOWN ON SPECIAL SYSTEMS FLOOR PLANS.
 - PROVIDE 19" FLOOR MOUNTED TELECOM RACK AS SHOWN ON SPECIAL SYSTEMS FLOOR PLANS AND PER DETAILS 6 ON SHEET ET501.
 - TYPICAL DATA OUTLET SHOWN FOR REFERENCE. PROVIDE TELECOM JUNCTION BOX FLUSH WITH SURFACE PER DETAIL 8 ON SHEET ET501.
 - PROVIDE (2) 4" CONDUIT WITH (2) 4" DETECTABLE THREE-CELL TEXTILE INNER-DUCTS FROM NEW DATA/TEL 030C TO NEW TECH BOOTH 002A. COORDINATE WITH BRCC FOR EXACT STUB UP LOCATIONS.
 - PROVIDE 24"W X 26"D X 48"H WALL MOUNTED TELECOM RACK AS SHOWN ON SPECIAL SYSTEMS FLOOR PLAN ET102.
 - PROVIDE 18" X 6" LADDER-TYPE TELECOM CABLE TRAY AS SHOWN ON SPECIAL SYSTEMS FLOOR PLANS.
 - PROVIDE 12" X 4" WIRE-MESH TYPE TELECOM CABLE-TRAY AS SHOWN ON SPECIAL SYSTEMS FLOOR PLANS.
 - PROVIDE (1) 1" CONDUIT FROM TELECOM JUNCTION BOX TO ABOVE CABLE TRAY. SEE DETAIL 7 ON SHEET ET501.
 - DATA CABLING SHOWN FOR REFERENCE ONLY. ALL CABLING BY OWNER UNLESS OTHERWISE NOTED.
 - PROVIDE (2) 4" CONDUIT WITH (4) 1" INNERDUCTS FOR FIBER OPTIC CABLE(S). COORDINATE WITH BRCC FOR EXACT STUB UP LOCATIONS.
 - PROVIDE 4" FIRE STOP CONDUIT SLEEVES ABOVE CEILING (THROUGH WALLS) AS SHOWN ON SPECIAL SYSTEMS FLOOR PLANS. SEE DETAIL 4 ON SHEET ET501.
 - PROVIDE 4" FIRE STOP CONDUIT SLEEVES THROUGH FLOOR AS SHOWN. SEE DETAIL 5 ON SHEET ET501.
 - EXISTING TELEPHONE BACKBOARD TO REMAIN.
 - EXISTING AT&T FIBER AND COPPER SERVICE ENTRANCE IN METAL FLOOR BOX TO REMAIN.
 - EXISTING DATA RACK(S) TO REMAIN.
 - EXISTING CABLE RUN TO REMAIN.

TELECOM CABLES	
#	Description
101	ONE (1) VOICE 50-PAIR UTP 100-OHM CAT-5E 100MHZ (MIN) CMR.

HENDERSON COUNTY AND BLUE RIDGE
COMMUNITY COLLEGE
**BRCC - PATTON HALL
INTERIOR RENOVATION
AND ADDITION**
180 W CAMPUS DR.
FLAT ROCK, NC 28731



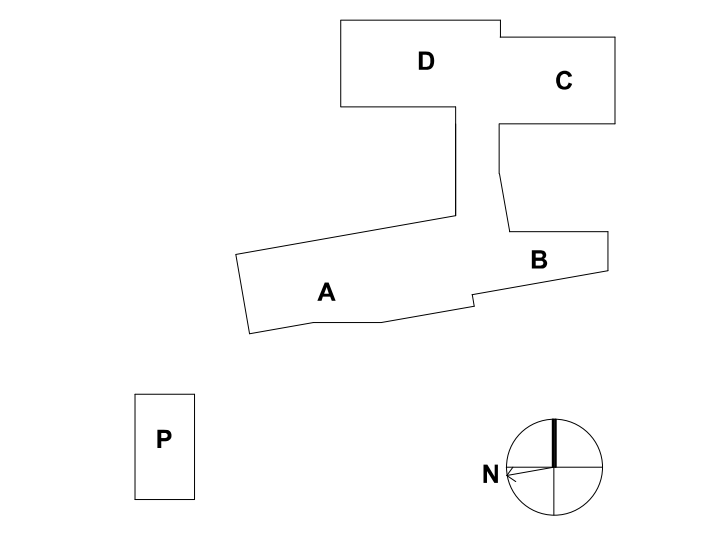
DESIGNER
CLARK NEXSEN
301 College Street, Suite 300
Asheville, North Carolina 28801
828-232-0009
www.clarknexsen.com



SUBMITTAL
10/19/20
CONSTRUCTION DOCUMENTS

REVISIONS

NO.	DESCRIPTION



SHEET
IT RISER DIAGRAM WINGS A & B

ET701

DESIGN: MRB
DRAWN: SJB
REVIEW: SPS
CN 5199-L

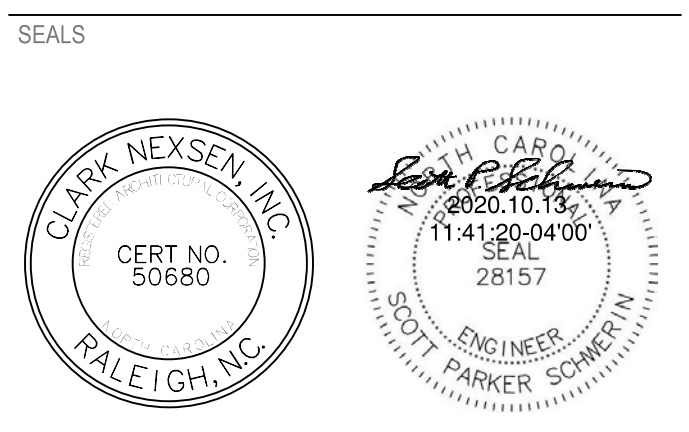
GENERAL NOTES

A. SEE SHEET ET701 FOR KEY NOTES, GENERAL NOTES AND TELECOM CABLES SCHEDULES.

HENDERSON COUNTY AND BLUE RIDGE COMMUNITY COLLEGE
BRCC - PATTON HALL
INTERIOR RENOVATION AND ADDITION
 180 W CAMPUS DR.
 FLAT ROCK, NC 28731

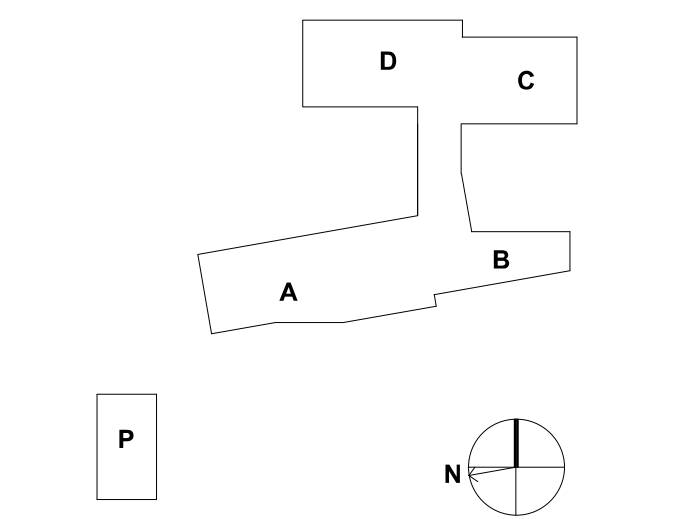


DESIGNER
CLARK NEXSEN
 301 College Street, Suite 300
 Asheville, North Carolina 28801
 828-232-0009
 www.clarknexsen.com



SUBMITTAL
 10/19/20
CONSTRUCTION DOCUMENTS

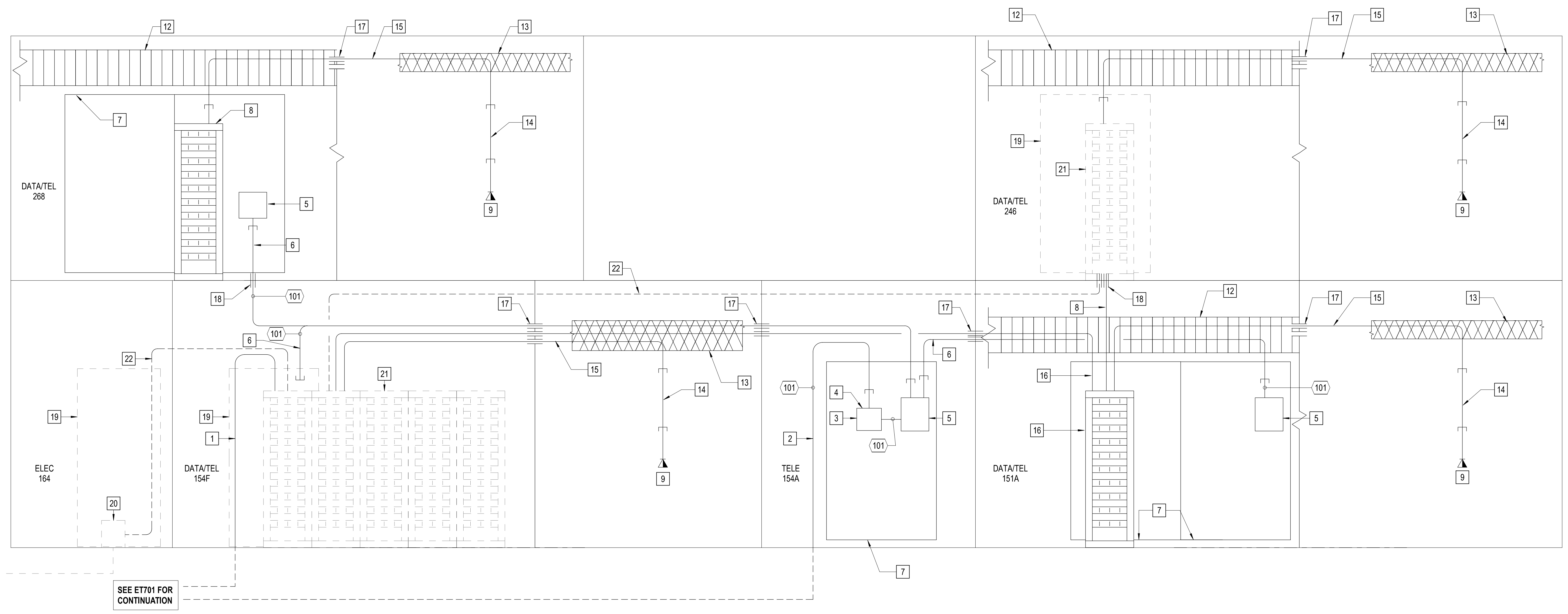
REVISIONS



SHEET
IT RISER DIAGRAM WINGS C & D

ET702

DESIGN: Designer
 DRAWN: Author
 REVIEW: Checker
CN 5199-L



1 TELECOM RISER DIAGRAM WINGS C & D
 NOT TO SCALE

10/13/2020 12:21:36 AM
 C:\rent\Projects\1994-1800-ET702_1994-1800-ET702.dwg