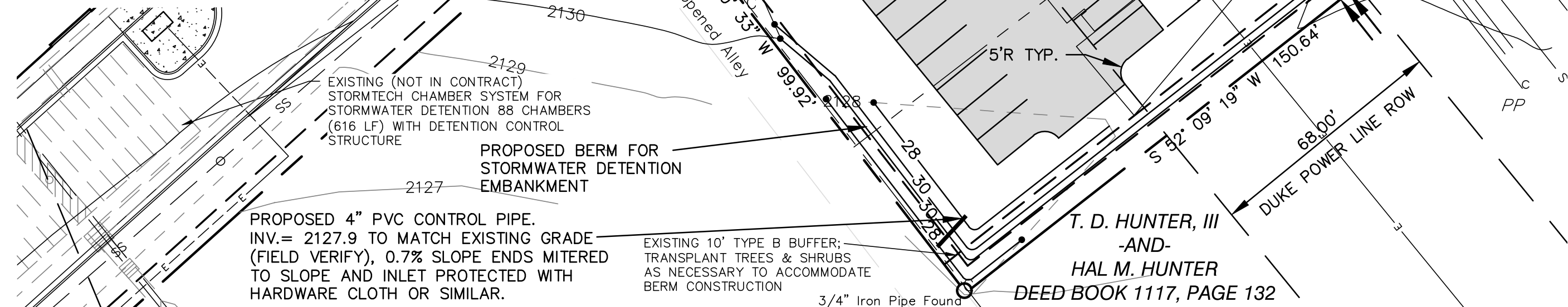


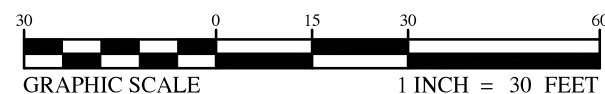
- NOTES:**
1. FINISHED PAVEMENT SURFACE TO MATCH EXISTING GROUND SURFACE.
 2. PAVEMENT SECTION: 2" SF 9.5A SURFACE COURSE TO MEET REQUIREMENTS IN LATEST EDITION SUPERPAVE HOT MIX ASPHALT/QUALITY MANAGEMENT SYSTEM OF THE NORTH CAROLINA DEPARTMENT OF TRANSPORTATION PAVEMENT CONSTRUCTION SECTION, 8" CABC 100% STANDARD PROCTOR.
 3. BERM MUST BE SEEDDED WITH BERMUDAGRASS, TALL FESCUE, BAHIA GRASS, KENTUCKY BLUEGRASS, OR A COMBINATION THEREOF TO RESIST STORM WATER EROSION. PHOTO-DEGRADABLE MATTING TO BE USED IN CONJUNCTION WITH SEEDING.

NOTATIONS CHART

ENTIRE SITE AREA = 6.67 AC. (290,545 SF)		
DESCRIPTION	SQUARE FEET	PERCENTAGE
SITE COVERAGE-BUILDINGS	49,000	16.9%
SITE COVERAGE-OPEN SPACE	109,943	37.8%
SITE COVERAGE-STREETS & PARKING	131,602	45.3%
PARKING SPACES: EXISTING 292 NEW 24 TOTAL 316		



PLAN



NO.	DATE	BY	REVISION DESCRIPTION
1	10/01/09	RHH	REVISED PER HENDERSON COUNTY COMMENTS