



NOTES

1. FINISHED PAVEMENT SURFACE TO MATCH EXISTING GROUND SURFACE.
2. PAVEMENT SECTION: 2" SF 0.5A SURFACE COURSE TO MEET REQUIREMENTS IN LATEST EDITION SUPERPAVE HOT MIX ASPHALT/QUALITY MANAGEMENT SYSTEM OF THE NORTH CAROLINA DEPARTMENT OF TRANSPORTATION PAVEMENT CONSTRUCTION SECTION, 8" CABC 100% STANDARD PROCTOR.
3. BERM MUST BE SEEDED WITH BERMUDAGRASS, TALL FESCUE, BAHIA GRASS, KENTUCKY BLUEGRASS, OR A COMBINATION THEREOF TO RESIST STORM WATER EROSION. PHOTO-DEGRADABLE MATTING TO BE USED IN CONJUNCTION WITH SEEDING.

NOTATIONS CHART

ENTIRE SITE AREA = 8.67 AC. (380,545 SF)		
DESCRIPTION	SQUARE FEET	PERCENTAGE
SITE COVERAGE-BUILDINGS	49,000	18.0%
SITE COVERAGE-OPEN SPACE	109,843	37.8%
SITE COVERAGE-STREETS & PARKING	131,602	40.3%
PARKING SPACES: EXISTING 292 NEW 24 TOTAL 316		

Please note that the modifications to the stormwater system shown in this revision do not represent a significant deviation from the stormwater plan approved September 24, 2009 and therefore that approval remains effective for these modifications.

Brandon Shanahan

Brandon Shanahan, PE
Civil Engineer III

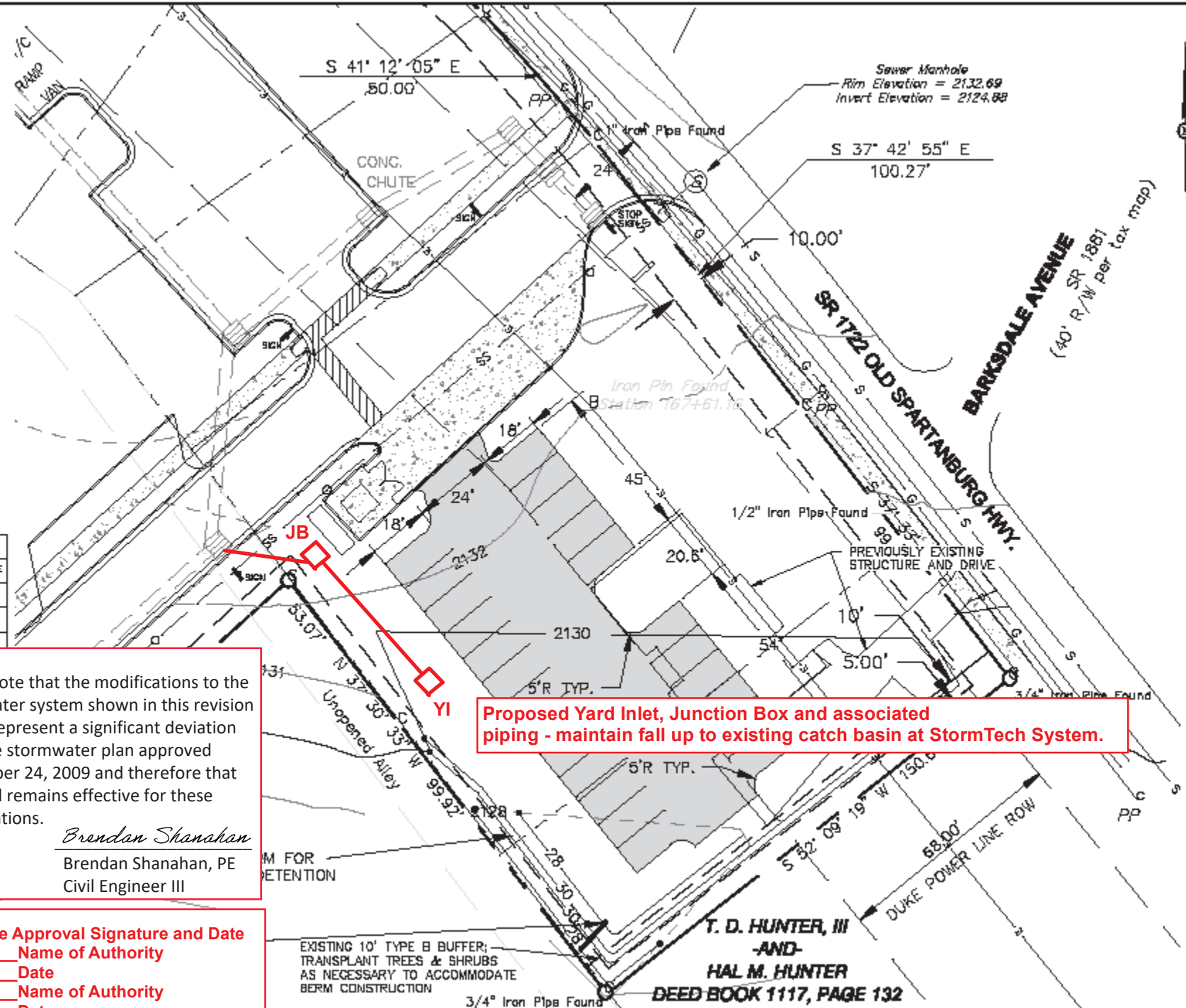
City of Hendersonville Approval Signature and Date

Name of Authority

Date

Name of Authority

Date



PLAN



NO.	DATE	BY	REVISION DESCRIPTION
1	10/01/09	BSH	REVISED PER HENDERSON COUNTY COMMENTS



HUMAN SERVICES BUILDING
AUXILIARY PARKING LOT
HENDERSON COUNTY
NORTH CAROLINA

STORM WATER PLAN

SHEET
SL-01