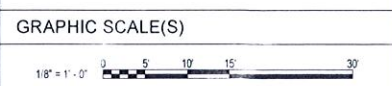


- GENERAL NOTES**
- REFER TO SHEET A-001 FOR RCP LEGEND.
 - REFER TO SHEETS A571 - A572 FOR CEILING DETAILS.
 - ALL CEILINGS ARE 10'-0" AFF. UON.
 - HVAC & LIGHTING FIXTURES SHOWN ARE FOR GRAPHICAL PURPOSES ONLY. GC TO REFER TO PAVE DRAWINGS AND SPRINKLER PIPING SHOP DRAWINGS AND SHOULD NOTIFY ARCHITECT IMMEDIATELY OF ANY CONFLICTS OR DISCREPANCIES.
 - GENERAL CONTRACTOR TO COORDINATE ALL SOFFIT, BULK-HEAD FRAMING WITH FINAL LIGHTING FIXTURES & HVAC DIFFUSER LOCATIONS.
 - GENERAL CONTRACTOR TO FIELD VERIFY CEILING HEIGHTS SHOWN ON RCP DRAWINGS PRIOR TO INSTALLATION OF ALL MECHANICAL DUCTWORK, SPRINKLER PIPING, ELECTRICAL EQUIPMENT, CONDUITS, ETC. ARCHITECT TO BE NOTIFIED IMMEDIATELY OF ANY DISCREPANCIES.
 - GENERAL CONTRACTOR TO INSTALL WIRE HANGERS @ ALL CORNERS OF LIGHT FIXTURES, REGISTERS, & GRILLES.
 - REFER TO INTERIOR & EXTERIOR SECTIONS FOR ADDITIONAL CEILING DETAILS NOT NOTED ON THIS SHEET.
 - ALL RECESSED LIGHTING SHALL BE CENTERED WITHIN THE SOFFIT DIMENSIONS, UON.
 - WHERE ACT IS LOCATED, ALL FIXTURES INCLUDING BUT NOT LIMITED TO MOTION DETECTORS, FIRE ALARM DEVICES, & SPRINKLER HEADS, ARE TO BE LOCATED IN THE CENTER OF THE TILE.
 - WHERE GWB SOFFITS SPAN LONGER THAN 30'-0", CONTROL JOINTS SHOULD BE LOCATED IN GWB SOFFIT EVERY 30'-0", ALIGN WITH CONTROL JOINTS IN GWB WALLS WHERE PRESENT.

- KEY NOTES**
- ACCESS PANEL - FINISH TO MATCH CEILING
 - ROLLER SHADE, N.I.C.
 - STAGE CURTAIN
 - STL. BEAM, PTD. - REF. STRUCT.
 - WALL MOUNTED BASKETBALL GOAL
 - CEILING MOUNTED BASKETBALL GOAL

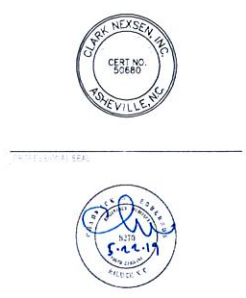
REFLECTED CEILING LEGEND

	2 X 2 ACOUSTICAL TILE CEILING
	2X4 ACOUSTICAL TILE CEILING
	GWB CEILING / SOFFIT
	T&G WOOD DECKING
	ACOUSTIC METAL DECK SYSTEM



HENDERSON COUNTY SCHOOLS
EDNEYVILLE ELEMENTARY SCHOOL
 215 WEST ROAD
 HENDERSONVILLE, NC 27530

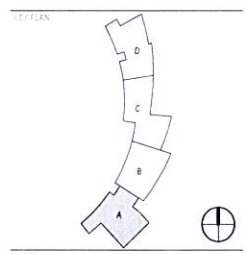
CLARK NEXSEN
 407 COLLEGE STREET, SUITE 100
 RICHMOND, NORTH CAROLINA 27260
 818.237.0975
 CLARKNEXSEN.COM



06/04/2018
ISSUED FOR CONSTRUCTION

REVISIONS

B	4/19/2018	ADDENDUM 2
2	7/2/2018	REVISION 2
5	8/28/2018	REVISION 5
10	1/21/2019	REVISION 10
13	5/22/2019	REVISION 13

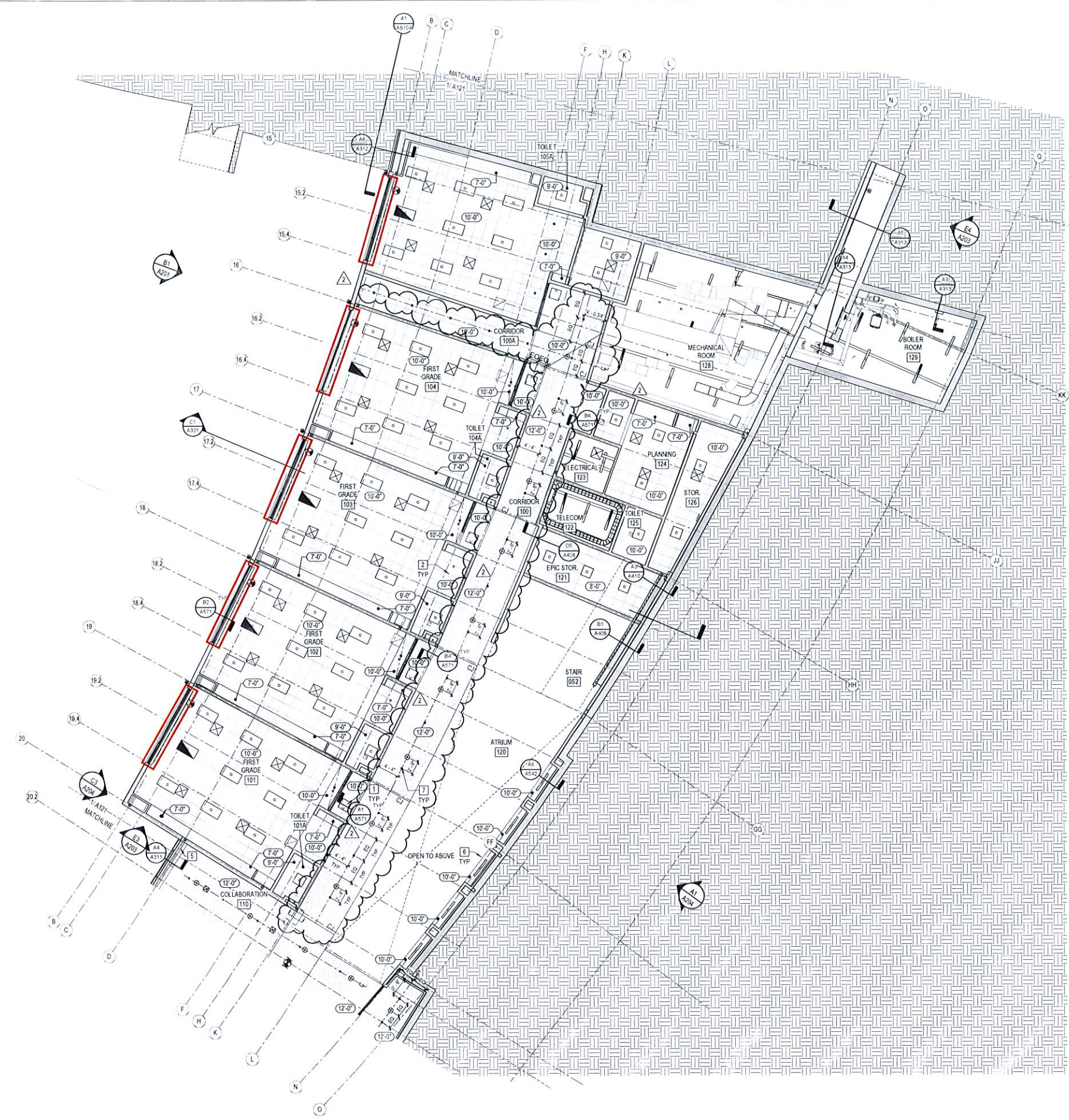


LOWER LEVEL REFLECTED CEILING PLAN - AREA A

A121

CN 5199.D

1 LOWER LEVEL RCP - AREA A
 1/8" = 1'-0" REF B1/A200



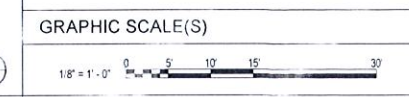
1 LOWER LEVEL RCP - AREA B
1/8" = 1'-0" REF: B1/A200

- GENERAL NOTES**
1. REFER TO SHEET A-001 FOR RCP LEGEND.
 2. REFER TO SHEETS A571 - A572 FOR CEILING DETAILS.
 3. ALL CEILINGS ARE 10'-0" AFF. UON.
 4. HVAC & LIGHTING FIXTURES SHOWN ARE FOR GRAPHICAL PURPOSES ONLY. GC TO REFER TO PME DRAWINGS AND SPRINKLER PIPING SHOP DRAWINGS AND SHOULD NOTIFY ARCHITECT IMMEDIATELY OF ANY CONFLICTS OR DISCREPANCIES.
 5. GENERAL CONTRACTOR TO COORDINATE ALL SOFFIT BULKHEAD FRAMING WITH FINAL LIGHTING FIXTURES & HVAC DIFFUSER LOCATIONS.
 6. GENERAL CONTRACTOR TO FIELD VERIFY CEILING HEIGHTS SHOWN ON RCP DRAWINGS PRIOR TO INSTALLATION OF ALL MECHANICAL DUCTWORK, SPRINKLER PIPING, ELECTRICAL EQUIPMENT, CONDUITS, ETC. ARCHITECT TO BE NOTIFIED IMMEDIATELY OF ANY DISCREPANCIES.
 7. GENERAL CONTRACTOR TO INSTALL WIRE HANGERS @ ALL CORNERS OF LIGHT FIXTURES, REGISTERS, & GRILLES.
 8. REFER TO INTERIOR & EXTERIOR SECTIONS FOR ADDITIONAL CEILING DETAILS NOT NOTED ON THIS SHEET.
 9. ALL RECESSED LIGHTING SHALL BE CENTERED WITHIN THE SOFFIT DIMENSIONS, UON.
 10. WHERE ACT IS LOCATED, ALL FIXTURES INCLUDING BUT NOT LIMITED TO MOTION DETECTORS, FIRE ALARM DEVICES, & SPRINKLER HEADS, ARE TO BE LOCATED IN THE CENTER OF THE TILE.
 11. WHERE GWB SOFFITS SPAN LONGER THAN 30'-0". CONTROL JOINTS SHOULD BE LOCATED IN GWB SOFFIT EVERY 30'-0". ALIGN WITH CONTROL JOINTS IN GWB WALLS WHERE PRESENT.

- KEY NOTES**
1. ACCESS PANEL - FINISH TO MATCH CEILING
 2. CENTER IN GYP.
 5. STL. BEAM PTD. - REF. STRUCT.
 6. RECESSED SEATING NICHE
 7. CENTER UNDER SOFFIT AND BETWEEN GRIDLINES

REFLECTED CEILING LEGEND

	2 X 2 ACOUSTICAL TILE CEILING
	2X4 ACOUSTICAL TILE CEILING
	GWB CEILING / SOFFIT
	T&G WOOD DECKING
	ACOUSTIC METAL DECK SYSTEM



HENDERSON COUNTY SCHOOLS
EDNEYVILLE ELEMENTARY SCHOOL
1000 W. GUYTON RD. | ASHEVILLE, NC 28801

CLARK NEXSEN
ARCHITECTS
1000 W. GUYTON RD. | ASHEVILLE, NC 28801
704.255.1111 | CLARKNEXSEN.COM

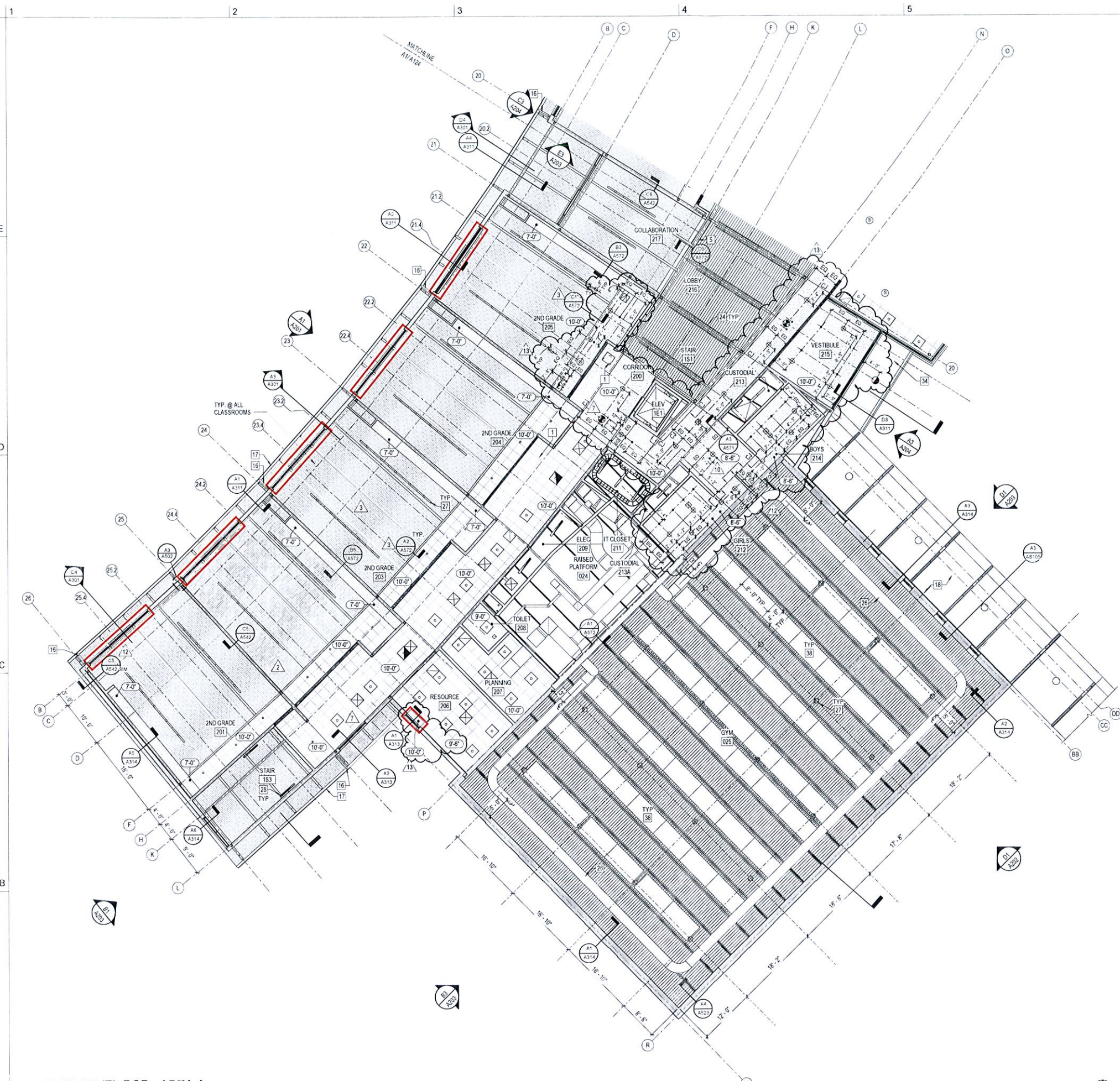
06.04.2018
ISSUED FOR CONSTRUCTION

B	4/19/2018	ADDENDUM 2
2	7/2/2018	REVISION 2
13	5/22/2019	REVISION 13

LOWER LEVEL REFLECTED CEILING PLAN - AREA B

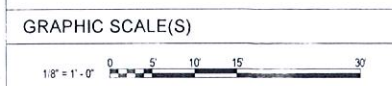
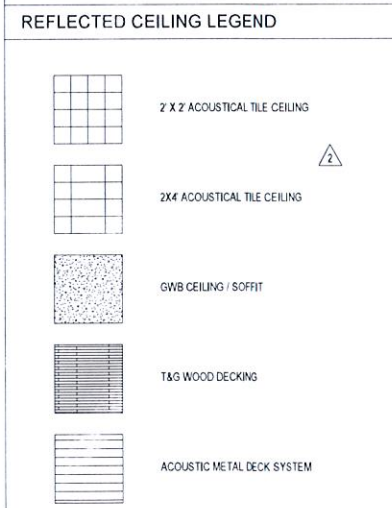
A122

5199.D



- GENERAL NOTES**
1. REFER TO SHEET A-001 FOR RCP LEGEND.
 2. REFER TO SHEETS A571 - A572 FOR CEILING DETAILS.
 3. ALL CEILINGS ARE 10'-0" AFF. UDN.
 4. HVAC & LIGHTING FIXTURES SHOWN ARE FOR GRAPHICAL PURPOSES ONLY. GC TO REFER TO PINE DRAWINGS AND SPRINKLER PIPING SHOP DRAWINGS AND SHOULD NOTIFY ARCHITECT IMMEDIATELY OF ANY CONFLICTS OR DISCREPANCIES.
 5. GENERAL CONTRACTOR TO COORDINATE ALL SOFFIT/BULKHEAD FRAMING WITH FINISH LIGHTING FIXTURES & HVAC DIFFUSER LOCATIONS.
 6. GENERAL CONTRACTOR TO FIELD VERIFY CEILING HEIGHTS SHOWN ON RCP DRAWINGS PRIOR TO INSTALLATION OF ALL MECHANICAL DUCTWORK, SPRINKLER PIPING, ELECTRICAL EQUIPMENT, CONDUITS, ETC. ARCHITECT TO BE NOTIFIED IMMEDIATELY OF ANY DISCREPANCIES.
 7. GENERAL CONTRACTOR TO INSTALL WIRE HANGERS @ ALL CORNERS OF LIGHT FIXTURES, REGISTERS, & GRILLES.
 8. REFER TO INTERIOR & EXTERIOR SECTIONS FOR ADDITIONAL CEILING DETAILS NOT NOTED ON THIS SHEET.
 9. ALL RECESSED LIGHTING SHALL BE CENTERED WITH THE SOFFIT DIMENSIONS, UDN.
 10. WHERE ACT IS LOCATED, ALL FIXTURES INCLUDING BUT NOT LIMITED TO MOTION DETECTORS, FIRE ALARM DEVICES, & SPRINKLER HEADS, ARE TO BE LOCATED IN THE CENTER OF THE TILE.
 11. WHERE GWB SOFFITS SPAN LONGER THAN 30'-0", CONTROL JOINTS SHOULD BE LOCATED IN GWB SOFFIT EVERY 30'-0". ALIGN WITH CONTROL JOINTS IN GWB WALLS WHERE PRESENT.

- KEY NOTES**
1. ACCESS PANEL - FINISH TO MATCH CEILING
 5. STL. BEAM, PTD. - REF. STRUCT.
 16. FACTORY FINISHED ALUM. RWL
 17. FACTORY FINISHED ALUM. GUTTER
 18. ALUM. CANOPY
 24. LINEAR LIGHT FIXTURE ATTACHED TO SIDE OF INVERTED TRUSS - REF. ELEC.
 26. FABRIC DUCT - REF. MECH.
 27. PENDANT LIGHT FIXTURE - REF. ELEC.
 28. WALL MOUNTED LIGHT FIXTURE - REF. ELEC.
 34. FIBER REINFORCED CONCRETE SOFFIT PANELS
 38. CEILING MOUNTED ACOUSTIC PANEL



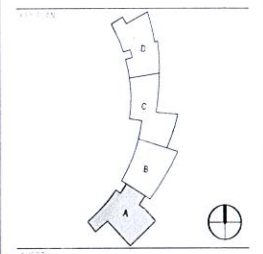
HENDERSON COUNTY SCHOOLS
**EDNEYVILLE
 ELEMENTARY SCHOOL**

CLARK NEXSEN
 ARCHITECTS
 1000 N. W. 10TH AVENUE
 SUITE 1000
 WILMINGTON, NC 28401
 TEL: 704.261.1100
 FAX: 704.261.1101
 WWW.CLARKNEXSEN.COM



06.04.2018
 ISSUED FOR CONSTRUCTION

B	4/19/2018	ADDENDUM 2
2	7/2/2018	REVISION 2
3	7/20/2018	REVISION 3
7	10/1/2018	REVISION 7
10	1/21/2019	REVISION 10
12	3/27/2019	REVISION 12
13	5/22/2019	REVISION 13

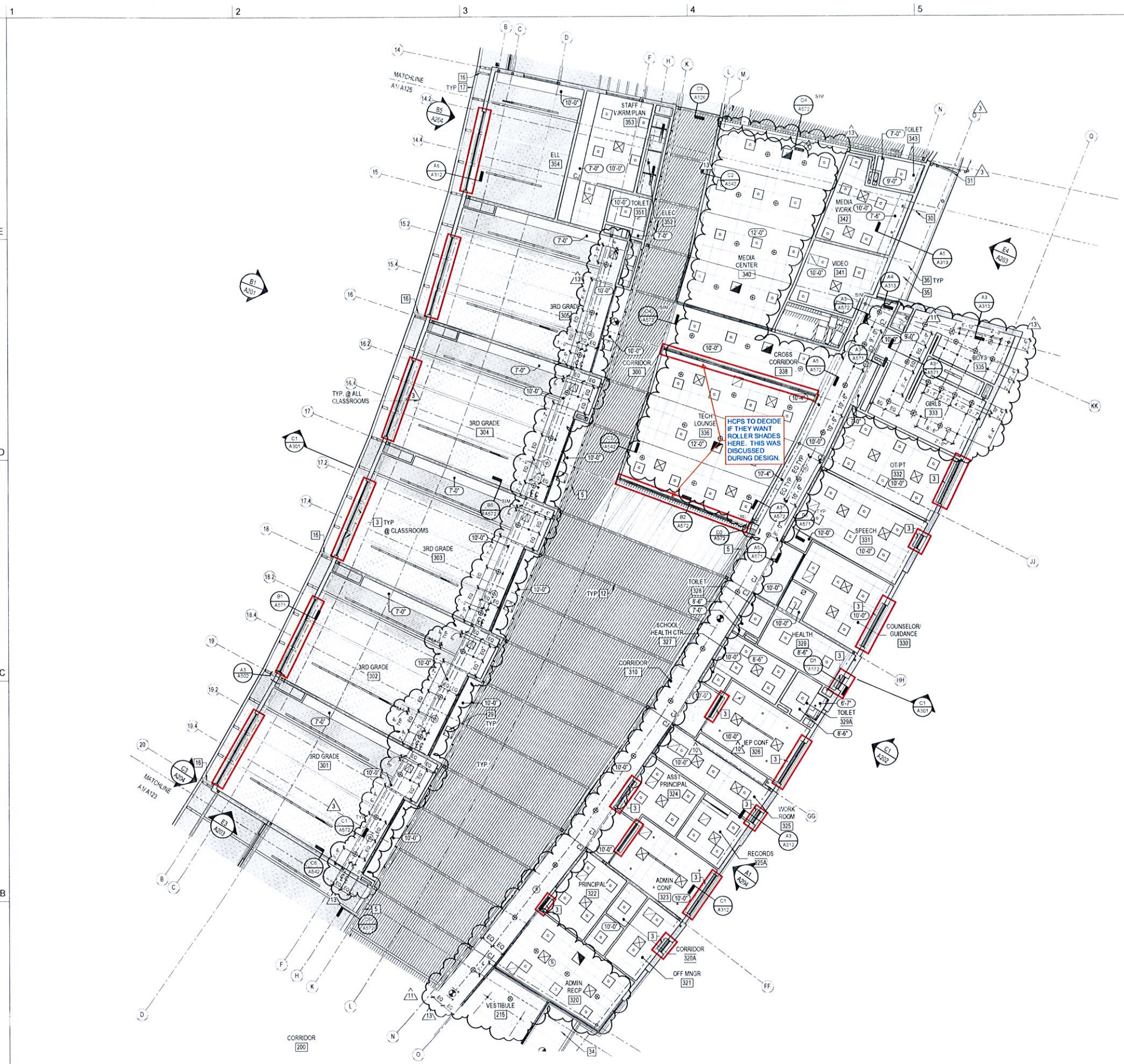


MAIN LEVEL REFLECTED
 CEILING PLAN - AREA A

A123

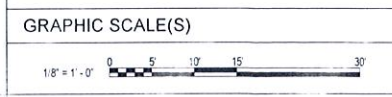
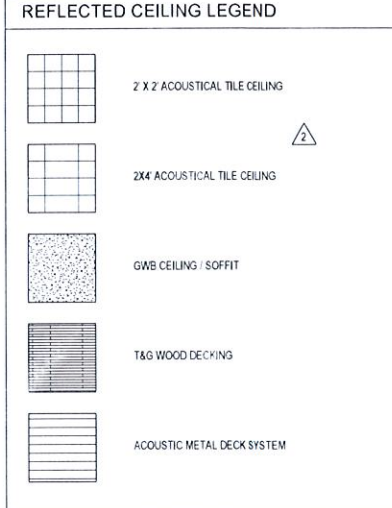
CN 5199.D

A1 MAIN LEVEL RCP - AREA A
 1/8" = 1'-0"
 REF A2 / A200



- GENERAL NOTES**
- REFER TO SHEET A-001 FOR RCP LEGEND.
 - REFER TO SHEETS A571 - A572 FOR CEILING DETAILS.
 - ALL CEILINGS ARE 10'-0" AFF. UON.
 - HVAC & LIGHTING FIXTURES SHOWN ARE FOR GRAPHICAL PURPOSES ONLY. GC TO REFER TO P&E DRAWINGS AND SPRINKLER PIPING SHOP DRAWINGS AND SHOULD NOTIFY ARCHITECT IMMEDIATELY OF ANY CONFLICTS OR DISCREPANCIES.
 - GENERAL CONTRACTOR TO COORDINATE ALL SOFFIT BULKHEAD FRAMING WITH FINAL LIGHTING FIXTURES & HVAC DIFFUSER LOCATIONS.
 - GENERAL CONTRACTOR TO FIELD VERIFY CEILING HEIGHTS SHOWN ON RCP DRAWINGS PRIOR TO INSTALLATION OF ALL MECHANICAL DUCTWORK, SPRINKLER PIPING, ELECTRICAL EQUIPMENT, CONDUITS, ETC. ARCHITECT TO BE NOTIFIED IMMEDIATELY OF ANY DISCREPANCIES.
 - GENERAL CONTRACTOR TO INSTALL WIRE HANGERS @ ALL CORNERS OF LIGHT FIXTURES, REGISTERS & GRILLES.
 - REFER TO INTERIOR & EXTERIOR SECTIONS FOR ADDITIONAL CEILING DETAILS NOT NOTED ON THIS SHEET.
 - ALL RECESSED LIGHTING SHALL BE CENTERED WITHIN THE SOFFIT DIMENSIONS. UON.
 - WHERE ACT IS LOCATED, ALL FIXTURES INCLUDING BUT NOT LIMITED TO MOTION DETECTORS, FIRE ALARM DEVICES & SPRINKLER HEADS ARE TO BE LOCATED IN THE CENTER OF THE TILE.
 - WHERE GWB SOFFITS SPAN LONGER THAN 30'-0", CONTROL JOINTS SHOULD BE LOCATED IN GWB SOFFIT EVERY 30'-0". ALIGN WITH CONTROL JOINTS IN GWB WALLS WHERE PRESENT.

- KEY NOTES**
- ROLLER SHADE. N.I.C.
 - STL BEAM PTD. - REF. STRUCT.
 - GLULAM BEAM OR TRUSS - REFER TO STRUCTURAL
 - FACTORY FINISHED ALUM. R.V.A.
 - LINEAR LIGHT FIXTURE ATTACHED TO SIDE OF INVERTED TRUSS - REF. ELEC.
 - ACCESS PANEL - FINISH TO MATCH CEILING. ALIGN W E.O. SIDELITE BELOW. TYP. ALL 3RD GRADE.
 - OVERFLOW DRAIN WITH SOFFIT GRILLE. SEE DETAIL A545B
 - ROOF DRAIN LEADER
 - DIRECT APPLIED FINISH SYSTEM
 - CONTROL JOINT



HENDERSON COUNTY SCHOOLS

EDNEYVILLE ELEMENTARY SCHOOL

CLARK NEXSEN

317 228 1400 • 317 228 1400 FAX
255 512 1100 • 255 512 1100 FAX
527 741 7000

CLARK NEXSEN, INC.
CERT. NO. 54489
ASHEVILLE, N.C.

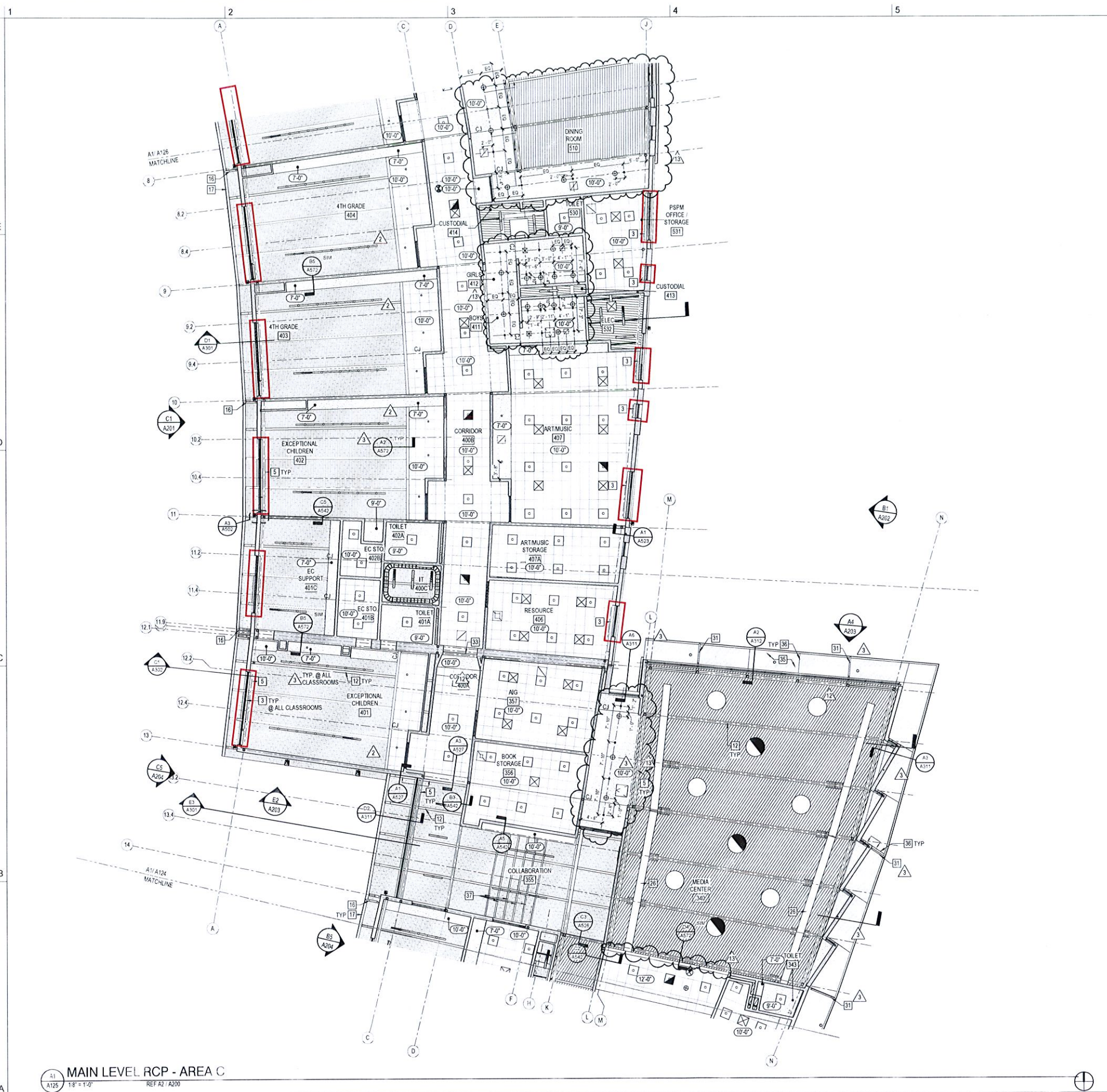
ISSUED FOR CONSTRUCTION

B	4/19/2018	ADDENDUM 2
3	7/20/2018	REVISION 3
10	1/21/2019	REVISION 10
11	3/07/2019	REVISION 11
13	5/22/2019	REVISION 13

MAIN LEVEL REFLECTED CEILING PLAN - AREA B

A124

CN 5199.D



A1 MAIN LEVEL RCP - AREA C
A125 1/8" = 1'-0" REF A2 / A200

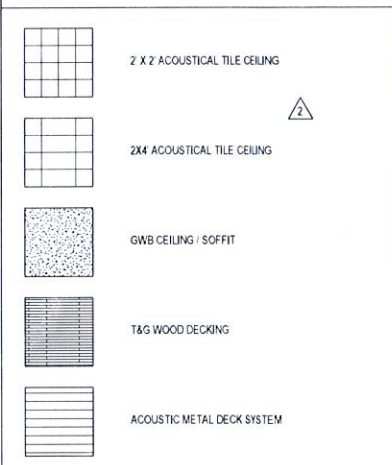
GENERAL NOTES

1. REFER TO SHEET A-001 FOR RCP LEGEND.
2. REFER TO SHEETS A571 - A572 FOR CEILING DETAILS.
3. ALL CEILINGS ARE 10'-0" AFF. UON.
4. HVAC & LIGHTING FIXTURES SHOWN ARE FOR GRAPHICAL PURPOSES ONLY. GC TO REFER TO P&E DRAWINGS AND SPRINKLER PIPING SHOP DRAWINGS AND SHOULD NOTIFY ARCHITECT IMMEDIATELY OF ANY CONFLICTS OR DISCREPANCIES.
5. GENERAL CONTRACTOR TO COORDINATE ALL SOFFIT BULKHEAD FRAMING WITH FINAL LIGHTING FIXTURES & HVAC DIFFUSER LOCATIONS.
6. GENERAL CONTRACTOR TO FIELD VERIFY CEILING HEIGHTS SHOWN ON RCP DRAWINGS PRIOR TO INSTALLATION OF ALL MECHANICAL DUCTWORK, SPRINKLER PIPING, ELECTRICAL EQUIPMENT, CONDUITS ETC. ARCHITECT TO BE NOTIFIED IMMEDIATELY OF ANY DISCREPANCIES.
7. GENERAL CONTRACTOR TO INSTALL WIRE HANGERS @ ALL CORNERS OF LIGHT FIXTURES, REGISTERS & GRILLES.
8. REFER TO INTERIOR & EXTERIOR SECTIONS FOR ADDITIONAL CEILING DETAILS NOT NOTED ON THIS SHEET.
9. ALL RECESSED LIGHTING SHALL BE CENTERED WITHIN THE SOFFIT DIMENSIONS. UON.
10. WHERE ACT IS LOCATED, ALL FIXTURES INCLUDING BUT NOT LIMITED TO MOTION DETECTORS, FIRE ALARM DEVICES, & SPRINKLER HEADS, ARE TO BE LOCATED IN THE CENTER OF THE TILE.
11. WHERE GWB SOFFITS SPAN LONGER THAN 30'-0", CONTROL JOINTS SHOULD BE LOCATED IN GWB SOFFIT EVERY 30'-0", ALIGN WITH CONTROL JOINTS IN GWB WALLS WHERE PRESENT.

KEY NOTES

- 3 ROLLER SHADE, N.I.C.
- 5 STL. BEAM PTD. - REF. STRUCT.
- 12 GLULAM BEAM OR TRUSS - REFER TO STRUCTURAL
- 16 FACTORY FINISHED ALUM. RVL.
- 17 FACTORY FINISHED ALUM. GUTTER
- 26 FABRIC DUCT - REF. MECH.
- 31 ROOF DRAIN LEADER
- 33 EXPANSION JOINT
- 35 DIRECT APPLIED FINISH SYSTEM
- 36 CONTROL JOINT
- 37 PIPE OR CONDUIT CORED THROUGH CENTER OF GLULAM BEAMS AT 1'-0" CENTERS. TYP. REFER TO PLUMBING, MECHANICAL, AND ELECTRICAL DRAWINGS

REFLECTED CEILING LEGEND



GRAPHIC SCALE(S)



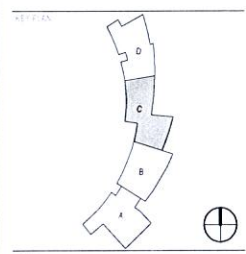
HENDERSON COUNTY SCHOOLS
**EDNEYVILLE
 ELEMENTARY SCHOOL**

CLARK NEXSEN
 501 COLLEGE STREET, SUITE 300
 ASHEVILLE, NORTH CAROLINA 28701
 828.257.2925
 CLARK@CLARKNEXSEN.COM



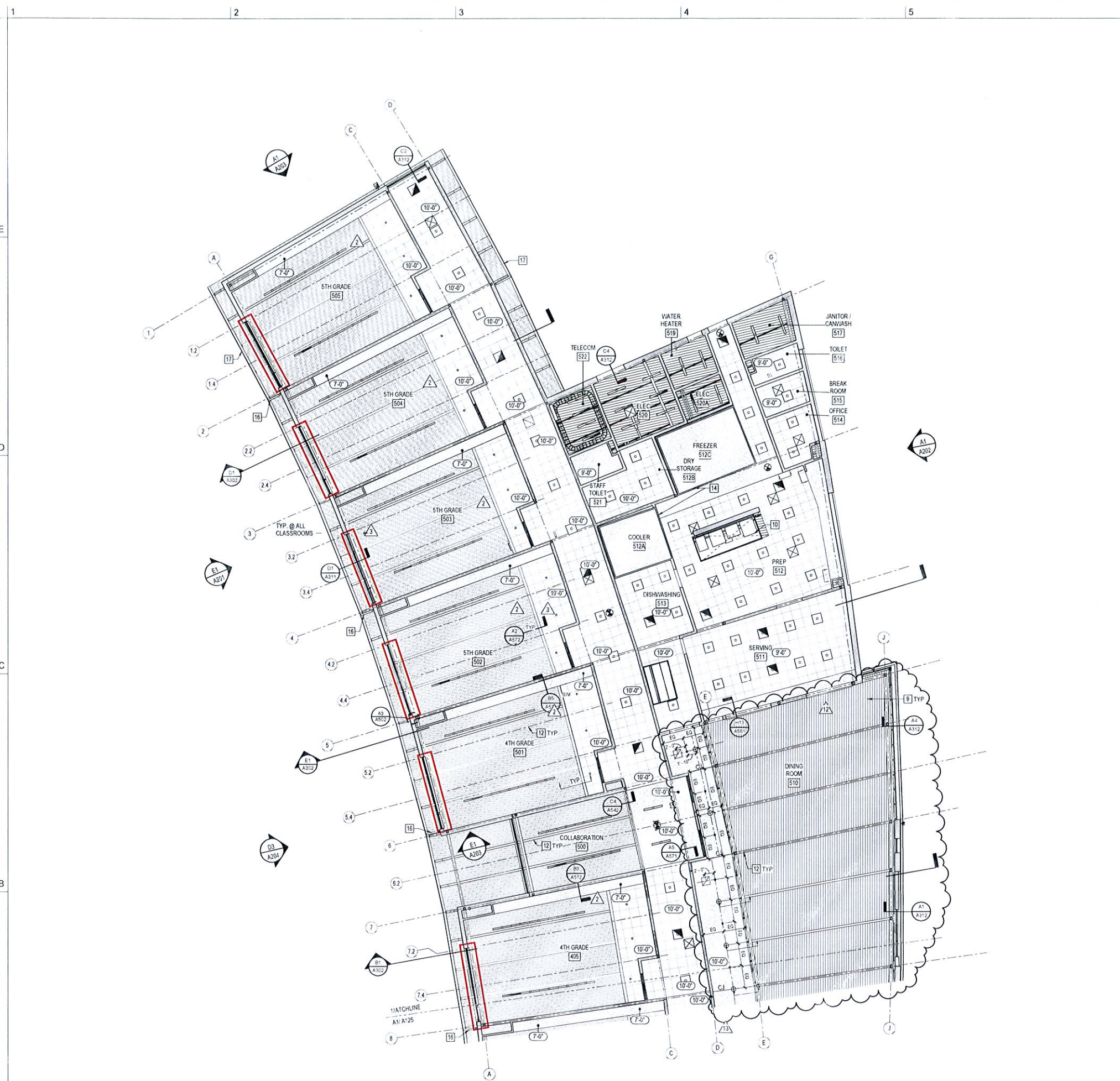
06/04/2018
 ISSUED FOR CONSTRUCTION

2	7/2/2018	REVISION 2
3	7/2/2018	REVISION 3
12	3/27/2019	REVISION 12
13	5/22/2019	REVISION 13



MAIN LEVEL REFLECTED
 CEILING PLAN - AREA C

A125



A1 MAIN LEVEL RCP - AREA D
 1/8" = 1'-0" REF: 512/A200

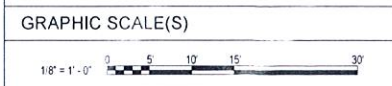
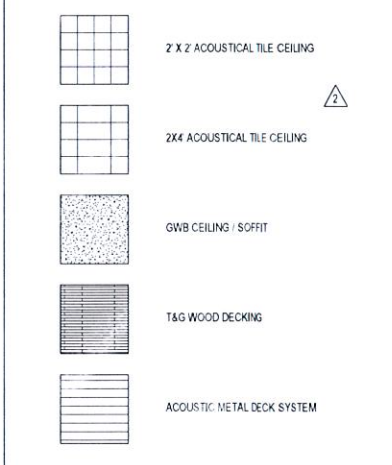
GENERAL NOTES

1. REFER TO SHEET A-001 FOR RCP LEGEND.
2. REFER TO SHEETS A571 - A572 FOR CEILING DETAILS.
3. ALL CEILINGS ARE 10'-0" AFF. UON.
4. HVAC & LIGHTING FIXTURES SHOWN ARE FOR GRAPHICAL PURPOSES ONLY. GC TO REFER TO P&E DRAWINGS AND SPRINKLER PIPING SHOP DRAWINGS AND SHOULD NOTIFY ARCHITECT IMMEDIATELY OF ANY CONFLICTS OR DISCREPANCIES.
5. GENERAL CONTRACTOR TO COORDINATE ALL SOFFIT, BULKHEAD FRAMING WITH FINAL LIGHTING FIXTURES & HVAC DIFFUSER LOCATIONS.
6. GENERAL CONTRACTOR TO FIELD VERIFY CEILING HEIGHTS SHOWN ON RCP DRAWINGS PRIOR TO INSTALLATION OF ALL MECHANICAL DUCTWORK, SPRINKLER PIPING, ELECTRICAL EQUIPMENT, CONDUITS, ETC. ARCHITECT TO BE NOTIFIED IMMEDIATELY OF ANY DISCREPANCIES.
7. GENERAL CONTRACTOR TO INSTALL WIRE HANGERS @ ALL CORNERS OF LIGHT FIXTURES, REGISTERS, & GRILLES.
8. REFER TO INTERIOR & EXTERIOR SECTIONS FOR ADDITIONAL CEILING DETAILS NOT NOTED ON THIS SHEET.
9. ALL RECESSED LIGHTING SHALL BE CENTERED WITHIN THE SOFFIT DIMENSIONS, UON.
10. WHERE ACT IS LOCATED, ALL FIXTURES INCLUDING BUT NOT LIMITED TO MOTION DETECTORS, FIRE ALARM DEVICES, & SPRINKLER HEADS, ARE TO BE LOCATED IN THE CENTER OF THE TILE.
11. WHERE GWB SOFFITS SPAN LONGER THAN 30'-0", CONTROL JOINTS SHOULD BE LOCATED IN GWB SOFFIT EVERY 30'-0". ALIGN WITH CONTROL JOINTS IN GWB WALLS WHERE PRESENT.

KEY NOTES

9. DUCT - REFER TO MECHANICAL
10. KITCHEN HOOD EQUIPMENT - REFER TO MECHANICAL
12. GLULAM BEAM OR TRUSS - REFER TO STRUCTURAL
14. SPECIFIED FREEZER/COOLER UNIT
16. FACTORY FINISHED ALUM. RVL
17. FACTORY FINISHED ALUM. GUTTER
24. LINEAR LIGHT FIXTURE ATTACHED TO SIDE OF INVERTED TRUSS - REF. ELEC.

REFLECTED CEILING LEGEND



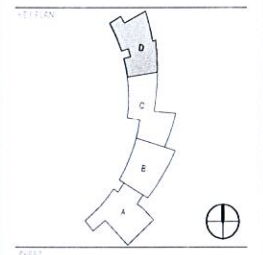
HENDERSON COUNTY SCHOOLS
**EDNEYVILLE
 ELEMENTARY SCHOOL**

CLARK NEXSEN
 ARCHITECTS
 1010 JEFFERSON STREET, SUITE 200
 ASHEVILLE, NORTH CAROLINA 28701
 828.252.1111
 CLARKNEXSEN.COM



06.04.2018
ISSUED FOR CONSTRUCTION

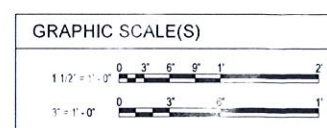
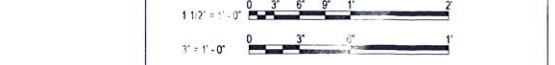
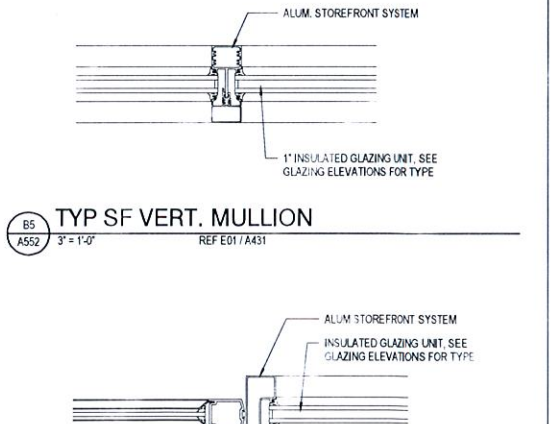
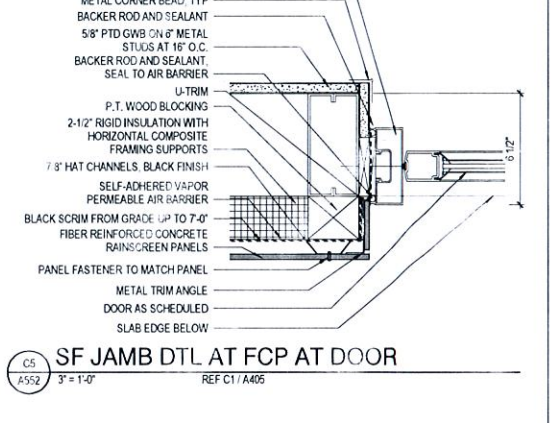
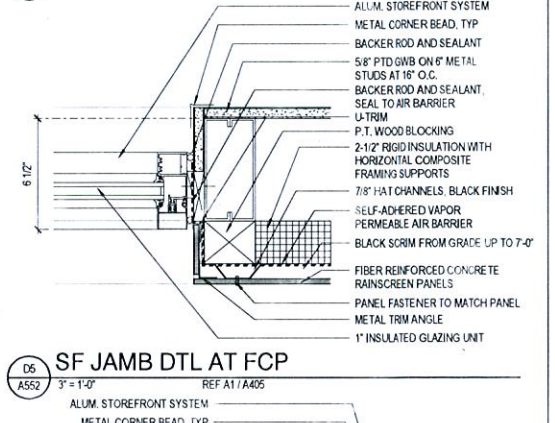
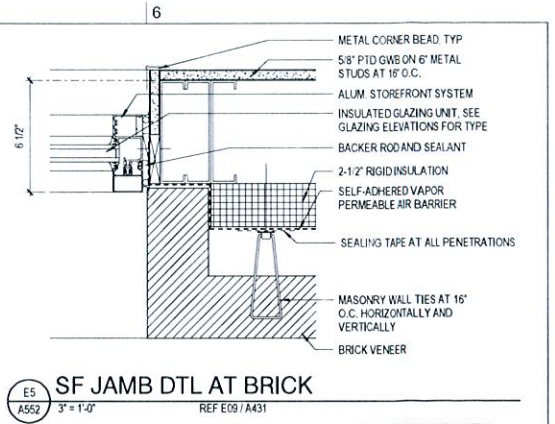
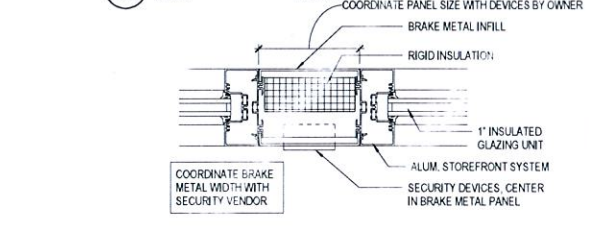
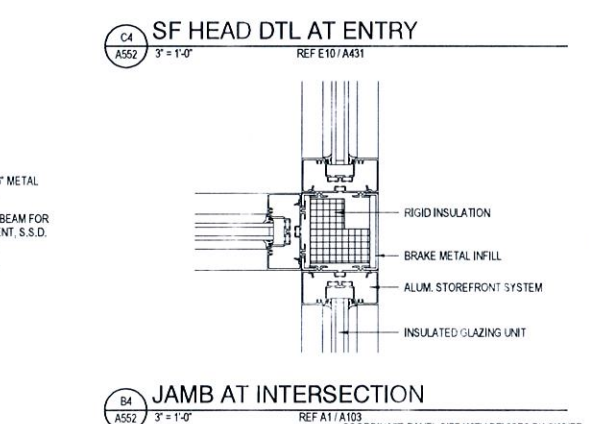
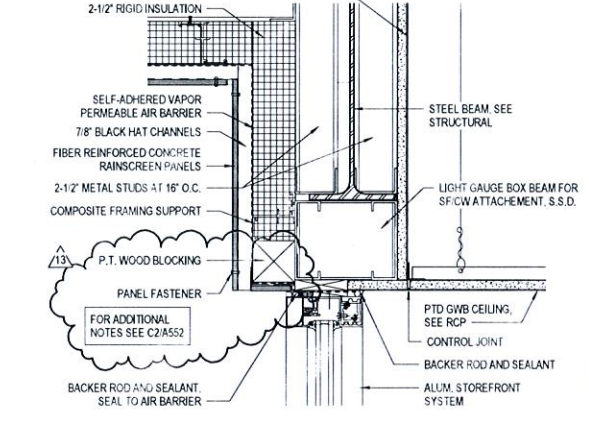
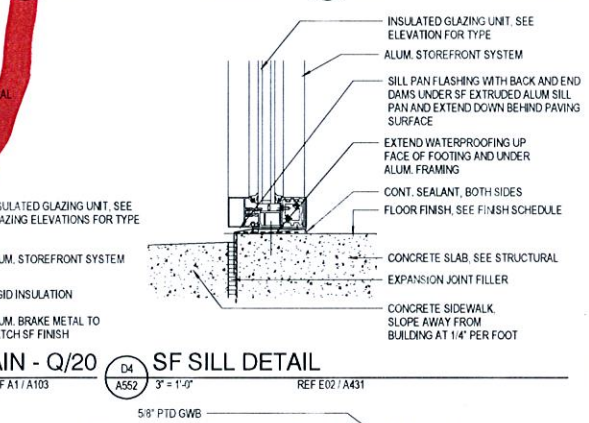
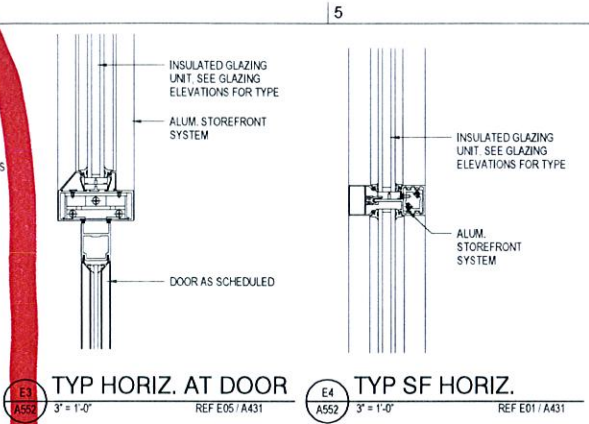
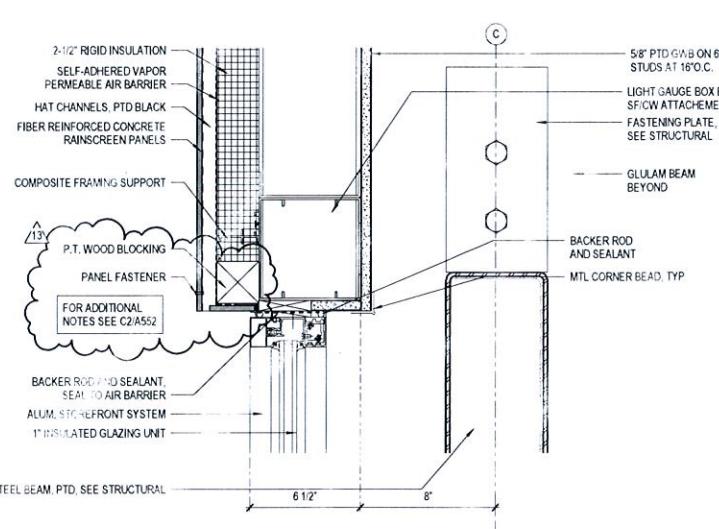
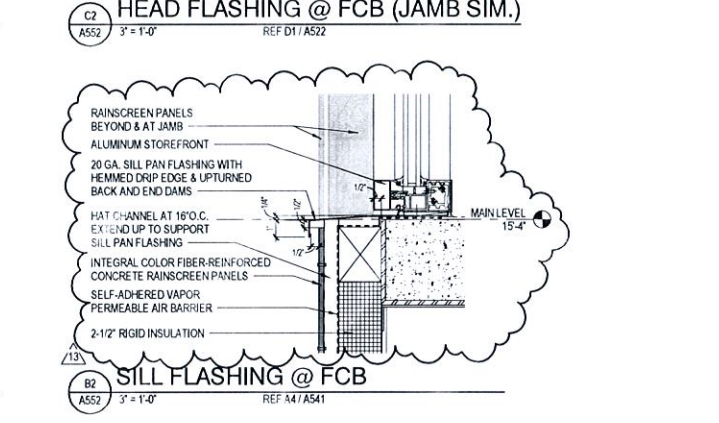
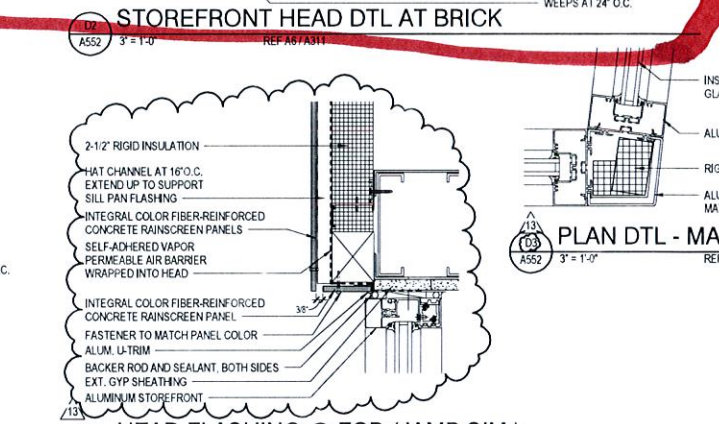
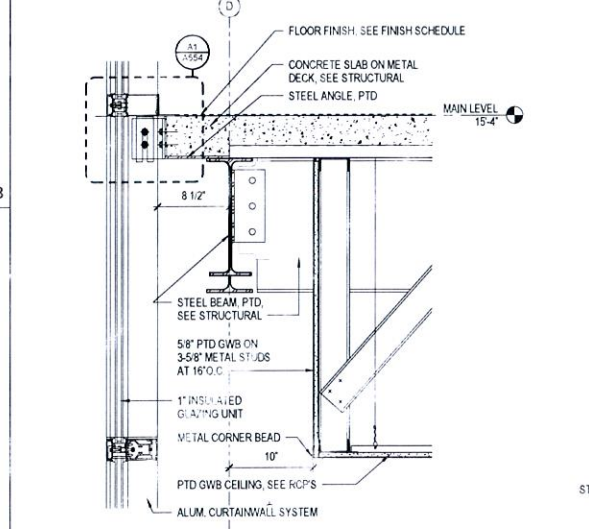
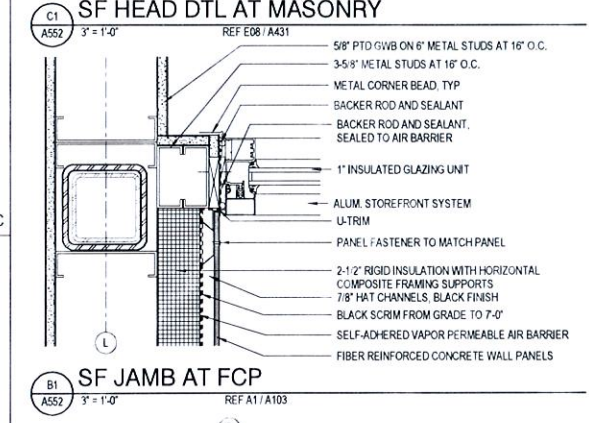
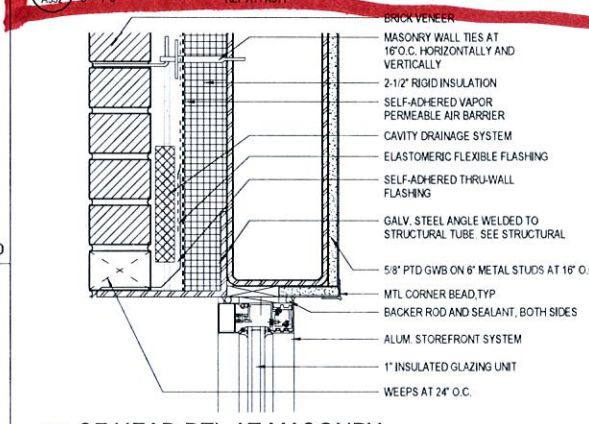
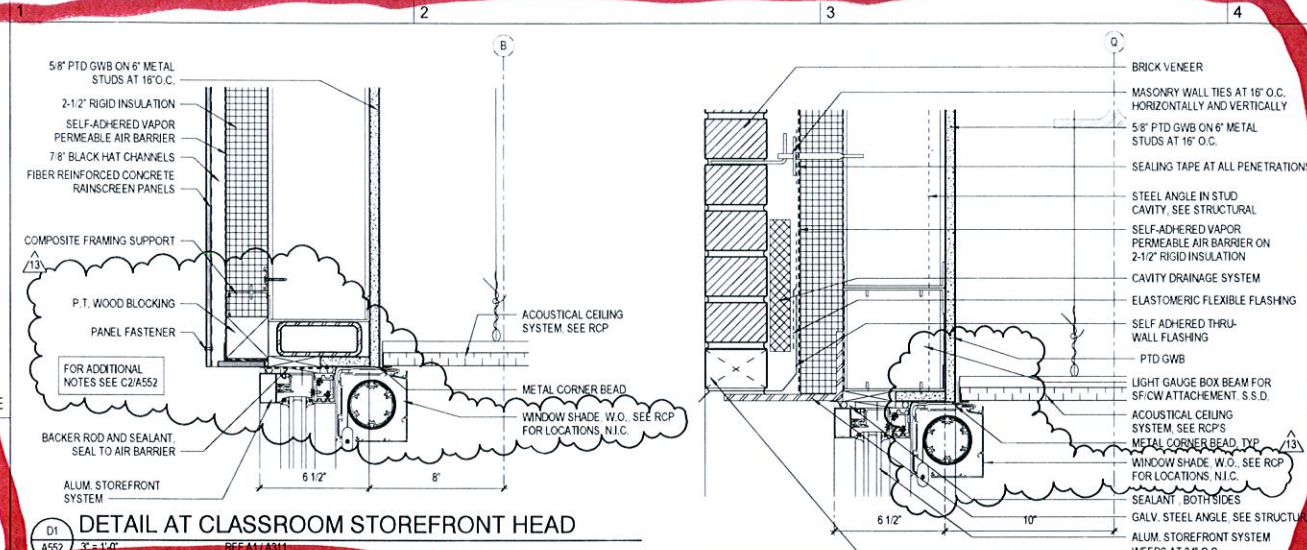
NO.	DATE	REVISION
B	4/19/2018	ADDENDUM 2
2	7/2/2018	REVISION 2
3	7/29/2018	REVISION 3
12	3/27/2019	REVISION 12
13	5/22/2019	REVISION 13



**MAIN LEVEL REFLECTED
 CEILING PLAN - AREA D**

A126

CS 5199.D





06.04.2018
ISSUED FOR CONSTRUCTION

13 5/22/2019 REVISION 13

CEILING DETAILS - TYPICAL

A571

1 2 3 4 5 6

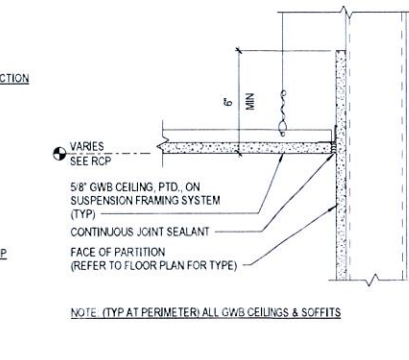
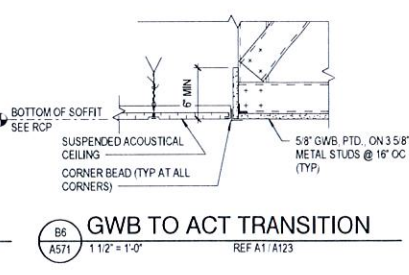
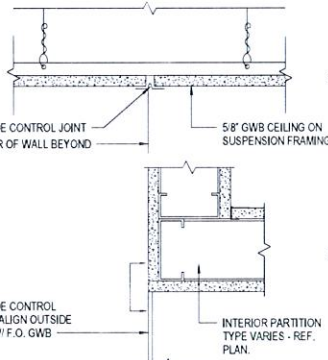
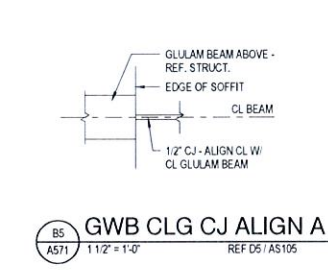
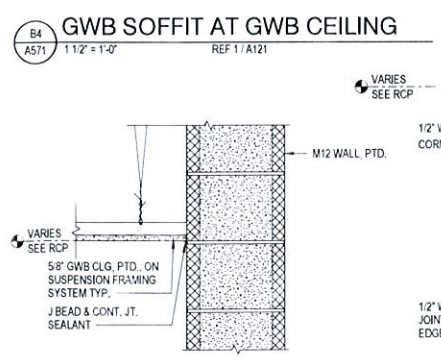
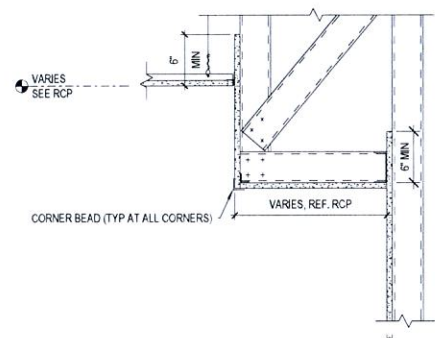
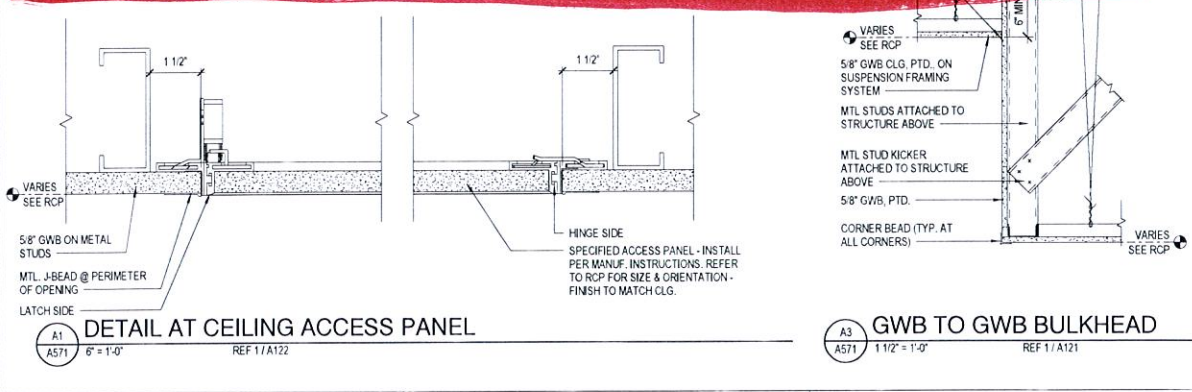
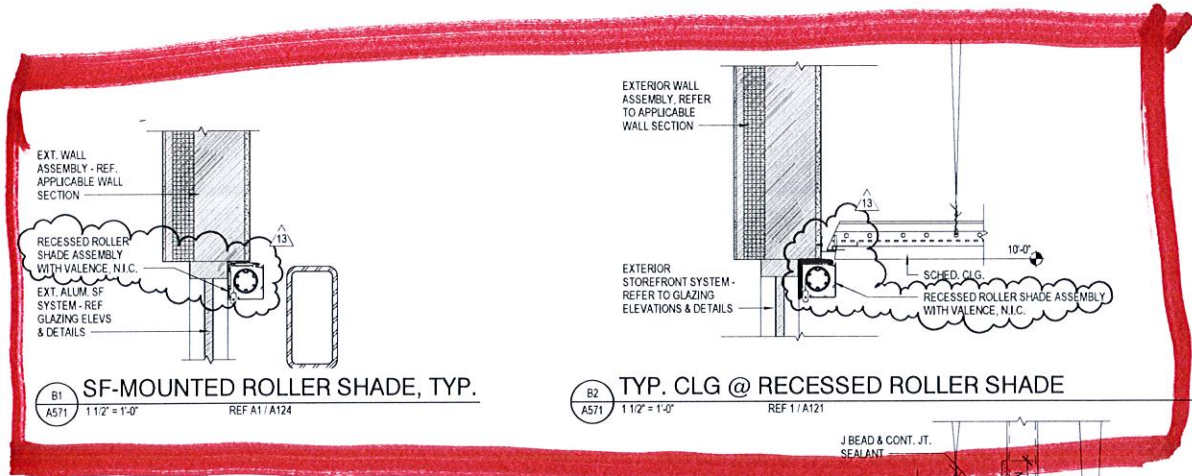
E

D

C

B

A



B6
 A571 1 1/2" = 1'-0"
 REF A1/A123

A6
 A571 3" = 1'-0"

B4
 A571 1 1/2" = 1'-0"
 REF 1/A121

A4
 A571 1 1/2" = 1'-0"
 REF 1/A121

B5
 A571 1 1/2" = 1'-0"
 REF D5/A5105

A5
 A571 3" = 1'-0"
 REF 1/A121

B1
 A571 1 1/2" = 1'-0"
 REF A1/A124

B2
 A571 1 1/2" = 1'-0"
 REF 1/A121

A1
 A571 6" = 1'-0"
 REF 1/A122

A3
 A571 1 1/2" = 1'-0"
 REF 1/A121