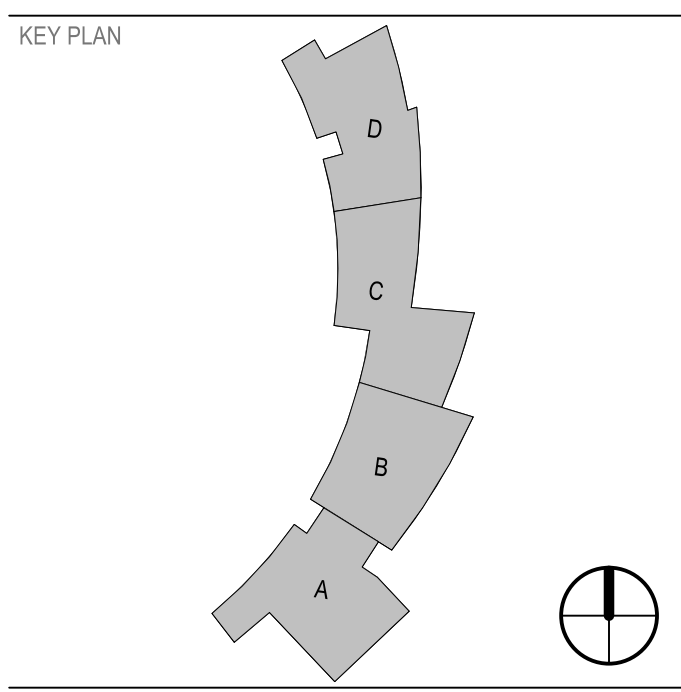


2018.10.25 16:18:04-04'00"
 SUBMITTAL
 06.04.2018
ISSUED FOR CONSTRUCTION

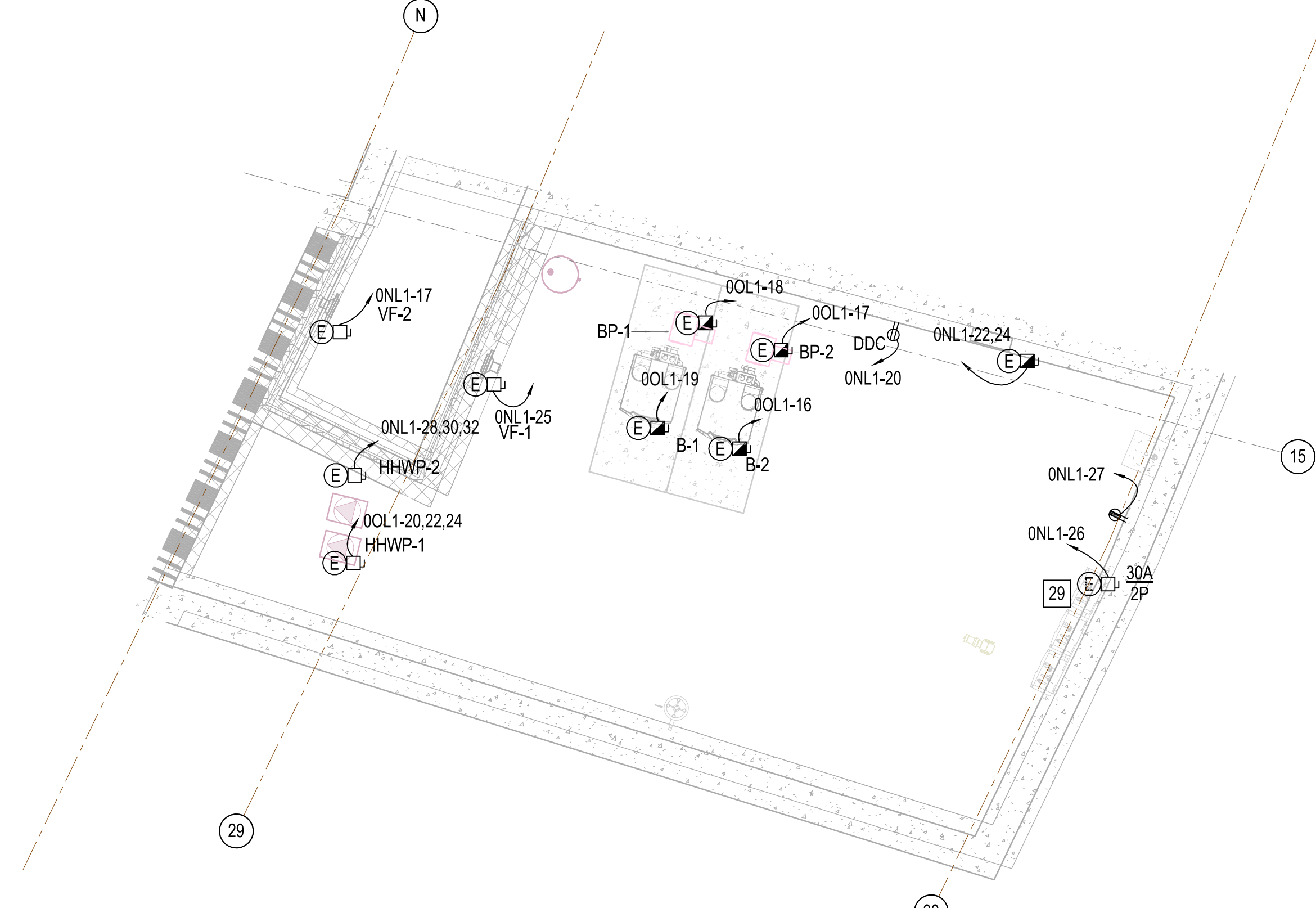
REVISIONS	
A	4/19/2018 ADDENDUM 2
B	10/25/18 Revision 8



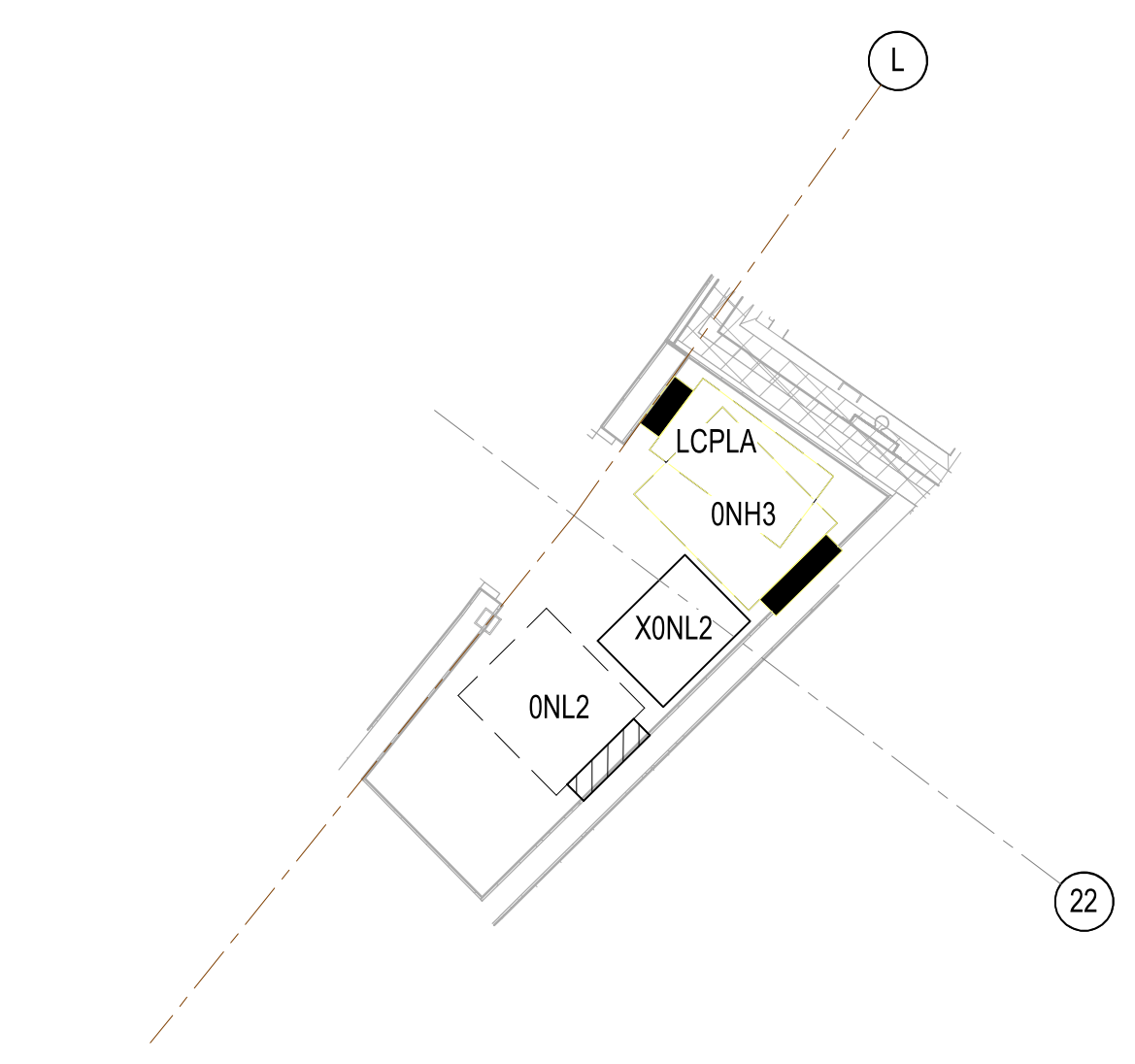
SHEET
ENLARGED ELECTRICAL PLANS

EP401
 DESIGN: JAR
 DRAWN: JAR
 REVIEW: PJR
 CN
 5199.D

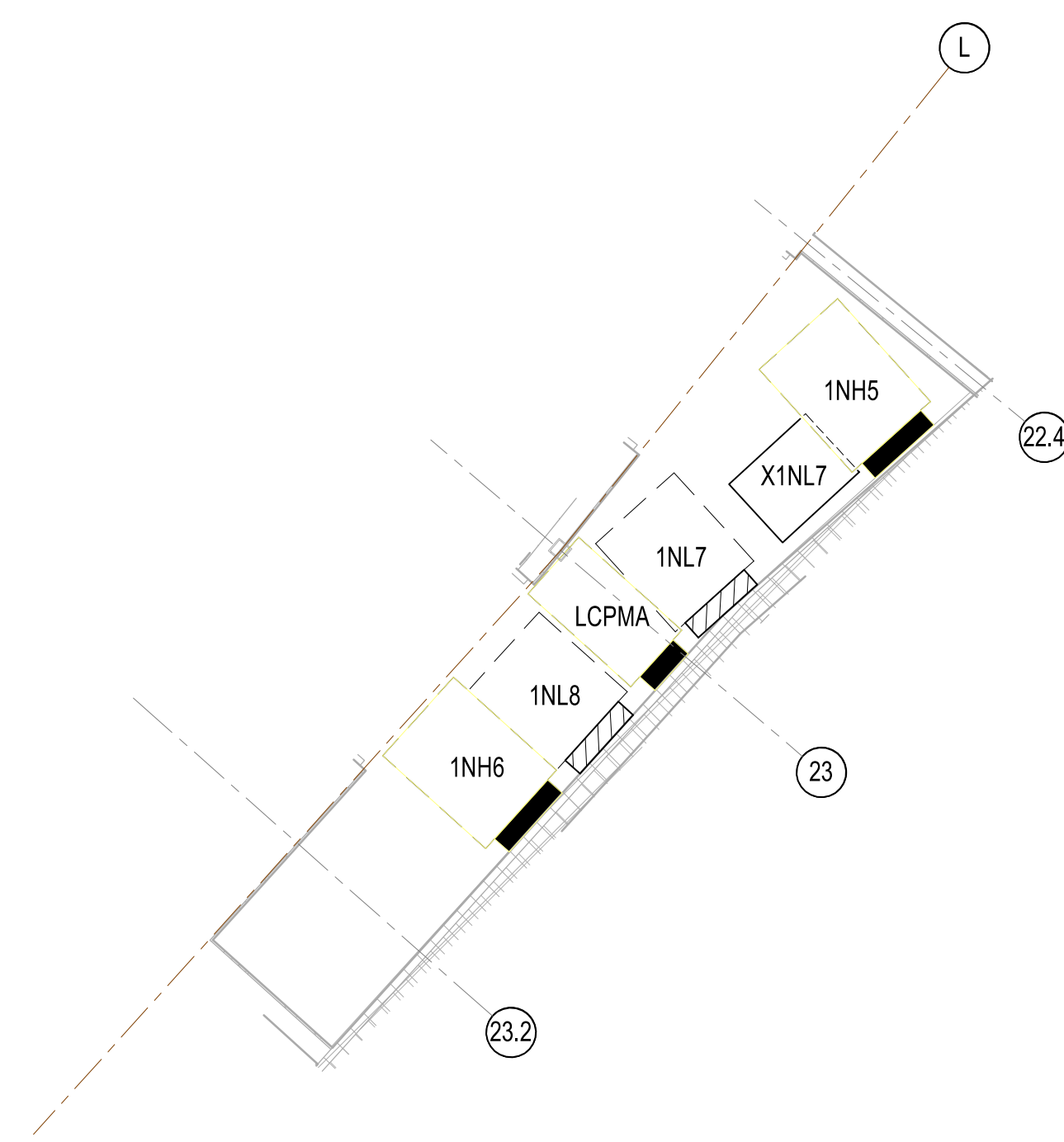
D1 BOILER ROOM 129 ENLARGED PLAN
 1/4" = 1'-0"



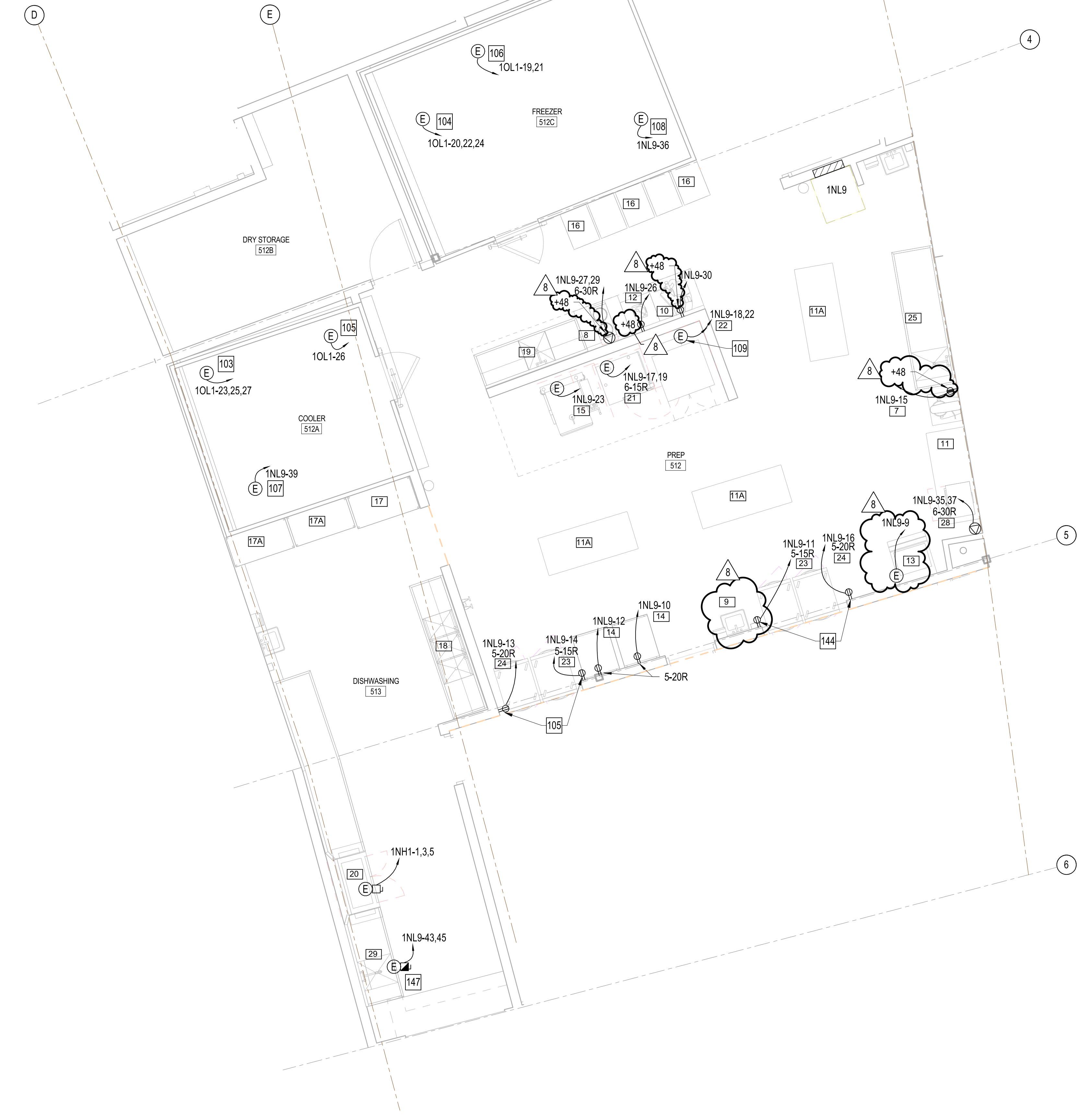
B1 ENLARGED ELECTRICAL ROOM 017
 1/4" = 1'-0"



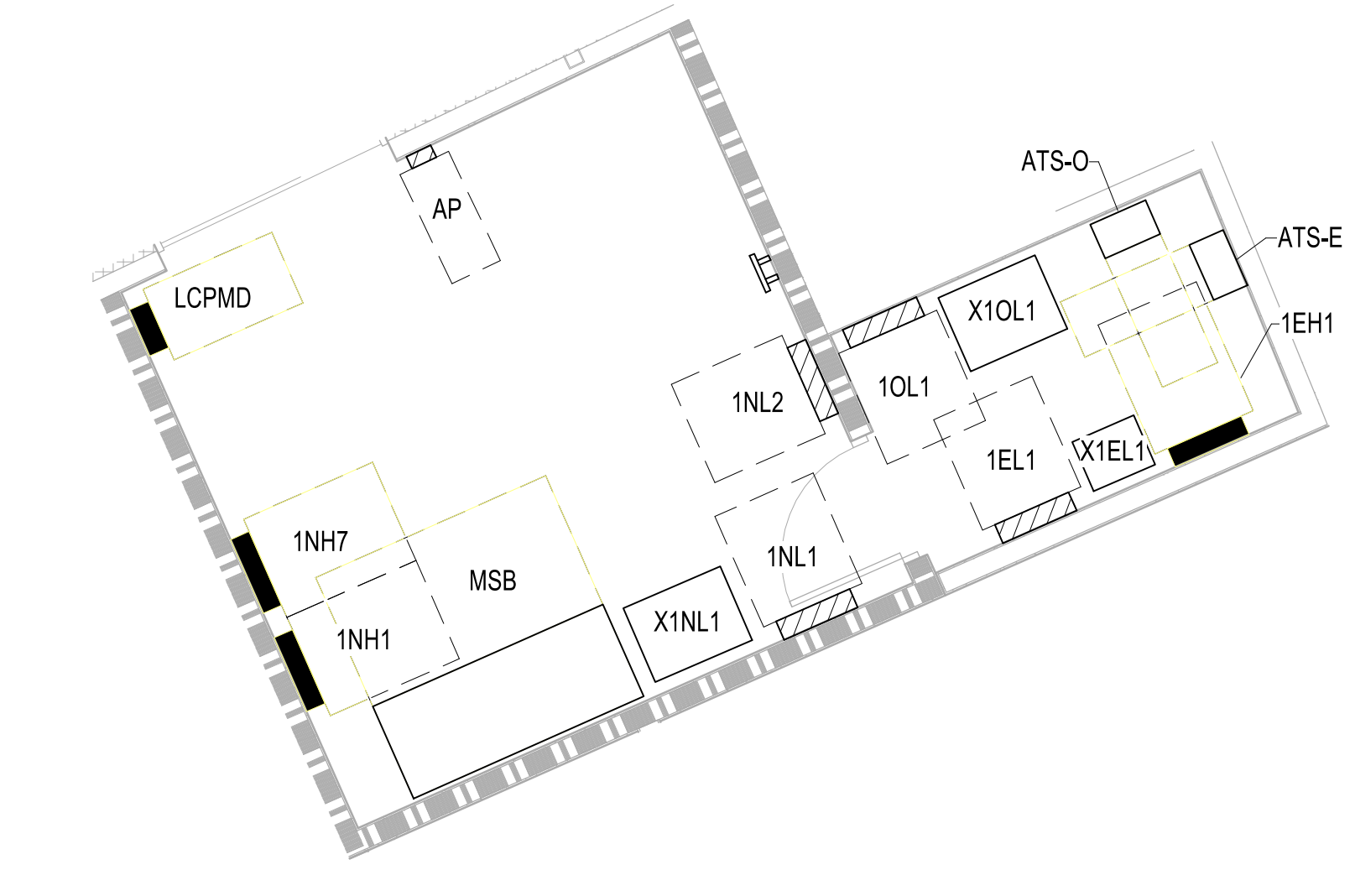
B2 ENLARGED ELECTRICAL ROOM 209
 1/4" = 1'-0"



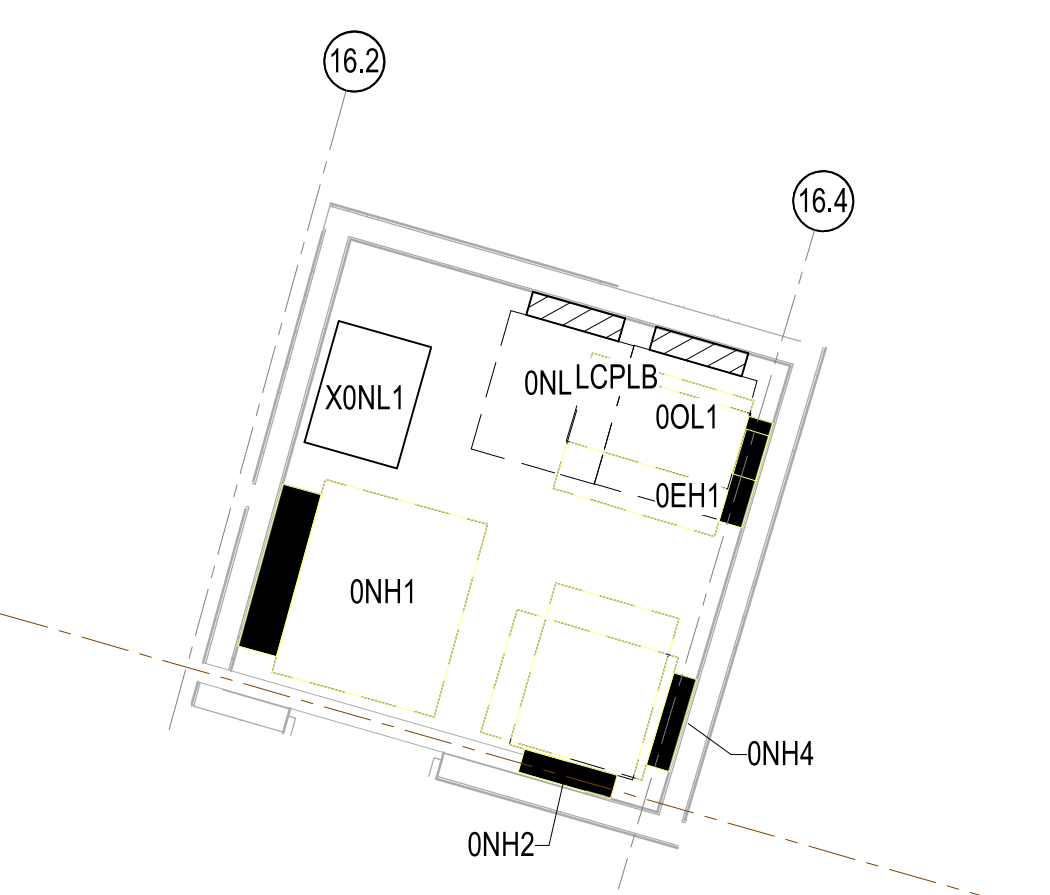
B4 ENLARGED KITCHEN PLAN
 1/4" = 1'-0"



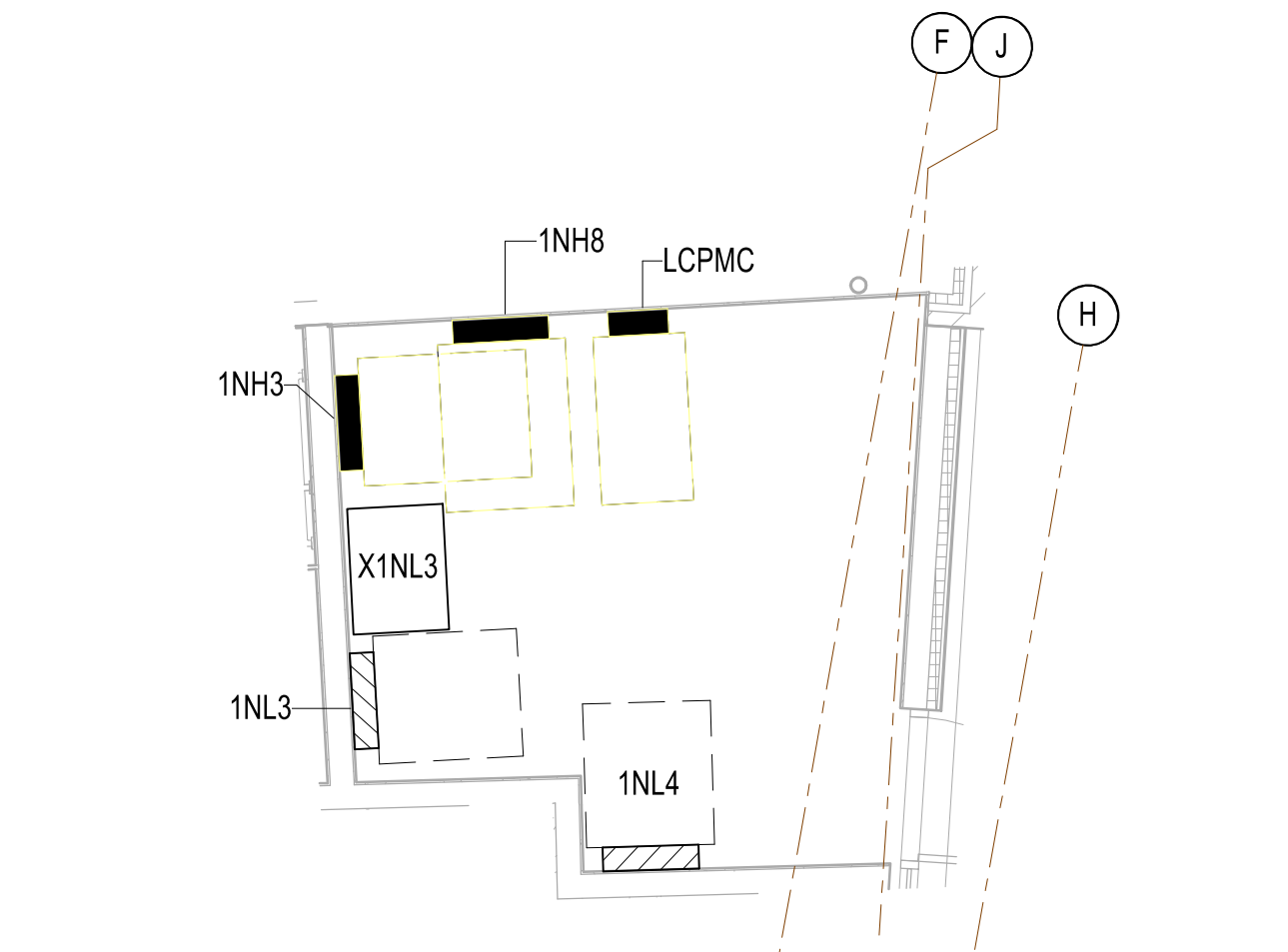
A1 ENLARGED ELECTRICAL ROOM 520, 520A
 1/4" = 1'-0"



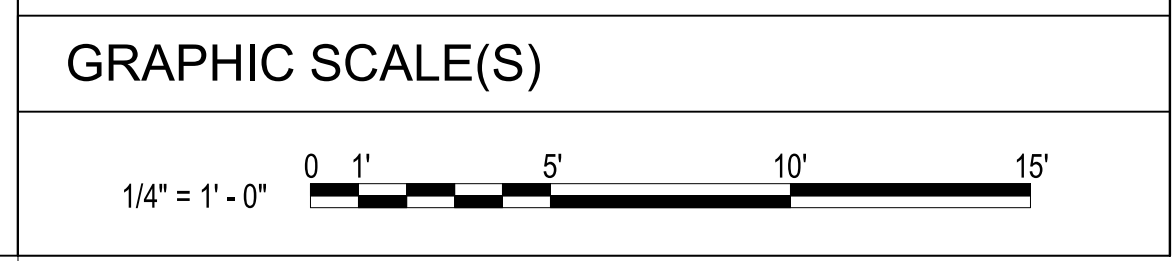
A3 ENLARGED ELEC ROOM 123
 1/4" = 1'-0"



A4 ENLARGED ELECTRICAL ROOM 532
 1/4" = 1'-0"



- # KEY NOTES**
- 29 CONNECTION TO WATER HEATER CONTROLLER. MAXIMUM OF 4 WATER HEATERS PER CIRCUIT.
 - 103 CONNECTION TO COOLER REMOTE CONDENSING UNIT. COORDINATE FINAL LOCATION WITH ARCHITECTURAL PLANS PRIOR TO INSTALLATION.
 - 104 CONNECTION TO FREEZER REMOTE CONDENSING UNIT. COORDINATE FINAL LOCATION WITH ARCHITECTURAL PLANS PRIOR TO INSTALLATION.
 - 105 CONNECTION TO COOLER EVAPORATOR COIL.
 - 106 CONNECTION TO FREEZER EVAPORATOR COIL.
 - 107 CONNECTION TO COOLER LIGHTS.
 - 108 CONNECTION TO FREEZER LIGHTS.
 - 109 PROVIDE PASS & SEYMOUR MODEL 2095 (OR APPROVED EQUIVALENT), GFCI RECEPTACLE PER MANUFACTURER'S RECOMMENDATION.
 - 144 COORDINATE MOUNTING HEIGHT WITH EQUIPMENT'S MANUFACTURER.
 - 147 CONNECTION T FOOD WASTE DISPOSAL. PROVIDE WITH MANUFACTURER PROVIDED START/STOP/LINE DISCONNECT SWITCH.



10/25/2018 4:13:23 PM
 C:\rent\Projects\1919D_Edneville_Elem\ET7_jarsh\ENY\CA1