



- KEY NOTES**
- 15 1" CONDUIT TO BE RUN UNDER SLAB AND TURN UP AT NEAREST FULL WALL HIDDEN FROM VIEW TO ELECTRICAL ROOM. COORDINATE DIRECT ROUTING WITH STRUCTURAL ELEMENTS.
 - 25 PROVIDE 4" X 2-1/8" X 1 7/8" (MINIMUM) BACKBOX AND CONDUIT FROM MOTOR CONTROLLER TO MOTOR CONTROLS SWITCH. COORDINATE FINAL LOCATION WITH HCPS.
 - 26 PROVIDE 4" X 4" X 1/2" (MINIMUM) JUNCTION BOX IN CEILING FOR CONNECTION TO MOTORIZED PROJECTOR. COORDINATE FINAL LOCATION WITH HCPS.
 - 36 PROVISION FOR SECURITY HEAD-END EQUIPMENT TO BE LOCATED PER HCPS. COORDINATE WITH OWNER PRIOR TO RUNNING CONDUIT AND WIRING.
 - 37 PROVISION FOR INTERCOM CENTRAL RACK AND EQUIPMENT TO BE LOCATED PER HCPS. COORDINATE WITH OWNER PRIOR TO RUNNING CONDUIT AND WIRING.
 - 39 CONNECTION TO OUTDOOR UNIT-3 LOCATED ON THE ROOF.
 - 96 OVER-THE-RANGE MICROWAVE TO BE INSTALLED AND COORDINATED WITH ARCHITECTURAL SECTIONS PRIOR TO INSTALLATION FOR FINAL LOCATION.
 - 97 DISHWASHER RECEPTACLE. COORDINATE FINAL LOCATION WITH ARCHITECTURAL PLANS PRIOR TO INSTALLATION.
 - 120 CONNECTION FROM OUTDOOR UNIT ON ROOF.
 - 149 RECEPTACLE FOR SMART BOARD MONITOR. COORDINATE FINAL LOCATION PRIOR TO INSTALLATION WITH HCPS. SEE SHEET E-001 FOR ADDITIONAL INFORMATION.

HENDERSON COUNTY SCHOOLS
EDNEYVILLE ELEMENTARY SCHOOL
 2875 PAGE ROAD
 HENDERSONVILLE, NC 28792

DESIGNER
CLARK Nexsen
 301 College Street, Suite 300
 Asheville, North Carolina 28801
 828-232-0606
 www.clarknexsen.com

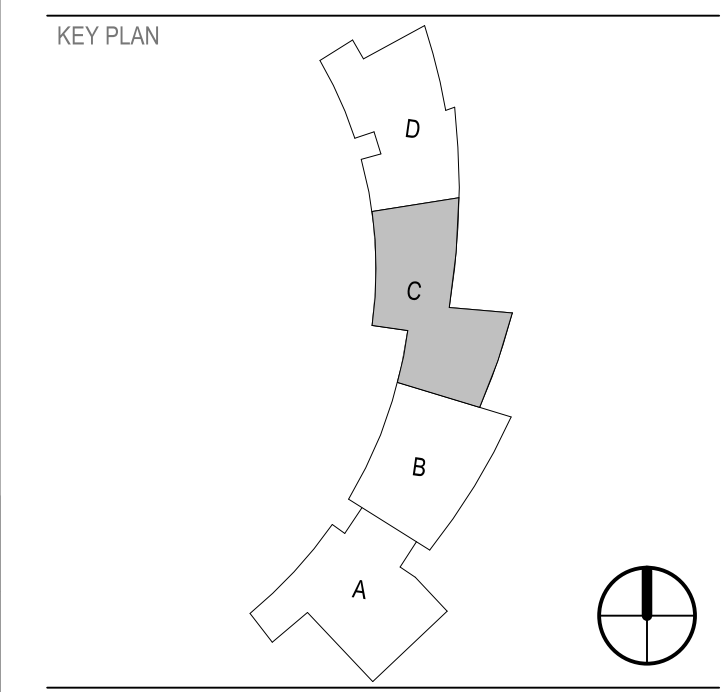
SEALS

2018.10.25 16:15:40-04107

SUBMITTAL
 06.04.2018
ISSUED FOR CONSTRUCTION

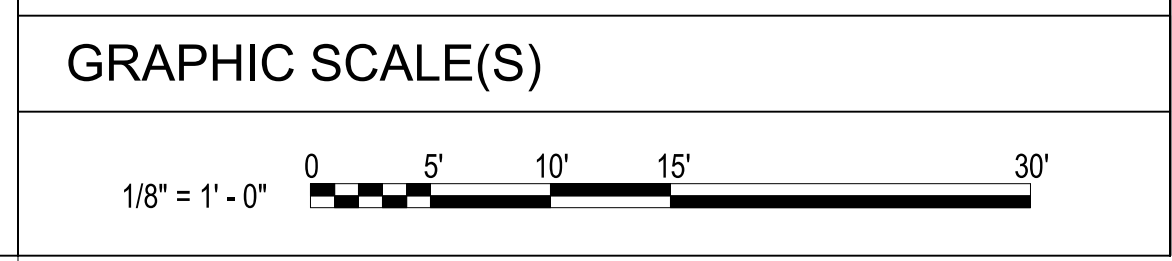
REVISIONS

NO.	DATE	REVISION
1	06.04.18	Revision 1
3	7/20/2018	Revision 3
8	10/25/18	Revision 8



RATED PARTITION LEGEND

	ONE HALF HOUR FIRE RATING
	ONE HOUR FIRE RATING
	TWO HOUR FIRE RATING
	SMOKE BARRIER (SB), SMOKE PARTITION (SP), OR PARTITION CAPABLE OF RESISTING THE PASSAGE OF SMOKE (S)



A1 MAIN LEVEL POWER PLAN - AREA C
 1/8" = 1'-0"

DESIGN: JAR
 DRAWN: JAR
 REVIEW: PJR

CN
 5199.D

10/25/2018 4:13:11 PM
 C:\rent\Projects\191901_Edneyville_Elem E17_jar\A1/EP105.dwg