



PROPOSED GREENWAY NETWORK OVERVIEW

Priority Greenways:

- Ecusta Trail
- French Broad Greenway
- Oklawaha Greenway

Greenways:

- Existing Greenways
- NCDOT Multi-Use Paths*
- Cane Creek Greenway
- Hooper's Creek Greenway
- Meritor Greenway
- Destination Greenways
- Mills River Valley Trail
- Flat Rock Greenway

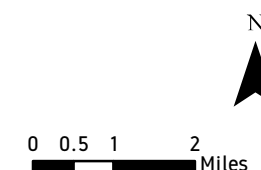
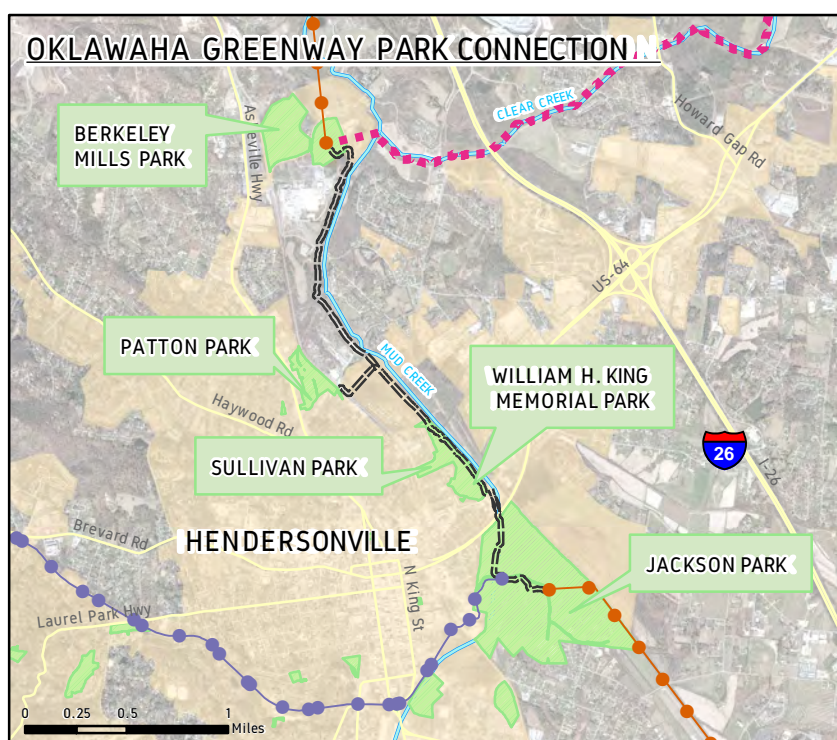
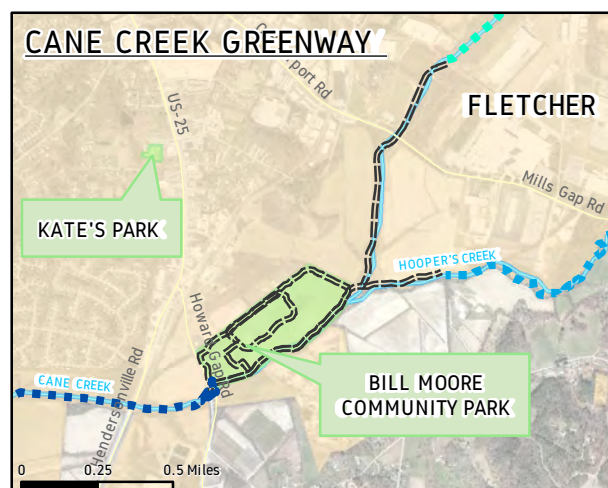
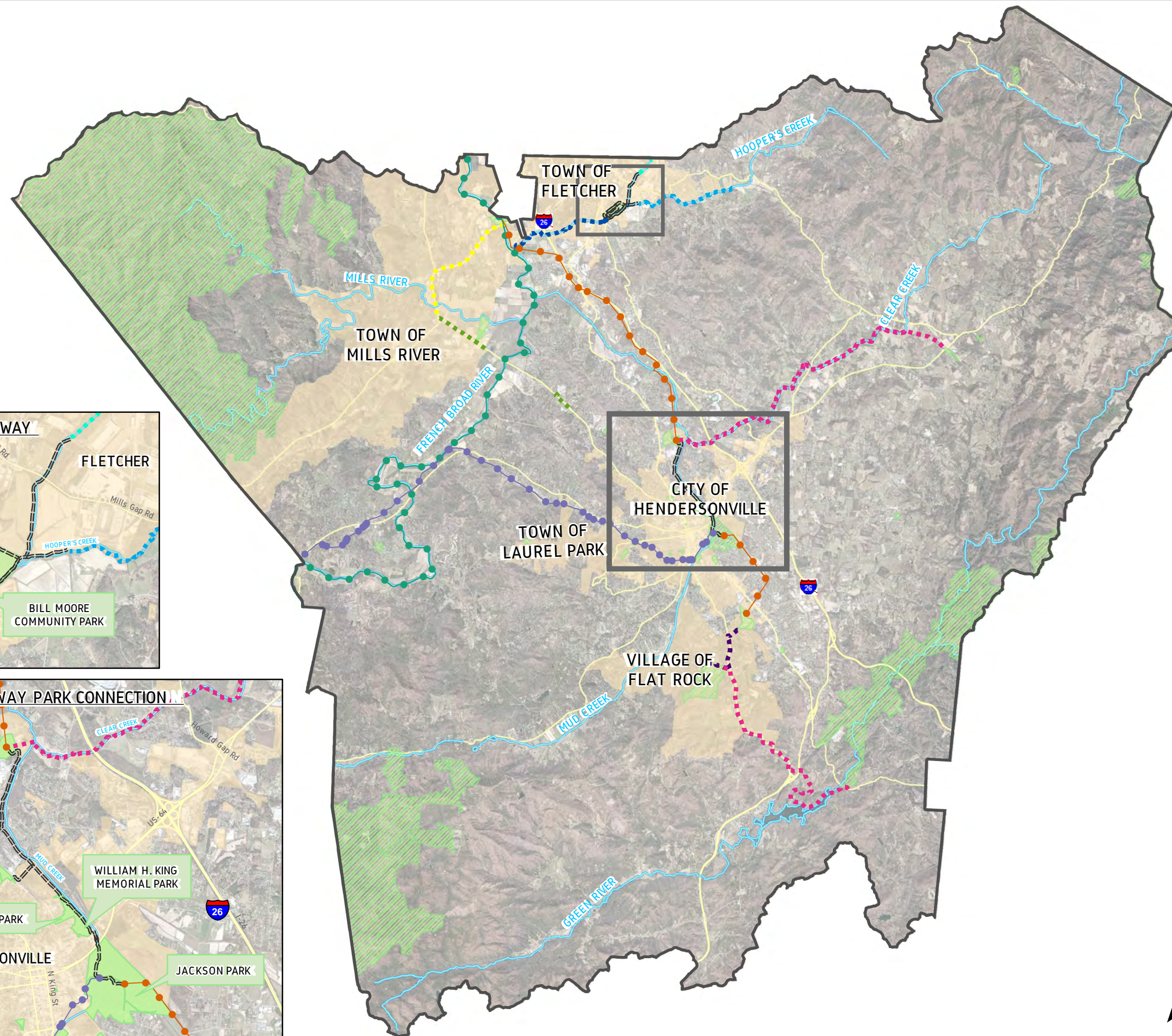
Elements:

- Parks**
- Major Rivers/Streams
- Major Roads
- County Boundary

*Multi-Use Paths are to be constructed as part of the Hwy 191 widening project.
**Parks include county parks, city parks, state parks/forests, and national parks/forests.

Please note that all greenways delineated in this map are representative of desirable locations to make greenway connections. The mapped lines of non-existing greenways are theoretical in nature.

This map was prepared from inventory of real property, recorded deeds, plats, and other public records and data. Users of this map are hereby notified that the public, primary information sources should be consulted for verification of the information contained on this map. The County and mapping company assume no legal responsibility for the information contained on this map.





PRIORITY GREENWAYS

Priority Greenways:

Ecusta Trail

French Broad Greenway

Oklawaha Greenway

Greenways:

Existing Greenways

Elements:

Parks

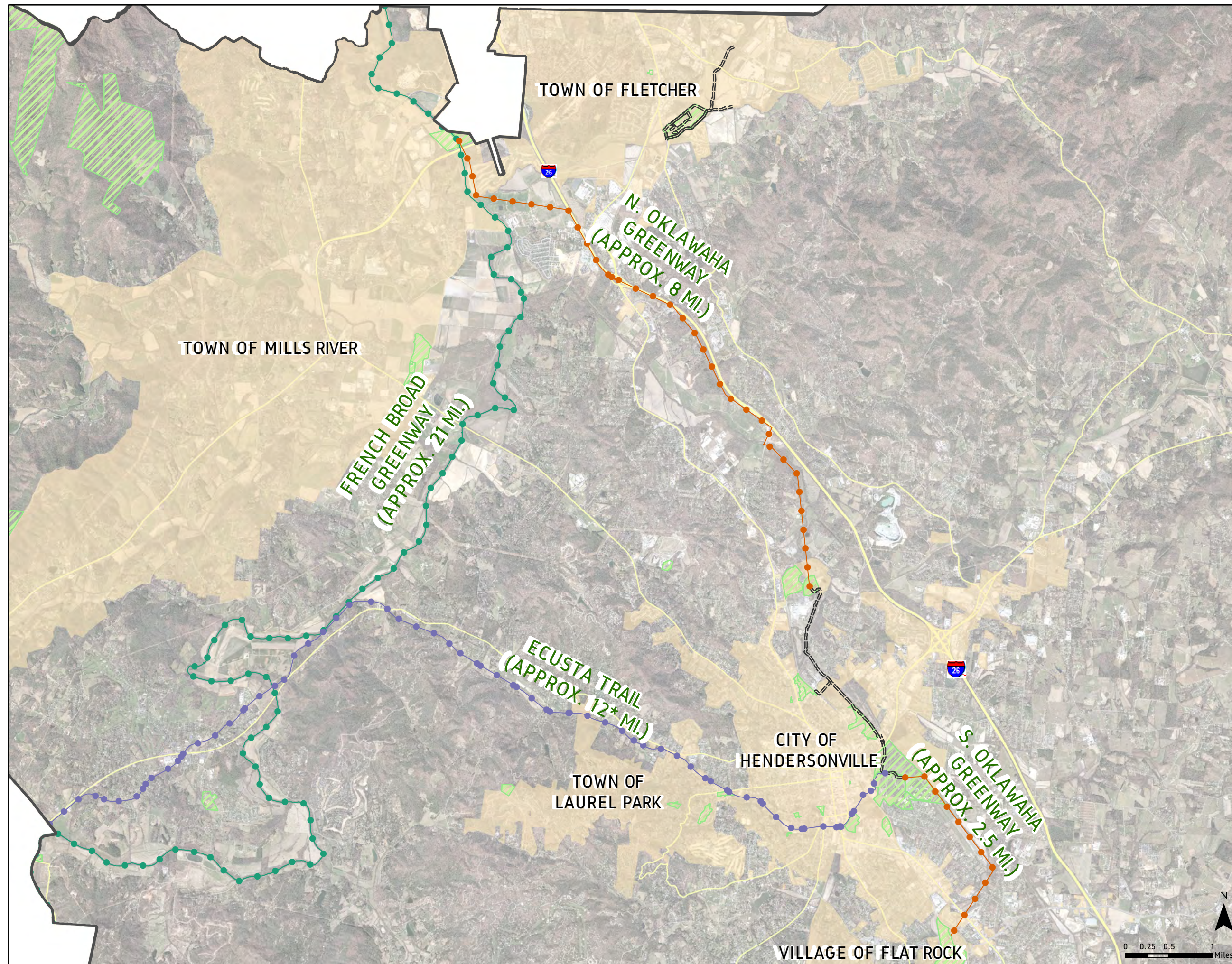
Major Roads

County Boundary

*The approximate mileage for the Ecusta Trail only includes what is proposed for Henderson County.
**Parks include county parks, city parks, state parks/forests, and national parks/forests.

Please note that all greenways delineated in this map are representative of desirable locations only. The mapped lines of non-existing greenways are theoretical in nature.

This map was prepared from inventory of real property, recorded deeds, plats, and other public records and data. Users of this map are hereby notified that the public, primary information sources should be consulted for verification of the information contained on this map. The County and mapping company assume no legal responsibility for the information contained on this map.





PROPOSED DESTINATION GREENWAYS

GREENWAYS:

- ===== EXISTING GREENWAYS
- DESTINATION GREENWAYS
- NCDOT MULTI-USE PATHS**
- MILLS RIVER VALLEY TRAIL
- FLAT ROCK GREENWAY
- CANE CREEK GREENWAY
- HOOPER'S CREEK GREENWAY
- MERITOR GREENWAY

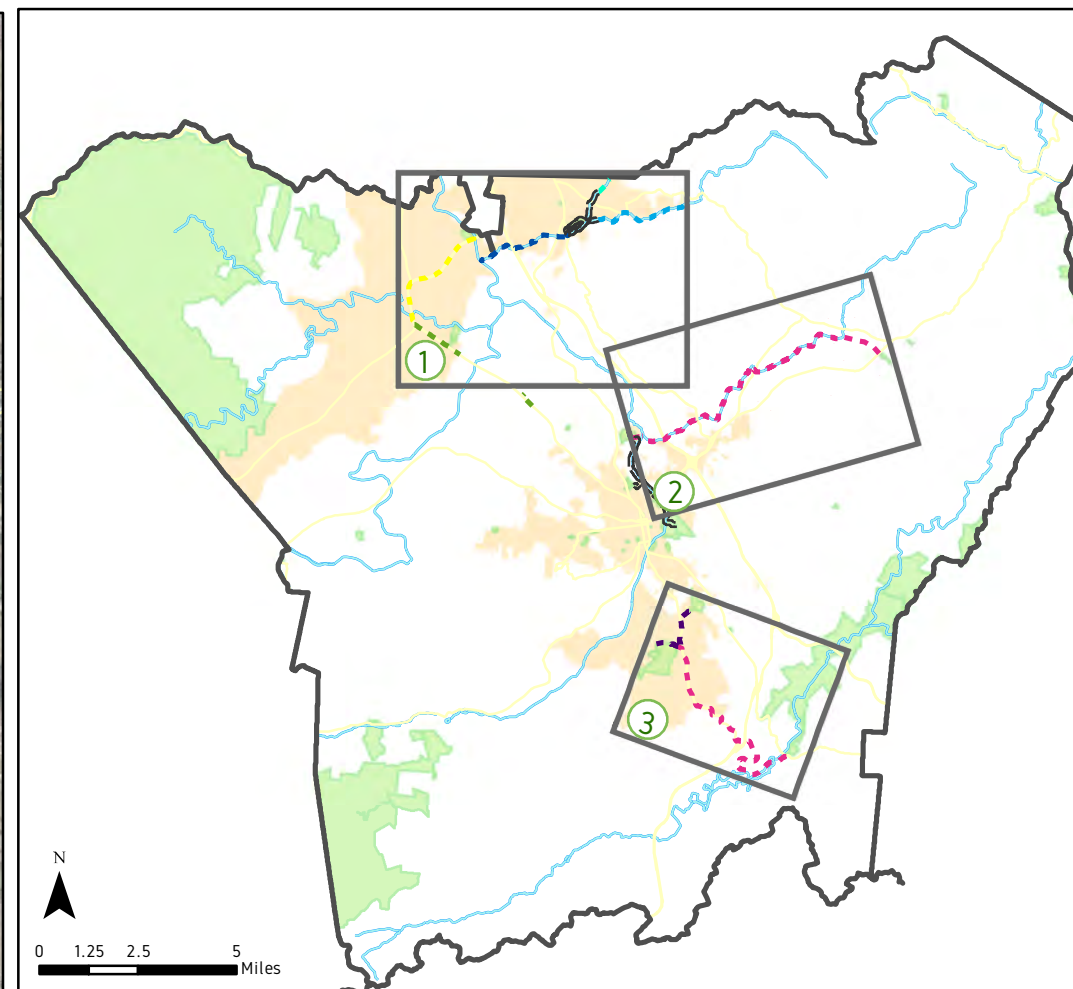
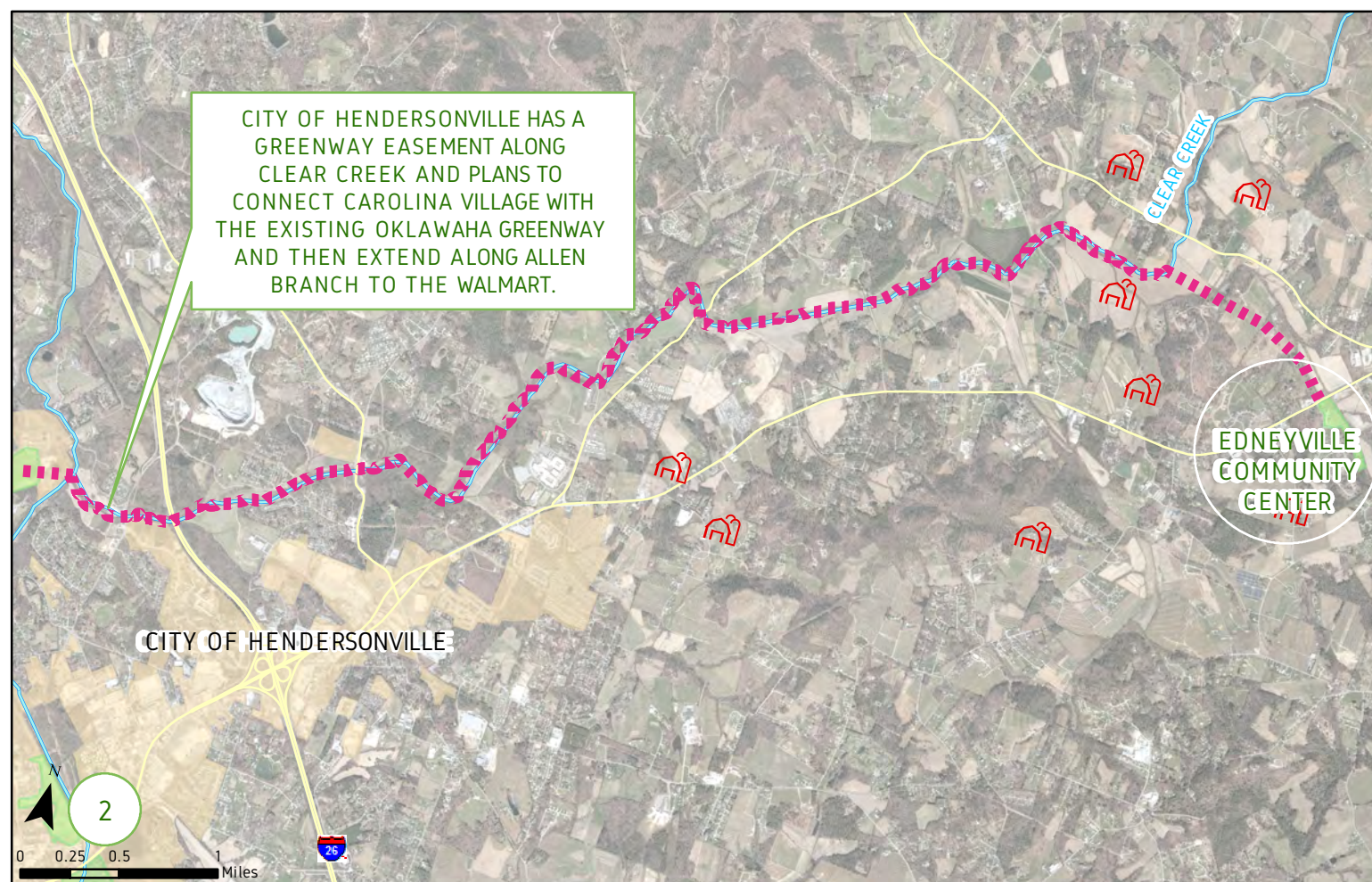
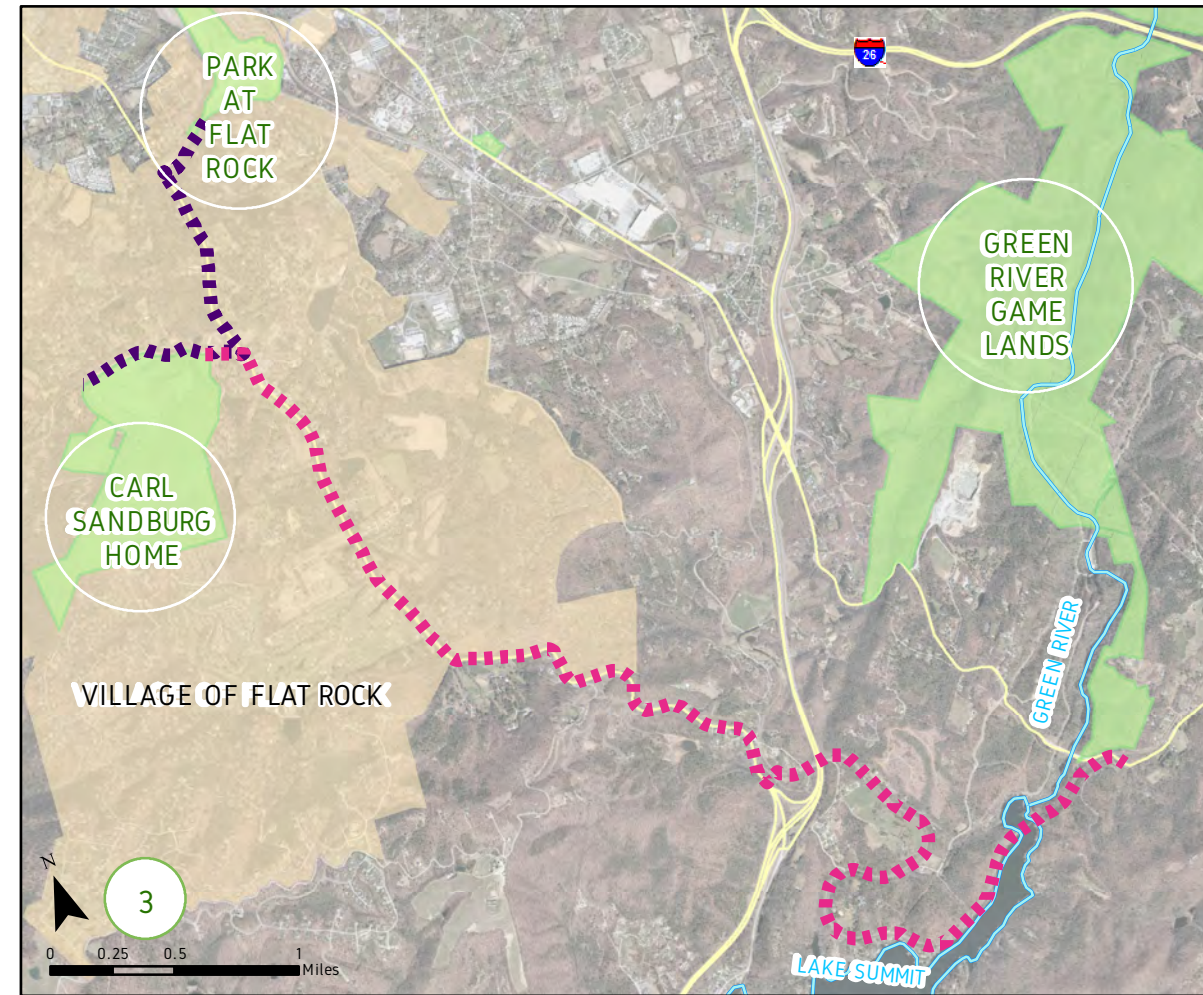
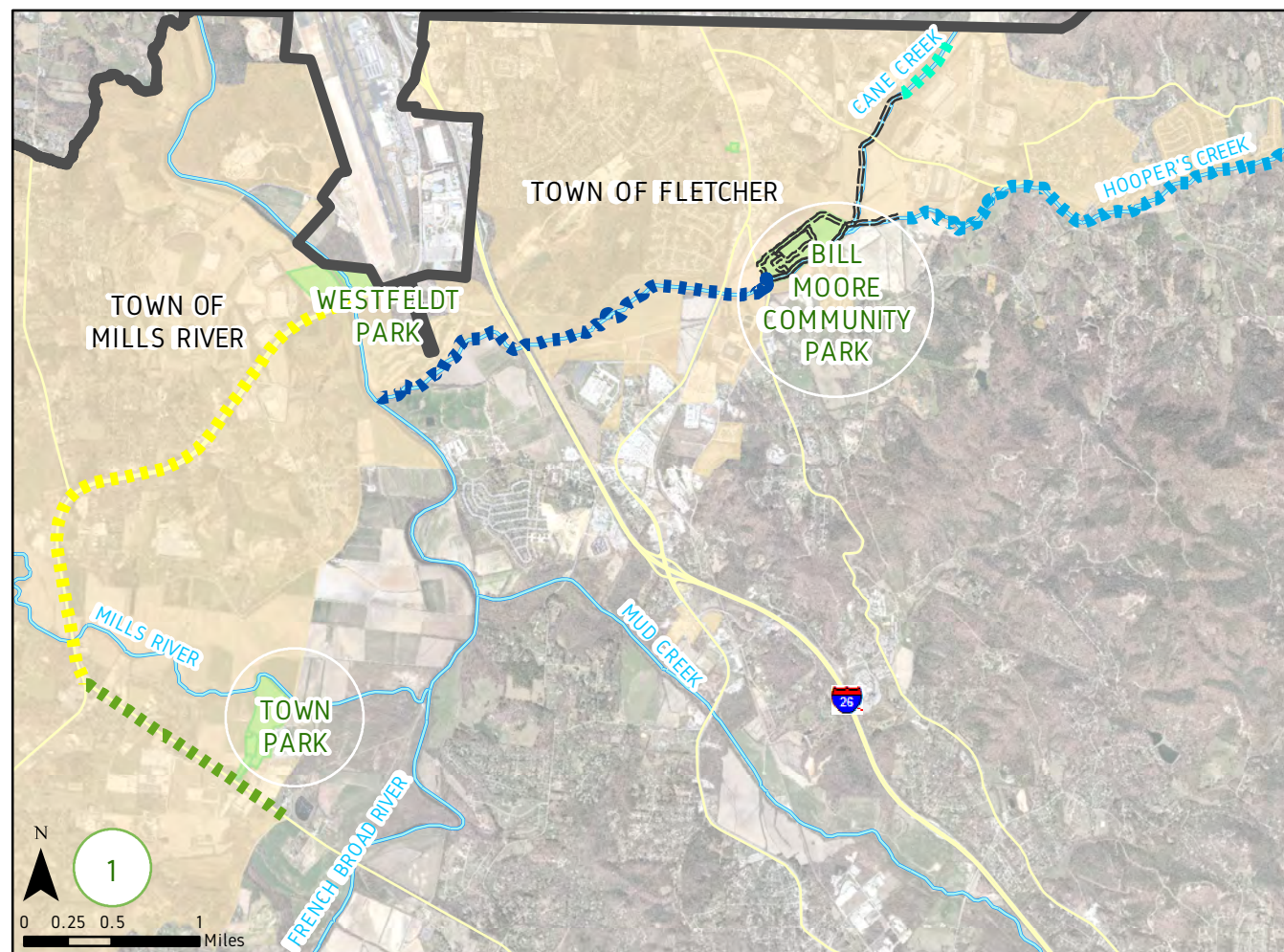
ELEMENTS:

- PARKS**
- FARMS***
- MAJOR ROADS
- MAJOR RIVERS/STREAMS
- MUNICIPALITIES
- COUNTY BOUNDARY

*Multi-Use Paths are to be constructed as part of the Hwy 191 widening project.
**Parks include county parks, city parks, state parks/forests, and national parks/forests.
***Farms are a representation of popular farms and orchards that are accessible to the public. Not all farms are captured in this map. All locations are approximate.

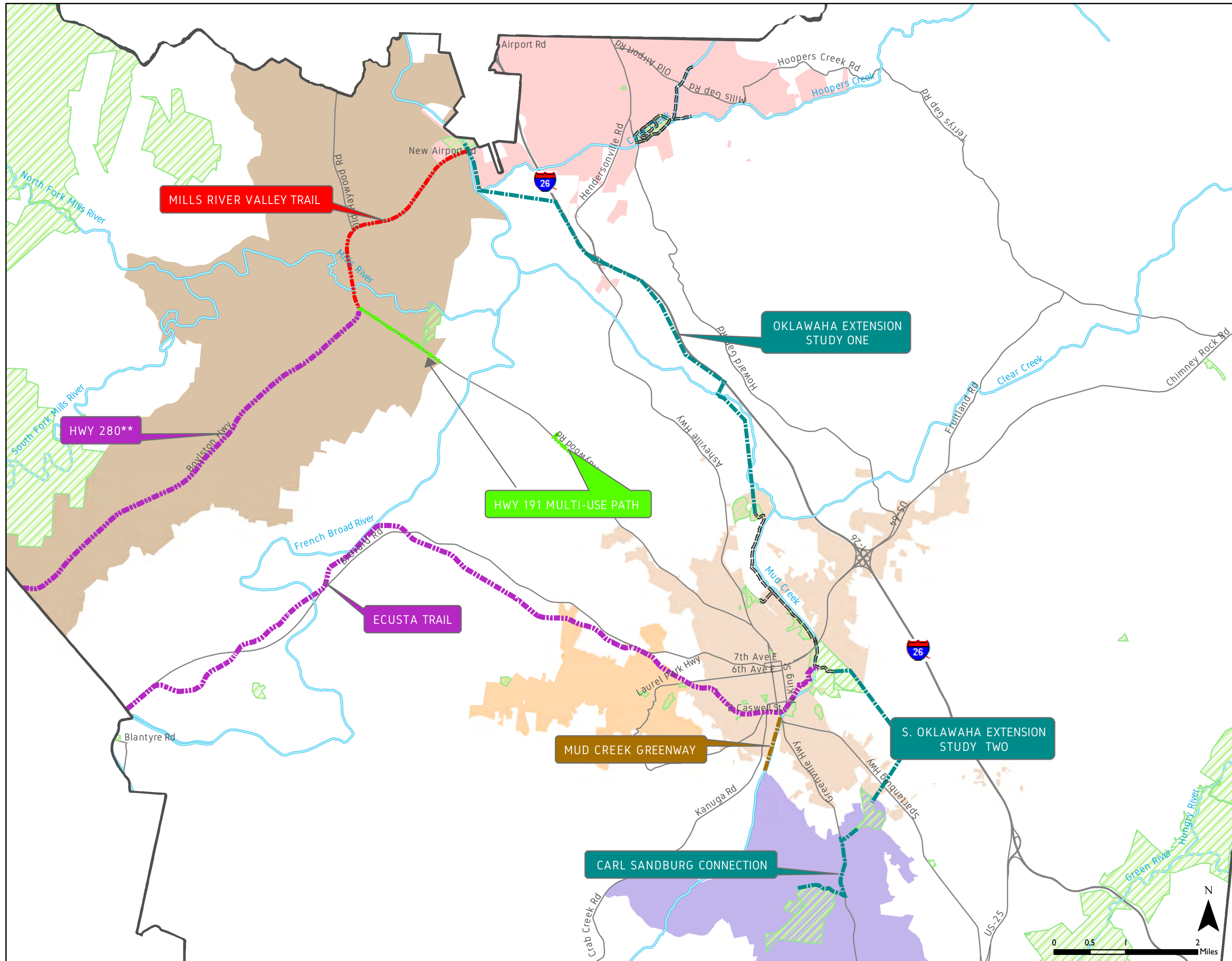
Please note that all greenways delineated in this map are representative of desirable locations to make greenway connections. The mapped lines of non-existing greenways are theoretical in nature.

This map was prepared from inventory of real property, recorded deeds, plats, and other public records and data. Users of this map are hereby notified that the public, primary information sources should be consulted for verification of the information contained on this map. The County and mapping company assume no legal responsibility for the information contained on this map.





STATUS OF FEASIBILITY STUDIES IN THE AREA



*Parks include county parks, city parks, state parks/forests, and national parks/forests.
**The feasibility study completed for Hwy 280 was conducted by Conserving Carolina. At this time, the Town of Mills River has no plans to move the project forward.

Please note that all greenways delineated in this map are representative of desirable locations to make greenway connections. The mapped lines of non-existing greenways are theoretical in nature.

This map was prepared from inventory of real property, recorded deeds, plats, and other public records and data. Users of this map are hereby notified that the public, primary information sources should be consulted for verification of the information contained on this map. The County and mapping company assume no legal responsibility for the information contained on this map.