

REQUEST FOR BOARD ACTION

HENDERSON COUNTY BOARD OF COMMISSIONERS

MEETING DATE: August 2, 2021

SUBJECT: Edneyville Elementary Sewer Update

PRESENTER: Marcus Jones, PE

ATTACHMENTS: Presentation

SUMMARY OF REQUEST:

Prior to the Public Input Session on August 3, this agenda item provides an opportunity for the Board to receive an update on the Preliminary Engineering Report (PER) and discuss the alternatives. Note, the recent revision to the PER has two new alternatives: 3B and 5.

BOARD ACTION REQUESTED:

No Board action is requested.

Suggested Motion:

No suggested motion.

Update on Edneyville Elementary Sewer

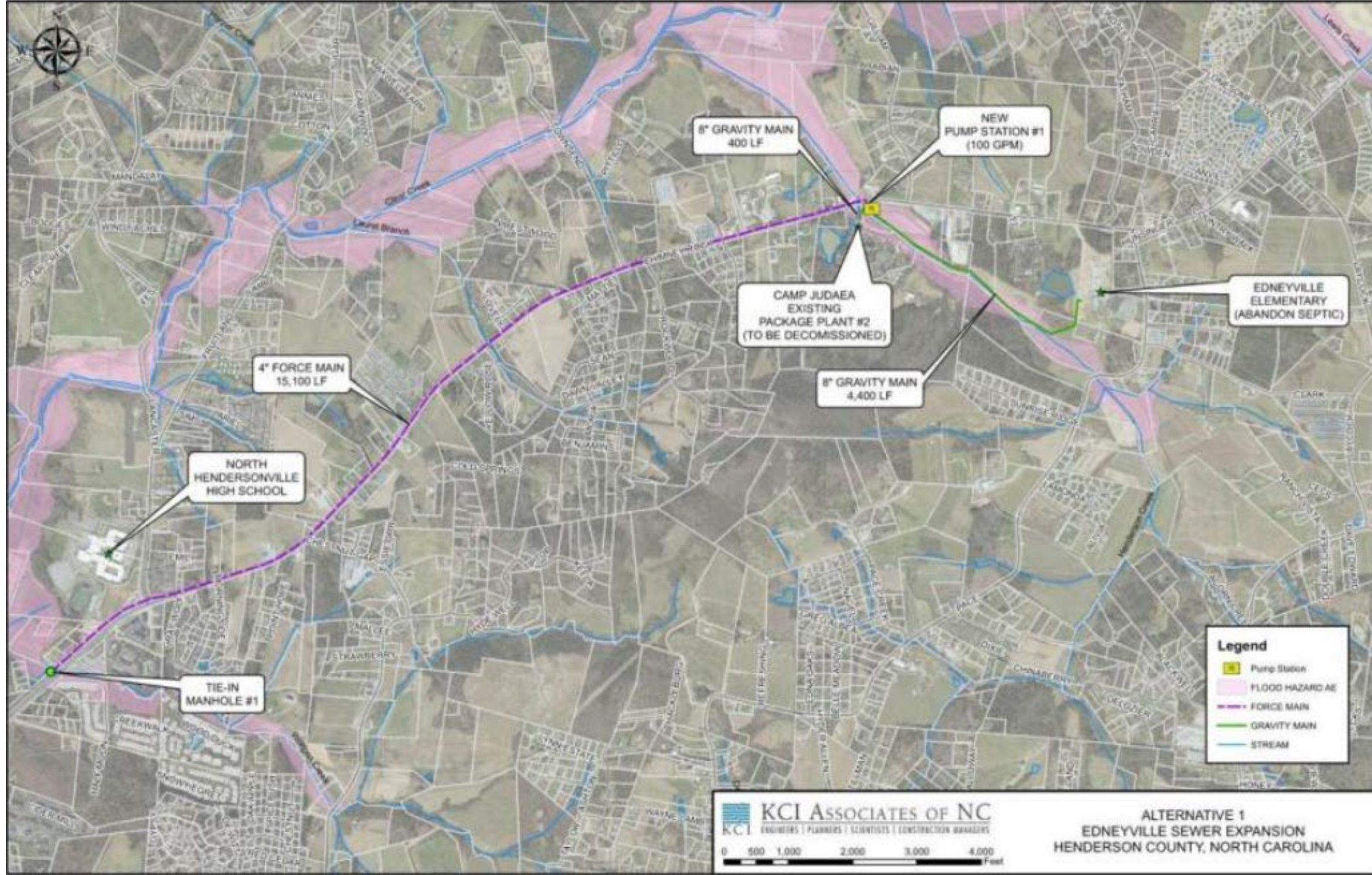
August 2, 2021

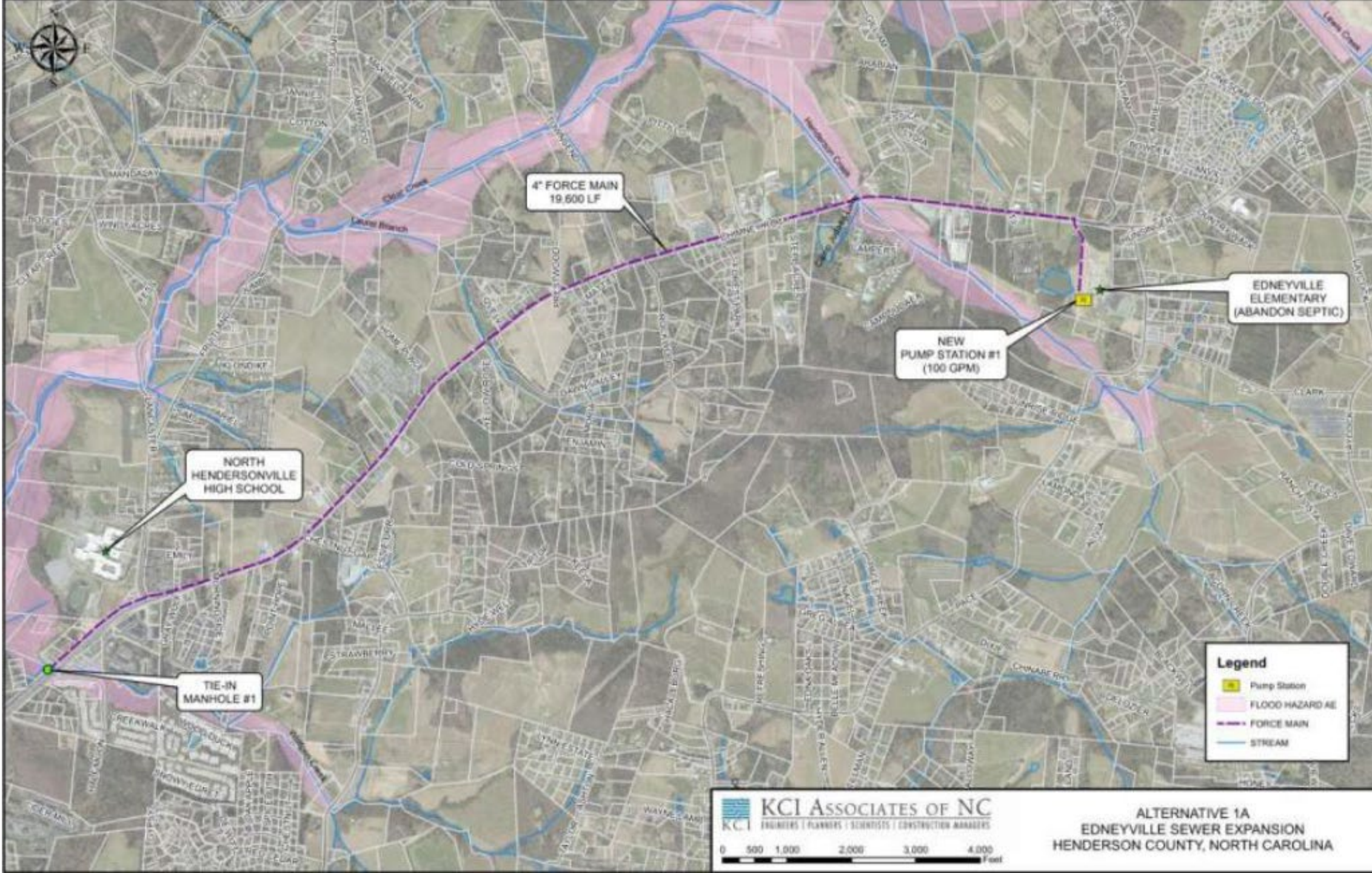
Board of Commissioners Meeting

Alternatives from KCI Preliminary Engineering Report, rev 1:

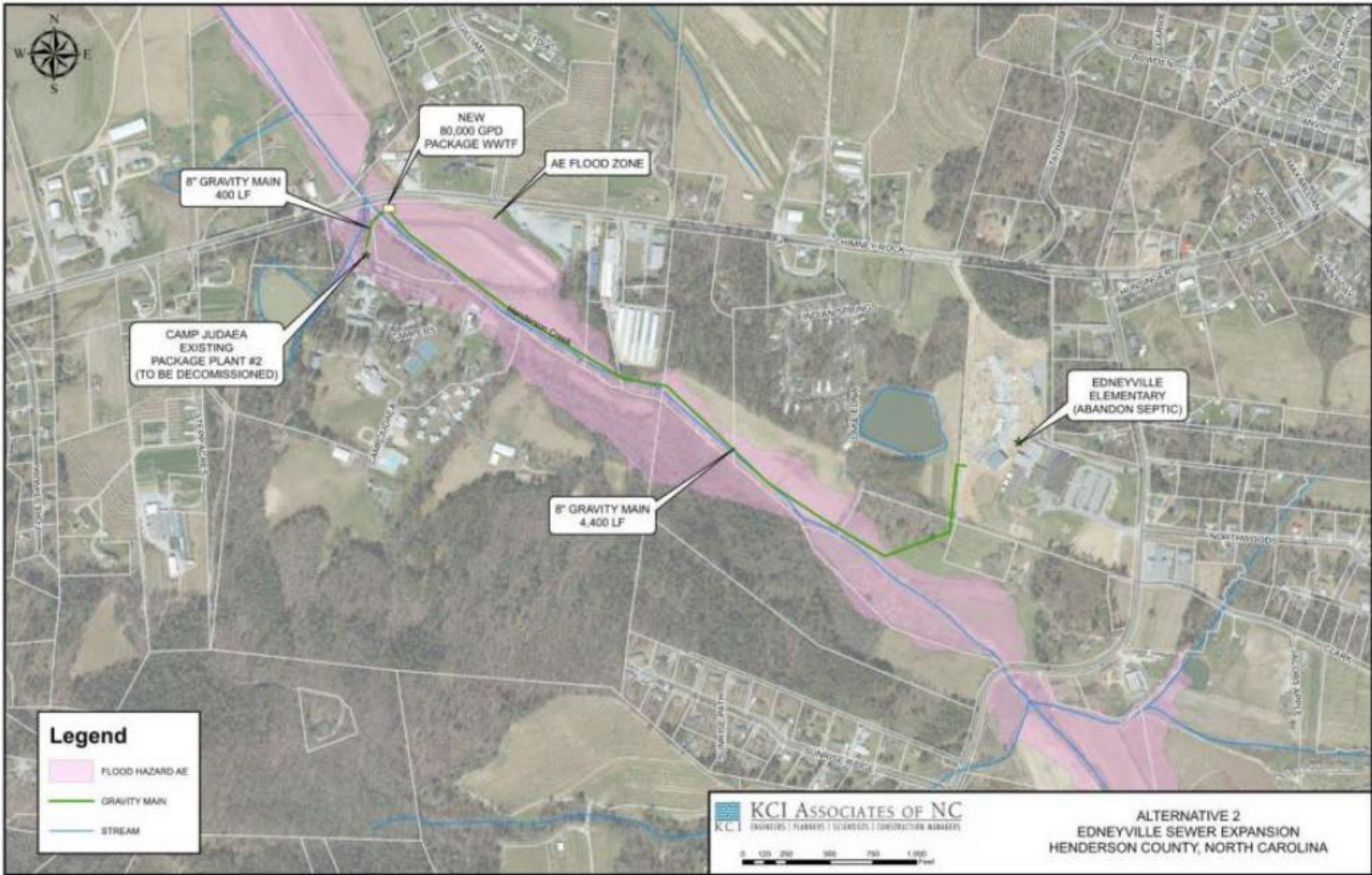
Alternative		Capital Cost ^a (\$ Million)	ADF (MGD)	Cost / Gal ^b	Wastewater Treatment Entity
1.	New PS @ Camp Judaea, Gravity from Edneyville, FM to COH	\$3.58	0.020	\$ 179.00	COH
1A.	New PS @ Edneyville Elem., FM to COH	\$2.20	0.009	\$ 244.44	COH
2.	New WWTF @ Camp Judaea, Gravity from Edneyville	\$3.44	0.020	\$ 172.00	HC
3.	3 PS Along Hwy 64, Gravity to COH	\$8.57	0.35	\$ 24.49	COH
3A.	3 PS Along Hwy 64, Gravity to COH, New PS @ WNC Justice Academy	\$9.49	0.37	\$ 25.65	COH
3B.	4 PS Along Hwy 64, Gravity to COH, Add WNC Justice Academy	\$14.7	0.80	\$ 17.16	COH
4.	Regional Gravity System from Edneyville to New WWTF@ N. Henderson High School	\$29.56	1.4	\$ 21.11	HC
4A.	Regional Gravity System from Edneyville, WNC Justice Academy & Fruitland Baptist to New WWTF @ N. Henderson High School.	\$47.32	2.1	\$ 22.53	HC
4B.	Regional Gravity System from Edneyville, New PS @ WNC Justice Academy & Fruitland Baptist to New WWTF @ N. Henderson High School.	\$33.19	1.4	\$ 23.71	HC
4C.	Regional Gravity System from Edneyville to New WWTF @ N. Henderson High School, including minor gravity sewer lines to serve developments	\$61.85	2.1	\$ 29.45	HC
5.	Regional Gravity System and New PS @ Fruitland Baptist to New WWTF at the confluence of streams near Edneyville	\$26.13	0.6	\$ 43.55	HC

\$3.58M

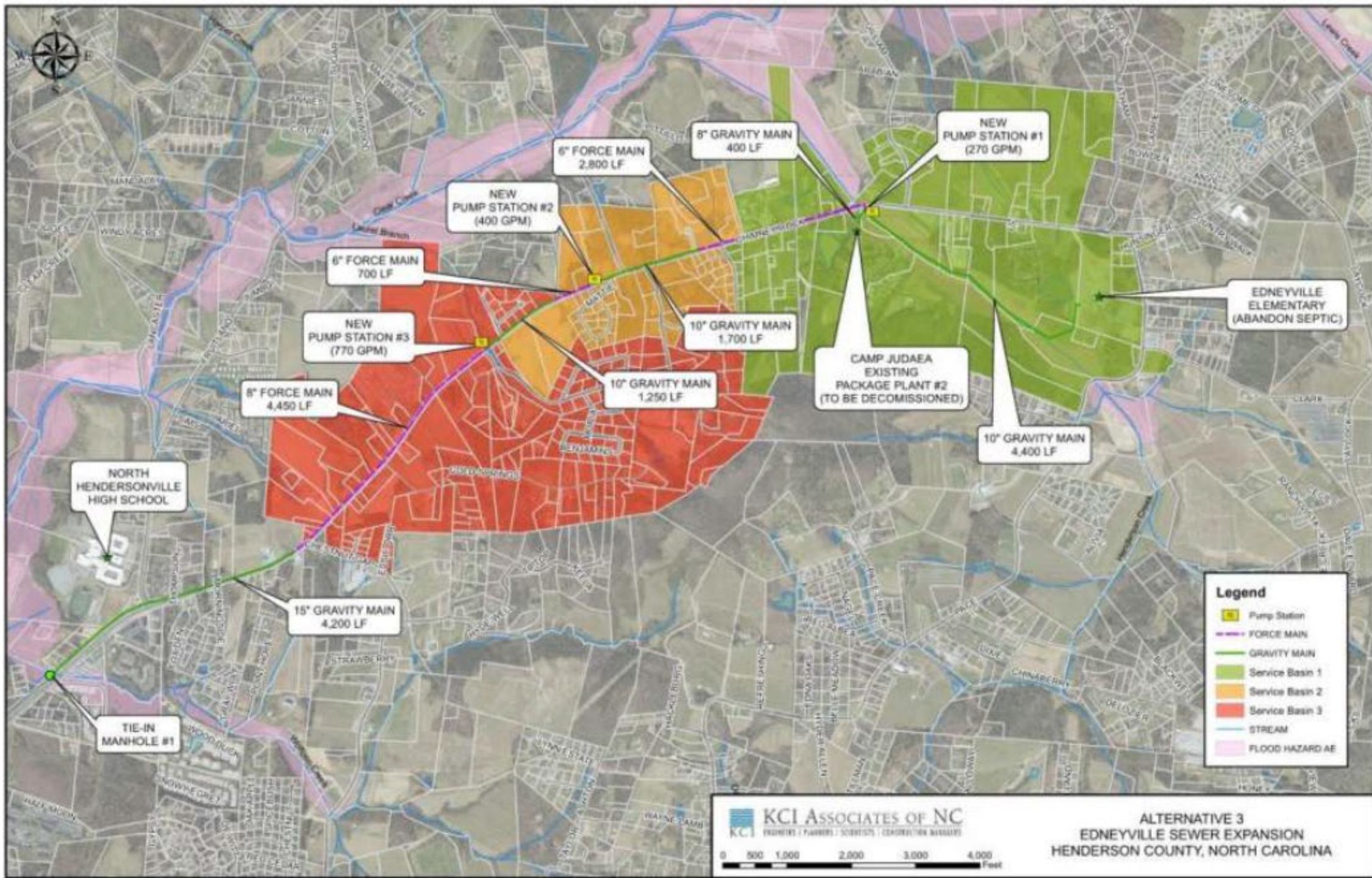




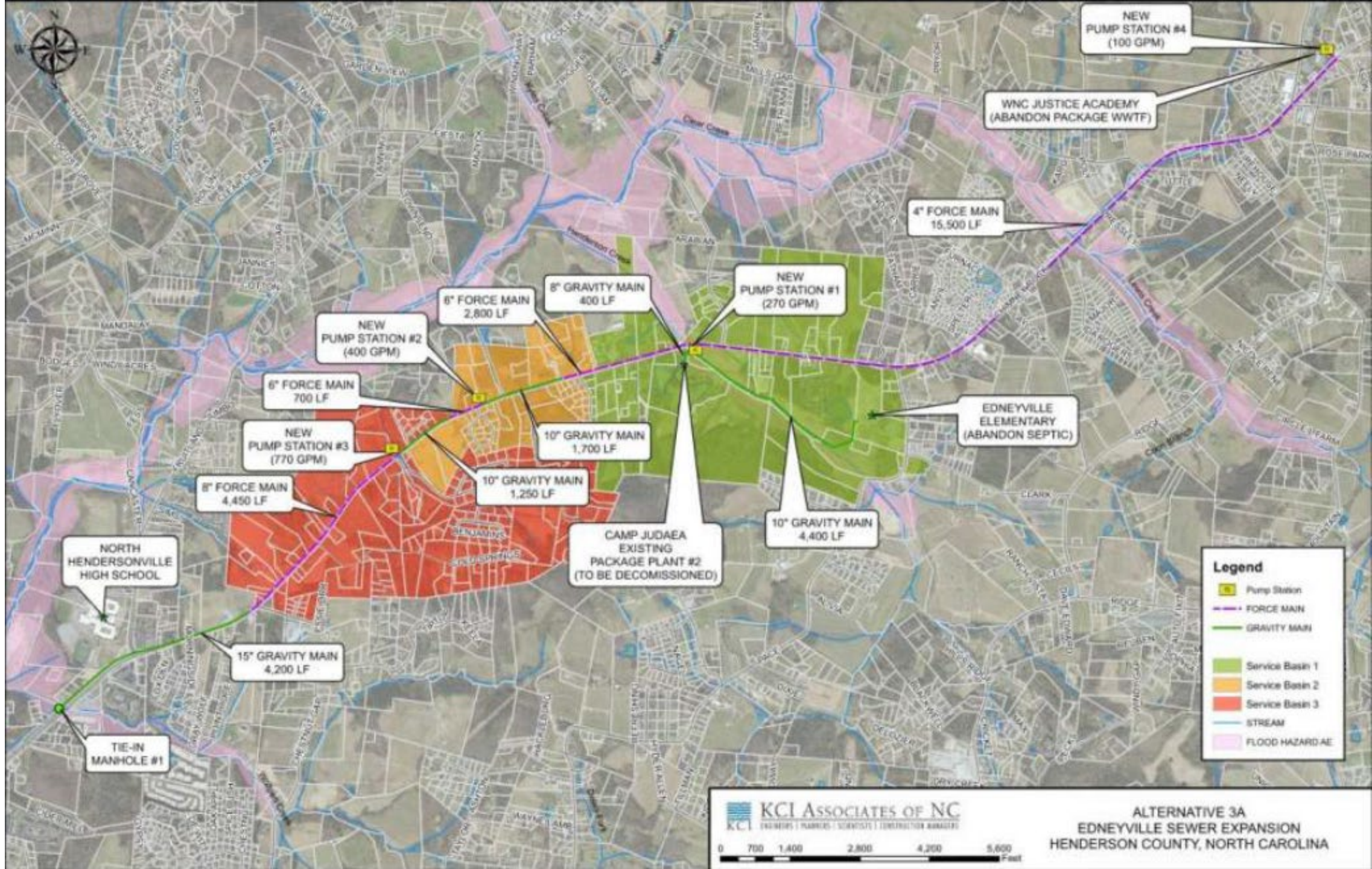
\$2.20M



\$3.44M

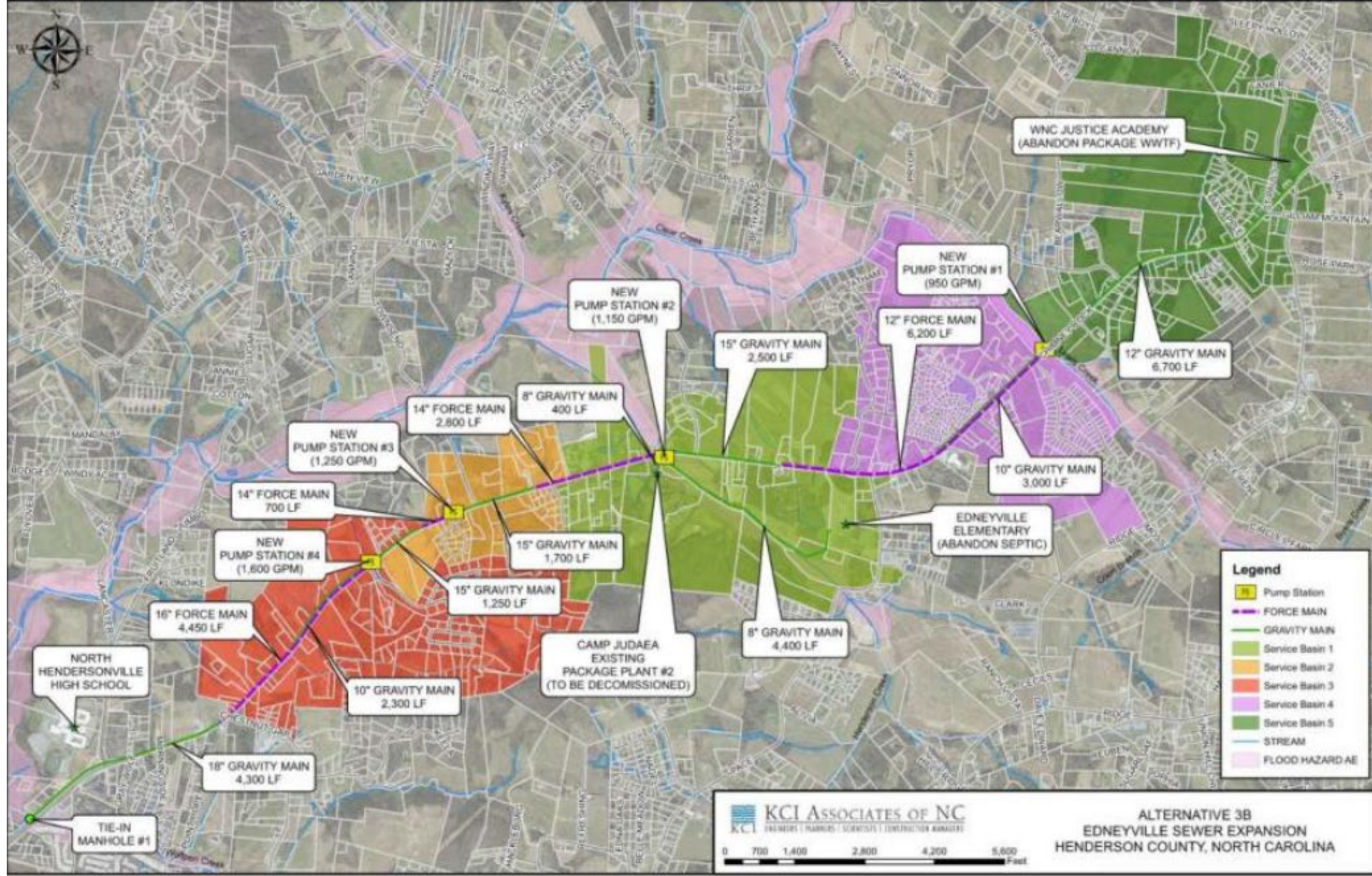


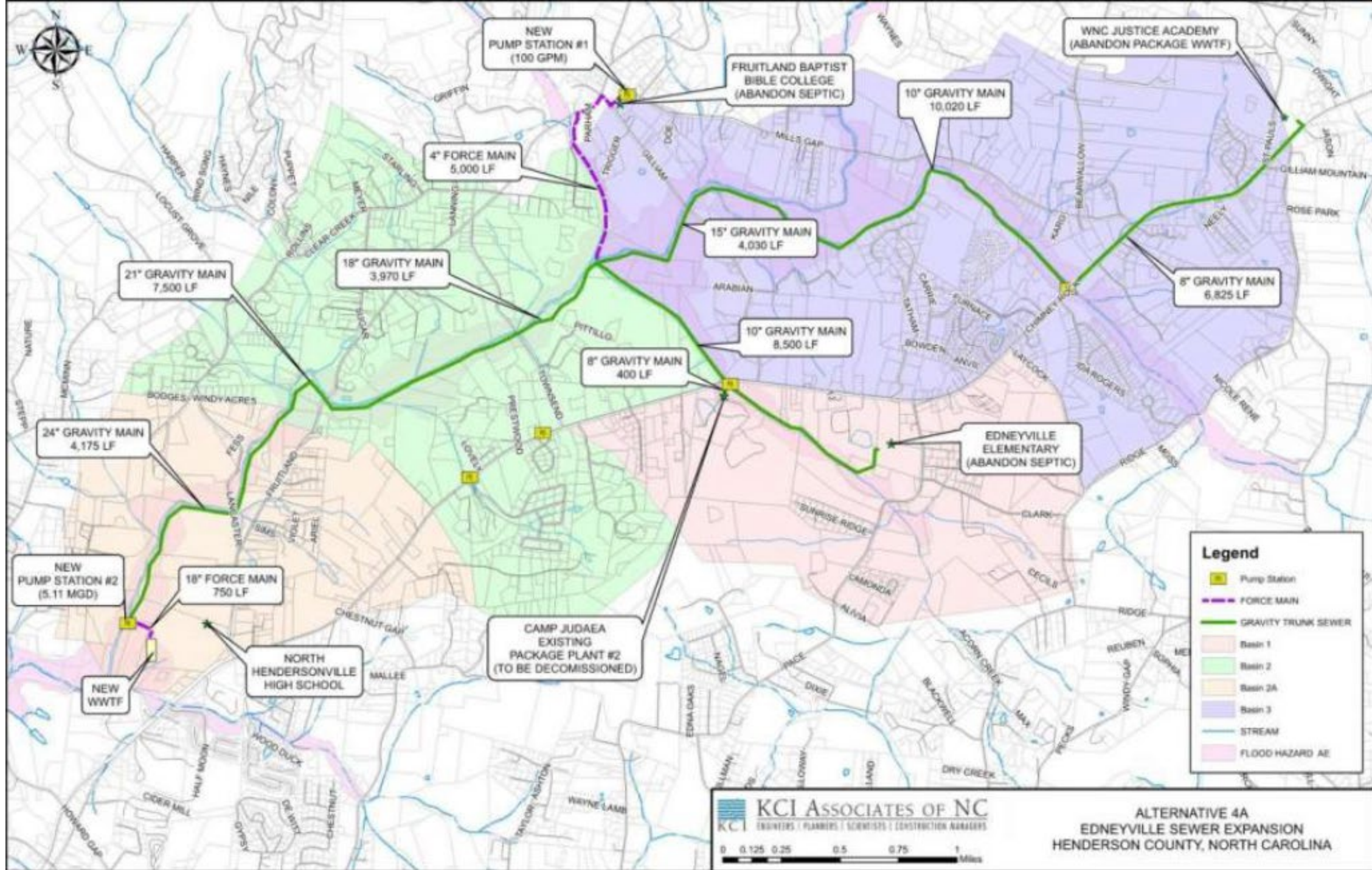
\$8.57M



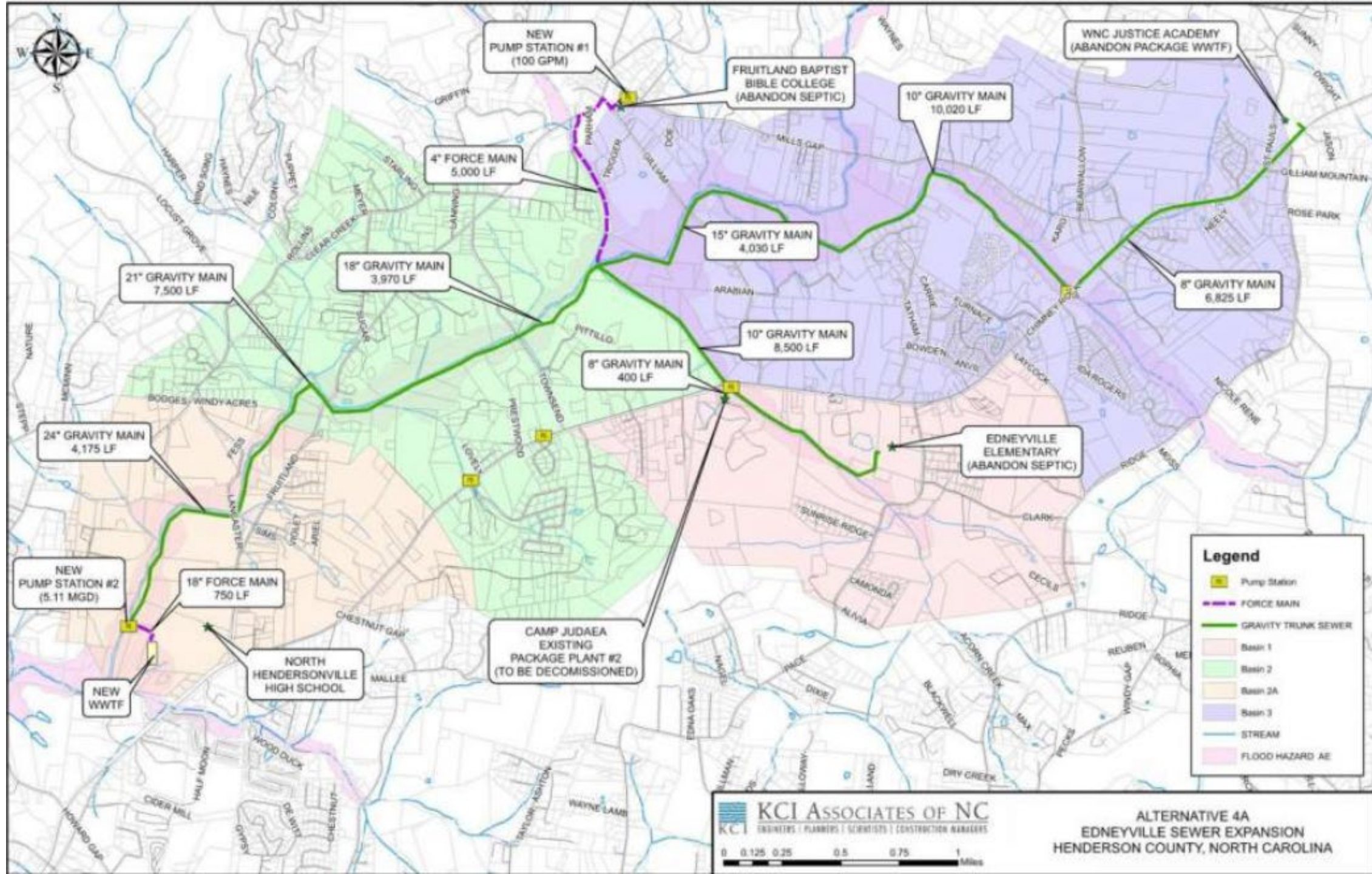
\$9.49M

\$14.7M

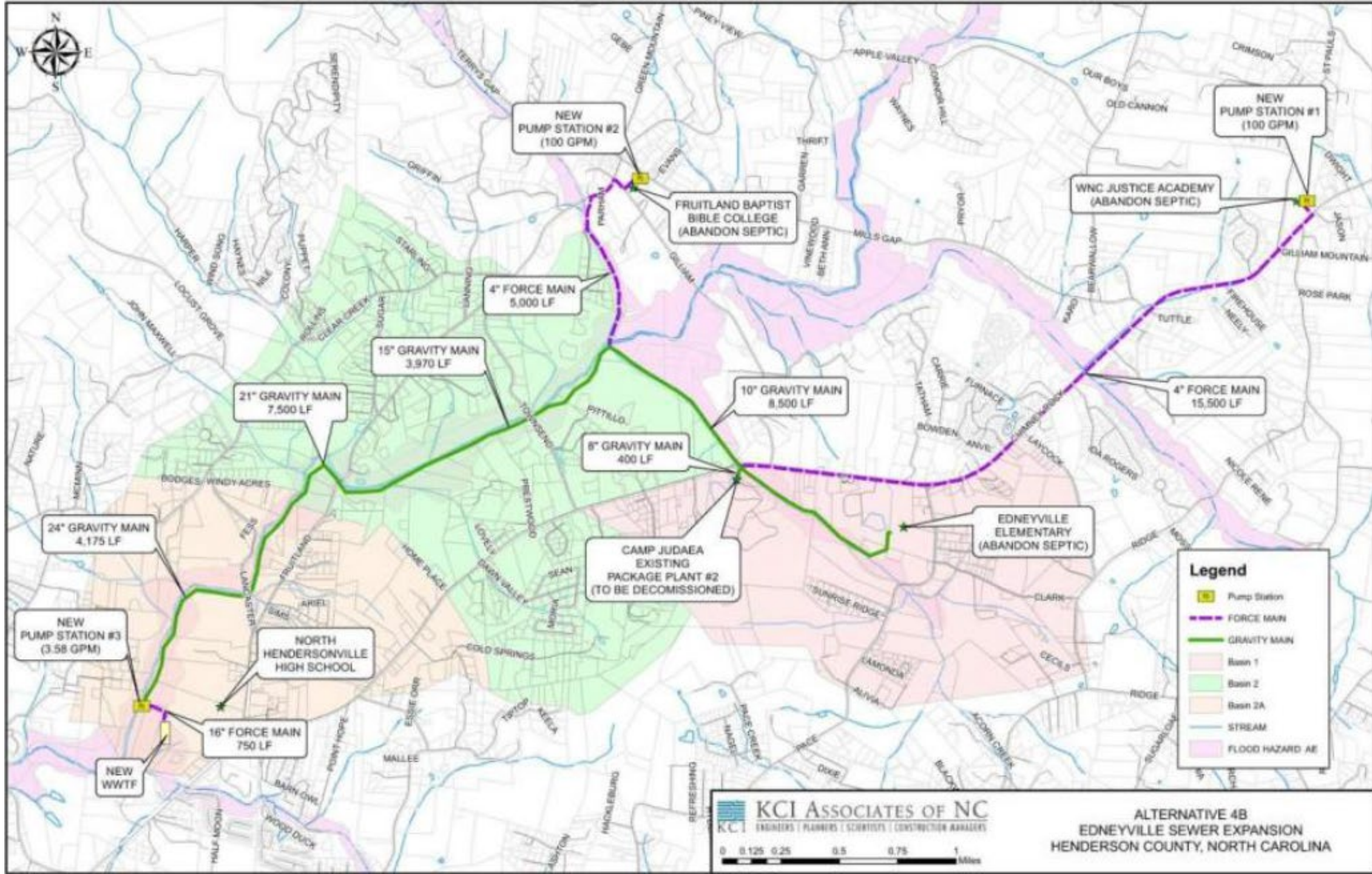




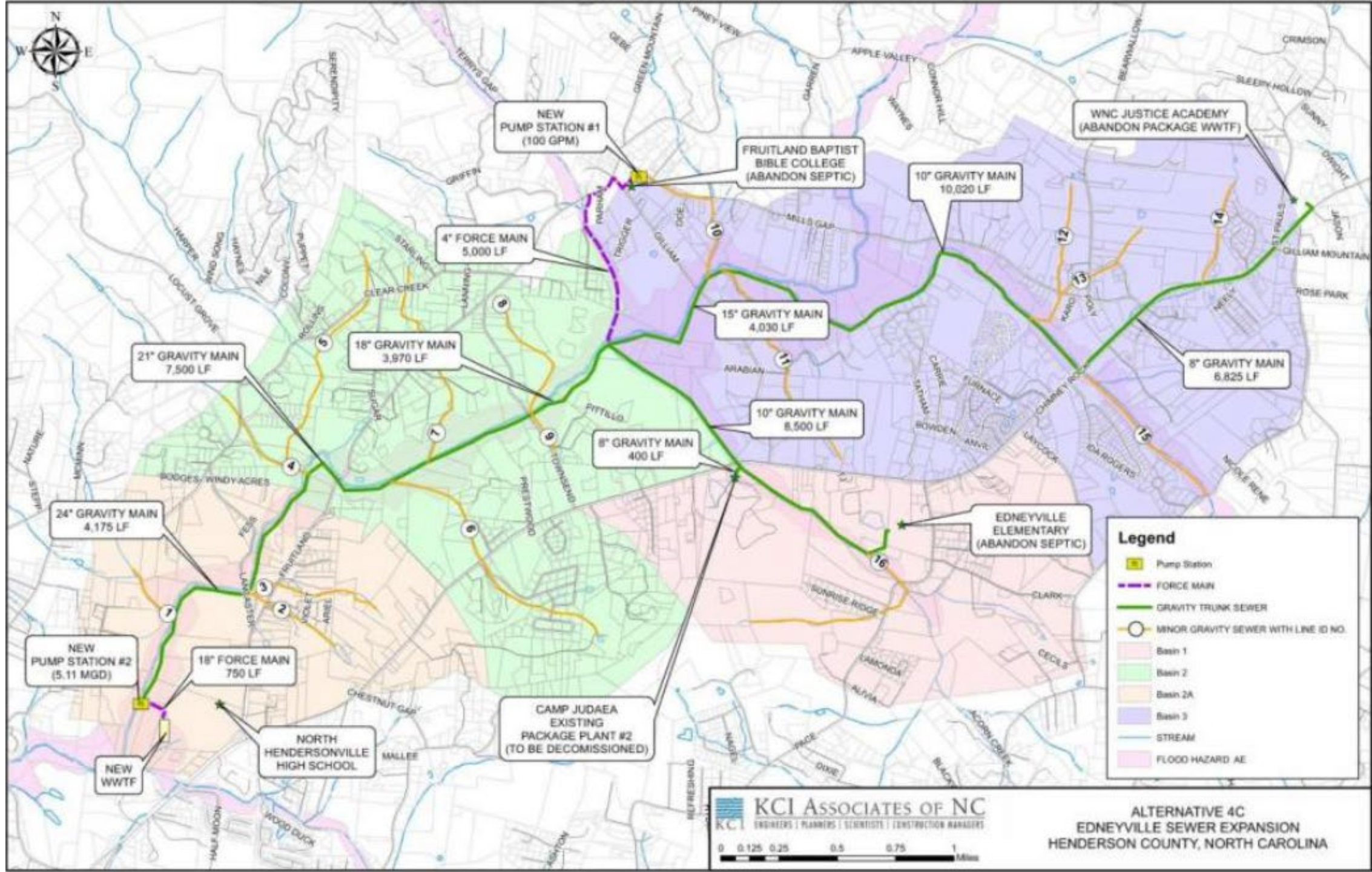
\$29.56M



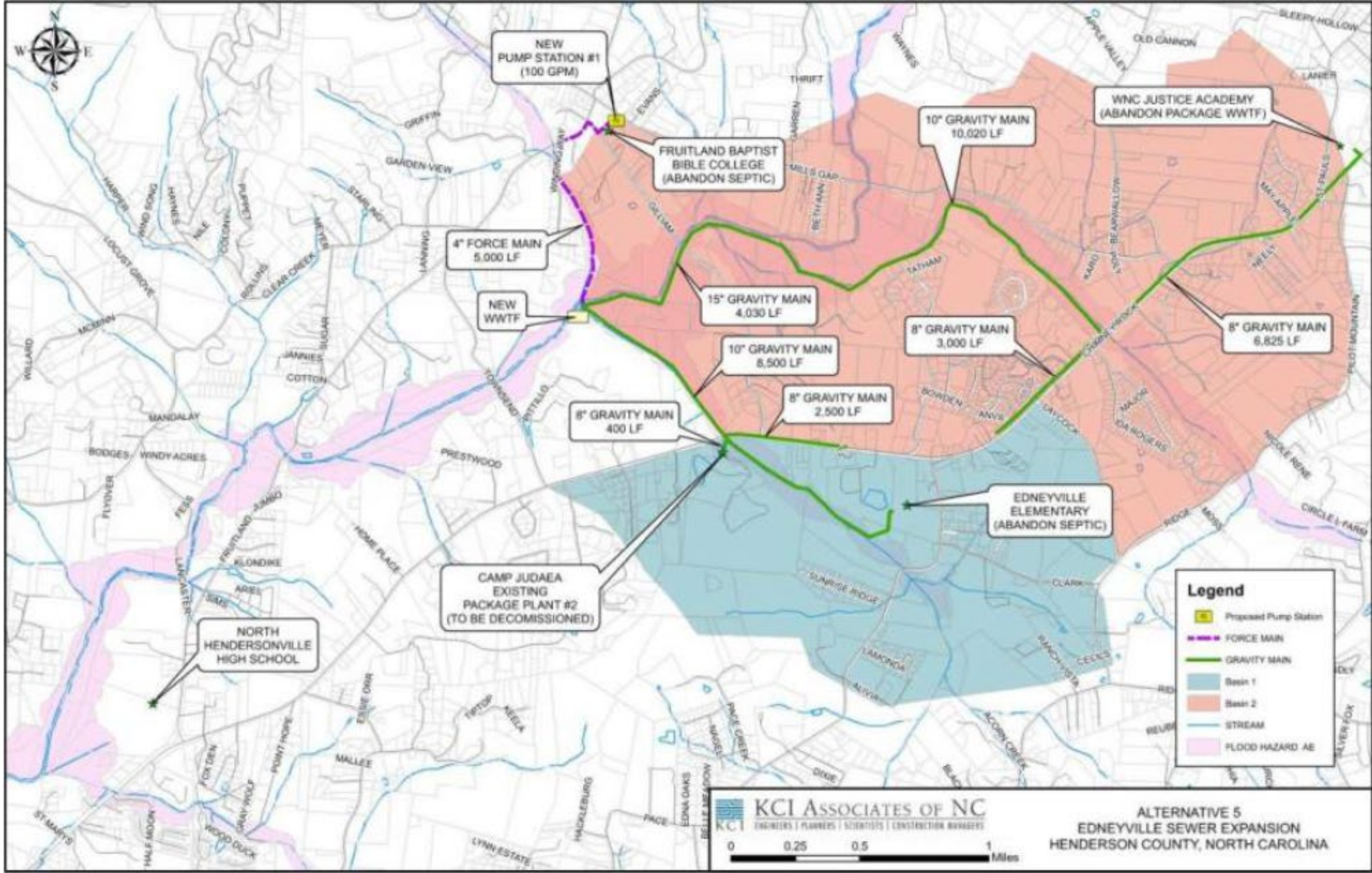
\$47.32M



\$33.19M



\$61.85M



\$26.13M

Alternatives from KCI Preliminary Engineering Report, rev 1:

Alternative		Capital Cost ^a (\$ Million)	ADF (MGD)	Cost / Gal ^b	Wastewater Treatment Entity
1.	New PS @ Camp Judaea, Gravity from Edneyville, FM to COH	\$3.58	0.020	\$ 179.00	COH
1A.	New PS @ Edneyville Elem., FM to COH	\$2.20	0.009	\$ 244.44	COH
2.	New WWTF @ Camp Judaea, Gravity from Edneyville	\$3.44	0.020	\$ 172.00	HC
3.	3 PS Along Hwy 64, Gravity to COH	\$8.57	0.35	\$ 24.49	COH
3A.	3 PS Along Hwy 64, Gravity to COH, New PS @ WNC Justice Academy	\$9.49	0.37	\$ 25.65	COH
3B.	4 PS Along Hwy 64, Gravity to COH, Add WNC Justice Academy	\$14.7	0.80	\$ 17.16	COH
4.	Regional Gravity System from Edneyville to New WWTF@ N. Henderson High School	\$29.56	1.4	\$ 21.11	HC
4A.	Regional Gravity System from Edneyville, WNC Justice Academy & Fruitland Baptist to New WWTF @ N. Henderson High School.	\$47.32	2.1	\$ 22.53	HC
4B.	Regional Gravity System from Edneyville, New PS @ WNC Justice Academy & Fruitland Baptist to New WWTF @ N. Henderson High School.	\$33.19	1.4	\$ 23.71	HC
4C.	Regional Gravity System from Edneyville to New WWTF @ N. Henderson High School, including minor gravity sewer lines to serve developments	\$61.85	2.1	\$ 29.45	HC
5.	Regional Gravity System and New PS @ Fruitland Baptist to New WWTF at the confluence of streams near Edneyville	\$26.13	0.6	\$ 43.55	HC