

REQUEST FOR BOARD ACTION

HENDERSONCOUNTY BOARD OF COMMISSIONERS

MEETING DATE: April 17, 2024

SUBJECT: NC 191 Multi-use Path Cost Share

PRESENTERS: Autumn Radcliff, Planning Director

ATTACHMENTS: 1. Cost Share Amounts
2. PowerPoint

SUMMARY OF REQUEST:

NCDOT is working on the final designs for the widening of NC 191 (R-2588B) which will include a multi-use path along one side to connect Rugby Middle School and West Henderson High School. Students walk between the schools for athletics and other school functions, so a path was identified in the initial planning documents and discussed with the schools and the county. The multi-use path will also connect to the entrance of Historic Johnston Farm. NCDOT has completed the final cost share amounts and submitted for the County's approval (see attached cost share amounts). The multi-use path does require a 50% cost share agreement with the County. The County may consider splitting the cost share amounts between fiscal years. The project also proposes a sidewalk extension along the drive entrances to West Henderson and Rugby Middle Schools that will be funded by NCDOT. The project did experience delays with tree clearing activities due to federal restrictions, so the project will let August 2025.

The Transportation Advisory Committee discussed the item and cost share amounts at its meeting on March 20th and voted unanimously to recommend that the BOC approved the cost share funding for the multi-use path as proposed.

BOARD ACTION REQUESTED:

NCDOT is requesting approval of the cost share amount for the multi-use path in Henderson County to finalize designs.

SUGGESTED MOTION:

I move that the Board approve the cost share amount for the County's portion of the Multi-use Path on NC 191, and I authorize the County sign the cost share agreement.

Project No. **50228.1.1 (R-2588B)**
 Route: NC 191 from NC 280 to SR 1381 (Mountain Rd)
 County: Henderson

Date: 3/19/2024

Multi Use Path - Henderson County							
Line Item	Des	Sec No.	Description	Quantity	Unit	Price	Amount
		520	Aggregate Base Course	1,600	TON	\$ 40.00	\$ 64,000.00
		610	Asphalt Conc Surface Course, Type S 9.5B	240	TON	\$ 100.00	\$ 24,000.00
		620	Asphalt Binder for Plant Mix	20	TON	\$ 700.00	\$ 14,000.00
TOTAL COST							\$ 102,000.00
*COST TO NCDOT (50/50)							\$ 51,000.00
*COST TO HENDERSON COUNTY (50/50)							\$ 51,000.00

Sidewalk extensions along drive entrances to West Henderson High School and Rugby Middle School							
Line Item	Des	Sec No.	Description	Quantity	Unit	Price	Amount
		848	4" Concrete Sidewalk	440	SY	\$ 65.00	\$ 28,600.00
TOTAL COST							\$ 28,600.00
*COST TO NCDOT							\$ 28,600.00
*COST TO HENDERSON COUNTY							\$ -



1

Background Information

- 2009:
 - Project originally presented in Henderson County; TAC discussed
- 2016:
 - Portion of project funded in SPOT 4.0 in the Regional Impact tier
- 2018:
 - County held 2 open house events
 - NCDOT conducted noise study
 - NCDOT gave the County an estimate for the multi-use path, both segments

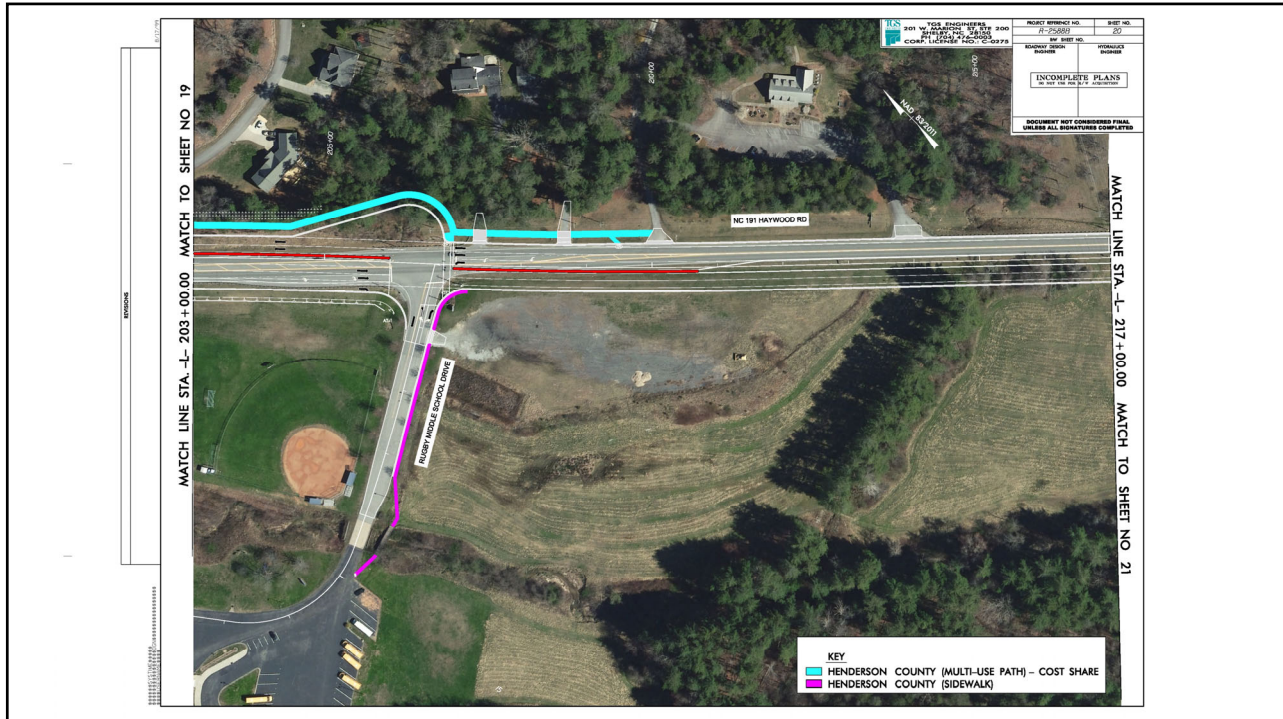
2



3



4



5

Project No. 50228.1.1 (R-2588B)
 Route: NC 191 from NC 280 to SR 1381 (Mountain Rd)
 County: Henderson Date: 3/19/2024

Multi Use Path - Henderson County							
Line Item	Des	Sec No.	Description	Quantity	Unit	Price	Amount
		520	Aggregate Base Course	1,600	TON	\$ 40.00	\$ 64,000.00
		610	Asphalt Conc Surface Course, Type S 9.5B	240	TON	\$ 100.00	\$ 24,000.00
		620	Asphalt Binder for Plant Mix	20	TON	\$ 700.00	\$ 14,000.00
TOTAL COST							\$ 102,000.00
*COST TO NCDOT (50/50)							\$ 51,000.00
*COST TO HENDERSON COUNTY (50/50)							\$ 51,000.00

Sidewalk extensions along drive entrances to West Henderson High School and Rugby Middle School							
Line Item	Des	Sec No.	Description	Quantity	Unit	Price	Amount
		848	4" Concrete Sidewalk	440	SY	\$ 65.00	\$ 28,600.00
TOTAL COST							\$ 28,600.00
*COST TO NCDOT							\$ 28,600.00
*COST TO HENDERSON COUNTY							\$ -

6