

REQUEST FOR BOARD ACTION

HENDERSON COUNTY BOARD OF COMMISSIONERS

MEETING DATE: August 3, 2020

SUBJECT: Bid Award for Purchase of (2) Spotter Trucks

PRESENTER: Marcus Jones, Director of Engineering

ATTACHMENTS:

- I. Bid Tabulation
- II. Publishers Affidavit
- III. Bid Packet for Lonestar Group
- IV. Lonestar Group Bid Exception Summary
- V. Bid Packet for Vesco Industrial Trucks

SUMMARY OF REQUEST:

The Board is requested to approve the bid for Vesco Industrial Trucks and authorize the Solid Waste Department to proceed with the purchase of 2 spotter trucks. Bidding was conducted between July 1, 2020 and July 13, 2020. The bid packet submitted by Lonestar Group was the lowest price, however, it has been deemed as nonresponsive. Lone Star Group had exceptions and omissions in their bid as shown in Attachment IV. Vesco Industrial trucks complied with all specifications and requirements as defined by the bid documents. Therefore, the Solid Waste Department requests that the award be made to the lowest, responsible, responsive bidder as per NCGS 143-129, Vesco Industrial Trucks.

The two spotter trucks were approved as part of the Solid Waste Fiscal Year 2021 budget and met the conditions for replacement. \$240,000 was budgeted in the FY2021 Budget for the purchase of this equipment. The total cost of the purchase of this equipment is \$231,000.00

BOARD ACTION REQUESTED:

The Board is requested to accept the lowest responsible, responsive bidder for the purchase of 2 spotter trucks as Vesco Industrial Trucks for \$231,000.00 and authorize Solid Waste to proceed with the purchase.

Suggested Motion:

I move the Henderson County Board of Commissioners to accept the lowest, responsive, responsible bid from Vesco Industrial Trucks for \$231,000 and authorize Solid Waste to proceed with the purchase.

**Attachment I. Bid Tabulation
Formal Bid: (2) Spotter Trucks**

Vendor Name	Description of Product Bid	Bid Price Unit Cost	Quantity	Extended Cost	Difference From Low Bid	Notes
LoneStar Truck Group	Autocar ACTT42	\$ 109,880.00	2	\$ 219,760.00		Some specification fields were left blank. Exception to GCVWR, suspension, and backup camera were major exceptions. There were additional minor exceptions
Vesco Ind Trucks	Capacity TJ9000	\$ 115,500.00	2	\$ 231,000.00	\$ 11,240.00	Compliant with all specifications



P.O. Box 1276
Hendersonville, NC 28793
Phone: (828) 698-0407
E-mail: legals@hendersonvillelightning.com
Web: hendersonvillelightning.com

July 1, 2020

Doug Guffey
Purchasing Agent
Historic Courthouse Annex
113 N. King Street
Hendersonville, NC 28792

Advertisement for Sealed Bids: 2 Spotter Trucks

I, William L. Moss, affirming the following under the penalties of perjury state:

I am editor and publisher of the *Hendersonville Lightning*, a newspaper published, issued and entered as periodical mail in the City of Hendersonville, County of Henderson and State of North Carolina. I hereby certify that the advertisement annexed hereto was published in the editions of the *Hendersonville Lightning* on the following date or dates:

7/01

And that the said newspaper in which such notice, paper, document or legal advertisement was published was, at the time of each and every such publication, a newspaper meeting all of the requirements and qualifications of Section 1-597 of the General Statutes of North Carolina and is a qualified newspaper within the meaning of Section 1-597 of the General Statutes of North Carolina.

This 1st day of July, 2020.

(Signed)

Sworn to and subscribed before me this 1st day of July, 2020.

Janet R. Chapin

Notary Public

My commission expires December 11, 2024.



ADVERTISEMENT FOR SEALED BIDS HENDERSON COUNTY

PUBLIC NOTICE

The County will accept sealed bids for the furnishing of (2) spotter trucks as specified until 3:00 PM, Monday, July 13, 2020 at the Henderson County Finance Department, 113 North Main Street, Hendersonville, NC 28792 where the bids will be publicly opened and read aloud. Bids must be sealed and visibly labeled as "Formal Bid: Solid Waste Spotter Trucks". The vehicles must conform to the specifications provided and will be awarded based upon the lowest responsive responsible bidder standard. A copy of the bid package may be obtained from the Henderson County Finance Department between the hours of 9:00 AM and 4:00 PM, Monday through Friday, excluding Holidays, or on Henderson County's website at <https://www.hendersoncountync.gov/search/site/bids>. Bidders with questions regarding specifications or the bid process may be referred to Doug Guffey, Purchasing Agent, at 828-694-5023. Henderson County reserves the right to reject any and/or all bids received, or to select the bid which, in our opinion, is in the best overall interest of the County.

Doug Guffey,

Purchasing Agent
Henderson County
Finance Department

7/01

Henderson County
Solid Waste



Formal Bid for (2) Spotter Trucks

Due Date: Monday, July 13, 2020

Time: 3:00PM EST

Location: Henderson County Finance Department

Address: 113 N. Main Street
Hendersonville, NC 28792

NOTICE AND INSTRUCTIONS TO BIDDERS

County of Henderson
Doug Guffey-Purchasing Agent
Phone: 828.694.5023
Historic Court House Annex
113 N. Main Street
Hendersonville, NC 28792

Henderson County will receive sealed bids for the furnishing of (2) spotter trucks as specified until 3:00PM EST on Monday, July 13, 2020 at the Henderson County Finance Department, 113 North Main Street, Hendersonville, NC 28792 where the bids will be publicly opened and read aloud. Bids must be sealed and visibly labeled as "Formal Bid: Solid Waste Spotter Trucks".

Equipment must meet all specifications and be the kind and type specified, or an approved equivalent and will be awarded based upon the lowest responsive responsible bidder standard. A manufacturer's build sheet of the proposed equipment shall be included in addition to the completed specifications. The total bid price must include delivery to Henderson County Solid Waste, 191 Transfer Station Dr., Hendersonville, NC 28791. Quoted price(s) should not include any sales or usage taxes but should reflect the actual bid price of the equipment.

The County will entertain bids for current model year. You must submit a separate proposal page for each type of offering with model year and style clearly defined.

If an error or omission occurs bidder(s) must submit in writing no more than seventy-two hours after the bid opening, a request to withdrawal their bid, excluding Saturdays, Sundays, or Holidays for which Henderson County offices are closed.

All motorized equipment requires 2 sets of keys and all pertinent paperwork upon delivery. This shall include invoice, certificate of origin, and odometer disclosure statement. No dealer advertisement insignia is allowed on County vehicles. Only identification is OEM plates as shipped.

The County of Henderson reserves the right to reject any and/or all bids received, or to select the bid which, in our opinion, is in the best overall interest of the County.

Complete specifications shall be included on all equipment. The bidder must meet all of the above requirements for bid to be considered.

Doug Guffey, Purchasing Agent

PROPOSAL

The undersigned, as bidder, hereby declares that this proposal is made without connection with any other person, company, or parties making a similar bid or proposal, and that the proposal is in all respects fair and in good faith, without collusion or fraud.

The bidder has carefully examined the annexed form of specifications and instructions to bidders and hereby declares that he will furnish the equipment called for in the manner prescribed in the specifications and instructions to bidders for the following price:

TYPE	DELIVERY TIME	UNIT PRICE
AUTOCAR ACTT42	JULY 2020	\$109,880.00

PLEASE NOTE BID PRICES AND SPECIFICATIONS SHALL BE FULLY ENFORCEABLE FOR 90 DAYS AFTER THE BID DUE DATE UNLESS NOTED BELOW

Warranty period: 1 Year / 3000 Hours

Lonestar Truck Group

Name of Firm Submitting Proposal

1902 Saint Michael Drive
Firm Address Texarkana, Texas 75503

903-278-1842
Telephone Number

Kenny Brown

Printed Name of Firm Representative



Signature of Firm Authorized Representative

Sales Manager

Title

Kenny.brown@tntxtruck.com

Email Address

Henderson County, North Carolina
Solid Waste
Specifications for (2) Spotter Trucks

It is the intent of these specifications to set up minimum requirements for (2) spotter trucks as specified. These specifications must be considered as minimum requirements. If it is necessary to bid alternate equipment or to take exceptions to the specifications as set forth, this must be so stated in your bid. Any reference to a model or brand is only to denote quality and does not mean that equal equipment will not be considered.

<u>I. Specifications</u>	<u>Compliance/Exception</u>
a. General	
i. Shall be 4X2	Yes
ii. GCVWR Minimum 125,001	81,000
b. Engine	
i. Cummins QSBT4-Final 6.7L 225 Horsepower, 2500 rpm turbocharged and charge air cooled	200
ii. 3-way shut down low oil PSI, High Coolant temp, low coolant level	_____
iii. Air cleaner filter	Yes
iv. Air intake engine mounted restriction gauge	Yes
v. Fan Clutch w QSBT4F	Viscous
vi. Bendix ADIP Air Dryer	AIR DRYER, unknown
vii. Fuel Water Separator, Standard, Not Heated	Yes
c. Electrical	
i. 12 Volt electrical system	Yes
ii. Group 31, 750 CCA Maintenance Free Batteries	31, 1900 CCA
iii. Battery Disconnect	NO
iv. Denso Starter	Yes
v. Multiplex Wiring	Yes
vi. Shall have a backup camera	NO
d. Cooling System	
i. Silicone Coolant Hoses	Yes
ii. 8 gallons extended life coolant	Yes
iii. Coolant recovery bottle	UNKNOWN - surge tank
e. Transmission	
i. Allison RDS-3500	RDS-3000
ii. Lever shift transmission selector	Yes
iii. Road speed governed 25 mph	33MPH
f. Steering	
i. Sheppard M-100 Steering	Yes
ii. Standard Stationary Steering Column	Yes
g. Suspension	

	<u>Compliance/Exception</u>
i. Front leaf spring (std.10L-9R)	Yes
ii. Shall have a dura ride suspension	Solid MOUNT
h. Chassis	
i. Frame structure 116" 82" (chassis)	122
ii. Front Axle Meritor FF-961 12,000 lb. capacity	Meritor 14,700
iii. Rear Axle Meritor MOR-32 12.28:1 Ratio 70,000 lb. terminal rating	Meritor RS24,000
iv. Holland Hitch FW35- 70,000 lb. lift capacity, 16" lift height	FW35FT 16"
v. Step-Style Battery Box; Bottom Step Delete	Yes
vi. Painted Black	Yes
i. Fuel Tank	
i. 50-gallon round fuel tank	Yes
j. Fifth Wheel	
i. 5 th Wheel lift height of 16"	Yes
ii. 5" diameter lift cylinders	Yes
k. Cab	
i. Left Hand Cab Drive	Yes
ii. 66" Ergo Cab	74"
iii. Cab Guards	Yes
iv. Keyed ignition	Yes
v. Backup alarm	Yes
vi. AM/FM CD Player with MP3 Input with speakers	Radio Prep
vii. Power terminal, Overhead LS	Yes
viii. Power Socket, Dash mounted	unknown
ix. 4 Point Air Ride Cab	(Yes) Neoprene Cab Bushings
x. Translucent Sun Visor	Yes
xi. Windshield washer with electric intermittent windshield wipers	Yes
xii. Color: White	Yes
xiii. Standard Steps, Grates, and Handrails Paint Safety Yellow	Yes
xiv. Standard Platform Painted White	Yes
l. HVAC	
i. 45,000 BTU Heater/Defroster	Yes
ii. Air conditioning with QSBT4i and QSTB4F	Yes
m. Lights	
i. Dome Light	Yes
ii. Standard recessed halogen head lights	Yes
iii. Recessed rear/stop lights & back-up lights-LED	Yes
iv. Five top of cab clearance lights-LED	STRABE

	<u>Compliance/Exception</u>
v. Amber strobe light	Yes
vi. Work light: One rear facing curb side platform mounted LED	Yes
vii. Work light: One rear facing driver side roof mount LED	Yes
n. Mirrors	
i. 8" Convex standard mirrors	Yes
ii. Heated Mirrors & RS Moto	Yes
o. Seat	
i. National Cushion Air Drivers Vinyl Mid back seat, Black	Seats Inc
ii. Seat Belt-Black Lap	ThreePoint Bright Orange
p. Brakes	
i. 16 1/2 X 5 Front Brakes	Yes
q. Hydraulic Pump	
i. 10 GPM hydraulic pump (standard hydraulic system)	15 GAL
r. Wheel & Tires	
i. Goodyear G399 295/75R22.5 Rib Tire, Quantity of 2 Front (Steer) and Quantity of 4 Rear	Double Coin
ii. Standard valve stems, TR-572	unknown
iii. Standard Wheels Painted White	Yes
s. Bumpers	
i. Standard Steel Bumper	Yes
ii. Shall be removeable	Yes
iii. Shall have a 50-degree taper curb side deck	unknown
iv. Painted Black	Yes
t. Fenders	
i. Flexible rear fenders	Yes
ii. Tire flaps behind drive axle	Yes
u. Hooks	
i. Front Tow Eye	Yes
ii. Rear Tow Eye	Yes
v. Gauges	
i. Voltmeter	Yes
ii. Oil Pressure	Yes
iii. Water Temperature	Yes
iv. Fuel Level	Yes
v. Air Pressure	Yes
vi. Hour Meter	Yes
vii. Speedometer	Yes

	<u>Compliance/Exception</u>
viii. Odometer	Yes
ix. High Beam Headlight indicator	Yes
x. Turn signal-Hazard Flasher indicator	Yes
xi. Low Fuel Light	Yes
xii. Low Air Light	Yes
xiii. Low Engine Oil Pressure Light & Buzzer	Yes
w. Trailer Options	
i. 12' straight trailer air hose	Yes
ii. 15' straight trailer electric cable	Yes
iii. Standard Red and blue glad hands	Yes
x. Driveline	
i. (1) Auto Drain valve (Non-Heated)	
y. Exhaust	
i. Vertical Exhaust System	Yes
ii. Exhaust Shield	Yes
z. Drain Cords	
i. Three drain pull cord	
II. Warranty	
a. Minimum 1-year warranty	Yes
III. Delivery	
a. Please deliver to Henderson County Solid Waste, 191 Transfer Station Dr., Hendersonville, NC 28791 with 2 sets of keys and an owner's manual.	
IV. Terms and Conditions	
a. For Disadvantaged Business Enterprise requirements, see Minority Business Participation Guidelines posted under Doing Business with Henderson County at https://www.hendersoncountync.gov/county/page/doing-business-henderson-county	
b. Contractors with 25 or more employees as defined in Article 2 of Chapter 64 of the NC General Statutes must verify compliance with the E-verify, NCGS 160A-20.1(b).	
c. Compliance with Purchase Order Terms & Conditions https://www.hendersoncountync.gov/county/page/doing-business-henderson-county	

Table of Contents

Chassis Specification	page 2
Dimensions	page 11
Turning Radius	page 12
Shift Chart	page 13
Operating Range	page 14
Gradeability	page 15
Startability	page 16
Top Speed	page 17

04/15/2019

Chassis Specification

		Description	Front Weight	Rear Weight	
AUTOCAR TRUCKS					
S	0040004	MODELS	ACTT42	9,815	4,010
S	5000005	CAB SHELL	ACTT SINGLE CAB	0	0
S	100T98	CUSTOMER LAYOUT	NONE	0	0
O	100U505	CUSTOMER TYPE	UNKNOWN	0	0
S	680004	NAME PLATES,STD	AUTOCAR	0	0
SOLUTION					
S	C00000	TRUCK TYPE	CUSTOM TRUCK	0	0
S	C010010	APPLICATION	TERMINAL TRACTOR - DISTRIBUTION	0	0
O	C03003	TERRITORY	CENTRAL	0	0
O	D010123	FRONT GAWR	12300 LBS	0	0
O	D020227	REAR GAWR	22700 LBS (TIRE LIMITED)	0	0
O	D100350	GVWR	35000 LBS	0	0
O	D110810	GCWR	81,000 LBS	0	0
VEHICLE ADAPTATION					
S	114010	COUNTRY OF USE	UNITED STATES STD MARKET ADAPTATION	0	0
ENGINE					
O	1580001	ENGINE VOCATION	COMMERCIAL - DOMESTIC (DOT)	0	0
O	1015005	ENGINE ASSY	B 6.7 '17, 200 HP @ 2600RPM / 520 FT-LB, CUMMINS	0	0
O	102200	ENGINE HORSEPOWER RATING	200 HORSE POWER	0	0
S	4460001	FUEL TYPE	ULTRA-LOW SULPHUR DIESEL FUEL REQUIRED	0	0
O	972A001	SPECIAL EMISSION CERTIFICATION LABELS	50 STATE - CALIFORNIA CLEAN IDLE CERTIFIED (DIESEL)	0	0
O	103T501	ENGINE OIL CHECK & FILL	EXTERIOR CHECK AND FAST LUBE OIL CHANGE SYSTEM (FLOCS)	0	0
ENGINE EQUIP					
O	P010033	VEHICLE GOVERNED SPEED LIMIT	SPEED LIMIT 33MPH	0	0
S	P020002	ENGINE IDLE SHUT DOWN	ENGINE IDLE SHUT DOWN DISABLED	0	0

Prepared By Alton Hayes
 Quote Id : Stock DOT-3.5.19
 Order : 50004710
 Lead Unit Sales Order : 50004710
 Model : 2020 - ACTT42 Class 8

Prepared For Alton Hayes
 Lone Star Truck Group

S	1290004	ENGINE ELECTRONICS	CUMMINS 500K COMMUNICATION	0	0
S	P030002	CRUISE CONTROL PARAMETER	CRUISE CONTROL DISABLED	0	0
S	132034	ENGINE PROTECT SYSTEM/WARNINGS	AUDIBLE/VISUAL ALARM/LOP, HT, LWL	0	0
O	4385002	FILTER-FUEL, CHASSIS MOUNTED	FLEETGUARD FS SERIES F/W SEP W/HEATER, PROBE & DASH LIGHT	0	0
S	1700003	FILTER-FUEL, ENGINE MOUNTED	SPIN-ON, ENGINE MOUNTED	0	0
S	1750001	ENGINE OIL	STANDARD ENGINE OIL	0	0
O	1800001	ENGINE BLOCK HEATER	PHILLIPS 120V, 750W	5	0
O	1810004	HEATER RECEPTACLE LOCATION-ENGINE	RECEPTACLE LOCATED AT CAB STEPS, LH SIDE	0	0
S	2000003	RADIATOR	1000 SQ. IN.	0	0
S	204002	COOLANT HOSES	SILICONE HOSES WITH STEEL TUBING	0	0
O	2080003	FAN & DRIVE-ENGINE	FAN CLUTCH, VISCOUS	0	0
S	2090001	RADIATOR COOLANT	EXTENDED LIFE COOLANT	0	0
S	2120003	RADIATOR SURGE TANK	STANDARD SURGE TANK W/ SIGHT GLASS	0	0
S	2200006	AIR CLEANER	11" TWO STAGE	0	0
O	2305001	MUFFLER SYSTEM	SINGLE VERT DPF/SCR	0	0
S	2310003	EXHAUST SHIELDS	DPF & SCR SHIELDS	0	0
O	2320011	EXHAUST STACKS	12' 6" STAINLESS STEEL STACK W/TURN OUT	0	0
O	2365000	MUFFLER SUPPORT	FRAME MOUNTED - OUTBOARD VERTICAL	0	0
S	2390007	UREA DELIVERY SYSTEM	RH FRAME MOUNTED, 5 GAL. CAPACITY	0	0
S	700026	AIR COMPRESSOR	CUMMINS WABCO 18.7 CFM COMPRESSOR	0	0
S	802114	ALTERNATOR	DELCO REMY 12V 130AMP 22SI	0	0
S	8055001	DI-ELECTRIC GREASE	ELECTRICAL RING/POST CORROSION INHIBITOR	0	0
S	8100001	BATTERY	2 BATTERIES, 31 ECL, 12V, 1900CCA	0	0
S	8200004	STARTING MOTOR	DENSO 12V STARTER	0	0

TRANSMISSION

S	2690005	CONTROL MODULE (ELECT)	UTILITY, YARD TRACTOR, GRP99, VP113	0	0
S	PT10001	TRANS DIRECTION CHANGE SHIFT INHIBIT	SHIFT INHIBIT ENABLED	0	0
O	2700021	TRANSMISSION	ALLISON 3000 SERIES, 5-	0	0

Prepared By Alton Hayes
 Quote Id : Stock DOT-3.5.19
 Order : 50004710
 Lead Unit Sales Order : 50004710
 Model : 2020 - ACTT42 Class 8

Prepared For Alton Hayes
 Lone Star Truck Group

S	284016	TRANSMISSION CONTROLS	ALLISON PUSHBUTTON CONTROLS	0	0
S	286005	COOLER-TRANSMISSION OIL	OIL TO WATER TYPE	0	0
S	290003	TRANSMISSION OIL FILL/CHECK	OIL FILL TUBE / DIPSTICK W/ LEVEL SENSOR	0	0
S	292004	TRANSMISSION LUBRICANT	TRANSYND SYNTHETIC AUTO TRANS FLUID	0	0
S	300015	DRIVESHAFT-MAIN	SPICER 1710HD HALF ROUND	0	0

FRONT AXLE

S	3700005	FRONT AXLE	MERITOR MFS-14 STEER AXLE, 14700# RATING	0	0
S	371007	FRONT SUSPENSION	6500 LB FLATLEAF 14,500 GROUND CAPACITY	0	0
S	373002	SHOCK ABSORBERS- FRONT	DOUBLE ACTING SINGLE - HEAVY DUTY	0	0
S	374002	FRONT AXLE LUBRICANT	SYNTHETIC,DANA SPICER EP75W90,OR EQUIV	0	0
S	3835001	STEERING GEAR	M100 LOW SPEED GEAR	0	0
S	384009	POWER STEERING PUMP	STANDARD P/S PUMP	0	0
S	3870001	POWER STEERING RESERVOIR	INTEGRAL WITH FIFTH WHEEL RESERVOIR	0	0

REAR AXLE

S	3300017	REAR DRIVE AXLE-SINGLE & TANDEM	MERITOR RS24-160, SINGLE REDUCTION AXLE	0	0
S	330H001	REAR DRIVE AXLE-SINGLE & TANDEM	STANDARD TRACK	0	0
S	331717	REAR DRIVE AXLE RATIO	7.17	0	0
S	330U98	REAR AXLE LUBE PUMP	NO LUBRICATION PUMP	0	0
S	339002	REAR AXLE LUBRICANT	SYNTHETIC	0	0
S	3400001	REAR AXLE BREATHER	STANDARD AXLE BREATHER	0	0
S	3500010	REAR SUSPENSION	SOLID MOUNT SUSPENSION	0	0

BRAKES

O	7410001	BRAKE CONTROL SYSTEM	BENDIX ABS WITH PLC	8	4
S	782018	BRAKE VALVE-PARKING CONTROL	TRAILER/TRACTOR PARK AND SUPPLY VALVE	0	0
O	7510004	BRAKES-FOUNDATION, FRONT AXLE	MERITOR 16.5X5 QP	0	0
S	753018	BRAKE CHAMBERS-FRONT AXLE	CAM-STANDARD	0	0
S	754009	BRAKE SLACK ADJUSTERS -FRONT AXLE	MERITOR AUTOMATIC	0	0
S	755001	DUST SHIELDS - FRT BRAKES	DUST SHIELDS - FRONT BRAKES	0	0
S	901001	BRAKE DRUM-FRONT	CAST IRON	0	0

S	7610003	BRAKES-FOUNDATION, REAR AXLE	MERITOR 16.5X7 Q PLUS	0	0
S	763019	BRAKE CHAMBERS-REAR AXLE	CAM-STANDARD	0	0
S	764012	BRAKE SLACK ADJUSTERS -REAR AXLE	ARVIN MERITOR AUTOMATIC-SINGLE AXLE	0	0
S	765001	DUST SHIELDS - REAR BRAKES	DUST SHIELDS - REAR BRAKES	0	0
S	781011	BRAKE CHAMBERS- PARKING, TYPE/VENDOR	CAM TYPE M/GM STOPGARD (2)	0	0
S	910001	BRAKE DRUM-REAR	CAST IRON	0	0

CHASSIS

O	400122	WHEELBASE	122 INCHES	0	0
S	402027	FRAME-REAR OVERHANG	27"	0	0
S	4030003	FRAME RAILS	3/8" X 13 STRAIGHT STEEL,"C"-REINFORCED, 50KSI	0	0
S	4060004	FRAME-REAR CUT-OFF	TAPER CUT-OFF, 23 DEGREES	0	0
S	3250001	HYDRAULIC TANK	15 GAL STEEL	0	0
S	3265000	HYDRAULIC FILTER	HYDAC 38GPM IN TANK FILTER	0	0
S	4090002	FRAME CROSSMEMBER- CENTER	STEEL	0	0
S	411005	FRAME CROSSMEMBER- END CLOSING	TAPER STEEL	0	0
S	4300009	FUEL TANK-LEFT	50 GAL CYLINDRICAL STEEL TANK	0	0
S	432002	FUEL TANK STRAP/ SUPPORT LEFT	PAINTED STEEL	0	0
S	435001	FUEL TANK OVERFLOW PIPE	STANDARD VENT	0	0
S	436001	FUEL LINES	SAE J844 NYLON TUBING	0	0
O	4520002	REAR DECK	BOC DECKING W/ ADDTL FUEL TANK COVER	0	0
S	4530001	STEP-BOC ACCESS	ACCESS STEPS, LH ONLY	0	0
S	4600005	BUMPER-FRONT	FRONT BUMPER, DISTRIBUTION	0	0
O	4630002	MUD FLAPS-REAR WHEEL	MUD FLAPS, NO LOGO	0	6
O	4650002	FENDERS-REAR	FULL FENDER, PLASTIC FLEX	0	0
S	4800001	TOWING DEVICE-FRONT	FRONT TOW EYES	0	0
S	4810001	TOWING HOOKS-REAR	REAR TOW EYES	0	0
S	4905004	FIFTH WHEEL	HOLLAND FW35TT (80,000 LBS) 16" LIFT	0	0
S	711001	AIR TANK-BRAKE	STEEL TANKS FOR SINGLE AXLE	0	0
S	711U98	AIR TANK MOUNTING	AIR TANKS IN STD POSITION	0	0

Prepared By Alton Hayes
 Quote Id : Stock DOT-3.5.19
 Order : 50004710
 Lead Unit Sales Order : 50004710
 Model : 2020 - ACTT42 Class 8

Prepared For Alton Hayes
 Lone Star Truck Group

O	713T001	AIR DRYER MOUNTING LOCATION	MOUNT AIR DRYER INSIDE RAIL	0	0
O	7150003	WET TANK DRAIN	CENTRAL DRAIN MANIFOLD	0	0
O	715T004	AIR RESERVOIR DRAIN SYSTEM	CENTRAL MANIFOLD W/ PULL CORDS	0	0
S	724001	AIR LINES-CAB	SAE J844 NYLON TUBING	0	0
S	728001	AIR LINES-MAIN, CHASSIS	SAE J844 NYLON TUBING	0	0
S	8120011	BATTERY BOX	BATTERY BOX, 2 BATTERY CAPACITY	0	0
S	812S500	BATTERY ISOLATION PAD	BATTERY INSULATION PAD, WOOD	0	0
S	8920002	BACKUP ALARM	BACKUP ALARM	0	0
O	32M5000	HYDRAULIC SYSTEM OIL	TRANSYND ATF	0	0

CAB EXTERIOR

O	4510006	STEP-CAB ACCESS, CAB MOUNTED	LH ONLY DOT CAB ENTRANCE STEPS	8	0
O	5020005	CAB DOORS	LH DOT DOOR W/ALUMINUM SLIDING REAR DOOR	0	0
O	5185000	CAB SLIDING DOOR	ALUMINUM REAR SLIDING DOOR	0	0
O	5080001	CAB GUARD REAR	TRAILER STOPS	0	0
O	5100002	GLASS	WINDSHIELD - LAMINATED, ALL GLASS TINTED	0	0
O	51A0003	REAR DOOR GLASS	LAMINATED REAR CAB GLASS	0	0
S	51B0001	REAR WINDOW	RIGHT SIDE REAR WINDOW, TEMPERED GLASS	0	0
O	6220011	MIRRORS-DUAL WEST COAST	STAINLESS STEEL, BOTH HEATED, RH MOTORIZED	3	0
S	6190003	MIRROR ARMS	STANDARD RETRACTABLE ARMS	0	0
O	6230001	MIRRORS-AUXILIARY	HEATED CONVEX MIRRORS	0	0
O	626001	REFLECTORS - SIDE	AMBER REFLECTORS	0	0
S	631001	HORN-ELECTRIC	SINGLE	0	0
S	6615005	CAB TILT MECHANISM-C.O.E.	HYDRAULIC TILT W/ ELECTRIC ASSIST, REMOTE SWITCH AND YELLOW SAFETY BAR	0	0
S	6620002	CAB LATCH/HOLDDOWN-C.O.E.	4 POINT CAB MOUNTING, REAR AIR BAG W/HYDRAULIC LATCH	0	0
S	6720007	GRILLE	ACTT STANDARD GRILLE	0	0
S	51C5002	CURB SIDE WINDOW	FORWARD SLIDING WINDOW	0	0

CAB INTERIOR

S	380003	STEERING WHEEL	18 INCH DIAMETER	0	0
S	381001	STEERING COLUMN	HYDRO POSITION	0	0

Prepared By Alton Hayes
 Quote Id : Stock DOT-3.5.19
 Order : 50004710
 Lead Unit Sales Order : 50004710
 Model : 2020 - ACTT42 Class 8

Prepared For Alton Hayes
 Lone Star Truck Group

S	5200011	SEAT-DRIVER	SEATS INC MID BACK AIR RIDE W/O ISOLATOR , HERITAGE SILVER	0	0
O	5220003	SEAT BELTS-DRIVER	THREE POINT RETRACTABLE, BRIGHT ORANGE COLOR W/ EXTENDED LENGTH	0	0
S	526014	SEAT INSERT	BLACK CORDURA	0	0
S	538001	CARPET & MAT	MAT WITH FOAM BACK	0	0
S	5400002	CAB PANELS-INTERIOR TRIM	ACTT STANDARD INTERIOR TRIM	0	0
O	5420001	SUN VISOR-INTERIOR	SINGLE SEE THROUGH VISOR	0	0
O	5980005	CAMERA DISPLAY MONITOR	REINF W/ PWR AND GND FOR CUSTOMER SUPPLIED MONITOR	1	0
S	8640002	LAMPS-CAB INTERIOR	LED DOME LIGHT W/DASH SWITCH	0	0

CAB CLIMATE CONTROL

O	0605001	CAB TEMPERATURE SYSTEM	INTEGRAL HVAC WDEFROST	0	0
---	---------	---------------------------	------------------------	---	---

GAUGES & INSTRUMENTATION

S	0570003	INSTRUMENTS SALES PKG	ACTT GAUGE PKG #1	0	0
S	137003	GAUGE-HOURMETER	ELECTRIC, DASH MOUNTED	0	0
S	1380001	GAUGE-ENGINE OIL PRESSURE	ELECTRONIC ENGINE OIL PRESSURE	0	0
S	1400001	GAUGE-ENGINE COOLANT TEMPERATURE	ELECTRONIC ENGINE COOLANT TEMP.	0	0
O	2250003	AIR INTAKE RESTRICTION INDICATOR	GRADUATED, MTD UNDER HOOD ,W/ DASH WARNING LAMP	0	0
S	288009	MONITORING - TRANSMISSION OIL TEMP	TRANS TEMP WARNING LIGHT & BUZZER	0	0
S	4930003	FIFTH WHEEL CONTROL	CAB CONTROL, CABLE	0	0
S	5770001	SPEEDOMETER/ODOMETE R	ELECTRONIC WITH ODOMETER	0	0
S	493T500	FIFTH WHEEL CONTROL W/ DUST SEAL	FIFTH WHEEL CONTROL W/ SEAL	0	0

LIGHTING

S	8360002	LAMPS-HEAD	RECTANGULAR SEALED BEAM	0	0
S	837011	LAMPS-STOP-TAIL	DUAL LED TRUCKLITE MODEL 44	0	0
S	8380005	LAMPS-BACKUP	SINGLE OVAL BACK-UP LAMPS	0	0
O	8410002	LAMPS-TURN SIGNAL - FRONT	LED FRONT TURN SIGNALS	0	0

Prepared By Alton Hayes
 Quote Id : Stock DOT-3.5.19
 Order : 50004710
 Lead Unit Sales Order : 50004710
 Model : 2020 - ACTT42 Class 8

Prepared For Alton Hayes
 Lone Star Truck Group

S	844016	SWITCH-TURN SIGNAL & FLASHER	NON-CANCELLING W/TRANSISTORIZED FLASHER	0	0
O	8510008	LAMPS-MARKER	GROTE AMBER LED MARKER LIGHTS	0	0
S	860004	LAMPS-BACK OF CAB	SPOTTING LIGHT RECESSED BOC	0	0
O	8660002	LAMPS-SPOT	LH & RH REAR FACING LAMPS ON CAB ROOF	0	0
O	86A0001	ADDITIONAL SPOT LAMPS	LH & RH REAR FACING LAMPS BELOW CAB DECK	0	0
O	8670006	LAMPS-EMERGENCY WARNING	STROBE - DIRECT WIRED	0	0
S	8700001	CIRCUIT PROTECTION DEVICE	AUTO CIRCUIT BREAKERS	0	0

RADIO/MISC

S	509002	KEY & LOCK SETS- IGN/DOORS	DOOR & IGNITION SAME - SAME FOR FLEET	0	0
O	5900005	RADIO	RADIO PREP IN OVERHEAD CONSOLE	1	0
O	6280005	WINDSHIELD WIPER	XXXX SINGLE PANTOGRAPH INTERMITTENT W/ WASHER	0	0
O	629003	WINDSHIELD WASHER	STANDARD	0	0
O	79C0001	ADDITIONAL POWER AND GROUND - CAB	PWR & GND BINDING POSTS - OVERHEAD CONSOLE	0	0
S	873002	WIRING-CAB	STD CAB WIRING	0	0

FRONT TIRES / WHEELS

S	9210001	HUB CAPS - FRONT AXLE	CR ZYTEL HUBCAP	0	0
S	9400001	WHEEL OIL SEALS-FRONT	SCOTSEAL PLUS XL	0	0
S	904011	HUBS-FRONT	STEEL HUB PILOTED,285MM BOLT CIRCLE	0	0
S	9050014	WHEELS-DISC FRONT	22.5x8.25 STEEL HP, 6.18" INSET, 5HH	0	0
S	905T98	SPARE WHEELS FRONT (IF ORDERED AFTER 5-26-2017 DISTRIBUTOR RESPONSIBLE FOR SHIPPING BY LTL)	NO SPARE FRONT WHEELS	0	0
S	905V500	FRONT TIRE VALVE STEMS/CAPS	STANDARD STEM/CAP	0	0
O	930100	TIRE SIZE & LOAD RANGE - FRONT	295/75R22.5G	0	0
S	9310060	TIRE MANUFACTURER & TREAD - FRONT	DOUBLE COIN RR680	0	0

Prepared By Alton Hayes
 Quote Id : Stock DOT-3.5.19
 Order : 50004710
 Lead Unit Sales Order : 50004710
 Model : 2020 - ACTT42 Class 8

Prepared For Alton Hayes
 Lone Star Truck Group

S	931T98	SPARE FRONT TIRE (IF ORDERED AFTER 5-26-2017 DISTRIBUTOR RESPONSIBLE FOR SHIPPING BY LTL)	NO SPARE FRONT TIRES	0	0
---	--------	---	----------------------	---	---

REAR TIRES / WHEELS

S	9130001	HUBS-REAR	IRON HUB, HP 10 STUD	0	0
S	9140014	WHEELS-DISC REAR	22.5X8.25 STEEL, HP, 5HH	0	0
S	914T98	SPARE WHEELS REAR (IF ORDERED AFTER 5-26-2017 DISTRIBUTOR RESPONSIBLE FOR SHIPPING BY LTL)	NO SPARE REAR WHEELS	0	0
S	914V500	REAR TIRE VALVE	STANDARD STEM/CAP STEMS/CAPS	0	0
O	933100	TIRE SIZE & LOAD RANGE	295/75R22.5G - REAR	0	0
O	9340050	TIRE MANUFACTURER & TREAD - REAR	DOUBLE COIN RT606+	0	-460
S	934T98	SPARE REAR TIRE (IF ORDERED AFTER 5-26-2017 DISTRIBUTOR RESPONSIBLE FOR SHIPPING BY LTL)	NO SPARE REAR TIRES	0	0
S	9410001	WHEEL OIL SEALS-REAR	SCOTSEAL PLUS XL	0	0

PAINT

S	950001	CAB PAINT SCHEME	SINGLE COLOR PAINT	0	0
S	9520001	PAINT SCHEME- ADDITIONAL	SAFETY YELLOW PAINT - STEPS, DECKING AND GRAB HANDLES	0	0
S	9550001	CAB PAINT TYPE	STANDARD WHITE	0	0
S	9801001	CAB COLOR-FIRST	APPROVED--DPSS-N0007-- STANDARD WHITE N0007	0	0
S	9861U1	CHASSIS COLOR	BLACK P3036	0	0
S	987949	BUMPER COLOR	SAME AS CHASSIS,UNPAINTED ALUM OR CHROME	0	0
S	9885002	DISC WHEEL OR RIM COLOR	POWDER COAT WHITE	0	0

ADDITIONAL OPTIONS

S	8990008	CHASSIS WARRANTY	STANDARD ACTT WARRANTY	0	0
S	899A500	TRANSMISSION WARRANTY	ALLISON 3YR WARRANTY	0	0
S	899B001	ENGINE WARRANTY	CUMMINS STANDARD WARRANTY	0	0

Prepared By Alton Hayes
 Quote Id : Stock DOT-3.5.19
 Order : 50004710
 Lead Unit Sales Order : 50004710
 Model : 2020 - ACTT42 Class 8

Prepared For Alton Hayes
 Lone Star Truck Group

S	969V002	ADDITIONAL PRICE ADJUSTMENT	TEMPORARY INFLATION ADJUSTMENT	0	0
---	---------	--	-----------------------------------	---	---

OTHERS

O	2365000	MUFFLER SUPPORT	FRAME MOUNTED - OUTBOARD VERTICAL	0	0
O	4520002	REAR DECK	BOC DECKING W/ ADDTL FUEL TANK COVER	0	0
S	488460	FIFTH WHEEL HEIGHT	FIFTH WHEEL NOMINAL HEIGHT 46"	0	0
O	6270001	REFLECTORS-REAR	CONSPICUITY TAPE	0	0
S	6605003	CAB MOUNTS	NEOPRENE CAB PIVOT BUSHINGS	0	0
S	720002	BRAKE VALVE & PEDAL	FLOOR MOUNTED PEDAL - STANDARD	0	0
S	740003	CERTIFICATION COMPLIANCE	US SALE-US COMMERCE- UNDER 34 MPH	0	0
O	7935007	TRAILER AIR HOSES	15' RUBBER HOSES W/ GLADHANDS EXTENSIONS, SPRING HANGER SUPPORT AND BREAKAWAY CONNECTIONS	0	0
O	7950002	TRAILER HOSE HANGERS & SUPPORTS	GLAD HAND RECEPTACLE BUCKETS	0	0
S	822001	STARTING SWITCH	STANDARD	0	0
S	8900001	TRAILER CABLE RECEPTACLE	TRAILER CABLE RECEPTACLE	0	0
O	8915000	TRAILER CABLE- ELECTRIC	7 WIRE-12FT STRAIGHT DETACHABLE	0	0
O	9725001	CERTIFICATION- EMISSIONS	COMPLIES WITH 2017 U.S. EMISSIONS	0	0
O	974004	CERTIFICATION- EXTERIOR NOISE	COMPLIES W/U.S. & CANADA 80D\B\A AT 50FT	0	0

SUB TOTALS

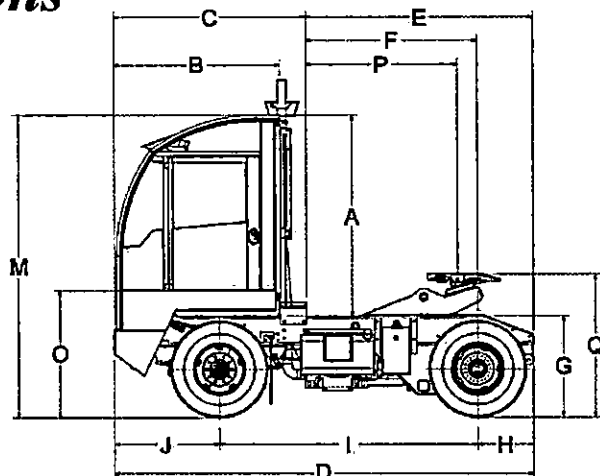
BASE WEIGHT	9,815	4,010
FACTORY OPTION WEIGHT	26	-450
DISTRIBUTOR OPTION WEIGHT	0	0

TOTALS

TOTAL WEIGHT (LB)	9,841	3,560	13,401
-------------------	-------	-------	--------

04/15/2019

Dimensions



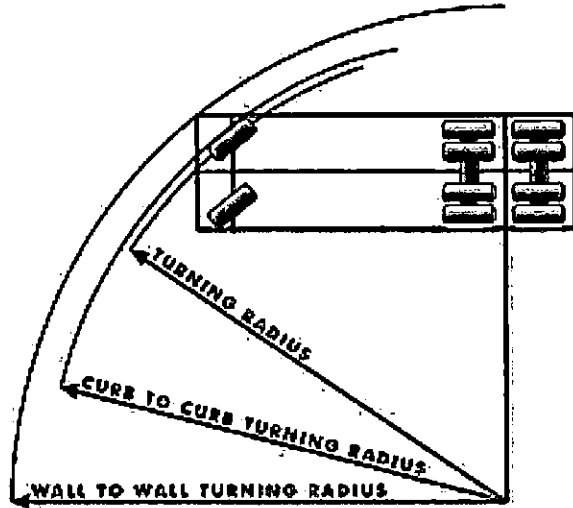
	Dimension(ft)	Description
A	89.50	CAB HEIGHT
B	76.50	BUMPER TO BACK OF CAB
C	0.00	EFFECTIVE BUMPER TO BACK OF CAB
D	198.00	OVERALL LENGTH
E	0.00	EFFECTIVE CAB TO END OF FRAME
F	0.00	EFFECTIVE CAB TO REAR AXLE
G	44.20	UNLADEN FRAME HEIGHT
H	27.00	OVERHANG
I	122.00	WHEELBASE
J	49.00	BUMPER TO FRONT AXLE
M	133.70	OVERALL HEIGHT
O	55.20	FLOOR HEIGHT
P	68.00	EFFECTIVE BACK OF CAB TO KING PIN
Q	60.20	GROUND TO TOP OF 5TH WHEEL (RAISED)
Q	46.70	GROUND TO TOP OF 5TH WHEEL (LOWERED)

SPECIFICATION SUMMARY

Model	ACTT42 Class 8
Engine	B 6.7 '17, 200 HP @ 2600RPM / 520 FT-LB, CUMMINS
Transmission	ALLISON 3000 SERIES, 5-SPEED
Rear Axle	MERITOR RS24-160, SINGLE REDUCTION AXLE
Rear Axle Ratio	7.17
Rear Tire	295/75R22.5G

04/15/2019

Turning Radius



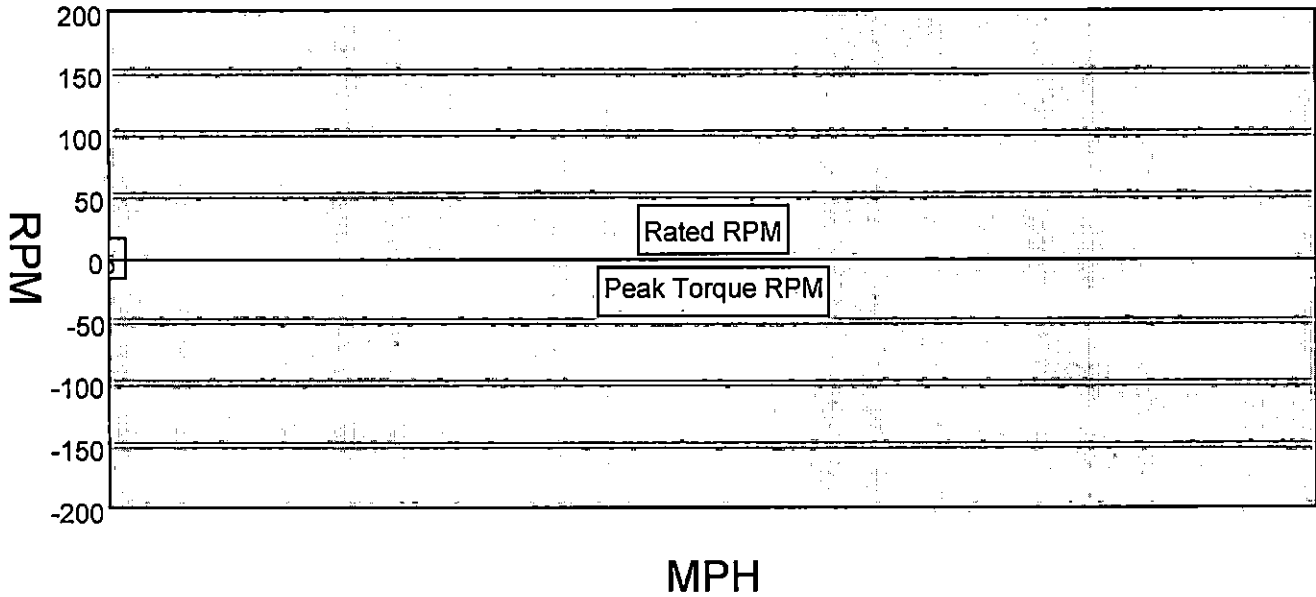
	Dimension(ft)	Description
A	21.41	TURNING RADIUS
B	44.77	CURB TO CURB TURNING DIAMETER
C	47.61	WALL TO WALL TURNING DIAMETER

SPECIFICATION SUMMARY

Model	
Engine	B 6.7 '17, 200 HP @ 2600RPM / 520 FT-LB, CUMMINS
Transmission	ALLISON 3000 SERIES, 5-SPEED
Rear Axle	MERITOR RS24-160, SINGLE REDUCTION AXLE
Rear Axle Ratio	7.17
Rear Tire	295/75R22.5G

04/15/2019

Shift Chart



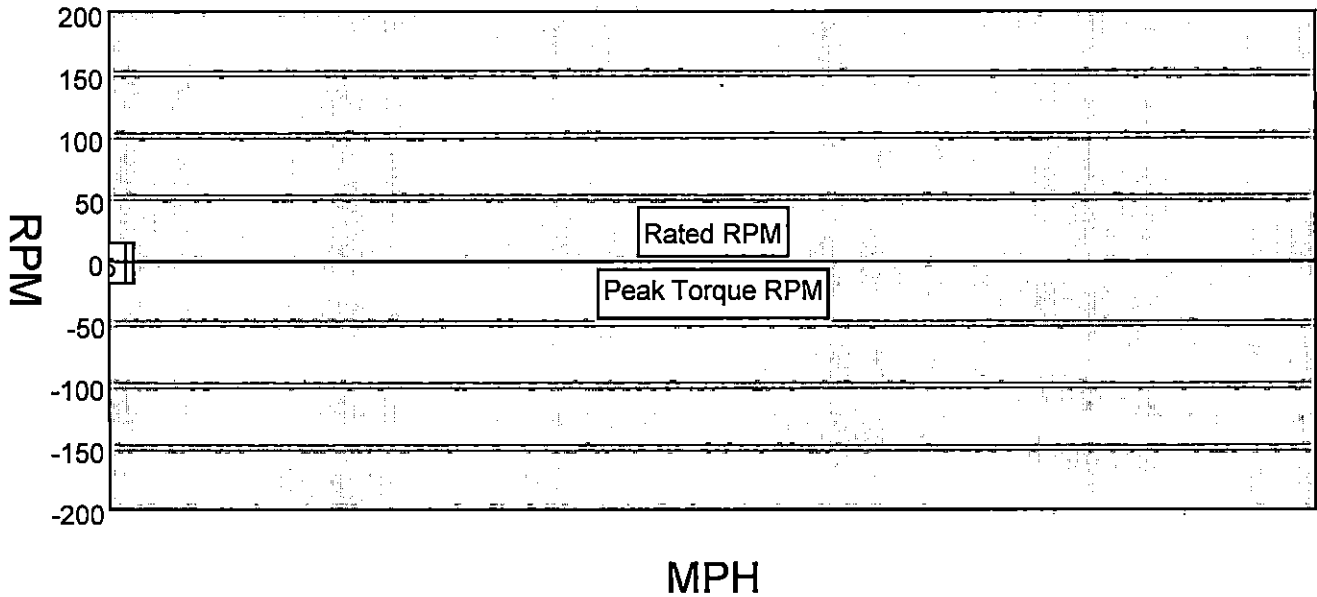
Gear	Trans. Ration	Rear Axle Ration	Overall Reduction	% Split	MPH	RPM After Shift
1C	6.91	7.17	49.5	0.0	0.0	0
1	3.49	7.17	25.0	98.0	0.0	0
2	1.86	7.17	13.3	87.6	0.0	0
3	1.41	7.17	10.1	31.9	0.0	0
4	1.00	7.17	7.2	41.0	0.0	0
5	0.75	7.17	5.4	33.3	0.0	0

SPECIFICATION SUMMARY

Model	ACTT42 Class 8
Engine	B 6.7 '17, 200 HP @ 2600RPM / 520 FT-LB, CUMMINS
Rated Power	0 HP @ 0 RPM
Peak Torque	0 LB-FT @ 0
Transmission	ALLISON 3000 SERIES, 5-SPEED
Rear Axle	MERITOR RS24-160, SINGLE REDUCTION AXLE
Rear Axle Ratio	7.17
Rear Tire	295/75R22.5G
Tire Revolution	496

04/15/2019

Operating Range



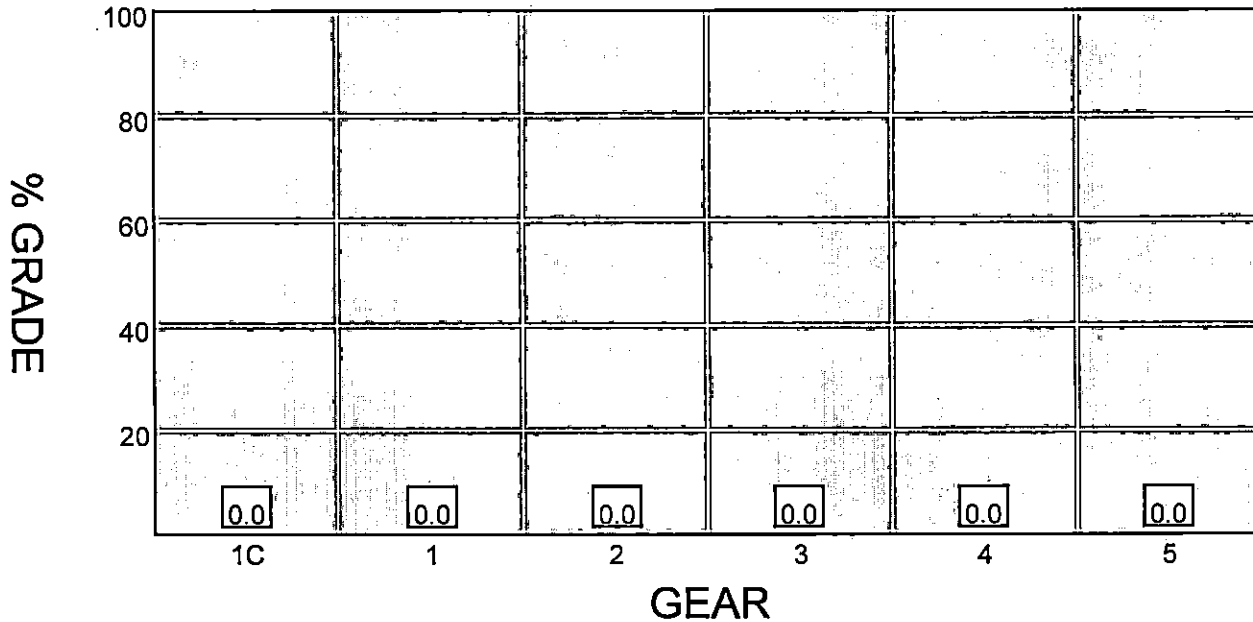
Gear	Trans. Ratio	Rear Axle Ratio	Minimum MPH	Maximum MPH
1C	6.91	7.17	0.0	0.0
1	3.49	7.17	0.0	0.0
2	1.86	7.17	0.0	0.0
3	1.41	7.17	0.0	0.0
4	1.00	7.17	0.0	0.0
5	0.75	7.17	0.0	0.0

SPECIFICATION SUMMARY

Model	ACTT42 Class 8
Engine	B 6.7 '17, 200 HP @ 2600RPM / 520 FT-LB, CUMMINS
Rated Power	0 HP @ 0 RPM
Peak Torque	0 LB-FT @ 0
Transmission	ALLISON 3000 SERIES, 5-SPEED
Rear Axle	MERITOR RS24-160, SINGLE REDUCTION AXLE
Rear Axle Ratio	7.17
Rear Tire	295/75R22.5G
Tire Revolution	496

04/15/2019

Gradeability



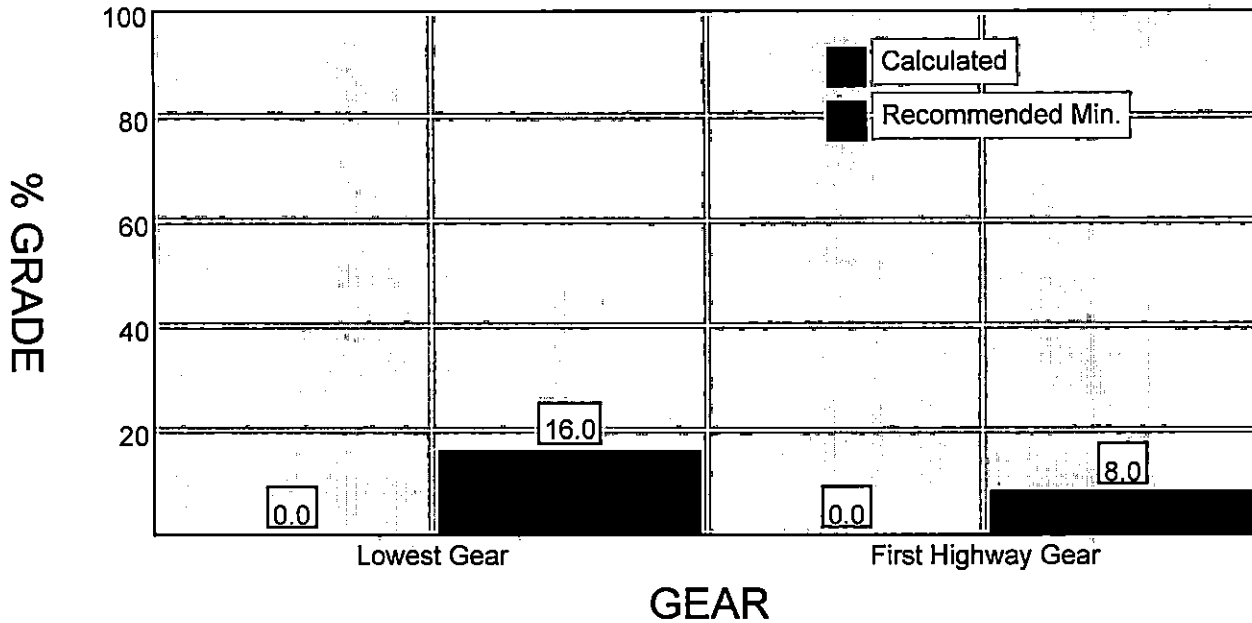
Gear	Trans. Ratio	Rear Axle Ratio	Overall Reduction	Peak Torque	Wheel HP	MPH	Maximum Grade%
1C	6.91	7.17	49.5	0.0	0.0	0.0	0.0
1	3.49	7.17	25.0	0.0	0.0	0.0	0.0
2	1.86	7.17	13.3	0.0	0.0	0.0	0.0
3	1.41	7.17	10.1	0.0	0.0	0.0	0.0
4	1.00	7.17	7.2	0.0	0.0	0.0	0.0
5	0.75	7.17	5.4	0.0	0.0	0.0	0.0

SPECIFICATION SUMMARY

Model	ACTT42 Class 8
Engine	B 6.7 '17, 200 HP @ 2600RPM / 520 FT-LB, CUMMINS
Peak Torque	0 LB-FT @ 0
Transmission	ALLISON 3000 SERIES, 5-SPEED
Rear Axle	MERITOR RS24-160, SINGLE REDUCTION AXLE
Rear Axle Ratio	7.17
Rear Tire	295/75R22.5G
Tire Revolution	496
GVW/GCV	0
Surface	Concrete

04/15/2019

Startability



Gear	Application	Recommended Minimum Grade %	Calculated Grade %
Lowest Gear	City	12.0	n/a
	On Highway	16.0	n/a
	On-Off Highway	18.0	n/a
	Off Highway	20.0	n/a
			0.0
First Highway Gear	All Applications	8.0	n/a

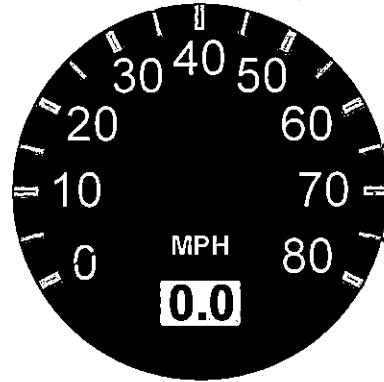
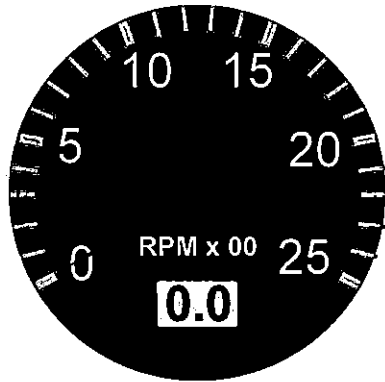
"SPECIFICATION SUMMARY"

Model	ACTT42 Class 8
Engine	B 6.7 '17, 200 HP @ 2600RPM / 520 FT-LB, CUMMINS
Clutch Torque	0 LB-FT 0 RPM
Transmission	ALLISON 3000 SERIES, 5-SPEED
Rear Axle	MERITOR RS24-160, SINGLE REDUCTION AXLE
Rear Axle Ratio	7.17
Rear Tire	295/75R22.5G
Tire Radius	19.5
GVW/GCV	0
Surface	Concrete
Terrain	On Highway

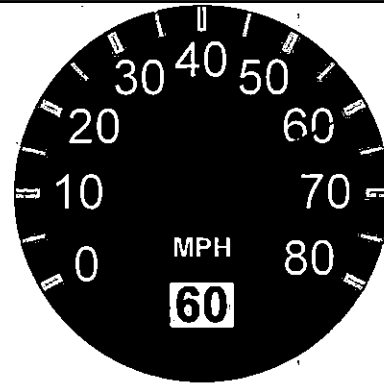
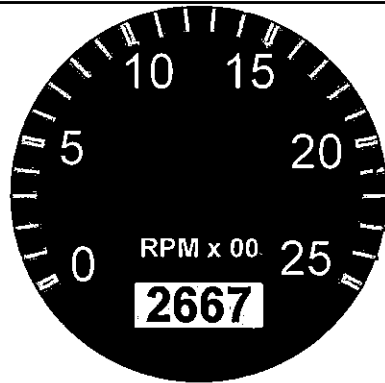
04/15/2019

Top Speed

Speed At Maximum RPM



RPM At 60MPH



	MPH	RPM
Top Speed	0.0	0
Cruise Speed	60.0	2,667
Minimum Of Engine Range	0.0	0
Maximum Of Engine Range	0.0	0
Minimum Of Economy Range	0.0	0
Maximum Of Economy Range	0.0	0

Prepared By Alton Hayes
Quote Id : Stock DOT-3.5.19
Order : 50004710
Lead Unit Sales Order : 50004710
Model : 2020 - ACTT42 Class 8

Prepared For Alton Hayes
Lone Star Truck Group

SPECIFICATION SUMMARY

Model	ACTT42 Class 8
Engine	B 6.7 '17, 200 HP @ 2600RPM / 520 FT-LB, CUMMINS
Transmission	ALLISON 3000 SERIES, 5-SPEED
Rear Axle	MERITOR RS24-160, SINGLE REDUCTION AXLE
Rear Axle Ratio	7.17
Rear Tire	295/75R22.5G
Tire Revolution	496

Attachment IV. Lonestar Group Bid Exception Summary		
Bid Item No	Bid Requirementment	Omission/Exception
a.ii.	GCVWR Minimum 125,001	81,000
b.i.	Cummins QSBT4-Final 6.7L 225 Horsepower, 2500 rpm turbocharged and charge air cooled□	200 Horsepower
b.ii	3-way shut down low oil PSI, High Coolant temp, low coolant level□	No Response
c.iii	Battery Disconnect	No
c.vi.	Shall have a backup camera	No
d.iii.	Coolant Recovery Bottle	Unknown-Surge Tank
e.i	Allison RDS-3500	Allison RDS-3000
e.iii.	Road speed governed 25 MPH	33 MPH
g.ii.	Shall have a duraride suspension	Solid Mount
k.viii.	Power Socket, Dash Mounted	Unknown
m.IV.	Five top of cab clearance lights-Led	Strobe
r.ii.	Standard valve stems, TR-572	Unknown
s.iii.	Shall have a 50 degree taper curb side deck	Unknown
v.i.	Voltmeter	No Response
x.i.	(1) Auto Drain Valve (non Heated)	No Response
z.i.	Three drain pull cord	No Response

Henderson County
Solid Waste



Formal Bid for (2) Spotter Trucks

Due Date: Monday, July 13, 2020

Time: 3:00PM EST

Location: Henderson County Finance Department

Address: 113 N. Main Street
Hendersonville, NC 28792

NOTICE AND INSTRUCTIONS TO BIDDERS

County of Henderson
Doug Guffey-Purchasing Agent
Phone: 828.694.5023
Historic Court House Annex
113 N. Main Street
Hendersonville, NC 28792

Henderson County will receive sealed bids for the furnishing of (2) spotter trucks as specified until 3:00PM EST on Monday, July 13, 2020 at the Henderson County Finance Department, 113 North Main Street, Hendersonville, NC 28792 where the bids will be publicly opened and read aloud. Bids must be sealed and visibly labeled as "Formal Bid: Solid Waste Spotter Trucks".

Equipment must meet all specifications and be the kind and type specified, or an approved equivalent and will be awarded based upon the lowest responsive responsible bidder standard. A manufacturer's build sheet of the proposed equipment shall be included in addition to the completed specifications. The total bid price must include delivery to Henderson County Solid Waste, 191 Transfer Station Dr., Hendersonville, NC 28791. Quoted price(s) should not include any sales or usage taxes but should reflect the actual bid price of the equipment.

The County will entertain bids for current model year. You must submit a separate proposal page for each type of offering with model year and style clearly defined.

If an error or omission occurs bidder(s) must submit in writing no more than seventy-two hours after the bid opening, a request to withdrawal their bid, excluding Saturdays, Sundays, or Holidays for which Henderson County offices are closed.

All motorized equipment requires 2 sets of keys and all pertinent paperwork upon delivery. This shall include invoice, certificate of origin, and odometer disclosure statement. No dealer advertisement insignia is allowed on County vehicles. Only identification is OEM plates as shipped.

The County of Henderson reserves the right to reject any and/or all bids received, or to select the bid which, in our opinion, is in the best overall interest of the County.

Complete specifications shall be included on all equipment. The bidder must meet all of the above requirements for bid to be considered.

Doug Guffey, Purchasing Agent

PROPOSAL

The undersigned, as bidder, hereby declares that this proposal is made without connection with any other person, company, or parties making a similar bid or proposal, and that the proposal is in all respects fair and in good faith, without collusion or fraud.

The bidder has carefully examined the annexed form of specifications and instructions to bidders and hereby declares that he will furnish the equipment called for in the manner prescribed in the specifications and instructions to bidders for the following price:

TYPE	DELIVERY TIME	UNIT PRICE
CAPACITY T59000	120-150 Days	\$115,500 each

PLEASE NOTE BID PRICES AND SPECIFICATIONS SHALL BE FULLY ENFORCEABLE FOR 90 DAYS AFTER THE BID DUE DATE UNLESS NOTED BELOW

Basic = 2 year / 6000 hour
 Frame = 7 year / 25000 hour
 Warranty period:

J. MICHAEL TURNMYRE
 Printed Name of Firm Representative

VESCO Ind. Trucks
 Name of Firm Submitting Proposal

J. Michael Turnmyre
 Signature of Firm Authorized Representative

525 17th St NW Hickory NC 28601
 Firm Address

VP
 Title

800-951-3131
 Telephone Number

mturnmyre@vescoforklifts.com
 Email Address

Henderson County, North Carolina
Solid Waste
Specifications for (2) Spotter Trucks

It is the intent of these specifications to set up minimum requirements for (2) spotter trucks as specified. These specifications must be considered as minimum requirements. If it is necessary to bid alternate equipment or to take exceptions to the specifications as set forth, this must be so stated in your bid. Any reference to a model or brand is only to denote quality and does not mean that equal equipment will not be considered.

<u>I. Specifications</u>	<u>Compliance/Exception</u>
a. General	
i. Shall be 4X2	✓
ii. GCVWR Minimum 125,001	✓
b. Engine	
i. Cummins QSBT4-Final 6.7L 225 Horsepower, 2500 rpm turbocharged and charge air cooled	✓
ii. 3-way shut down low oil PSI, High Coolant temp, low coolant level	✓
iii. Air cleaner filter	✓
iv. Air intake engine mounted restriction gauge	✓
v. Fan Clutch w QSBT4F	✓
vi. Bendix ADIP Air Dryer	✓
vii. Fuel Water Separator, Standard, Not Heated	✓
c. Electrical	
i. 12 Volt electrical system	✓
ii. Group 31, 750 CCA Maintenance Free Batteries	✓
iii. Battery Disconnect	✓
iv. Denso Starter	✓
v. Multiplex Wiring	✓
vi. Shall have a backup camera	✓
d. Cooling System	
i. Silicone Coolant Hoses	✓
ii. 8 gallons extended life coolant	✓
iii. Coolant recovery bottle	✓
e. Transmission	
i. Allison RDS-3500	✓
ii. Lever shift transmission selector	✓
iii. Road speed governed 25 mph	✓
f. Steering	
i. Sheppard M-100 Steering	✓
ii. Standard Stationary Steering Column	✓
g. Suspension	

	<u>Compliance/Exception</u>
i. Front leaf spring (std.10L-9R)	✓
ii. Shall have a dura ride suspension	✓
h. Chassis	
i. Frame structure 116" 82" (chassis)	✓
ii. Front Axle Meritor FF-961 12,000 lb. capacity	✓
iii. Rear Axle Meritor MOR-32 12.28:1 Ratio 70,000 lb. terminal rating	✓
iv. Holland Hitch FW35- 70,000 lb. lift capacity, 16" lift height	✓
v. Step-Style Battery Box; Bottom Step Delete	✓
vi. Painted Black	✓
i. Fuel Tank	
i. 50-gallon round fuel tank	✓
j. Fifth Wheel	
i. 5 th Wheel lift height of 16"	✓
ii. 5" diameter lift cylinders	✓
k. Cab	
i. Left Hand Cab Drive	✓
ii. 66" Ergo Cab	✓
iii. Cab Guards	✓
iv. Keyed ignition	✓
v. Backup alarm	✓
vi. AM/FM CD Player with MP3 Input with speakers	✓
vii. Power terminal, Overhead LS	✓
viii. Power Socket, Dash mounted	✓
ix. 4 Point Air Ride Cab	✓
x. Translucent Sun Visor	✓
xi. Windshield washer with electric intermittent windshield wipers	✓
xii. Color: White	✓
xiii. Standard Steps, Grates, and Handrails Paint Safety Yellow	✓
xiv. Standard Platform Painted White	✓
l. HVAC	
i. 45,000 BTU Heater/Defroster	✓
ii. Air conditioning with QSBT4i and QSTB4F	✓
m. Lights	
i. Dome Light	✓
ii. Standard recessed halogen head lights	✓
iii. Recessed rear/stop lights & back-up lights-LED	✓
iv. Five top of cab clearance lights-LED	✓

	<u>Compliance/Exception</u>
v. Amber strobe light	✓
vi. Work light: One rear facing curb side platform mounted LED	✓
vii. Work light: One rear facing driver side roof mount LED	✓
n. Mirrors	
i. 8" Convex standard mirrors	✓
ii. Heated Mirrors & RS Moto	✓
o. Seat	
i. National Cushion Air Drivers Vinyl Mid back seat, Black	✓
ii. Seat Belt-Black Lap	✓
p. Brakes	
i. 16 ½ X 5 Front Brakes	✓
q. Hydraulic Pump	
i. 10 GPM hydraulic pump (standard hydraulic system)	✓
r. Wheel & Tires	
i. Goodyear G399 295/75R22.5 Rib Tire, Quantity of 2 Front (Steer) and Quantity of 4 Rear	✓
ii. Standard valve stems, TR-572	✓
iii. Standard Wheels Painted White	✓
s. Bumpers	
i. Standard Steel Bumper	✓
ii. Shall be removeable	✓
iii. Shall have a 50-degree taper curb side deck	✓
iv. Painted Black	✓
t. Fenders	
i. Flexible rear fenders	✓
ii. Tire flaps behind drive axle	✓
u. Hooks	
i. Front Tow Eye	✓
ii. Rear Tow Eye	✓
v. Gauges	
i. Voltmeter	✓
ii. Oil Pressure	✓
iii. Water Temperature	✓
iv. Fuel Level	✓
v. Air Pressure	✓
vi. Hour Meter	✓
vii. Speedometer	✓

Compliance/Exception

- viii. Odometer
- ix. High Beam Headlight indicator
- x. Turn signal-Hazard Flasher indicator
- xi. Low Fuel Light
- xii. Low Air Light
- xiii. Low Engine Oil Pressure Light & Buzzer

✓
✓
✓
✓
✓
✓

w. Trailer Options

- i. 12' straight trailer air hose
- ii. 15' straight trailer electric cable
- iii. Standard Red and blue glad hands

✓
✓
✓

x. Driveline

- i. (1) Auto Drain valve (Non-Heated)

✓

y. Exhaust

- i. Vertical Exhaust System
- ii. Exhaust Shield

✓
✓

z. Drain Cords

- i. Three drain pull cord

✓

II. Warranty

- a. Minimum 1-year warranty

✓

III. Delivery

- a. Please deliver to Henderson County Solid Waste, 191 Transfer Station Dr., Hendersonville, NC 28791 with 2 sets of keys and an owner's manual.

IV. Terms and Conditions

- a. For Disadvantaged Business Enterprise requirements, see Minority Business Participation Guidelines posted under Doing Business with Henderson County at <https://www.hendersoncountync.gov/county/page/doing-business-henderson-county>
- b. Contractors with 25 or more employees as defined in Article 2 of Chapter 64 of the NC General Statutes must verify compliance with the E-verify, NCGS 160A-20.1(b).
- c. Compliance with Purchase Order Terms & Conditions <https://www.hendersoncountync.gov/county/page/doing-business-henderson-county>



VESCO Toyotalift
525 17th St NW
Hickory, NC 28601-4727
Phone: 828-322-2105
Fax: 828-322-3998
www.vescoforklifts.com

July 13, 2020

Henderson County Engineering
191 Transfer Station Dr.
Hendersonville, NC 28791

We are pleased to submit the attached Capacity Terminal Tractor quotation for your review and approval.

As an authorized Capacity dealer, VESCO Toyotalift can provide the high-quality equipment and service you would expect from the world's Terminal Tractor manufacturer. This quotation reflects our understanding of your needs, combined with a careful configuration of the appropriate equipment and options.

To place your order, please sign and date the quotation where indicated and return to me. If you have any questions, please contact me.

Thank you for your interest in our company and the Capacity product. We look forward to being of valuable service to you for your material handling needs.

Sincerely,

A handwritten signature in cursive script that reads "J. Michael Turnmyre".

J. Michael Turnmyre
Sales
Phone: 828-322-2105
Fax: 828-322-3998

encl

To: Henderson County Engineering
 191 Transfer Station Dr.
 Hendersonville, NC

Date: July 13, 2020

Our Ref: JMT2020HCTJ9k

Attn:

We respectfully submit this quotation for the following NEW 2020 Year Model Capacity Terminal Tractor Model TJ 9000 (2 each):



The TJ 9000 is a single-axle yard jockey truck with an impressive GCWR of up to 242,000-lbs. It can work anywhere: intermodal, warehouse and distribution, or for port trucking, and it handles rough surface conditions with ease.

Option	QTY	Description
PROFILE		
APPL-1000	1	Warehouse and Distribution Application
CONF-0001	1	4x2
ELEC-6000	1	12V Electrical System
GCVW-1002	1	GCVWR 125,001 to 242,000 lbs.
MODL-1006	1	TJ9000
ENGI-5002	1	Cummins QSBT4-Final 6.7L 225 Horsepower, 2300 RPM Turbocharged and Charge Air Cooled
TRAN-1001	1	Allison RDS-3500
STEE-1001	1	Sheppard M-100 Steering
CHWB-1001	1	Frame Structure 116" 82" (chassis)
FRAX-1000	1	Meritor FF-961 12,000 lb. Capacity
RRAX-1003	1	Meritor MOR-32 12.28:1 Ratio 70,000 lb. Terminal Rating
SUSP-1001	1	Dura Ride Suspension – Capacity Exclusive
FTWL-1000	1	Holland Hitch FW35 - 70,000 lb. Lift Capacity, 16" Lift Height

Option	QTY	Description
TIRE-4003	2	Goodyear G399 295/75R22.5 Rib Tire, Front
TIRE-4007	4	Goodyear G399 295/75R22.5 Rib Tire, Rear
PANT-1000	1	Standard Bumper Paint Black
PANT-1003	1	Standard Cab Paint White
PANT-1004	1	Standard Wheels Painted White
PANT-1005	1	Standard Steps, Grates & Handrails Paint "Safety Yellow"
PANT-1006	1	Standard Platform Paint White
PANT-1007	1	Standard Frame Paint Black
ENGINE ACC		
ENAC-1000	1	3 Way Shut-Down Low Oil PSI, High Coolant Temp, Low Coolant Level
ENAC-1003	1	Air Cleaner Filter
ENAC-1004	1	Air Intake Engine Mounted Restriction Gauge
ENAC-1007	1	Bendix ADIP Air Dryer
ENAC-1021	1	Fan Clutch, w/ QSBT4F
ENAC-1022	1	Fuel Water Separator, Standard, Not Heated
ELECTRICAL		
ELEC-2003	2	Group 31, 750 CCA Maintenance Free Batteries
ELEC-3000	1	Battery Disconnect
ELEC-4001	1	Denso Starter
COOLING SYSTEM		
COOL-1000	1	Silicone Coolant Hoses
COOL-1002	1	8 Gallons of Extended Life Coolant
COOL-1003	1	Coolant Recovery Bottle
TRANSMISSION		
TRAN-2000	1	Lever Shift Transmission Selector
TRAN-3000	1	Road Speed Governed - 25 MPH
STEERING		
STEE-1005	1	Standard Stationery Steering Column
CHASSIS OPTIONS		
CSOP-2004	1	Step-Style Battery Box (VESCO TO REMOVE BOTTOM STEP)
FUEL TANK		
FLTK-1010	1	50 Gallon Round Fuel Tank
FIFTH WHEEL OPTIONS		
FWOP-2000	1	5th Wheel Lift Height 16"
FWOP-2001	2	5" Diameter Lift Cylinders
CAB		
CABH-3000	1	66" Ergo Cab
CAB GUARDS		
CGOP-1000	1	Cab Guards
CAB ELECTRIC		

Option	QTY	Description
CBEL-1000	1	Power Socket, Dash mounted
CBEL-1001	1	Power Terminal, Overhead LS
CBEL-1003	1	AM/FM/CD Player, MP3 Input w/Speakers
CBEL-1004	1	Back Up Alarm and Back Up Camera
CBEL-2000	1	Keyed Ignition
CAB OPTIONS		
CBOP-1000	1	4 Point Air Ride Cab
CBOP-1017	1	Translucent Sun Visor
CBOP-1021	1	Windshield Washer w/Electric Intermittent Windshield Wipers
HVAC		
HVAC-1000	1	45,000 BTU Heater/Defroster
HVAC-1006	1	Air Conditioning, W/ QSBT4i and QSBT4F
LIGHT OPTIONS		
LITE-1000	1	Dome Light
LITE-1001	1	Standard Recessed Halogen Head Lights
LITE-1003	1	Recessed Rear/Stop Lights & Back-Up Lights - LED
LITE-1004	1	Five Top of Cab Clearance Lights - LED
LITE-1007	1	Amber Strobe Light
LITE-3006	1	Worklight, One Rear Facing Curb Side Platform Mounted - LED
LITE-3008	1	Worklight, One Rear Facing Driver Side Roof Mount - LED
MIRROR OPTIONS		
MIRR-1002	1	Heated Mirrors & RS Moto
MIRR-1004	1	8" Convex Mirrors
SEAT OPTIONS		
SEAT-1000	1	National Cushion Air Driver's Vinyl Mid-Back Seat, Black
BRAKES		
BRAK-2004	1	16 1/2 x 5 Front Brakes
HYDRAULIC PUMP		
HYPM-1000	1	10 GPM Hydraulic Pump (standard hydraulic system)
WHEEL OPTIONS		
WLOP-4000	1	Standard Valve Stems, TR-572 (0°)
BUMPERS		
BUMP-1006	1	Standard, Steel, Removable Capacity Bumper, 50 Degree Taper Curb Side Deck
FENDERS		
FEND-1000	1	Flexible Rear Fenders
FEND-1003	1	Tire Flaps Behind Drive Axle, w/ Capacity Logo
HOOKS		
HOOK-1006	1	Front Tow Eye
HOOK-1007	1	Rear Tow Eye
INSTRUMENTS		

Option	QTY	Description
INST-1002	1	Fuel Level Gauge
INST-2000	1	Volt Meter, Oil Pressure, Water Temperature, Fuel Level, Air Pressure, Hour Meter, Speedometer, Odometer
INST-2002	1	High Beam Headlight Indicator, Turn Signal-Hazard Flasher Indicator, Low Fuel, Low Air & Low Engine Oil Pressure Light & Buzzer
SEAT BELT OPTIONS		
SEAT-4000	1	Seat Belt- Black Lap
SUSPENSION		
SUSP-1004	1	Front Leaf Spring (Std. 10L-9R)
TRAILER OPTIONS		
TRAI-1002	1	12' Straight Trailer Air Hose
TRAI-2001	1	15' Straight Trailer Electric Cable
TRAI-6000	1	Standard Red & Blue Glad Hands
DRIVELINE		
DRVL-1001	1	(1) Auto Drain Valve (Non-Heated)
EXHAUST		
EXHA-1000	1	Vertical Exhaust System
EXHA-2000	1	Exhaust Shield
CAB DRIVE		
CABD-1001	1	Left Hand Drive Cab
DRAIN CORDS		
DRCD-1004	1	Three Drain Pull Cord

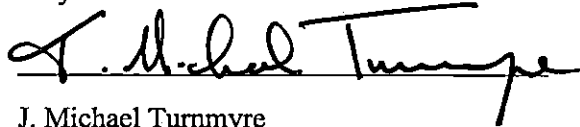
Total Selling Price: \$115,500+ Tax (includes all prep/freight)

Payment Terms: NET 30

Validation: Thirty (30) days from date of quotation

Shipment: 120-150 DAYS FROM THE DATE OF SIGNED ORDER

Sincerely,
 VESCO Toyotalift

By: 
 Name: J. Michael Turnmyre
 Title: Sales Representative

Accepted:
 Henderson County Engineering

By: _____
 Name: _____
 Title: _____
 Date: _____

DURA-RIDE®

PATENTED AIR SPRING SUSPENSION SYSTEM

Experience the comfort of the suspension system that changed an entire industry's thinking on how form follows function.

Designed to minimize stress to the truck frame, cab and drive train, DURA-RIDE® isolates the truck from road shake caused by the rough terrain found in many operations, and yet provides a stable ride.

The Capacity DURA-RIDE® system was engineered and developed to address the rising costs of workman's compensation and health care, the cost of replacing damaged components and the loss of operating time during repair.



DURA-RIDE®



CAPACITY
CUSTOMER FOCUSED • QUALITY DRIVEN

CAPACITY • 401 Capacity Drive • Longview, Texas 75604-5341

www.capacitytexas.com | 1-800-323-0135 Some items shown represent optional equipment.

DURA-RIDE® PATENTED AIR SPRING SUSPENSION SYSTEM

THE CAPACITY DURA-BUILT® DIFFERENCE

Capacity has devoted many hours developing new technology. The result? The best built, highest quality, Terminal Truck on the market.

Innovative ideas like DURA-RIDE® have made Capacity the number one truck for operators of ports, rail yards, warehouse & distribution centers and truck terminals. This, plus an extensive selection of customizable solutions, has helped Capacity create the right Terminal Truck for the every job.

HOW DOES IT WORK?

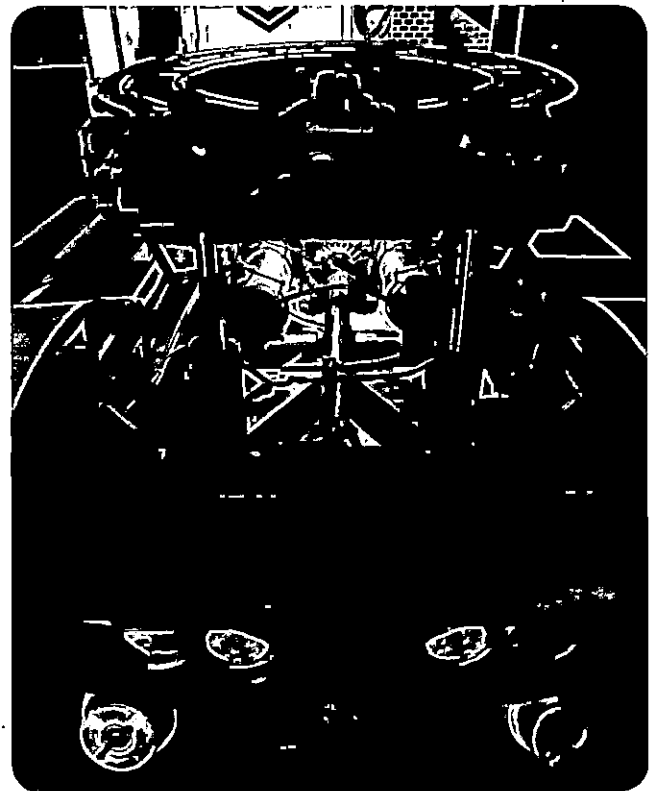
The DURA-RIDE® suspension system is equipped with two air springs which are controlled for ride height by a position sensitive air valve. As more weight is applied to the fifth wheel, the springs collapse. The valve senses the change in position and increases spring air pressure to compensate for additional load and to restore the vehicle to its original ride height. As the load is decreased, air is released from the springs to maintain proper positioning. Spring ride height should be approximately 4-1/2" after air pressure has stabilized. Height changes required for load changes are not instantaneous. Stabilization takes 5-7 seconds under normal conditions. Ride height is factory set and should not require adjustment, unless leveling valve and/or linkage requires replacement.

SERVICE AND MAINTENANCE MADE EASY

The DURA-RIDE® suspension system is furnished with five spherical bearings which allow the suspension to articulate. The bearings are located at each end of the boom lift cylinders and at the swivel point of the A-frame structural member to which the rear axle is attached. The swivel point grease fitting is located just above the bearing in the top plate of the A-frame. A remote lube point is provided for the swivel point bearing.

DURA-PLUS® WARRANTY

Capacity units with the DURA-RIDE® suspension system option will also benefit from our exclusive DURA-PLUS® 10 year frame warranty.



Distributed by: