

**REQUEST FOR BOARD ACTION**  
**HENDERSON COUNTY**  
**BOARD OF COMMISSIONERS**

**MEETING DATE:** January 7, 2019

**SUBJECT:** Restroom Facilities at Etowah Park and Jackson Park

**PRESENTER:** Carleen Dixon, Parks & Recreation

**ATTACHMENTS:** Yes

- 1) Etowah Park: Location and Prefab Building Layout
- 2) Jackson Park: Location and Prefab Building Layout
- 3) Pricing for all options

**SUMMARY OF REQUEST:**

**Etowah Park:**

Since hosting multiple tournaments in Etowah Park we are seeing numbers around 500 visitors per day at these events. Currently, the park has one restroom facility that has 3 water closets and 1 urinal. The capacity of this restroom facility was overloaded at the first tournament hosted and we have been renting portable restrooms ever since to accommodate these tournaments.

**Jackson Park:**

We have 6 fields located in one section of the park and 4 of these fields have close access to restrooms however, fields 6 and 7 do not. The addition of a restroom facility in the proposed location would provide fields 6 and 7 with greater restroom access and safer access for parents who are watching one child play while another needs to get to the facilities. It would expand our overall capacity to host large tournaments and events in the park.

Attached you will see options for additional restrooms at each park.

**BOARD ACTION REQUESTED:**

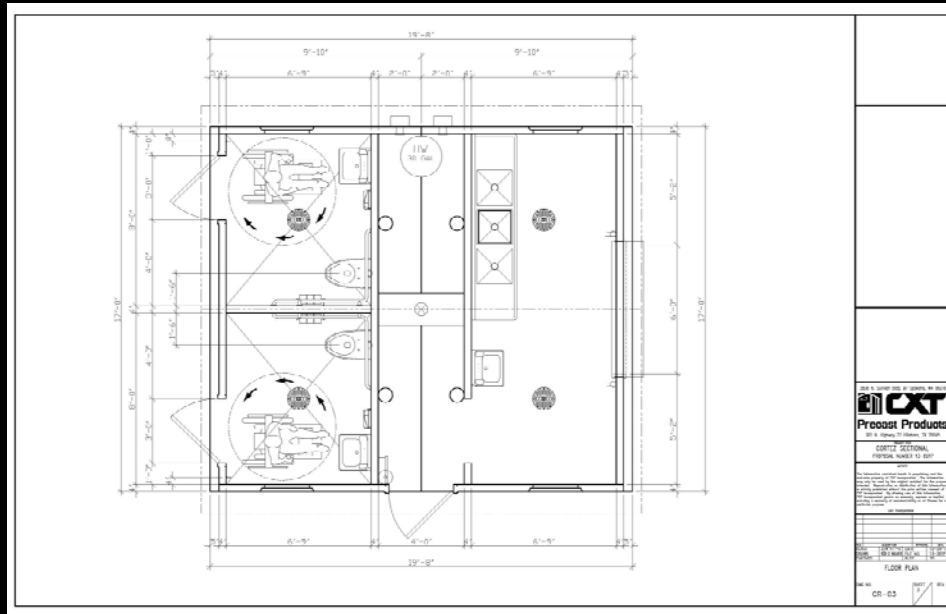
No board action is requested.

**Suggested Motion:**

*No motion is suggested.*



# ETOWAH PARK : PREFABRICATED CONCESSION BUILDING LAYOUT

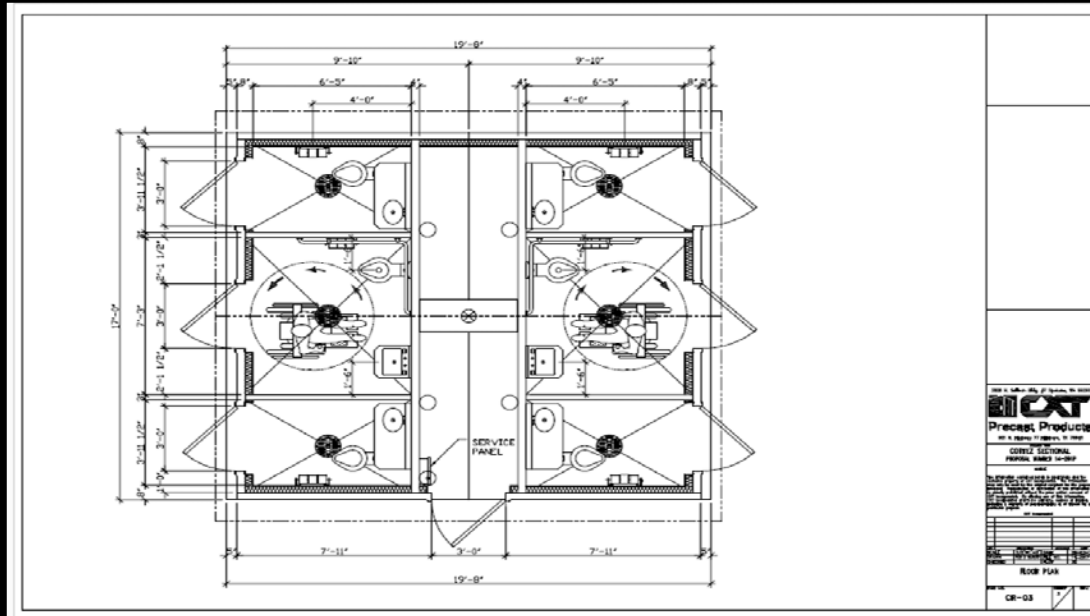


JACKSON  
 PARK  
 RESTROOM

LOCATION  
 IN YELLOW



## JACKSON PARK : PREFABRICATED BUILDING LAYOUT



## Etowah Park Options

			Quoted Price Unit Includes (Freight, off-loading and setting the building and final connection)	Estimated Prep/Utilities/ Sidewalk	Bathroom Heaters	Sewer Upgrade (to handle additional capacity)	Contingency	Estimated Design and Permitting Fees	Total	NOTE	Timeframe to build
1	Cortez - Prefab Bld	Tear Down									
	8-Lavatories, 8 water closets & Concession unit	N/A	250,000	50,000	4,000	40,000	9,000	N/A	353,000	8 Stand Alone Units	90 days
2	Stick Built Option:	Tear Down	Stick built facility including pad, sidewalk, permit, fixtures, etc.	Estimated Prep/Utilities/ Sidewalk	Bathroom Heaters	Sewer Upgrade (to handle additional capacity)	Contingency	Estimated Design and Permitting Fees	Total	NOTE	Timeframe to build
	4 men's water closets, 4 women's water closets and 4 lavatories (2 in each) & Concession	25,000	270,000	Included	Included	40,000	9,000	20,000	364,000	4 Women and 4 men	6 months (design, bid & build)
3	Expand Existing Option:	Tear Down	Add on to back of building	Estimated Prep/Utilities/ Sidewalk	Bathroom Heaters	Sewer Upgrade (to handle additional capacity)	Contingency	Estimated Design and Permitting Fees	Total	NOTE	Timeframe to build
	Currently have 3 water closets and 1 urinal; would add 4 water closets (2 women/2 men) and 2 lavatories	N/A	128,000	Included	Included	40,000	5,000	10,000	183,000	4 Women and 4 men	4 1/2 months (design, bid & build)

## Jackson Park Option (Nothing Changed from 12-3-18 Presentation)

			Quoted Price Unit Includes (Freight, off-loading and setting the building and final connection)	Estimated Prep/Utilities/ Sidewalk	Bathroom Heaters	Sewer Upgrade (to handle additional capacity)	Contingency	Estimated Design and Permitting Fees	Total	NOTE	Timeframe to build
1	Cortez - Prefab Bld	Tear Down									
	6-Lavatories and 6 water closets	N/A	139,582	45,000	3,500	N/A	6,000	N/A	194,082	6 Stand Alone Units	90 days

### 2019 20ft. 6 Station Commercial Restroom Trailer with Winter Package

#### Standard Features:

- Women's – 3 water closets & 2 lavatories; Men's – 1 water closet, 2 Urinals & 1 lavatory
- 600 Gallon Waste (heated), 100 Gallon Fresh Water Tank with Pump
- 1-30" Entrance Doors with Fold Up Step System (not ADA accessible)
- Lead Time 2-4 Months
- MSRP: \$49,990      Shipping: \$1,450      Total: \$51,440
- Pump Out Costs: \$250 each time

