

**REQUEST FOR BOARD ACTION**

**HENDERSON COUNTY  
BOARD OF COMMISSIONERS**

**MEETING DATE:** September 4, 2018  
**SUBJECT:** Medicaid Transformation Update  
**PRESENTER:** Brian Ingraham, CEO Vaya Health  
**ATTACHMENTS:** Yes  
1. Power-point Presentation

**SUMMARY OF REQUEST:**

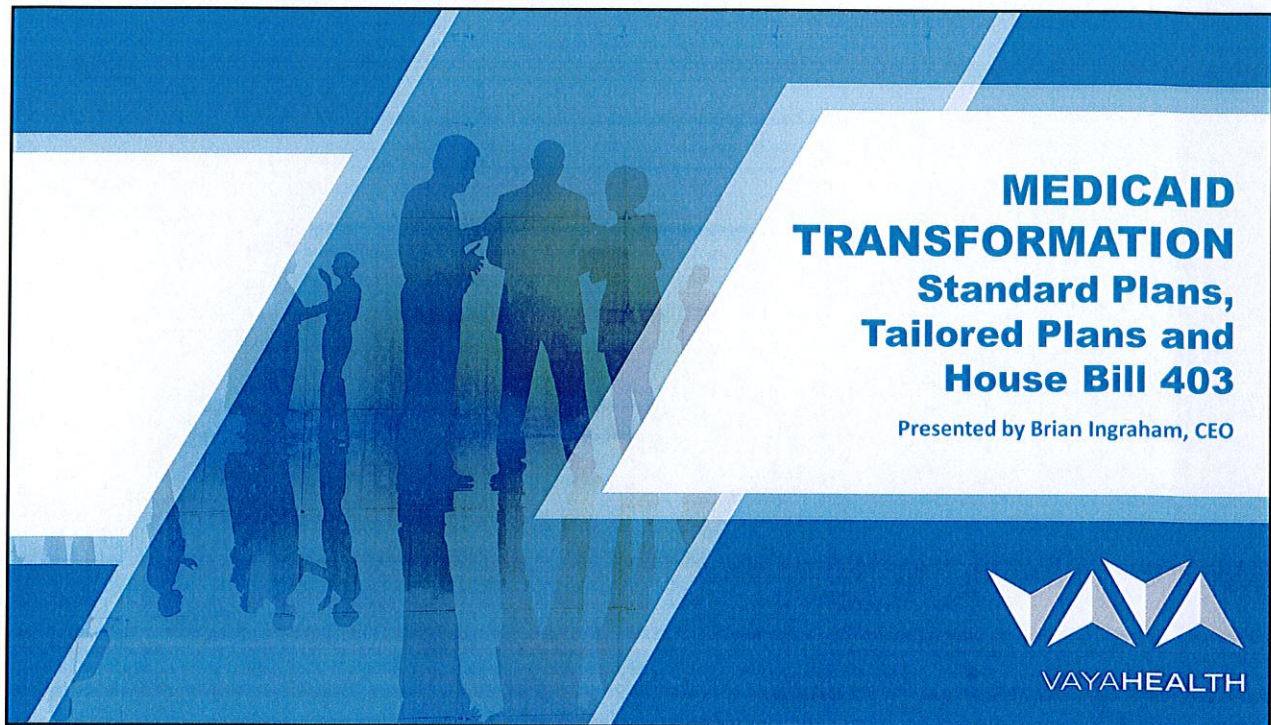
Brian Ingraham, CEO of Vaya Health, will present information on Medicaid Transformation, including the standard and tailored plan designations and options.

**BOARD ACTION REQUESTED:**

No Board action is required. This item is for informational purposes only.

**Suggested Motion(s):**

*No motion suggested.*



## Standard Plans and Tailored Plans: What are they?

**Standard Plans** address the majority of the Medicaid population, both physical health and behavioral health for those individuals with mild to moderate challenges

- Standard Plans can be up to four statewide commercial plans and up to 10 Provider Led Entities (PLEs) serving the 6 regions of the state

**Tailored Plans** are for those individuals who have more complex behavioral health needs, individuals with IDD and other individuals identified in House Bill 403

- Tailored Plans will also manage the physical health needs of the person with behavioral health/IDD
- Current legislation stipulates there will be no fewer than 5 and no more than 7 Tailored Plans

## House Bill 403

- Added Secretary's concept of BH/IDD Tailored Plans that will cover **integrated physical health, pharmacy, BH and IDD** services for complex, high-risk population
- Added **mild to moderate** BH population to scope of Standard Plans – list of services includes inpatient, OPT, crisis and some SUD – overlap with enhanced services
- Established assessment and transition process for members moving between plans
- Excluded CAP-C and CAP-DA from Standard Plans
- Went from three to four statewide PHP contracts
- Directed DHHS to submit a report to JLOC – Medicaid and NCHC with TP implementation plan by 6/22/18

## HB 403 – Tailored Plan Overview

- LME/MCOs can be only entities that operate BH/ IDD TPs for the initial 4-year contract term
- No fewer than five and no more than seven
- Must maintain some components of 1915(b)/(c) Waiver:
  - B3 and HCBS services
  - Care Coordination
  - Closed provider networks
  - Manage rates
  - Local Business Plans
  - CFAC input
- Requires LME/MCOs to partner with Standard Plan PHP
- Covered population shrinks but covered services expand to include physical health and pharmacy

## HB 403 – Tailored Plan Rollout

- TP application process cannot start until 31 Aug 2018
- TPs go live **one year** after implementation of first SP contracts (potentially as early as November 2020)
- LME/MCOs must go through RFA process: “Comprehensive readiness review”
- Constituent counties may change depending on TP regions
- After initial 4-year term, contracts awarded through competitive RFP process open to nonprofits

## HB 403 – TP Covered Population

- Individuals with SED or a diagnosis of “severe” SUD or TBI
- Individuals with a developmental disability as defined by Chapter 122C
- Individuals with mental illness who:
  - Meet TCLI criteria
  - Had 2 or more psychiatric hospitalizations or admissions within prior 18 months
  - Known to have had one or more IVC within prior 18 months
  - Had 2 or more visits to the ED for a psychiatric problem within prior 18 months
- Individuals with any diagnosis who have had 2 or more episodes using BH crisis services within prior 18 months
- Individuals receiving any of the services currently covered by LME/MCOs that are NOT covered by SPs
- Children with Complex Needs
- Children aged 0-3 with or at risk of developmental delay or disability
- Children involved with DJJ/ DDP “who meet criteria established by DHHS”

# Standard Plan RFP

- Must identify subcontractors by name
- Deadline for RFP response: 2 pm 12 Oct 2018
- Contracts awarded to PHPs: February 2019
- Anticipates a two-phase PHP rollout:
  - November 2019: Medicaid managed care program will launch in Phase 1 regions (central).
  - February 2020: Medicaid managed care program will launch in Phase 2 regions (east & west).

## LME/MCO MAP WITH PROPOSED REGIONS

