

10-4-10

PUBLIC INPUT SIGN UP SHEET

**PUBLIC INPUT SHALL BE LIMITED TO
THREE (3) MINUTES PER PERSON.**

EACH PERSON SHOULD:

- (1) STATE YOUR NAME**
- (2) IN WHAT AREA OF THE COUNTY YOU LIVE**
- (3) SPEAK IN A CLEAR AND COURTEOUS MANNER.**

Please Print:

	<u>NAME</u>	<u>ADDRESS</u>	<u>ISSUE</u>
1.	_____	_____	_____
2.	_____	_____	_____
3.	_____	_____	_____
4.	_____	_____	_____
5.	_____	_____	_____
6.	_____	_____	_____
7.	_____	_____	_____
8.	_____	_____	_____
9.	_____	_____	_____
10.	_____	_____	_____
11.	_____	_____	_____
12.	_____	_____	_____
13.	_____	_____	_____



October 2016

Take-away Messages

- We are a local neighbor with a 125 year history of caring for families in Western NC
- ALL of our employees live and work in Western NC
- Our focus is on providing the highest quality care, as close to home as possible
- We want to partner with Pardee – another high quality, low cost, local care provider -- to be proactive, and get ahead of the need for additional, convenient, patient-centered ambulatory care in N. Henderson/S. Buncombe County
- **Bottom line: Additional services, more local jobs, enhanced convenience, highest quality care**

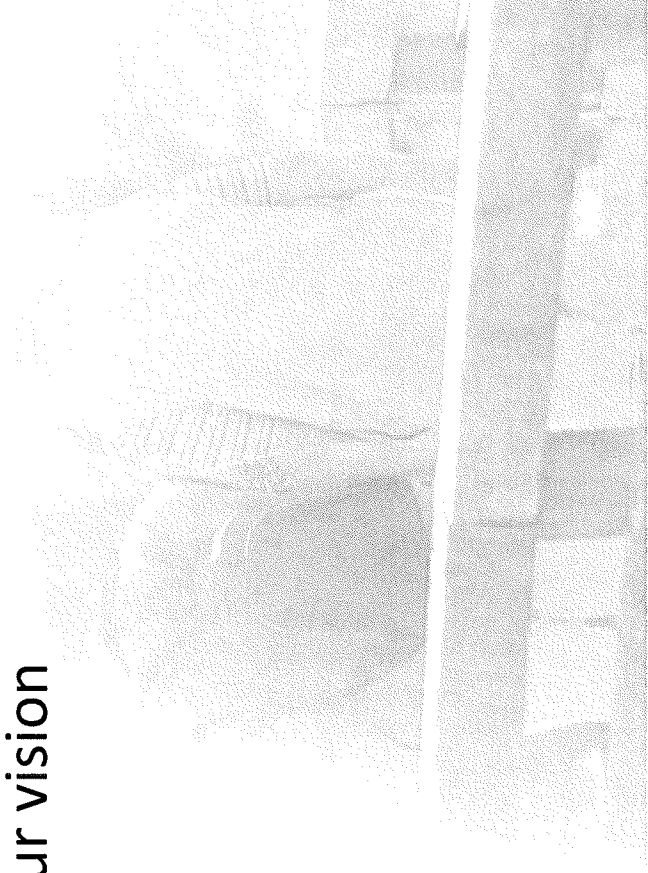
Who is Mission Health System?

- Dedicated professionals working with others to improve the health of our region
 - 125-year old, community-owned, not-for-profit
 - Committed to providing care as close to home as possible and returning referred patients to local providers as soon as safe and effective
- Local healthcare organization
 - Board and management all live and work in Western NC
 - Services are provided exclusively in Western NC
 - Money that is earned here, stays here
- Independent of government entities
 - Governed by a volunteer board of directors
- Grounded in the Judeo-Christian tradition
 - Not affiliated with any denomination



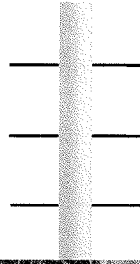
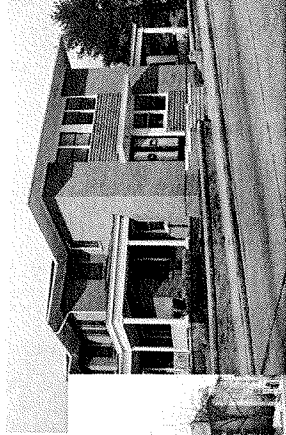
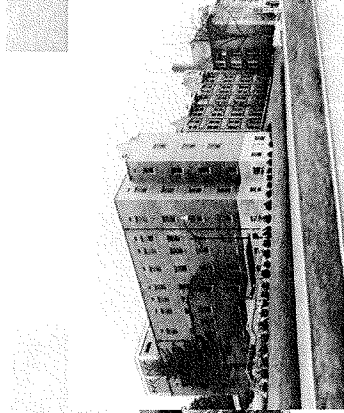
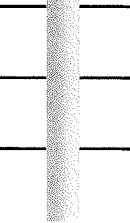
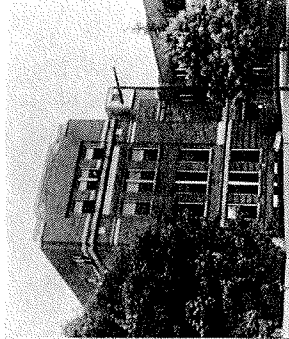
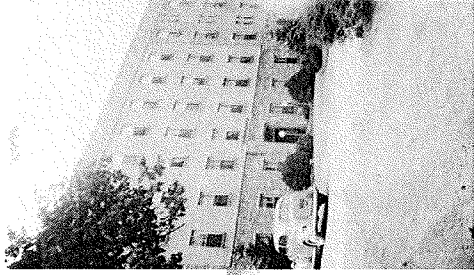
Our Mission

- To promote and improve the health and wellness of the people of Western NC
- To improve access to high quality, cost-effective care
- To provide superior care through education, innovation, integrated services and research
- To work with others who share our vision



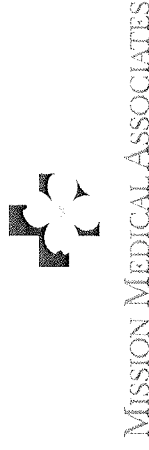
What is Mission's History?

Six Asheville hospitals came together over the span of 50 years:
Asheville Colored, Aston Park, Biltmore, Mission, Norburn
and St. Joseph's



What is Mission's History? (continued)

- Mission Health System Affiliates
 - Blue Ridge Regional Hospital (formerly Spruce Pine)
 - McDowell Hospital
 - Mission Medical Associates
 - Consumer Preferences
 - In all counties beyond Buncombe and Madison, the local hospital is preferred for routine care while Mission is preferred for critical care



Mission's Awards and Recognition—2010



Gold Performance Achievement Award for treatment of heart attack – 2010
American College of Cardiology Foundation



100 Top Hospitals Health Systems Benchmark Study – 2010
Thomson Reuters



Breastfeeding-Friendly Workplace – 2010
NC Breastfeeding Coalition



Blue Distinction Center for Specialty Care for Bariatric Surgery – 2010
Blue Distinction Center for Clinical Excellence in Spine Surgery – 2010
Blue Distinction Center for Clinical Excellence in Hip and Knee Replacement – 2010
Blue Cross and Blue Shield of North Carolina



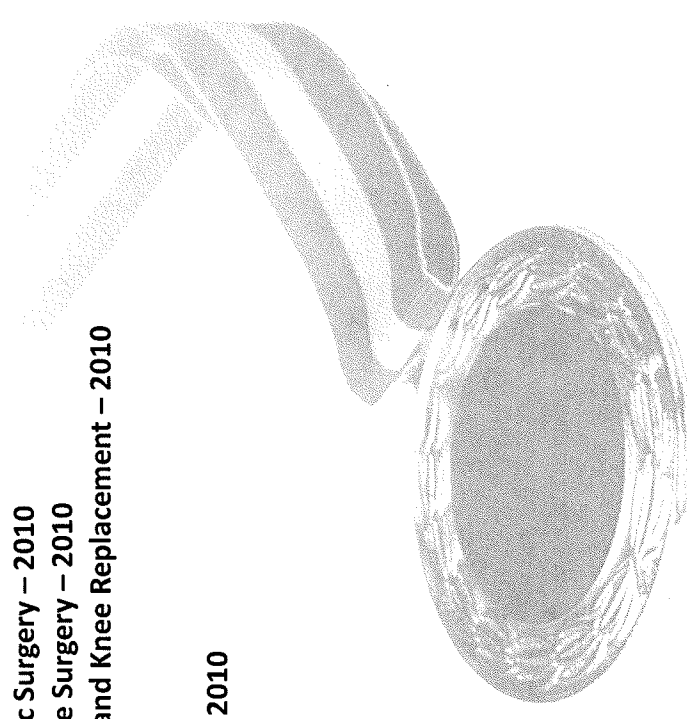
Spirit of North Carolina Campaigning for Excellence - 2010
United Way of North Carolina



Stroke Gold Plus Award - 2010
American Heart Association

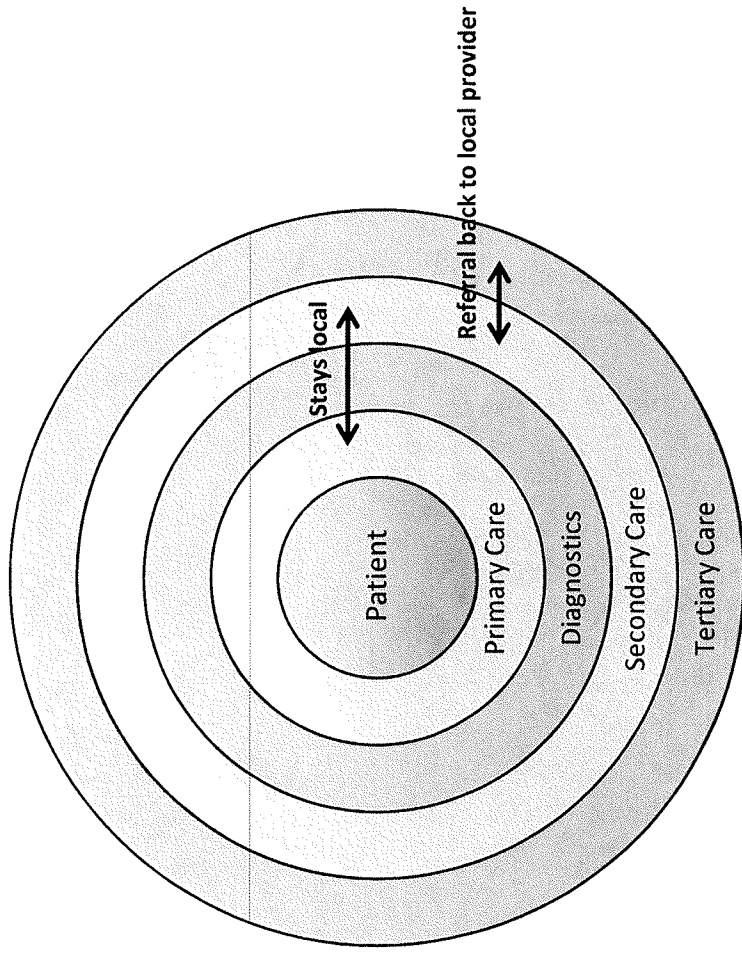


Baby Friendly Hospital - 2010
Baby Friendly USA



Mission's Philosophy of Care

Providing Patient-Centered Care Where and When it is Needed



Quality is providing superb integrated care across the region

Mission: Innovation

- Outpatient – Coordinated continuum of patient-centered care
 - The Mission Pardee Health Campus an innovative solution to a community's need
- Inpatient – Our “Big Aim”
 - Eliminate preventable patient harm while lowering costs
- Make Western NC a center of innovation
 - Generate and test new ideas
 - Improve access to care (inpatient and outpatient)
 - Become the national leader in patient safety and quality

Working Together ...

To Improve the Health of Henderson and Buncombe Counties

- Goal of the Mission Pardee Health Campus project:
 - Increase primary care access, health and wellness services in N. Henderson and S. Buncombe Counties
- Rationale:
 - Population growth and healthcare reform will demand it
 - Pardee partnership brings together two high quality, low cost organizations to enhance quality and access



Why Pardee and Mission?

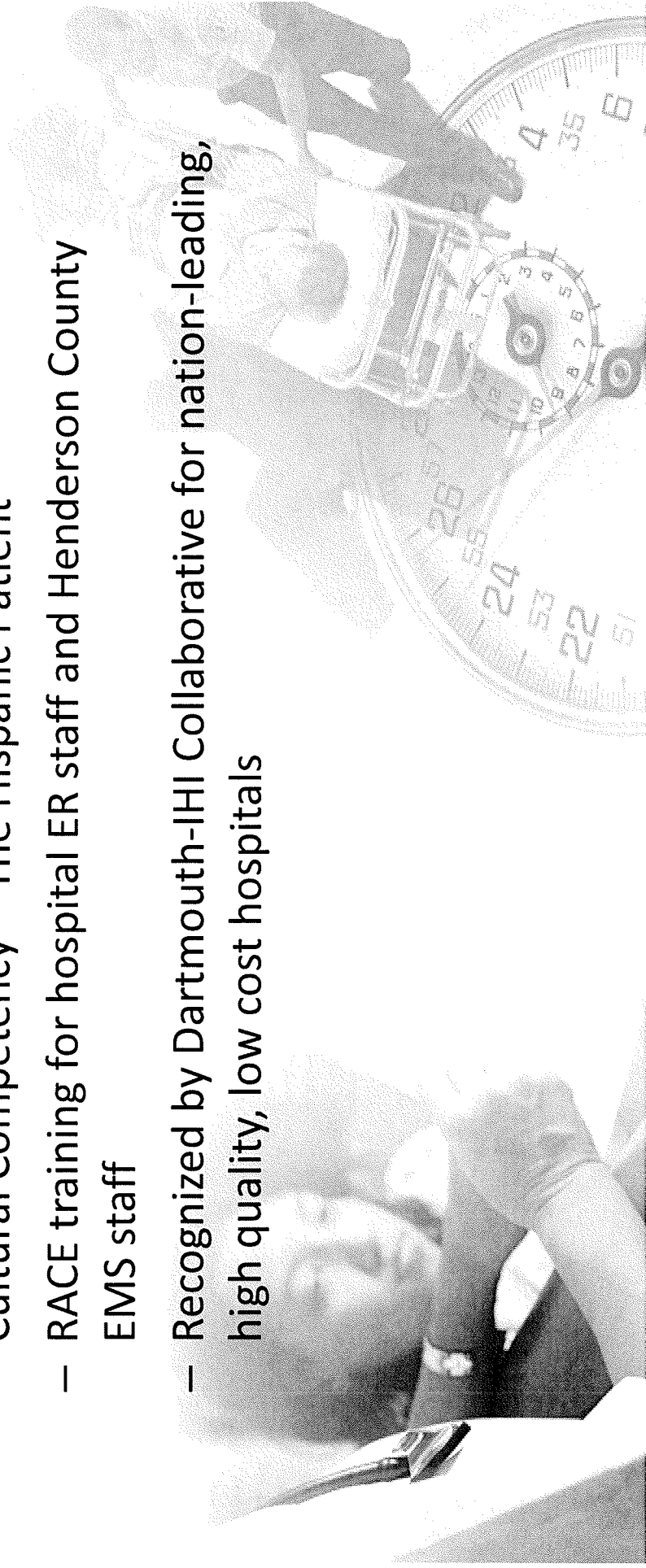
- Both are leaders in innovative community-based wellness and prevention programs:
 - Lighten Up 4 Life (community weight-loss wellness initiative)
 - Minutes Matter at the Apple Festival and Mountain State Fair with 1,600+ people trained:
 - 911 activation
 - Signs and symptoms of stroke
 - Compression CPR

Lighten Up **4** Life



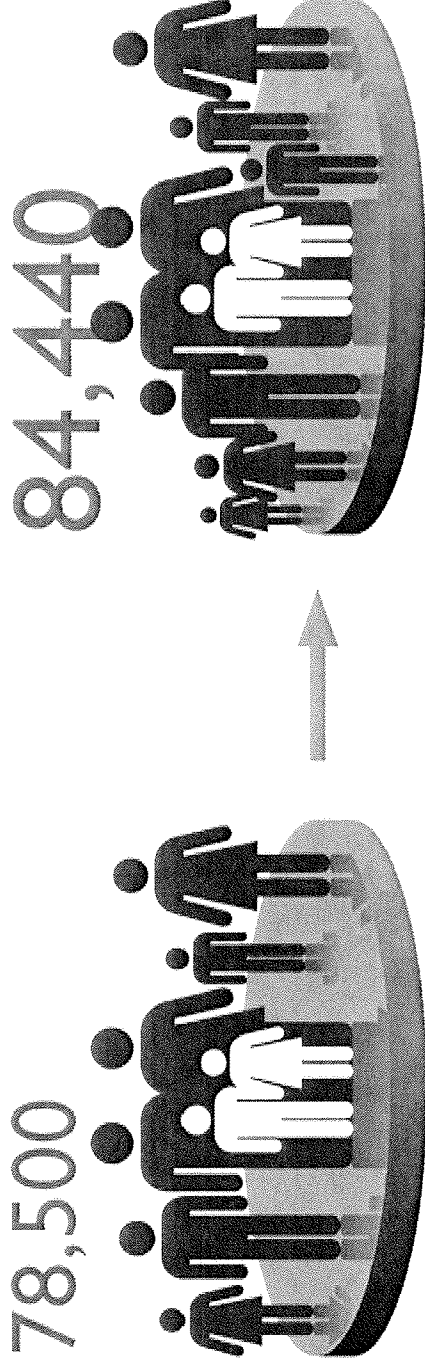
Why Pardee and Mission? (continued)

- Both share a commitment to clinical quality through collaborative training in Henderson County:
 - Acute Coronary Syndrome classes
 - Cultural Competency – The Hispanic Patient
 - RACE training for hospital ER staff and Henderson County EMS staff
 - Recognized by Dartmouth-IHI Collaborative for nation-leading, high quality, low cost hospitals



Projected Growth in Greater Fletcher Area

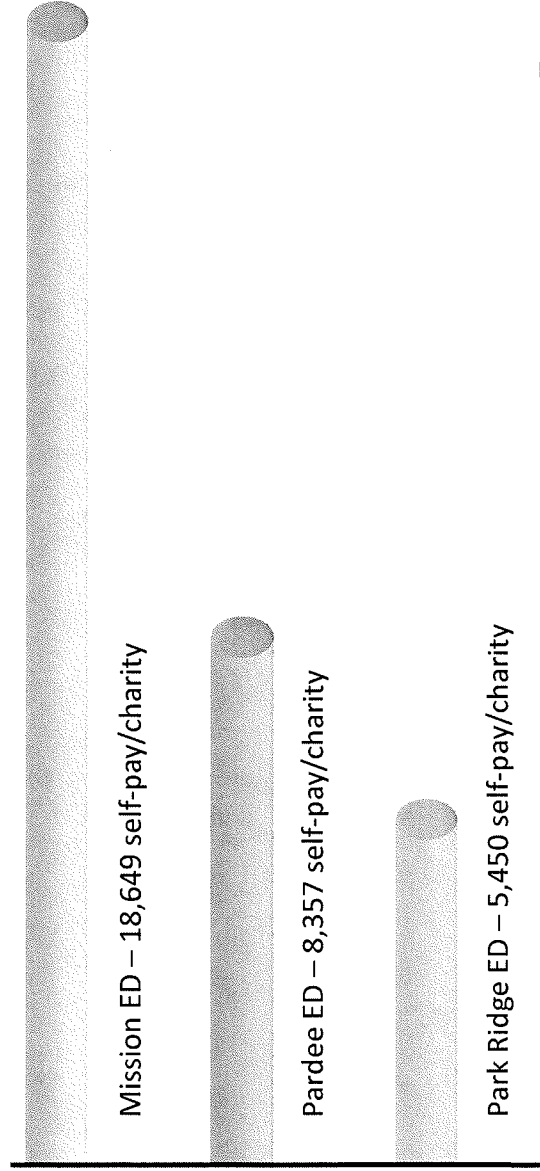
Population Growth from 2008 to 2013 (based on Claritas data)



A 15% increase in adults 65+ (higher utilization of inpatient and outpatient care) is also projected for this same time period

Our Commitment To Our Local Community

Caring for the uninsured

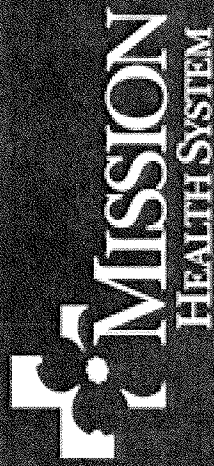


2009 Emergency Department Volumes for Uninsured

What Henderson County Residents Want*

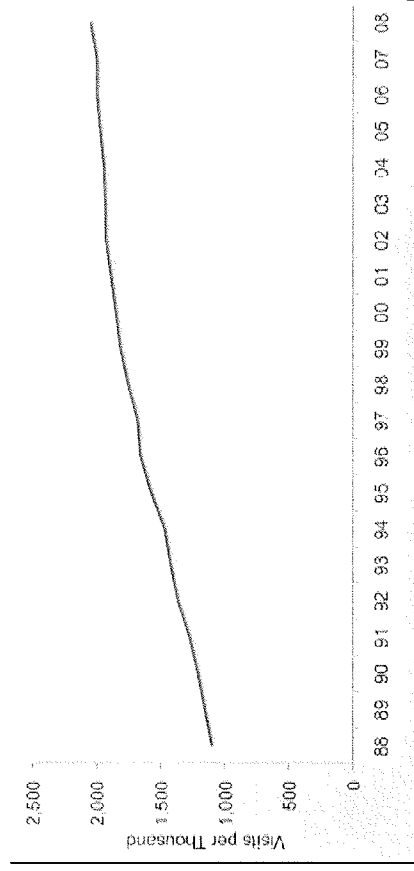
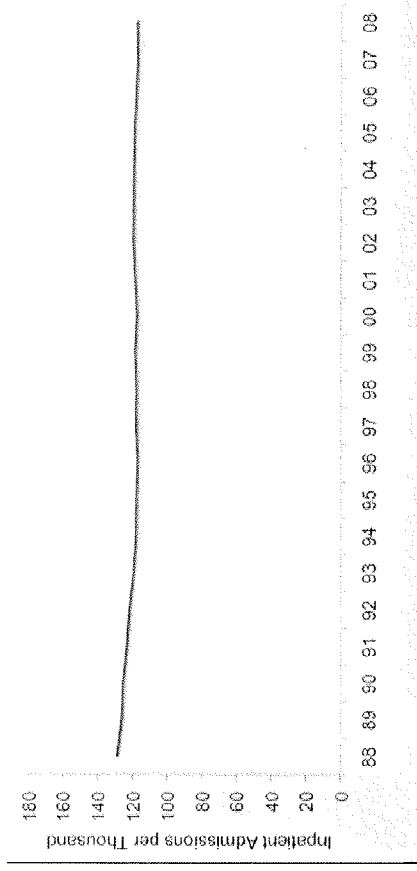
- Convenient hours, 8:00 a.m. until 10:00 p.m.
 - Important to working families and adult children caring for elderly parents
- Care near where they live, work and shop
 - Concept of “one-stop shopping”
- Comprehensive services
 - Primary and specialty care
- Continuity of care
 - A consistent provider who knows their medical history

*Based on Henderson County Focus Group Findings (August, 2010)



National Inpatient and Outpatient Trends

Inpatient vs. Outpatient Visits



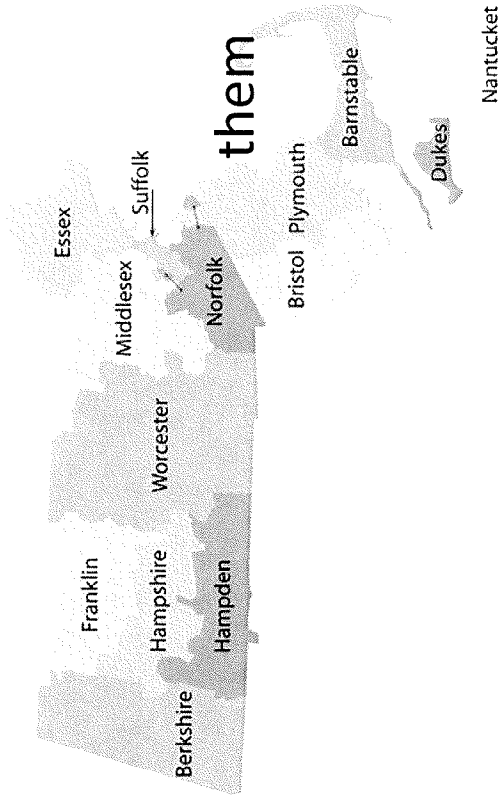
Source: Avalere Health analysis of American Hospital Association Annual Survey data, 2008, for community hospitals. U.S. Census Bureau: National and State Population Estimates, July 1, 2008.
Link: <http://www.census.gov/popest/states/tables/NST-EST2008-01.xls>.

Massachusetts' Experience

- Massachusetts was the first state to mandate universal health insurance
 - Passed healthcare reform in 2006 that requires nearly every resident to obtain a minimum level of health insurance
 - The state offers subsidized and free coverage for people below designated income levels
- The effects of this reform on healthcare delivery have been:
 - **A greater demand for healthcare services**
When everyone is insured, more people seek healthcare
 - **An initial and significant increase in ED admissions**
Because of the nationwide shortage of primary care physicians, more people are going to hospital emergency departments for care
 - **A substantial increase in need for primary care**

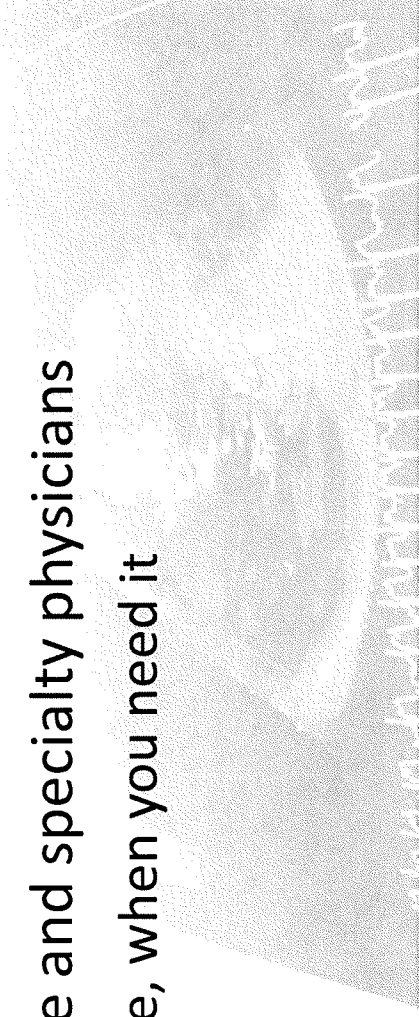
What We Can Learn from Massachusetts

- The best strategy is to be proactive not reactive
 - We must anticipate the inevitable increase in healthcare demand in our region and build additional capacity -- convenient, patient-centered and lower cost -- into our health delivery system
 - We need to take these steps *before* the needs exceed our collective ability to meet them



What Does This Mean for Henderson County?

- New Jobs
 - Construction (150-200), clinical, administrative
- Existing Jobs
 - Successful relocation of Alliance Trucking within Henderson County
- Access to more outpatient facilities providing:
 - Wellness and prevention programs/keeping people well
 - Diagnostic capabilities/early detection of health problems
- Access to more primary care and specialty physicians
 - Medical care close to home, when you need it



Profiling Mission Health System and Adventist Health System

	Mission	Adventist/Park Ridge
Corporate Office	Western NC	Florida
# of Employees	7,000	55,000/1,100
Denomination	Not denominationally controlled	Seventh Day Adventist <i>"Largest not-for-profit Protestant healthcare provider in the nation"</i>
Revenues	\$961 million	\$6.1 billion
# of Hospitals	3	43 (1 in North Carolina)
Areas of Operation	W. North Carolina	10 states

Adventist Health System Opposition to Mission

PROJECT	DATE	RESULT
Cost Overrun CON ("J" Building construction)	Filed 2008 Resolved 2009	NC Office of Administrative Hearings ruled in favor of Mission and found no merit in the complaint. Cost to Mission - \$4.5 million
Objection to COPA and Mission-Pardee Health Campus	July 15, 2010	NC Attorney General and Department of Health Services Regulation issued findings denying Park Ridge's [Adventist Health System's] allegations.

What the State Says About the Health Campus

The excerpts that follow are from the September 15, 2010, report: **“Decision of the Department of Health and Human Services [DHHS] Regarding Its Review of the Biennial COPA [Certificate of Public Advantage] Report of Mission Health System, Inc.”**



Drexdal Pratt
Director, Division of Health
Service Regulation



Regarding the Period of Public Comment

- “DHHS and the Department of Justice (DOJ) met at length with one commenter...Park Ridge Health [Adventist Health System], and received several rounds of documentary material.”
- Upon review of the documents, DHHS concluded that **“the rationale for many of Park Ridge’s [Adventist Health System’s] proposals is weak or lacking.”**

Regarding Mission's Collaboration with Pardee

- “...an increase in Mission’s ability to provide medical services in the vicinity of Park Ridge [Adventist Health System] is not in itself anti-competitive. In fact it would appear to be pro-competitive by increasing competition.”

Regarding Adventist Health System's Accusation of "Predation"

"Park Ridge [Adventist Health System] has not shown that Mission's affiliation with other hospitals is predatory, otherwise anti-competitive, or harmful to the public interest."

Take-away Messages

- We are a local neighbor with a 125 year history of caring for families in Western NC
- ALL of our employees live and work in Western NC
- Our focus is on providing the highest quality care, as close to home as possible
- We want to partner with Pardee – another high quality, low cost, local care provider -- to be proactive, and get ahead of the need for additional, convenient, patient-centered ambulatory care in N. Henderson/S. Buncombe County
- **Bottom line: Additional services, more local jobs, enhanced convenience, highest quality care**

Pardee and Mission

Working Together to Improve the Health of Our Region

