

# REQUEST FOR BOARD ACTION

## HENDERSON COUNTY BOARD OF COMMISSIONERS

**MEETING DATE:** September 22, 2010

**SUBJECT:** Set Public Hearing - Zoning Map Amendments for the Etowah-Horse Shoe Communities

**ATTACHMENTS:** (1) Map – Existing Zoning  
(2) Map – Proposed Zoning

### SUMMARY OF REQUEST:

The Board of Commissioners, by resolution, took action on the Etowah-Horse Shoe (EHS) Communities Plan on September 16, 2009. The Board of Commissioners directed various staff and boards to begin implementation of the plan with some modifications from the original draft. The Planning Board began its discussion and review of the Plan in January of 2010. On August 18<sup>th</sup>, staff gave a preview the proposed zoning map amendments to the Board. The Board will need to hold a public hearing prior to taking action on the proposed zoning map amendments.

### BOARD ACTION REQUESTED:

Staff requests that the Board set a public hearing for its November 1<sup>st</sup> meeting or call a special called meeting. Staff has provided the following dates and locations for a special called meeting if the Board so chooses.

<u>Date</u>	<u>Location</u>
Tuesday, October 26, 2010	King Street Meeting Room
Thursday, October 28, 2010	King Street Meeting Room
Thursday, November 4, 2010	BOC Meeting Room, Historic Courthouse
Tuesday, November 9, 2010	BOC Meeting Room, Historic Courthouse

If the Board decides not to take action on the night of the public hearing it can continue its discussion at the next regularly scheduled Board meeting on November 17<sup>th</sup>.

### Suggested Motion:

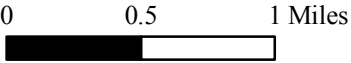
I move that the Board set a public hearing on the proposed map amendments for the Etowah and Horse Shoe communities for (Date) at (Time) in the (location).

**Etowah Horse Shoe Community**

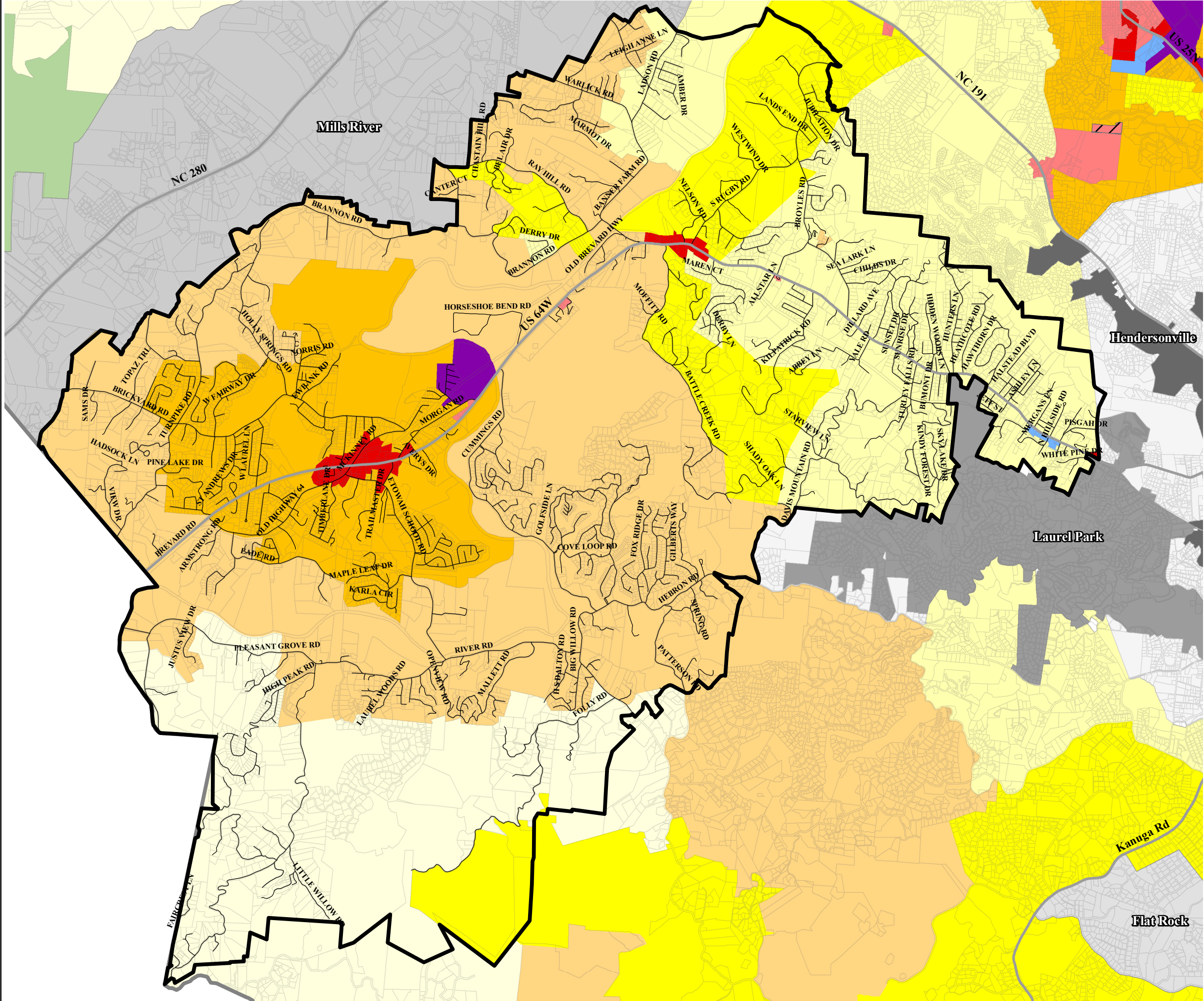
**Official Zoning**

- Major Roads
- Streets
- Community Boundary
- Zoning Districts
  - Residential 4
  - Residential 3
  - Residential 2 - Rural
  - Residential 2
  - Residential 1
  - R-40
  - WR
  - SW
  - O&I
  - Local Commercial
  - Local Commercial - CD
  - Community Commercial
  - Regional Commercial
  - Industrial
- City of Hendersonville
- Town of Laurel Park
- Town of Mills River
- Village of Flat Rock
- Municipal ETJ
- Parcels

1 inch = 0.72 miles



This map is prepared from the inventory of real property found within this jurisdiction, and is compiled from recorded deeds, plats, and other public records and data. Users of this map, are hereby notified that the aforementioned public primary information sources should be consulted for verification of the information contained on this map. The County and mapping company assume no legal responsibility for the information contained on this map.



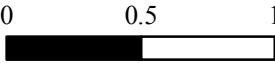


**Etowah Horse Shoe Community**

**Proposed Zoning**

- Major Roads
- Streets
- Community Boundary
- Zoning Districts
  - Residential 4
  - Residential 3
  - Residential 2 - Rural
  - Residential 2
  - Residential 1
  - R-40
  - WR
  - SW
  - O&I
  - Local Commercial
  - Local Commercial - CD
  - Community Commercial
  - Regional Commercial
  - Industrial
  - City of Hendersonville
  - Town of Laurel Park
  - Town of Mills River
  - Village of Flat Rock
  - Municipal ETJ
  - Parcels

1 inch = 0.72 miles



This map is prepared from the inventory of real property found within this jurisdiction, and is compiled from recorded deeds, plats, and other public records and data. Users of this map, are hereby notified that the aforementioned public primary information sources should be consulted for verification of the information contained on this map. The County and mapping company assume no legal responsibility for the information contained on this map.

