

**REQUEST FOR BOARD ACTION**

**HENDERSON COUNTY  
BOARD OF COMMISSIONERS**

**MEETING DATE:** November 19, 2008

**SUBJECT:** Well Issues in Henderson County

**ATTACHMENTS:** Yes

**SUMMARY OF REQUEST:**

Seth Swift, Environmental Health Supervisor, will provide the Board with an update on the status of well issues in Henderson County related to the persistent drought.

**BOARD ACTION REQUESTED:**

No Board action is requested. The update is for informational purposes only.

**Suggested Motion:**

*No motion suggested.*

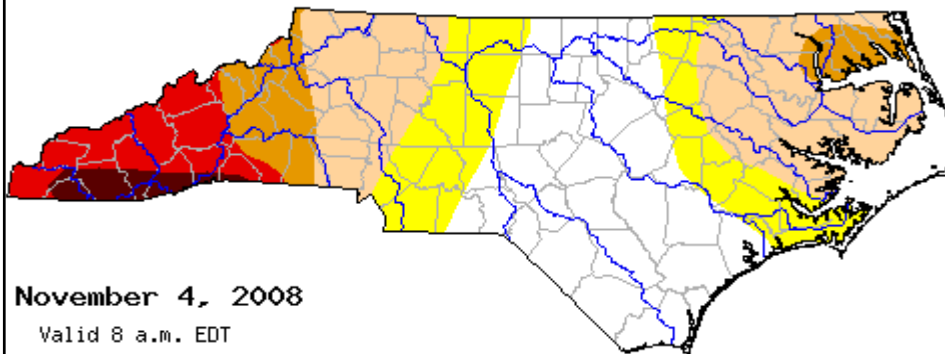


## Drinking Water Well Update

November 19, 2008

## Drought In Henderson County

- Henderson County has Suffered Severe, Extreme or Exceptional Drought Conditions Since May 29, 2007



## What Effect Has The Drought Had on Henderson County?

- In January 2008, Mr. Wyatt directed me to send him weekly information on depths and water flow rates on new wells.
- During this time frame no unusual or unexpected results have been detected.

## Citizens Without Water

- There have been 8 reports since Jan 1, 2008 of wells or springs going dry or drying up.
  - 5 have been springs which have gone dry
  - 3 have been wells that are dry or were “drying up”

## Effects of Prolonged Drought

- On August 5, 2008 the city of Hendersonville issued mandatory water restrictions.
- Several businesses applied for well permits in order to stay open
- On September 17, 2008 the city of Hendersonville rescinded the restrictions.

## Effect of Water Restrictions

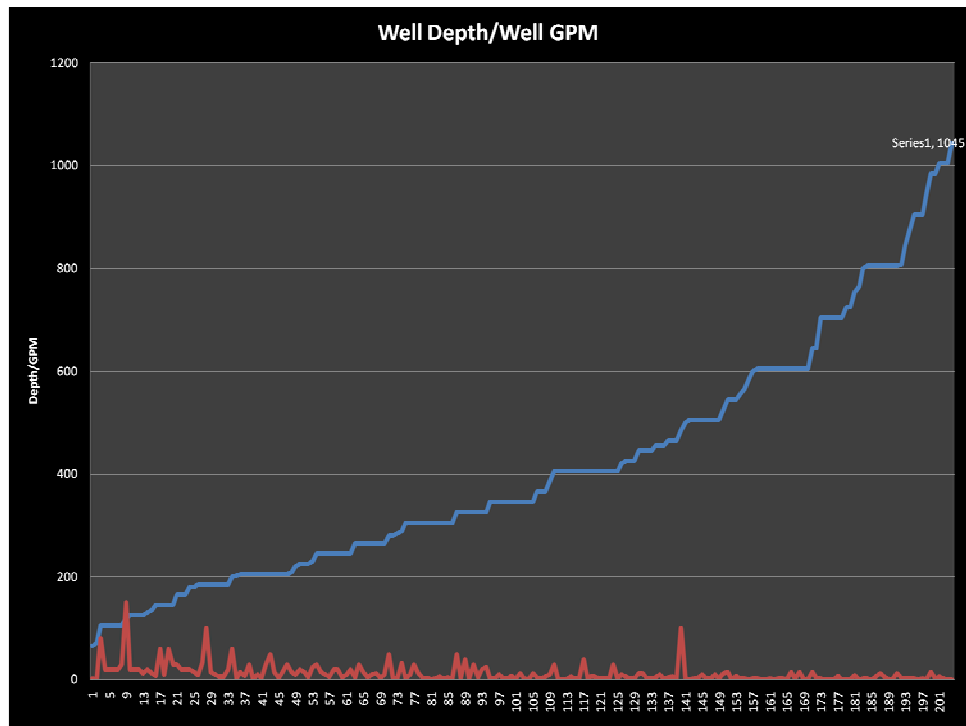
- Interest in drilling wells in area that are served by city water increased.
- Business affected by the restrictions applied for well permits
  - 2 carwash operations have drilled wells
  - 6 wells were permitted in areas served by city water.

## Number of Wells Drilled in Henderson County

	2007	2008
Total # Wells	397	282
July	41	34
August	41	33
September	34	23
October	28	21

## Basic information about Henderson County Wells for 2008

- Average depth of wells reported is 406'
  - Deepest is 1045'
  - Shallowest is 65'
- Average Gallon Per Minute Rate is 12
  - 4 Wells had no water
  - The highest GPM was 150



Questions?