

REQUEST FOR BOARD ACTION

HENDERSON COUNTY BOARD OF COMMISSIONERS

MEETING DATE: September 19, 2007

SUBJECT: Consideration of the Etowah-Horse Shoe Communities Planning Boundary

ATTACHMENTS: 1. Revised Draft Map of the Etowah and Horse Shoe Communities Boundary

SUMMARY OF REQUEST:

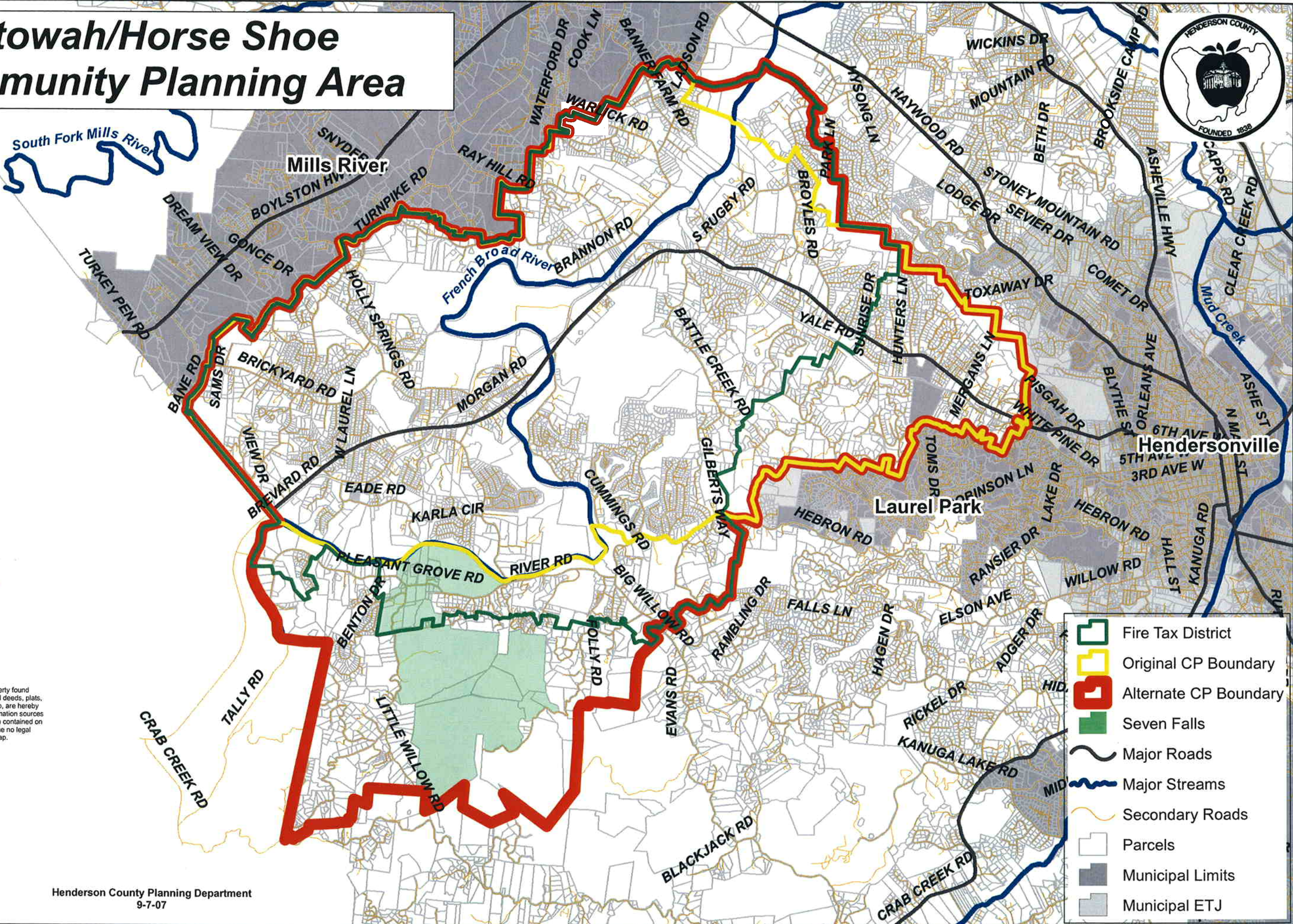
On September 4, 2007, the Board of Commissioners directed staff to study the draft Etowah and Horse Shoe Communities Boundary Map. The Board recommended that staff include all land within the Etowah-Horse Shoe fire tax district and property within the Seven Falls subdivision. Staff has created a new map which reflects these changes and added properties that may be included in the communities planning process (see attachment 1).

BOARD ACTION REQUESTED:

Planning Staff requests the Board of Commissioners review the changes and direct staff on how to proceed with the attached draft map.

Suggested Motion: I move that the Board direct staff to create a final Etowah and Horse Shoe Communities boundary map incorporating any changes that may have arisen during this Board meeting.

Etowah/Horse Shoe Community Planning Area

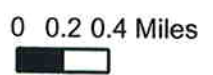


DRAFT

This map is prepared from the inventory of real property found within this jurisdiction, and is compiled from recorded deeds, plats, and other public records and data. Users of this map, are hereby notified that the aforementioned public primary information sources should be consulted for verification of the information contained on this map. The County and mapping company assume no legal responsibility for the information contained on this map.



1 inch equals 0.84 miles



Henderson County Planning Department
9-7-07

- Fire Tax District
- Original CP Boundary
- Alternate CP Boundary
- Seven Falls
- Major Roads
- Major Streams
- Secondary Roads
- Parcels
- Municipal Limits
- Municipal ETJ